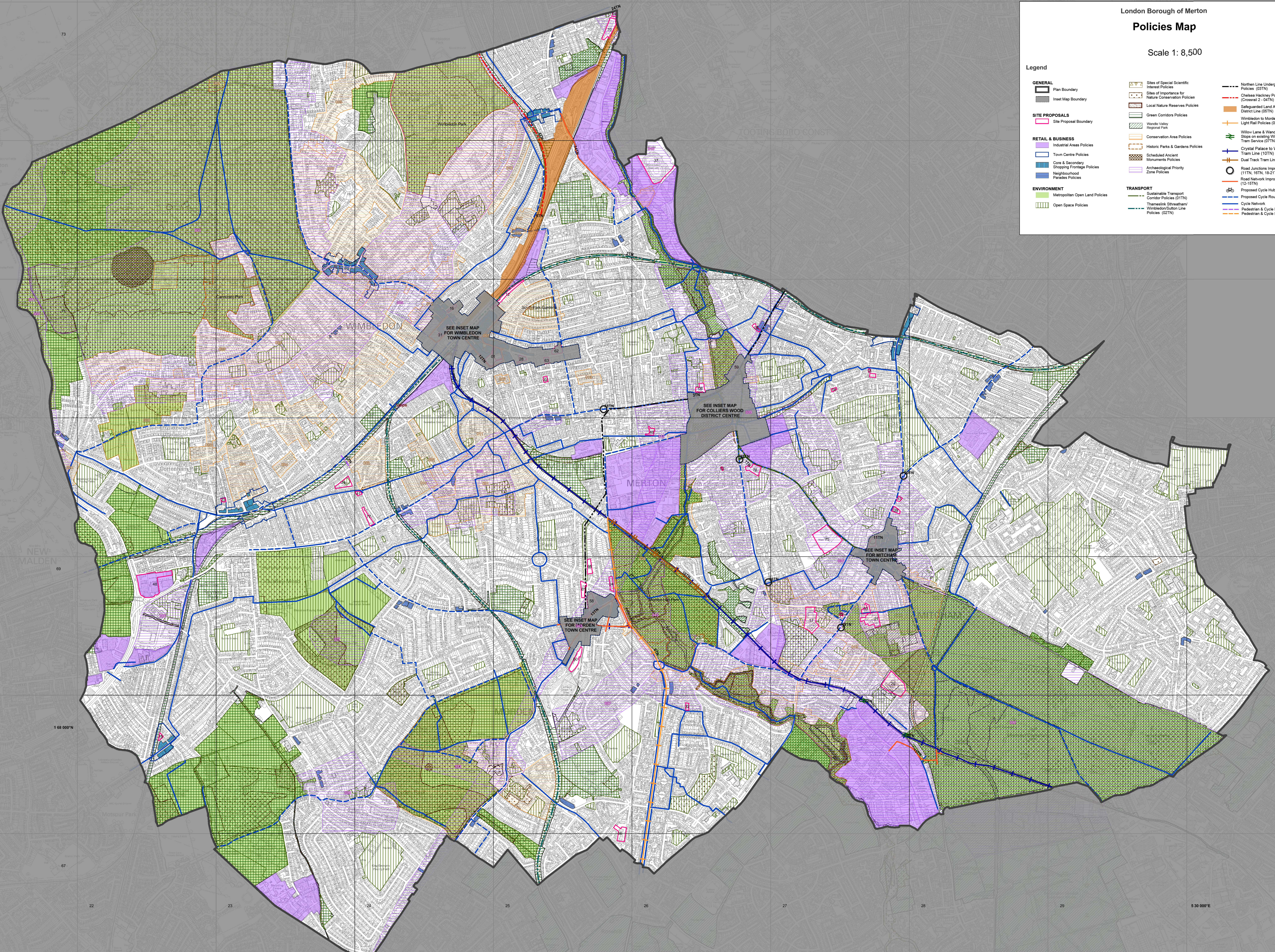


# Policies Map

Scale 1: 8,500

## Legend

<b>GENERAL</b>	Plan Boundary	Inset Map Boundary	Sites of Special Scientific Interest Policies	Sites of Importance for Nature Conservation Policies	Local Nature Reserves Policies	Green Corridors Policies	Wandle Valley Regional Park	Conservation Area Policies	Historic Parks & Gardens Policies	Scheduled Ancient Monuments Policies	Archaeological Priority Zone Policies	Northern Line Underground Policies (03TN)	Chelsea Heathway Policies Line (Crossrail 2 - 04TN)	Safeguarded Land Adjoining District Line (06TN)	Wimbledon to Morden/Cuton Light Rail Policies (06TN)	Willow Lane & Wandie Way Tram Stops on existing Wimbledon Tram Service (07TN)	Crystal Palace to Wimbledon Tram Line (10TN)	Dual Track Tram Line (25TN)	Road Junctions Improvements (11TN, 16TN, 18-21TN)	Road Network Improvements (12-15TN)	Proposed Cycle Hubs	Proposed Cycle Route (22TN)	Cycle Network	Pedestrian & Cycle Route (23TN)	Pedestrian & Cycle Bridge (24TN)
<b>SITE PROPOSALS</b>	Site Proposal Boundary																								
<b>RETAIL &amp; BUSINESS</b>	Industrial Areas Policies	Town Centre Policies	Core & Secondary Shopping Frontage Policies	Neighbourhood Parades Policies																					
<b>ENVIRONMENT</b>	Metropolitan Open Land Policies	Open Space Policies																							
<b>TRANSPORT</b>	Sustainable Transport Corridor Policies (01TN)	Thameslink, Slougham/Wimbledon/Cuton Line Policies (02TN)																							



This map is based on Ordnance Survey material with the permission of Ordnance Survey on behalf of HMSO. Unauthorised reproduction infringes Crown Copyright and may lead to prosecution or Civil proceedings. London Borough of Merton 100019259. 2013.