

Controlled Parking Zone (CPZ) Proposed Zone VQ Camp Road Area

ISSUE DATE : 24 NOVEMBER 2016

All Day Controls (8.30am - 6.30pm) - This will provide maximum protection to the residents by removing short and long-term parking. It will, however, be less flexible for residents and their visitors who will need to obtain a visitor's permit from the resident they are visiting in order to park in the permit holder bays. There will be a number of shared use bays and pay and display bays which can be utilised by visitors.

Part Time Controls (10am - 4pm) - These operating times offer less restrictions on residents and their visitors than 'all day' controls. It is still effective in preventing long-term parkers. However, it may encourage other short term parking outside the restricted time by non-residents such as shoppers and those who may also work their way around the 6 hours by moving their vehicles and then returning to park for the rest of the day. Residents returning from work later in the afternoon may find less available parking in their street.

3 hour controls (2.30 - 5.30pm) (This option has been suggested by the Residents Association) - These operating times offer fewer restrictions for residents and their visitors than the "all day" controls. It is still effective in preventing long term commuters and other long stay parking. However, it may encourage short-term parking outside the operating times by non-residents or businesses. Motorists unable to park in nearby roads with controls may also take advantage of the available parking outside the controlled times. This would also mean motorist can park in this area until lunch time and move their vehicle to The Causeway for the rest of the day.

The standard annual parking permit charges apply regardless of the hours the zone operates.

The days of operation of the proposed zone will remain Monday to Friday as previously consulted upon and supported by consultees.

LET US KNOW YOUR VIEWS

The decision on whether or not to proceed with the next step, which would involve a statutory consultation on the proposals, will be subject to the responses received during this consultation. We would ask that you submit your questionnaire online using this link www.merton.gov.uk/cpzvq. The online system has been created to keep costs down and allow the Council to process your views more efficiently. Please let us have any comments or suggestions you may have by **16 December 2016** and it is one

vote per household or business.

We regret that due to the number of responses received during an informal consultation, it will not be possible to individually reply to each respondent. We welcome your comments on this proposal, which will be noted and included within the proposed measures where appropriate. It should be noted that subject to the responses received, a recommendation may be made to only include those roads where there is a majority in support of the proposals.

WHAT HAPPENS NEXT

The results of the consultation along with Officers' recommendations will be presented in a report to the Cabinet Member for Environment Regeneration and Housing. Once a decision is made you will be informed accordingly.

You can visit our website using the following link www.merton.gov.uk/cpzvq. You may also view the plans in Merton Link at Merton Civic Centre, Morden during our working hours, Monday to Friday between 9am and 5pm. Plans will also be available at Wimbledon Library.

For more information, please see the Frequently Asked Questions (FAQ's) at www.merton.gov.uk/cpzvq.

VILLAGE WARD COUNCILLORS

Cllr Hamish Badenoch
Tel - 020 8545 3396
Email: hamish.badenoch@merton.gov.uk

Cllr John Bowcott
Tel - 020 8946 1011
Email: John.bowcott@merton.gov.uk

Cllr Najeeb Latif
Tel - 020 8545 3396
Email: najeeb.latif@merton.gov.uk

Cllr Martin Whelton
Cabinet Member for Environment, Regeneration and Housing.
Tel: 020 8545 3425
Email: martin.whelton@merton.gov.uk

Dear Resident / Business

Following the receipt of a petition from some of the local residents and consultations carried out by the Ward Councillors, during June 2016 the Council carried out a statutory consultation on a CPZ for the Quadrant area and Westside Common.

The purpose of this leaflet is to further seek your views on proposals to introduce a CPZ in the Quadrant area and Westside Common as shown on the enclosed plans. This informal consultation is in response to representations received during the recent statutory consultation on proposals to introduce a CPZ in this area operating Monday to Friday between 8.30am and 6.30pm. We received representation from the Residents Association and some residents requesting the hours of operation to be changed from 8.30am - 6.30pm to 2.30 - 5.30pm with days of operation remaining as Monday - Friday.

This has necessitated the need to clarify majority support for the hours of operation. It would therefore be appreciated if you could choose your preferred hours by responding via www.merton.gov.uk/cpzvq. Please let us have your view by 16 December 2016. **It is only one vote per household or business.**

In the event that the majority response is supportive of Mon-Fri, between 8.30am and 6.30pm, the Council would be able to implement the CPZ as soon as the Cabinet Member's approval is obtained. However, if there is a change, a further statutory consultation would be necessary. In the event that there is a change in hours of operation, a statutory consultation will not take place until March 2017 at the earliest and implementation would be subject to the outcome of the consultation and Cabinet Member approval.

The following is for information only.

The statutory consultation for The Causeway was completed in July 2016. The report detailing the outcome of consultation will be reported to the Cabinet Member shortly. It will be Officers recommendation that The Causeway is implemented with the days of operation Monday - Friday and hours of operation between 8.30am and 6.30pm. The outcome of this CPZ

consultation will have no bearing on the implementation of the proposed parking measures along The Causeway, although the scheme maybe implemented in February 2017.

All road space in a CPZ is managed by the introduction of parking controls. Parking is only permitted where safety, access and sight lines are not compromised. It is, therefore, normal practice to introduce double yellow lines at key locations such as at junctions, bends, turning heads and at specific locations along lengths of roads where parking would impede the passing of vehicles. It is also necessary to provide yellow lines (effective during the CPZ hours of operation or "At Any time") where the kerb is lowered, i.e. at crossovers for driveways. **Officers will recommend the implementation of the proposed double yellow lines whether the CPZ goes ahead or not. It is proposed to implement the double yellow lines when The Causeway works commerce.** This will ensure safety is maintained regardless of the proposed CPZ.

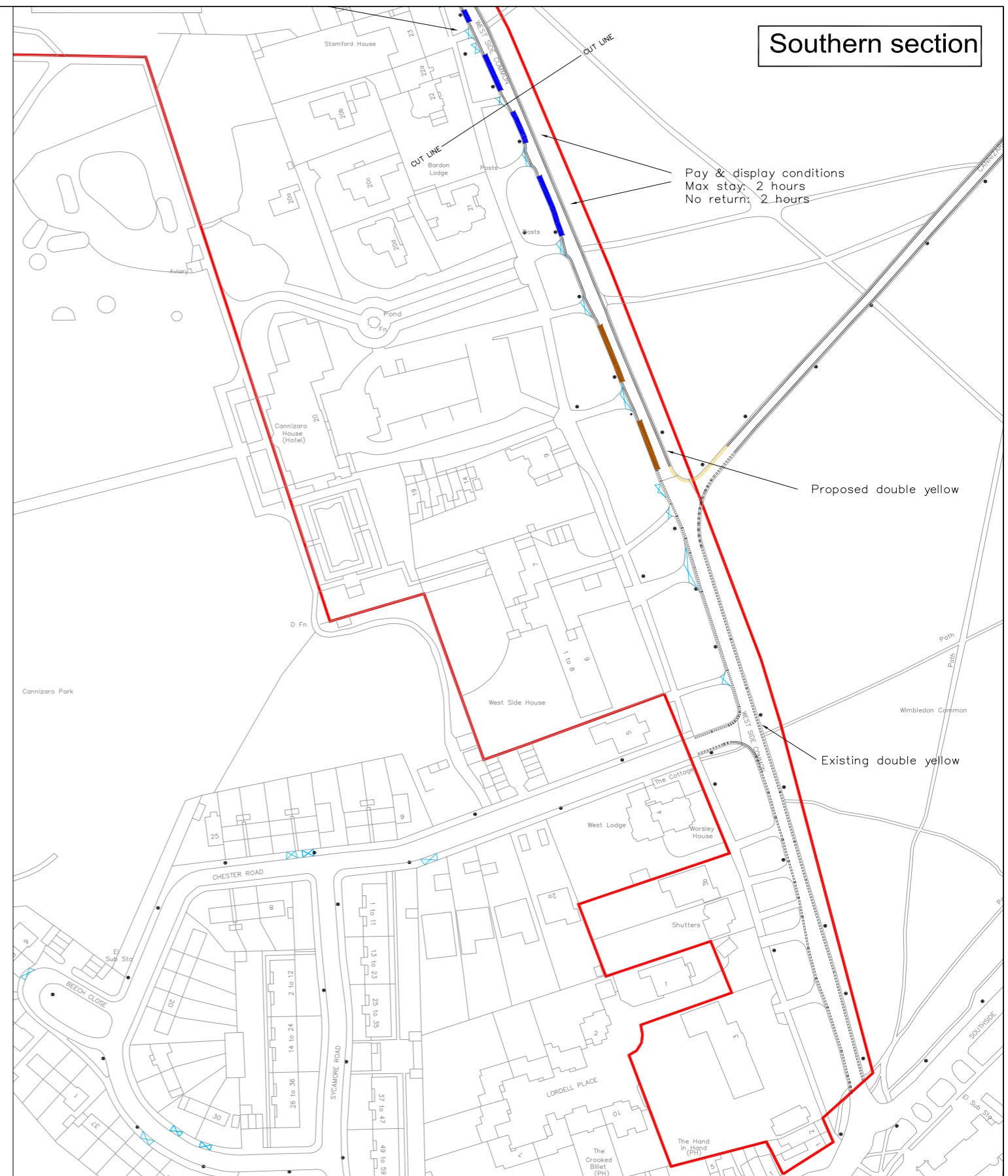
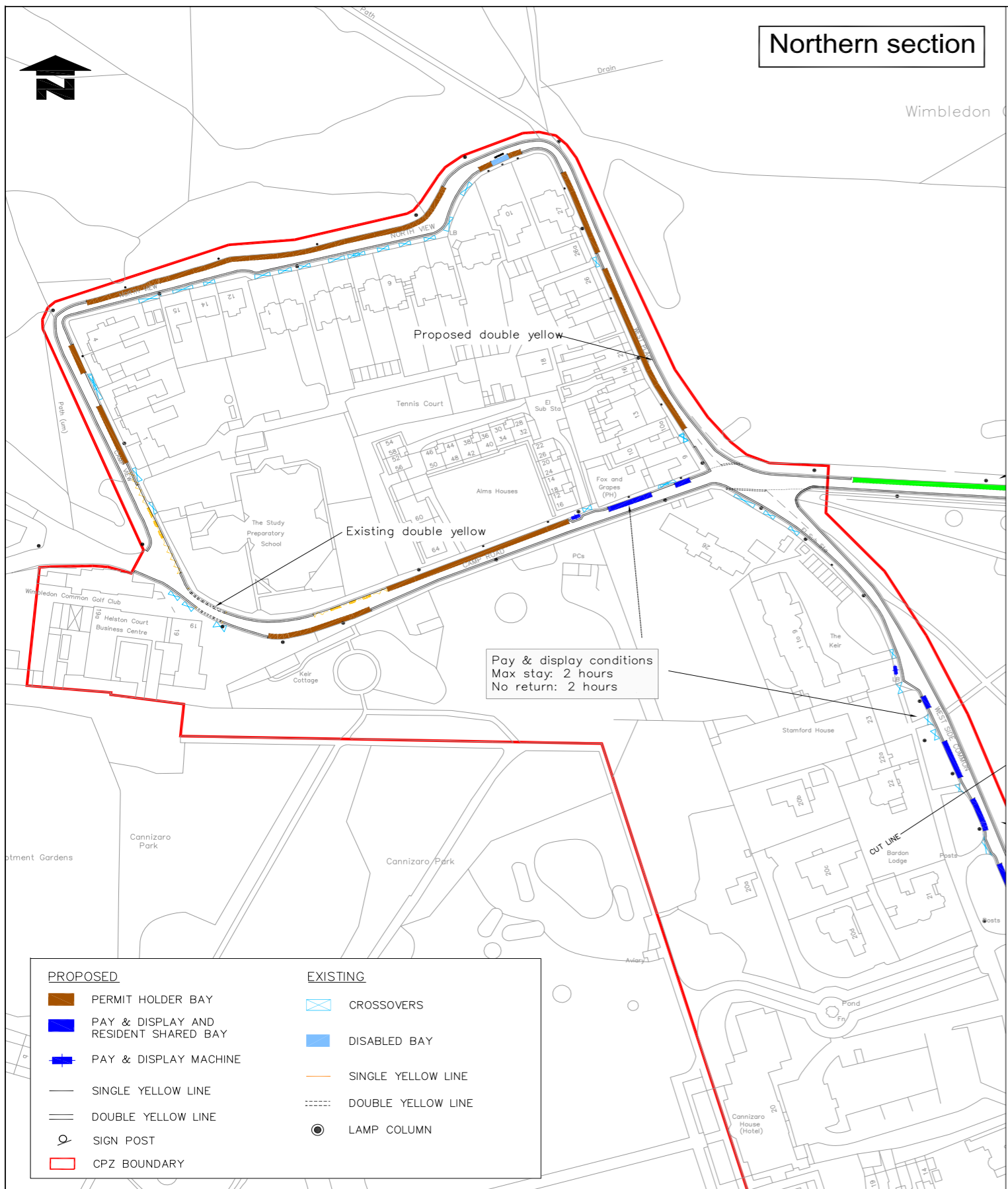
PROPOSAL

The proposals include a number of provisions which are detailed overleaf.

During the previous statutory consultation it was suggested that:

- Officers' proposed Permit holder bays should be changed to shared use bays. However, due to objections received and in line with Council's principles in accommodating resident's needs, the bays will be Permit holder bays only. It is considered that there will be sufficient shared use bays / P&D bays nearby.
- It was proposed for some parking bays to be introduced outside The Kier. However, due to objections received and in line with Council's principles in maintaining safety and access the parking bays will not be implemented at this location.

Operational Hours - The choice of operational hours are explained below:



Notes
Do not scale from this drawing

Rev.	Revisions	Drawn	Sig.	Date	Chkd.	Sig.	Date	App.	Sig.	Date
A	Minor amendments to northern section									

<p>Sustainable Communities environment & regeneration</p> <p>TRAFFIC & HIGHWAYS</p>										
--	--	--	--	--	--	--	--	--	--	--

Reproduced from/based upon the Ordnance Survey's 1:1250 maps with the permission of the Controller of H.M.S.O., Crown Copyright Reserved. Unauthorized reproduction infringes Crown copyright and may lead to prosecution or civil proceedings. London Borough of Merton 100019259

Drawn by	Sig.	Date
B.C.		Dec 2015
Checked by	Sig.	Date
Approved by	Sig.	Date

PROJECT
Controlled Parking Zones (CPZ's)

TITLE
Design Layout
VQ CPZ (Village Quadrant)

Merton Civic Centre
London Road
Morden, Surrey
SM4 5DX
www.merton.gov.uk

Drawing No.	Z78-232-01
Revision	A
Classification	CONSULTATION
Scale	NTS