


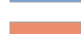

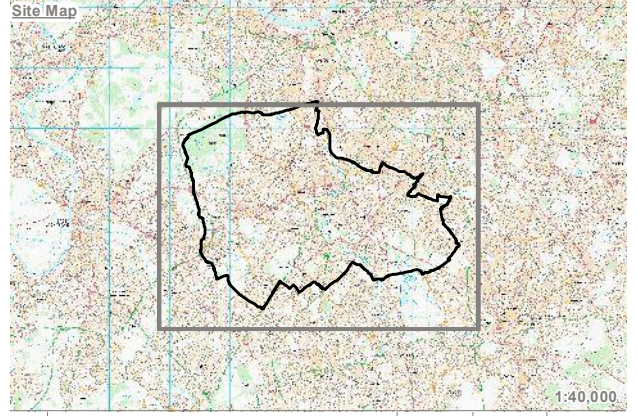


KEY

-  London Borough of Merton
-  Open Space Policy Designation
-  Open Space Only Within GiGL Dataset
-  Open Space Only Within Merton Dataset
-  Open Space Within Both Datasets

Reproduced by permission of Ordnance Survey on behalf of Her Majesty's Stationery Office.
 Contains OS data © Crown Copyright and database right 2017. All rights reserved.
 London Borough of Merton 100019259 2018.
 Contains Open Spaces Data From Greenspace Information for Greater London (GiGL) CIC 2018 www.gigl.org.uk



Rev	Description	Drawn	Approved	Date

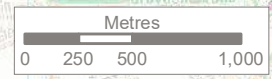
TEP | **THE ENVIRONMENT PARTNERSHIP**
 Genesis Centre, Birchwood Science Park, Warrington WA3 7BH
 Tel 01925 844004 e-mail tep@tep.uk.com www.tep.uk.com

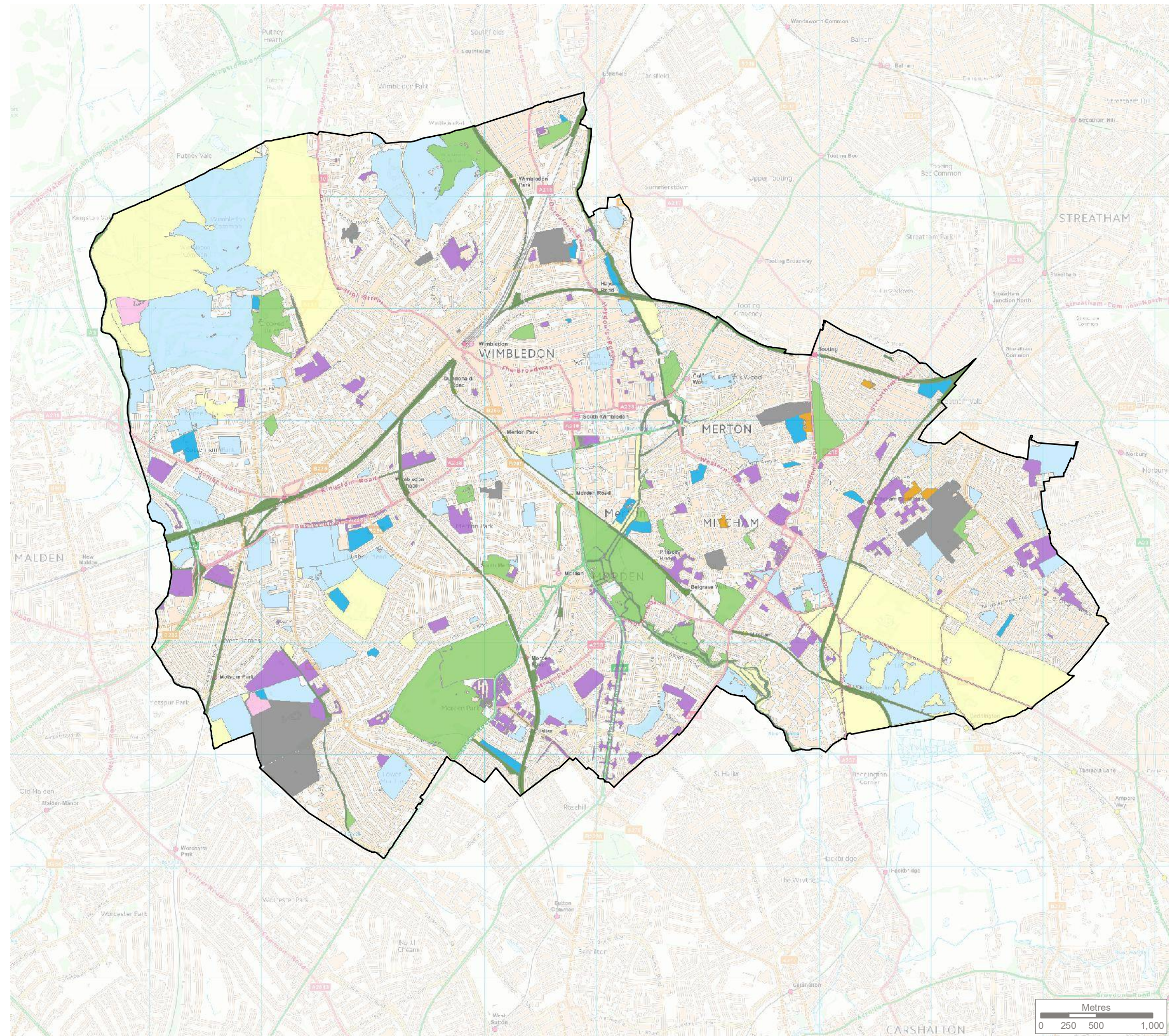
Project
Merton GI, Biodiversity and Open Space Strategy

Title
Open Space Designation Comparison

Drawing Number
G7118.008.1 Sheet 1 of 4

Drawn	Checked	Approved	Scale	Date
JO	AH	LS	1:35,000 @ A3	16/01/2019

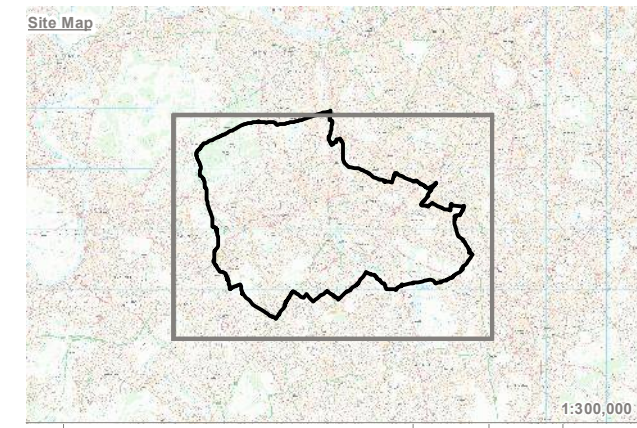




KEY

- London Borough of Merton
- Allotments, Community Gardens and City Farms
- Amenity Space
- Cemeteries and Churchyards
- Provision for Children and Teenagers
- Green Corridors
- Natural and Semi-Natural Urban Greenspace
- Outdoor Sports Facilities
- Parks and Gardens
- Other Urban Fringe
- Other Open Space

Reproduced by permission of Ordnance Survey on behalf of Her Majesty's Stationery Office.
 Contains OS data © Crown Copyright and database right 2017. All rights reserved.
 London Borough of Merton 100019259 2018.
 Contains Open Spaces Data From Greenspace Information for Greater London (GiGL) CIC, 2018. www.gigl.org.uk



Rev	Description	Drawn	Approved	Date

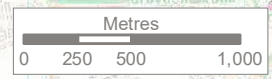
TEP | **THE ENVIRONMENT PARTNERSHIP**
 Genesis Centre, Birchwood Science Park, Warrington WA3 7BH
 Tel 01925 844004 e-mail tep@tep.uk.com www.tep.uk.com

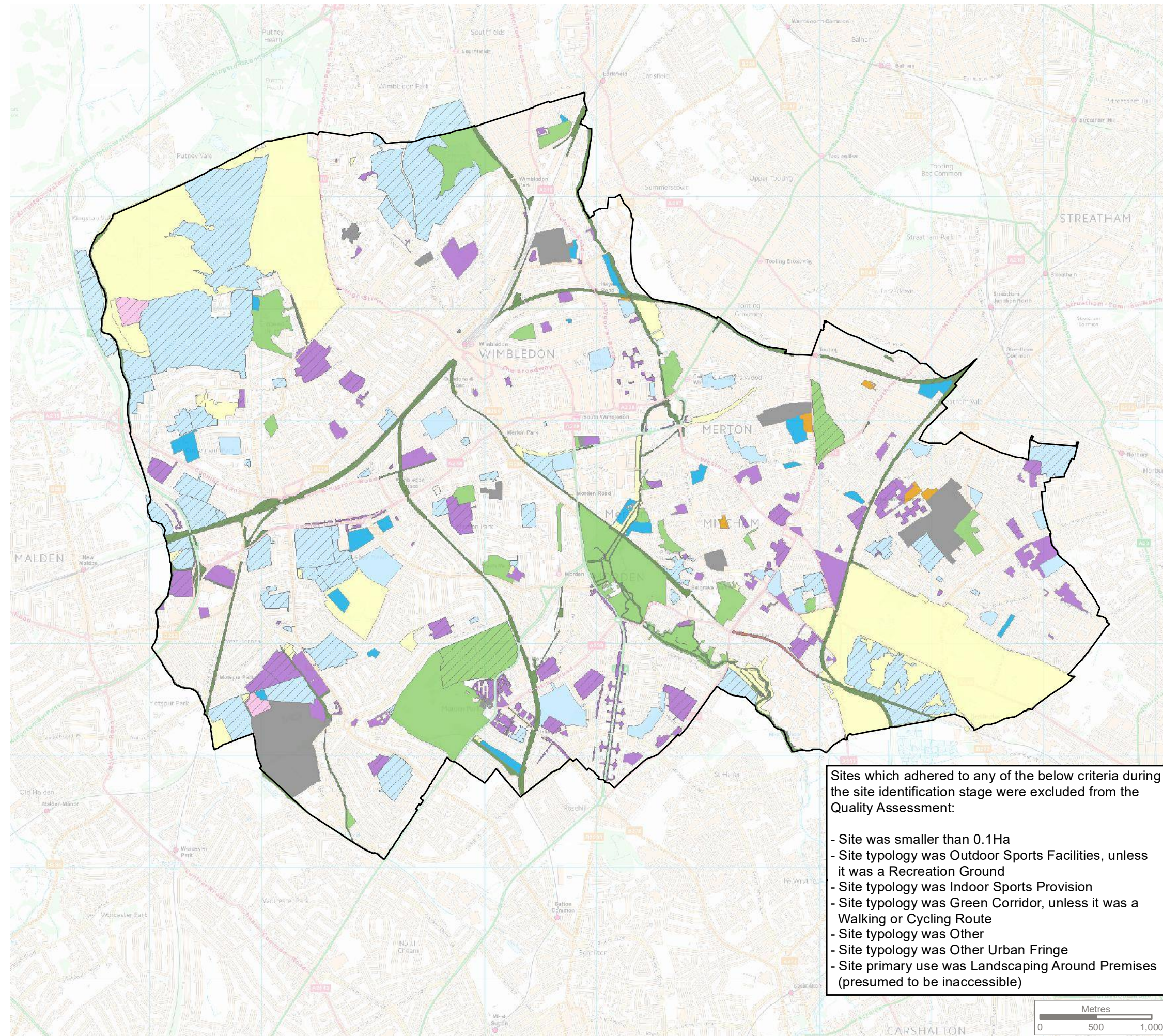
Project
Merton GI, Biodiversity and Open Space Strategy

Title
Open Space Typology Map



Drawing Number
G7118.016.1 Sheet 1 of 4

Drawn	Checked	Approved	Scale	Date
JO	JS	LS	1:35,000 @ A3	19/03/2019






KEY

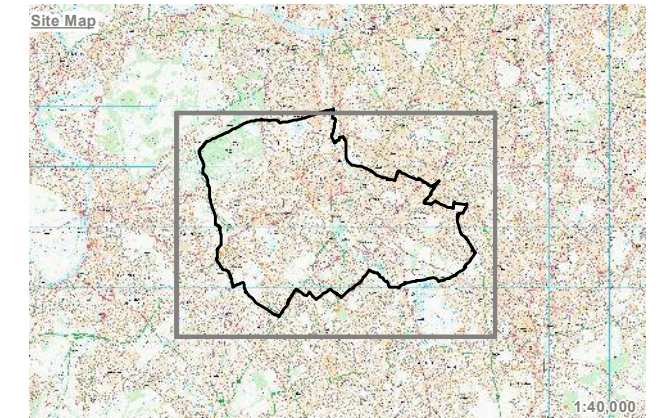
-  London Borough of Merton
-  Site Excluded from Open Space Quality Assessment

PPG17 Open Space Typology

-  Allotments, Community Gardens and City Farms
-  Amenity Space
-  Cemeteries and Churchyards
-  Provision for Children and Teenagers
-  Green Corridors
-  Natural and Semi-Natural Urban Greenspace
-  Outdoor Sports Facilities
-  Parks and Gardens

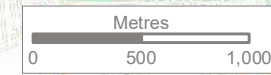


Reproduced by permission of Ordnance Survey on behalf of Her Majesty's Stationery Office. Contains OS data © Crown Copyright and database right 2017. All rights reserved. London Borough of Merton 100019259 2018. Contains Open Spaces Data From Greenspace Information for Greater London (GiGL) CIC, 2018. www.gigl.org.uk



Sites which adhered to any of the below criteria during the site identification stage were excluded from the Quality Assessment:

- Site was smaller than 0.1Ha
- Site typology was Outdoor Sports Facilities, unless it was a Recreation Ground
- Site typology was Indoor Sports Provision
- Site typology was Green Corridor, unless it was a Walking or Cycling Route
- Site typology was Other
- Site typology was Other Urban Fringe
- Site primary use was Landscaping Around Premises (presumed to be inaccessible)



Rev	Description	Drawn	Approved	Date

TEP | **THE ENVIRONMENT PARTNERSHIP**

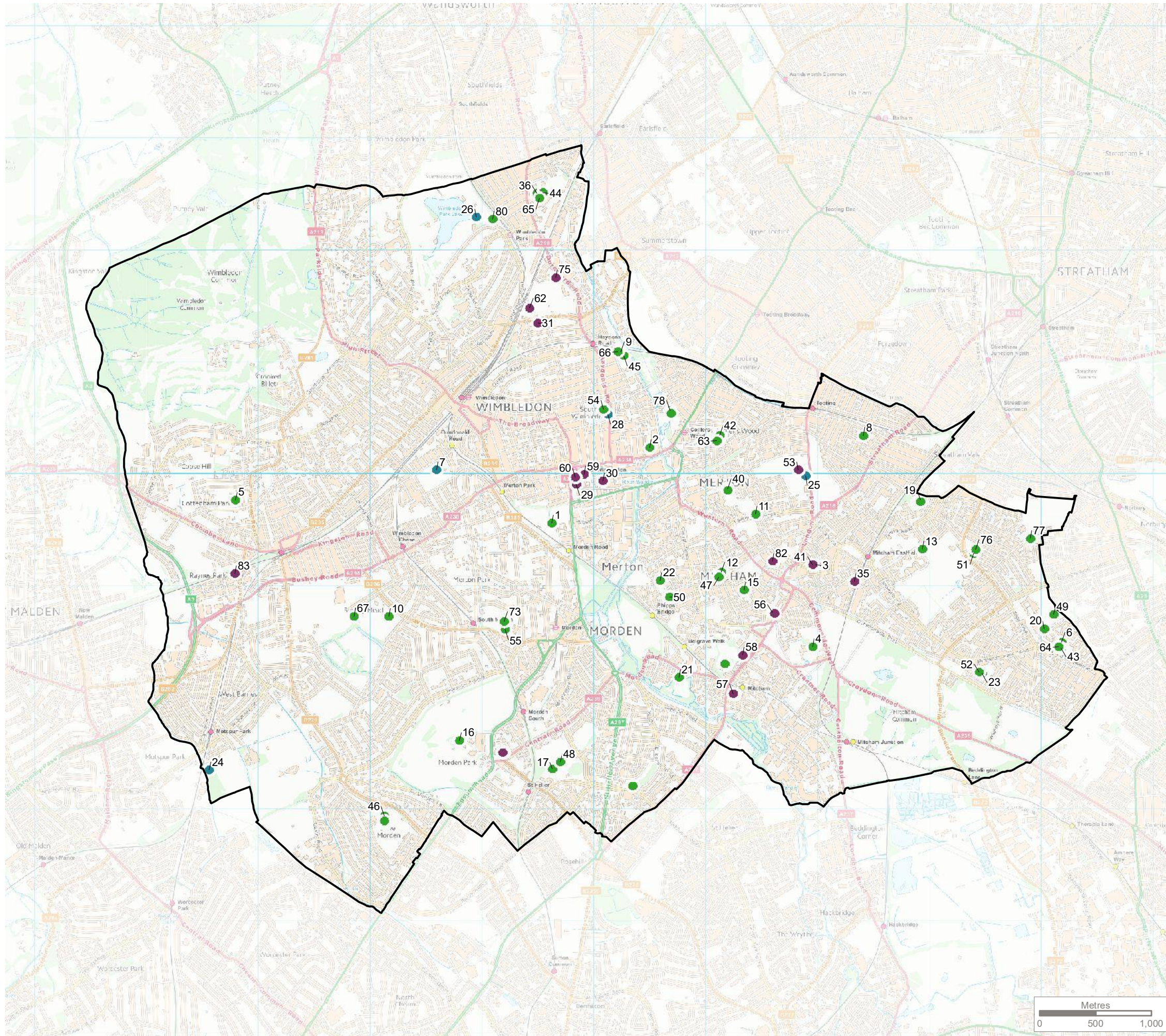
Genesis Centre, Birchwood Science Park, Warrington WA3 7BH
 Tel 01925 844004 e-mail tep@tep.uk.com www.tep.uk.com

Project: Merton GI, Biodiversity and Open Space Strategy

Title: Open Space Quality Assessment - Sites Audited

Drawing Number: G7118.014.1 Sheet 1 of 4

Drawn	Checked	Approved	Scale	Date
JO	JS	LS	1:35,000 @ A3	19/03/2019



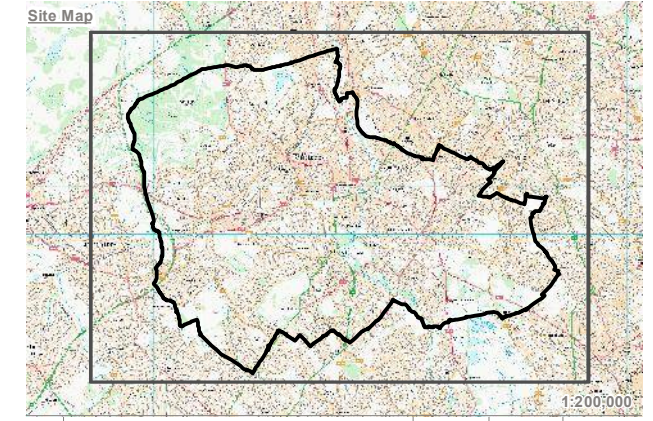
KEY

London Borough of Merton

Play Area Types

- A - Doorstep Playable Spaces
- B - Local Playable Space or Facility
- C - Neighbourhood Playable Space or Facility

Reproduced by permission of Ordnance Survey on behalf of Her Majesty's Stationary Office.
 Contains OS data © Crown Copyright and database right 2017. All rights reserved.
 London Borough of Merton 100019259 2018.



Rev	Description	Drawn	Approved	Date

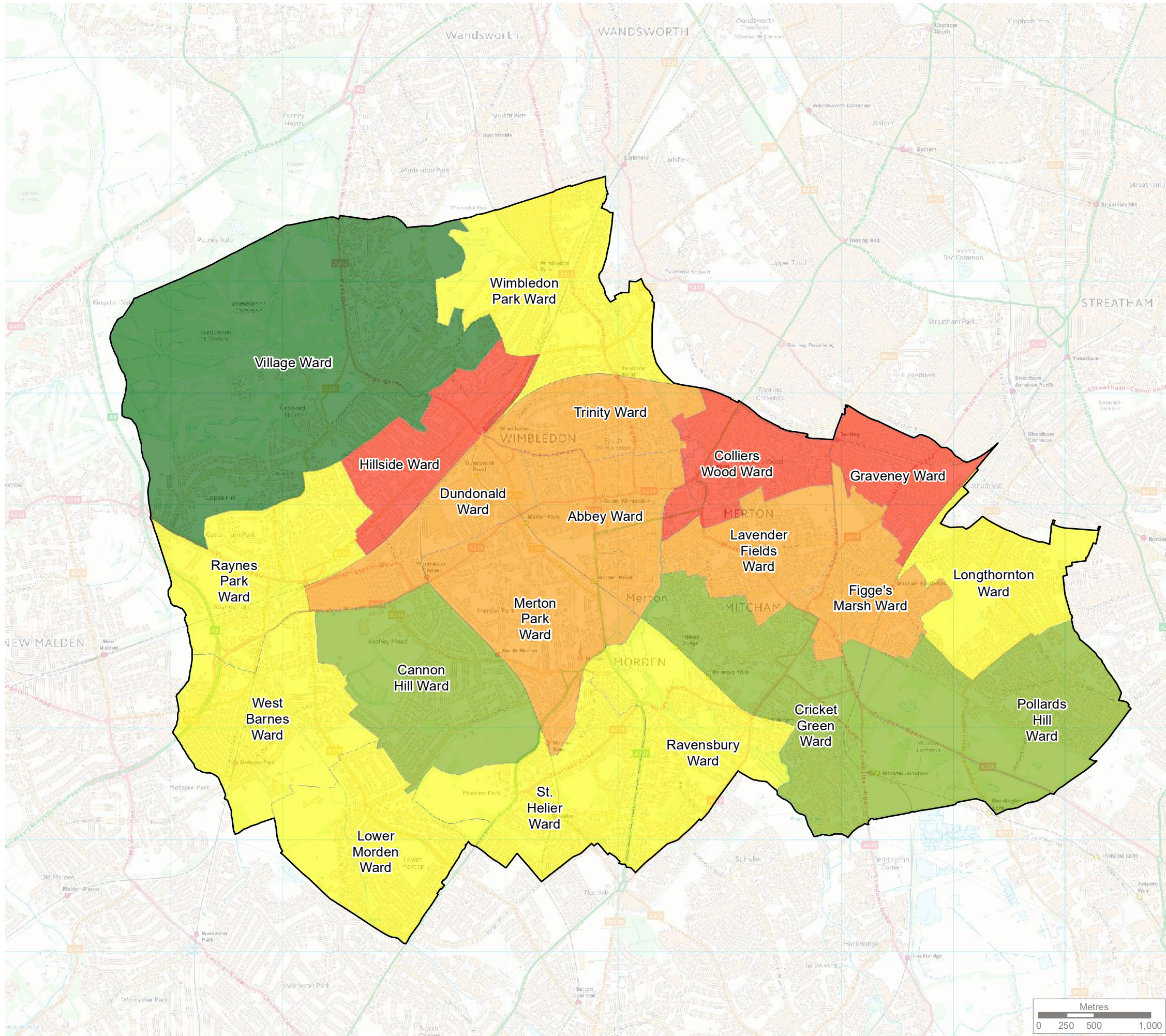
TEP | **THE ENVIRONMENT PARTNERSHIP**
 Genesis Centre, Birchwood Science Park, Warrington WA3 7BH
 Tel 01925 844004 e-mail tep@tep.uk.com www.tep.uk.com

Project
Merton GI, Biodiversity and Open Space Strategy







Title
Play Area Quality Audit Survey - Sites Audited

Drawing Number
G7118.015

Drawn	Checked	Approved	Scale	Date
JO	JS	LS	1:35,000 @ A3	19/12/2018



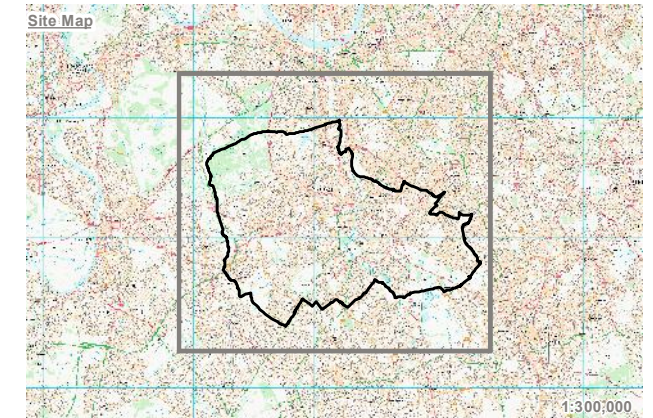
KEY

-  London Borough of Merton
- Open Space Provision by Ha Per 1000**
-  Most Provision
- 
- 
- 
-  Least Provision

The 'Ward Population Projection' Dataset (GLA, 2017) was used to estimate ward populations.



Contains data provided by ONS (2017).
 Reproduced by permission of Ordnance Survey on behalf of Her Majesty's Stationery Office.
 Contains OS data © Crown Copyright and database right 2017. All rights reserved.
 London Borough of Merton 100019259 2018.



Rev	Description	Drawn	Approved	Date

TEP | **THE ENVIRONMENT PARTNERSHIP**

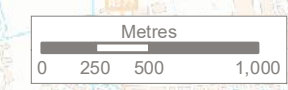
Genesis Centre, Birchwood Science Park, Warrington WA3 7BH
 Tel 01925 844004 e-mail tep@tep.uk.com www.tep.uk.com

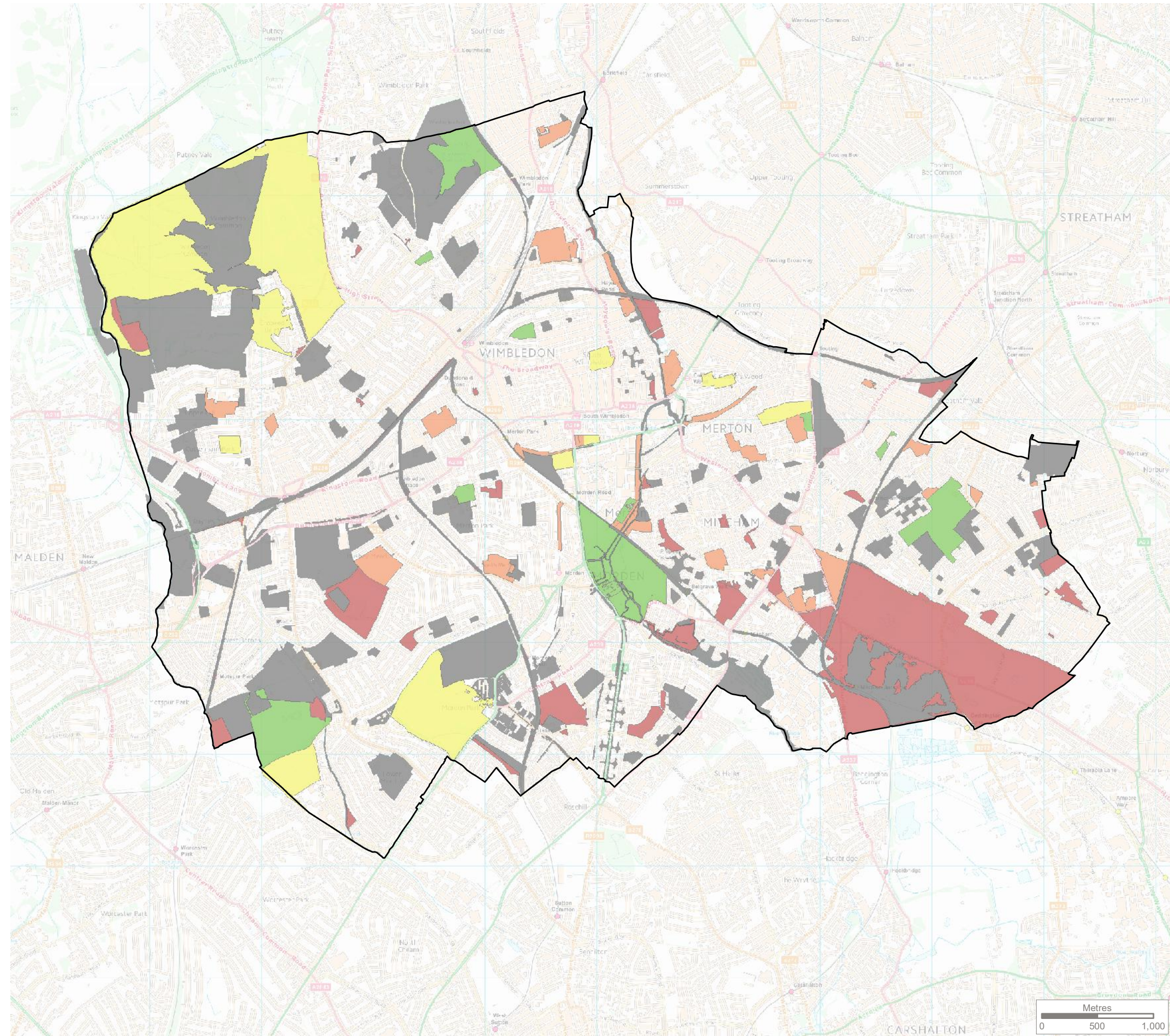
Project
Merton GI, Biodiversity and Open Space Strategy

Title
Open Space Quantity Provision - 2018 Population

Drawing Number
G7118.019

Drawn	Checked	Approved	Scale	Date
JO	JS	LS	1:35,000 @ A3	19/03/2019





KEY

- London Borough of Merton
- Open Space Quality Assessment Score**
- Excellent
- Very Good
- Good
- Fair
- Poor
- Site Inaccessible for Survey

Quality scores were based on the Green Flag grades:

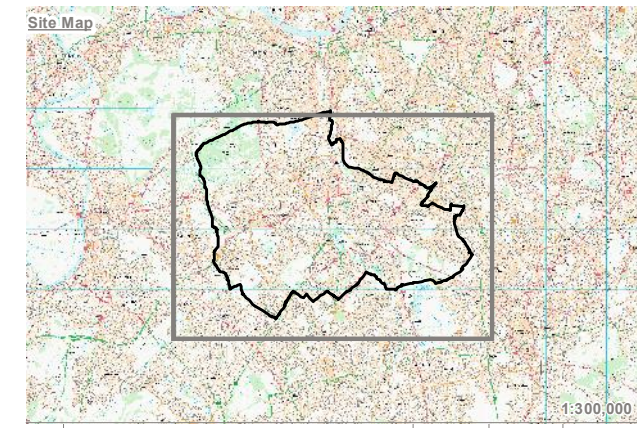
- 90 - 100% Excellent
- 80 - 89% Very Good
- 70 - 79% Good
- 50 - 69% Fair
- 0 - 49% Poor

Open Spaces were assessed on the following criteria based on Green Flag Award:

- Is it a welcoming place?
- Is it a healthy, safe and secure place?
- Is it a well maintained and clean place?



Reproduced by permission of Ordnance Survey on behalf of Her Majesty's Stationery Office.
 Contains OS data © Crown Copyright and database right 2017. All rights reserved.
 London Borough of Merton 100019259 2018.
 Contains Open Spaces Data From Greenspace Information for Greater London (GiGL) CIC, 2018. www.gigl.org.uk



Rev	Description	Drawn	Approved	Date

THE ENVIRONMENT PARTNERSHIP

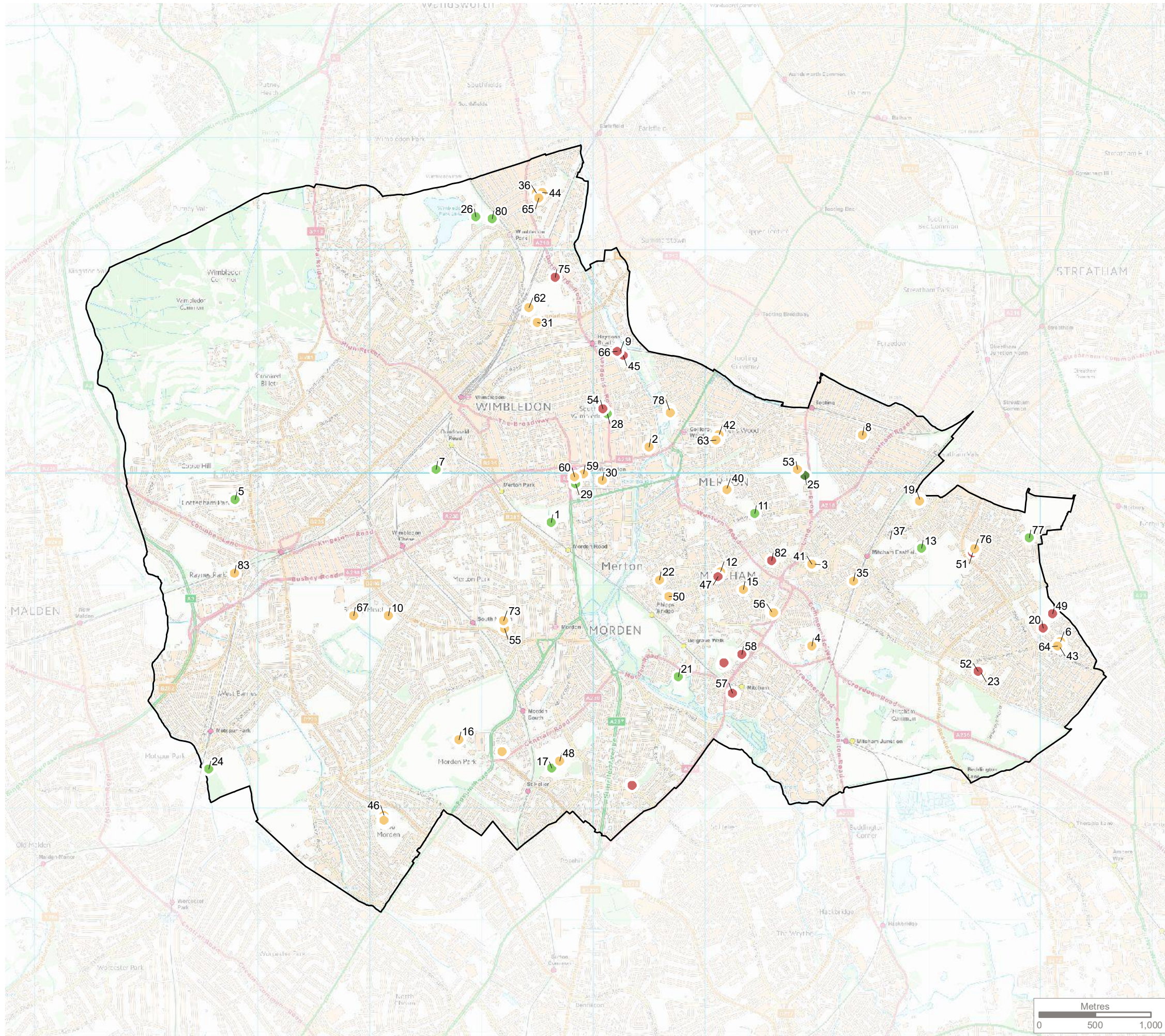
Genesis Centre, Birchwood Science Park, Warrington WA3 7BH
 Tel 01925 844004 e-mail tep@tep.uk.com www.tep.uk.com

Project
Merton GI, Biodiversity and Open Space Strategy

Title
Open Space Quality Assessment - Survey Results

Drawing Number
G7118.017.1 Sheet 1 of 4

Drawn	Checked	Approved	Scale	Date
JO	JS	LS	1:35,000 @ A3	19/03/2019



KEY

London Borough of Merton

Play Area Scores

- Excellent
- Good
- Average - Needs Some Improvement
- Weaknesses - Improvements Needed

Quality scores were based on the Play England grades:

- 80 - 100% Excellent
- 60 - 79% Good
- 40 - 59% Average, Needs Some Improvement
- 20 - 39% Weaknesses, Improvements Needed
- 0 - 19% Serious Weaknesses, Improvements Needed

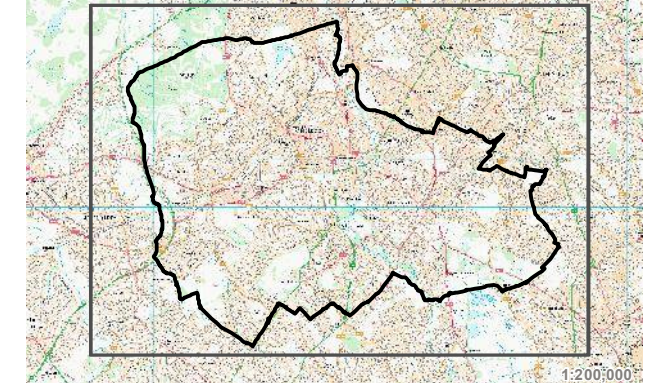
Play Areas were assessed on the following criteria:

- Location
- Play Value
- Care and Maintenance



Reproduced by permission of Ordnance Survey on behalf of Her Majesty's Stationary Office.
 Contains OS data © Crown Copyright and database right 2017. All rights reserved.
 London Borough of Merton 100019259 2018.

Site Map



Rev	Description	Drawn	Approved	Date



THE ENVIRONMENT PARTNERSHIP

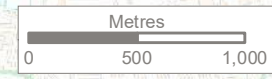
Genesis Centre, Birchwood Science Park, Warrington WA3 7BH
 Tel 01925 844004 e-mail tep@tep.uk.com www.tep.uk.com

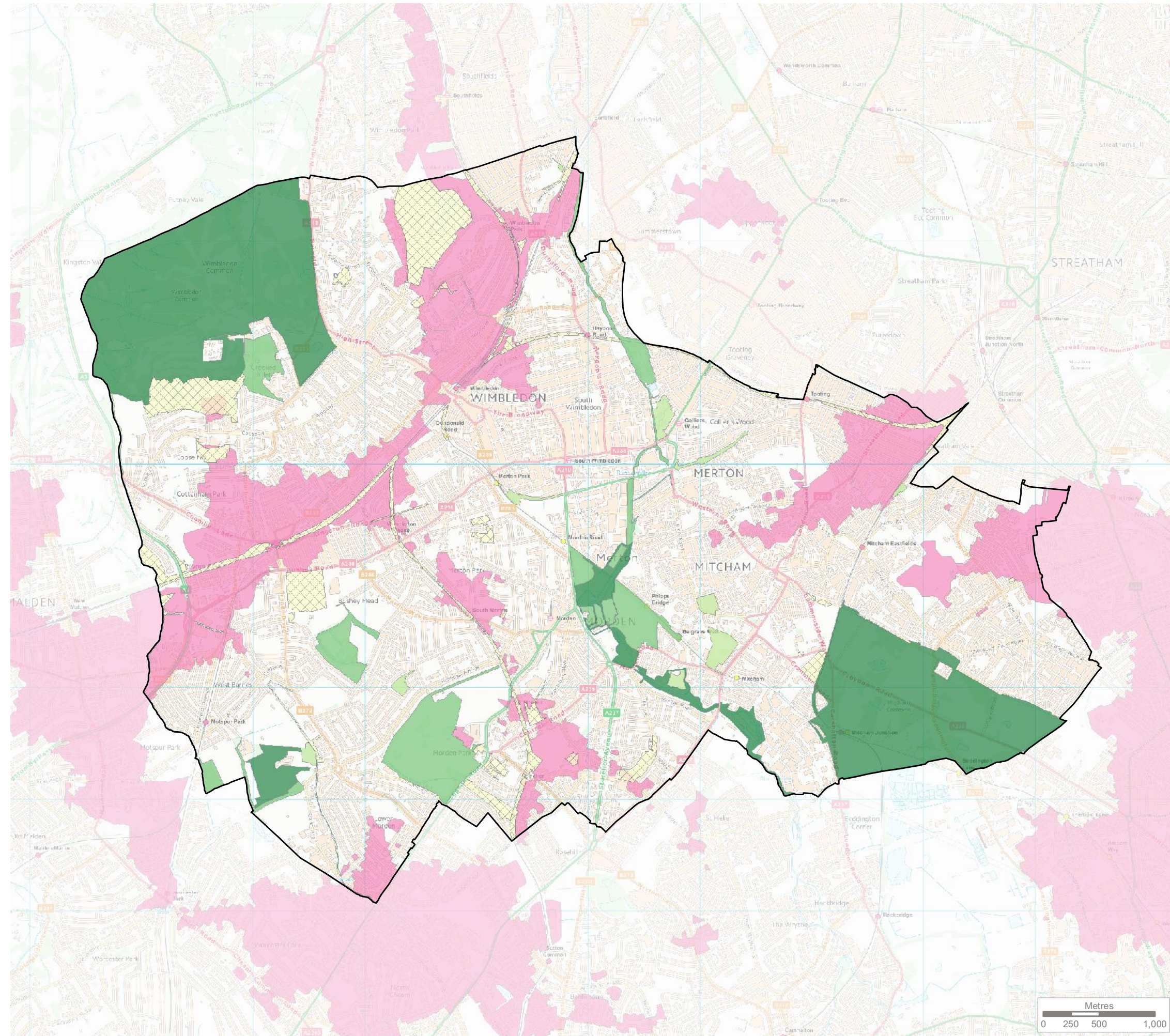
Project
Merton GI, Biodiversity and Open Space Strategy

Title
Play Area Quality Audit Survey - Survey Results

Drawing Number
G7118.018

Drawn	Checked	Approved	Scale	Date
JO	JS	LS	1:35,000 @ A3	22/03/2019





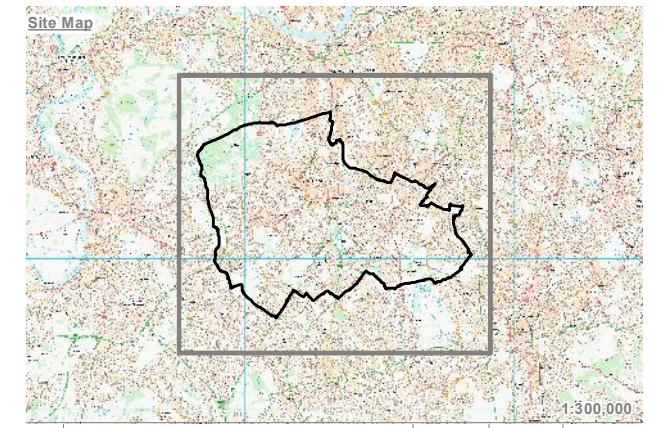
KEY

- London Borough of Merton
- Area of Deficiency in Access to Nature
- Publicly Accessible Site of Importance for Nature Conservation (SINC)**
- Metropolitan
- Borough - Grade 1
- Borough - Grade 2
- SINC Excluded from Area of Deficiency Analysis

The Area of Deficiency is defined as built-up areas which are more than 1km actual walking distance from the entrances of publicly accessible SINCs of Metropolitan and Borough Importance.



Reproduced by permission of Ordnance Survey on behalf of Her Majesty's Stationery Office. Contains OS data © Crown Copyright and database right 2017. All rights reserved. London Borough of Merton 100019259 2018. Contains Open Spaces Data From Greenspace Information for Greater London (GIGL) CIC, 2018. www.gigl.org.uk



Rev	Description	Drawn	Approved	Date

THE ENVIRONMENT PARTNERSHIP

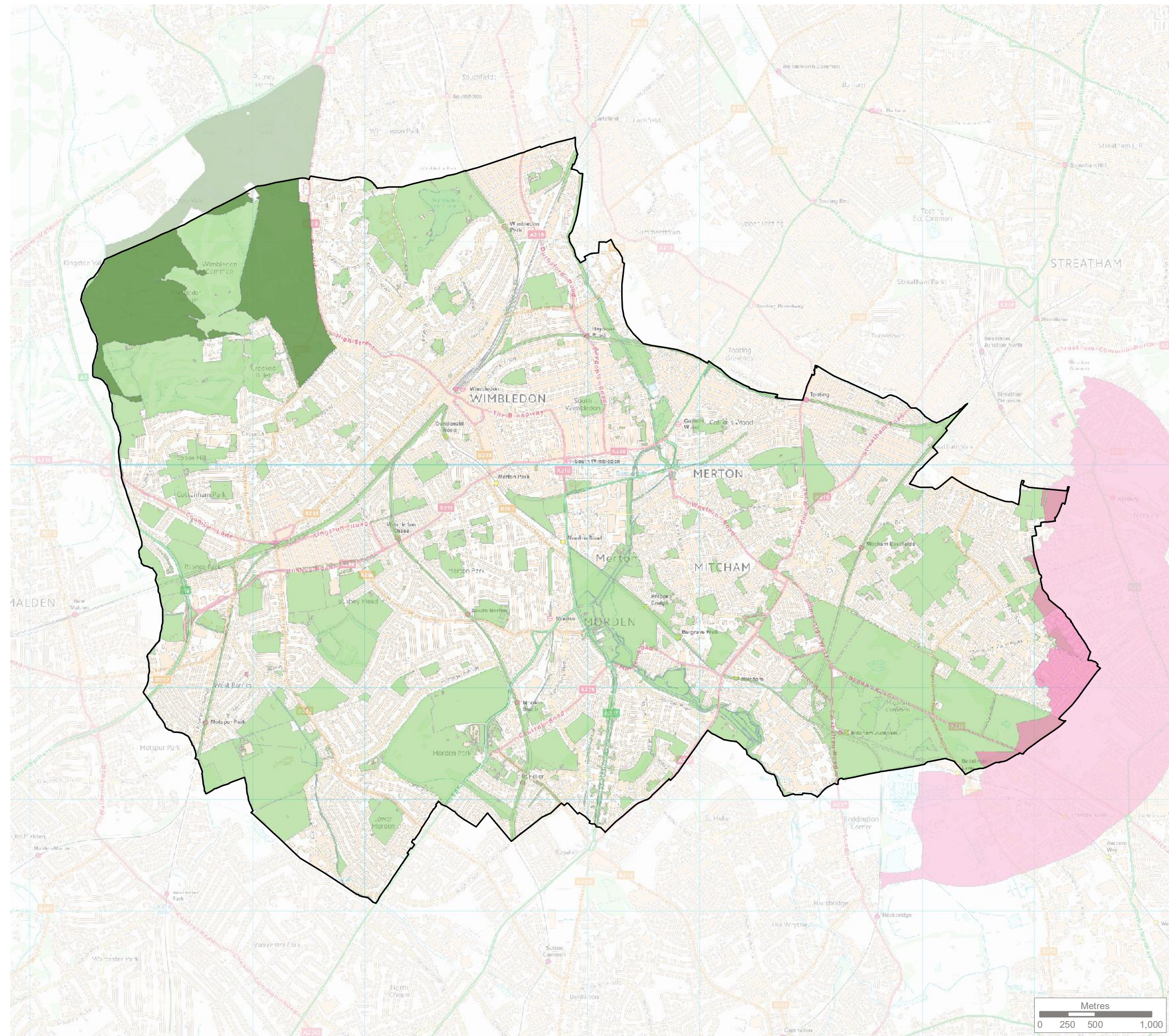
Genesis Centre, Birchwood Science Park, Warrington WA3 7BH
 Tel 01925 844004 e-mail tep@tep.uk.com www.tep.uk.com

Project
Merton GI, Biodiversity and Open Space Strategy

Title
Areas of Deficiency in Access to Nature

Drawing Number
G7118.053

Drawn	Checked	Approved	Scale	Date
JO	JS	LS	1:35,000 @ A3	19/03/2019



KEY

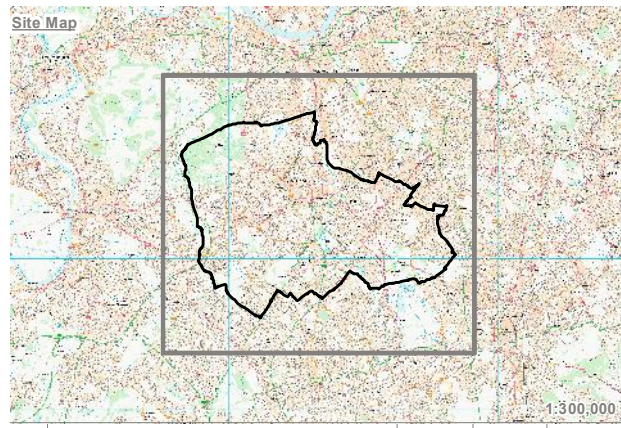
- London Borough of Merton
- Area of Deficiency in Access to Regional Parks
- Publicly Accessible Regional Parks
- Other Open Space Not Included in Area of Deficiency Calculations

Regional Parks are defined by the London Plan (2018) as "Large areas, corridors or networks of open space, the majority of which will be publicly accessible and provide a range of facilities and features offering recreational, ecological, landscape, cultural or green infrastructure benefits. They offer a combination of facilities and features that are unique within London, are readily accessible by public transport and are managed to meet best practice quality standards."

The Area of Deficiency is defined as areas which are more than 8km actual walking distance from the entrances of publicly accessible Regional Parks. The Area of Deficiency does take into account Regional Parks in neighbouring boroughs.

The Area of Deficiency was generated by Greenspace Information for Greater London (GiGL).

Reproduced by permission of Ordnance Survey on behalf of Her Majesty's Stationery Office. Contains OS data © Crown Copyright and database right 2017. All rights reserved. London Borough of Merton 100019259 2018. Contains Open Spaces Data From Greenspace information for Greater London (GiGL) CIC, 2018. www.gigl.org.uk



Rev	Description	Drawn	Approved	Date

TEP | **THE ENVIRONMENT PARTNERSHIP**

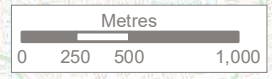
Genesis Centre, Birchwood Science Park, Warrington WA3 7BH
 Tel 01925 844004 e-mail tep@tep.uk.com www.tep.uk.com

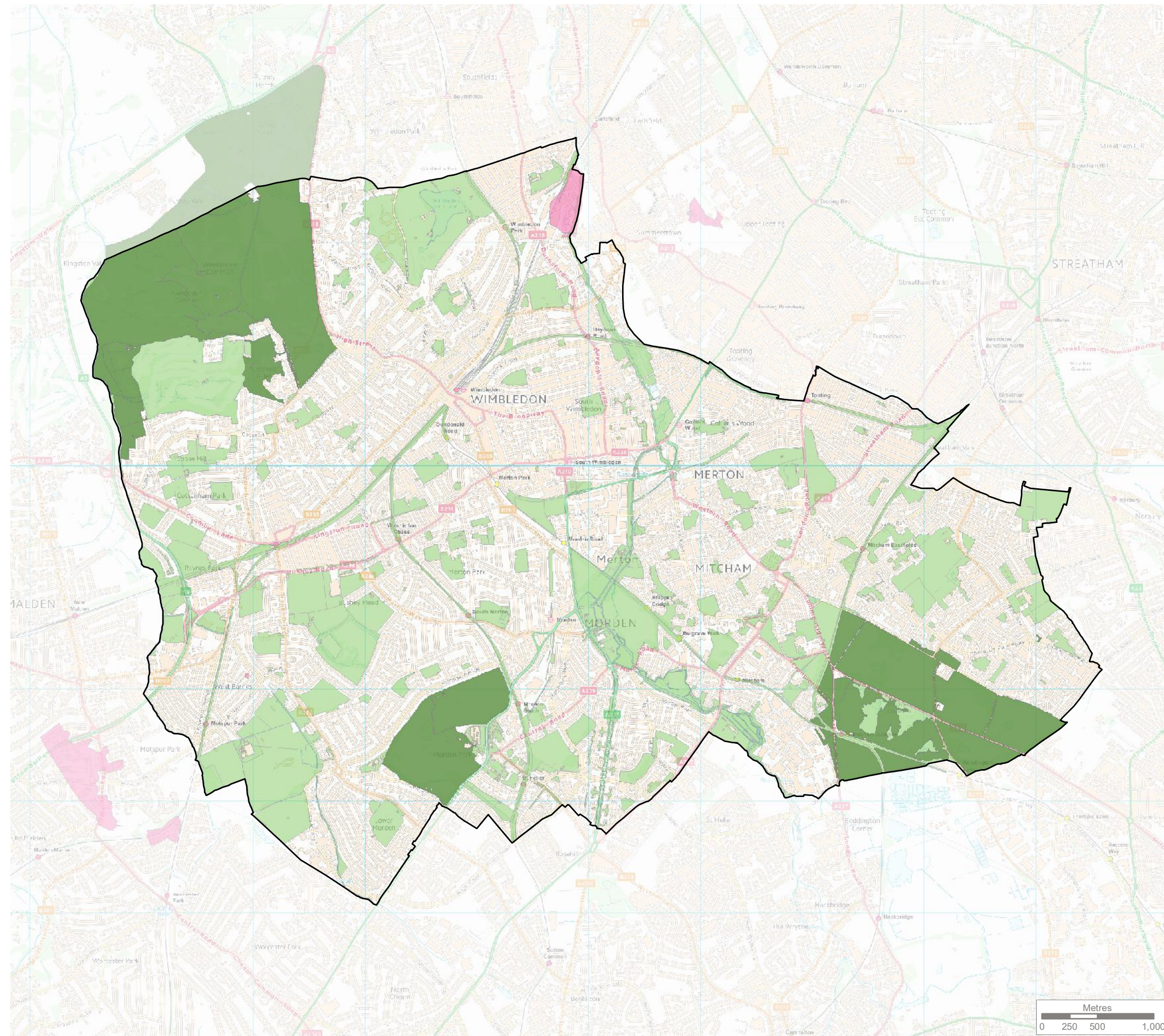
Project
Merton GI, Biodiversity and Open Space Strategy

Title
Areas of Deficiency in Access to Regional Parks

Drawing Number
G7118.054

Drawn	Checked	Approved	Scale	Date
JO	JS	LS	1:35,000 @ A3	19/03/2019





KEY

- London Borough of Merton
- Area of Deficiency in Access to Metropolitan Parks
- Publicly Accessible Metropolitan Parks
- Other Open Space Not Included in Area of Deficiency Calculations

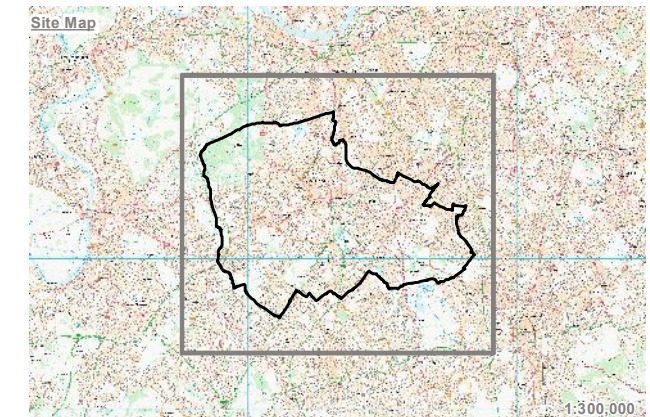
Metropolitan Parks are defined by the London Plan (2018) as "Large areas of open space that provide a similar range of benefits to Regional Parks and offer a combination of facilities at a sub-regional level, are readily accessible by public transport and are managed to meet best practice quality standards."

The Area of Deficiency is defined as areas which are more than 3.2km actual walking distance from the entrances of publicly accessible Metropolitan Parks. The Area of Deficiency does take into account Metropolitan Parks in neighbouring boroughs. Regional Parks are also classed as Metropolitan Parks.

The Area of Deficiency was generated by Greenspace Information for Greater London (GiGL).



Reproduced by permission of Ordnance Survey on behalf of Her Majesty's Stationery Office. Contains OS data © Crown Copyright and database right 2017. All rights reserved. London Borough of Merton 100019259 2018. Contains Open Spaces Data From Greenspace information for Greater London (GiGL) CIC, 2018. www.gigl.org.uk



Rev	Description	Drawn	Approved	Date



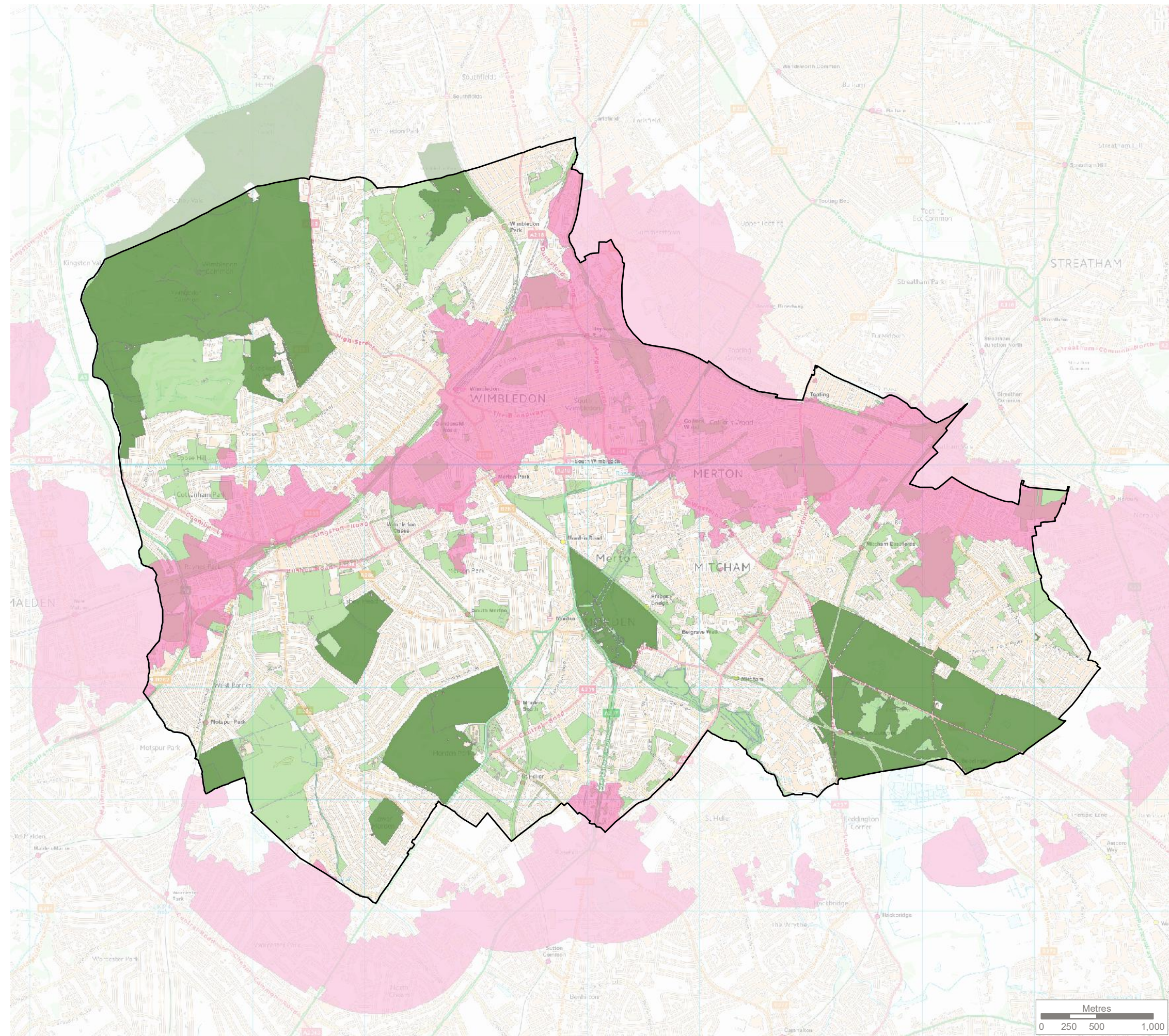
Genesis Centre, Birchwood Science Park, Warrington WA3 7BH
Tel 01925 844004 e-mail tep@tep.uk.com www.tep.uk.com

Project
Merton GI, Biodiversity and Open Space Strategy

Title
Areas of Deficiency in Access to Metropolitan Parks

Drawing Number
G7118.055

Drawn	Checked	Approved	Scale	Date
JO	JS	LS	1:35,000 @ A3	19/03/2019



KEY

- London Borough of Merton
- Area of Deficiency in Access to District Parks
- Publicly Accessible District Parks
- Other Open Space Not Included in Area of Deficiency Calculations

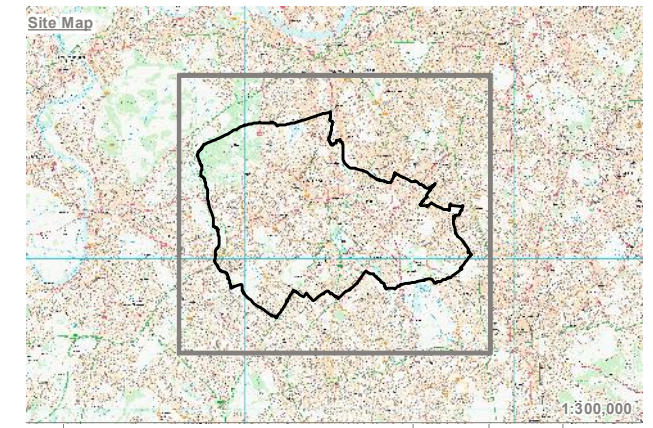
District Parks are defined by the London Plan (2018) as "Large areas of open space that provide a landscape setting with a variety of natural features providing a wide range of activities, including outdoor sports facilities and playing fields, children's play for different age groups and informal recreation pursuits."

The Area of Deficiency is defined as areas which are more than 1.2km actual walking distance from the entrances of publicly accessible District Parks. Regional and Metropolitan Parks are also classed as District Parks. The Area of Deficiency does take into account District Parks in neighbouring boroughs.

The Area of Deficiency was generated by Greenspace Information for Greater London (GiGL).



Reproduced by permission of Ordnance Survey on behalf of Her Majesty's Stationery Office. Contains OS data © Crown Copyright and database right 2017. All rights reserved. London Borough of Merton 100019259 2018. Contains Open Spaces Data From Greenspace information for Greater London (GiGL) CIC, 2018. www.gigl.org.uk



Rev	Description	Drawn	Approved	Date

TEP | **THE ENVIRONMENT PARTNERSHIP**

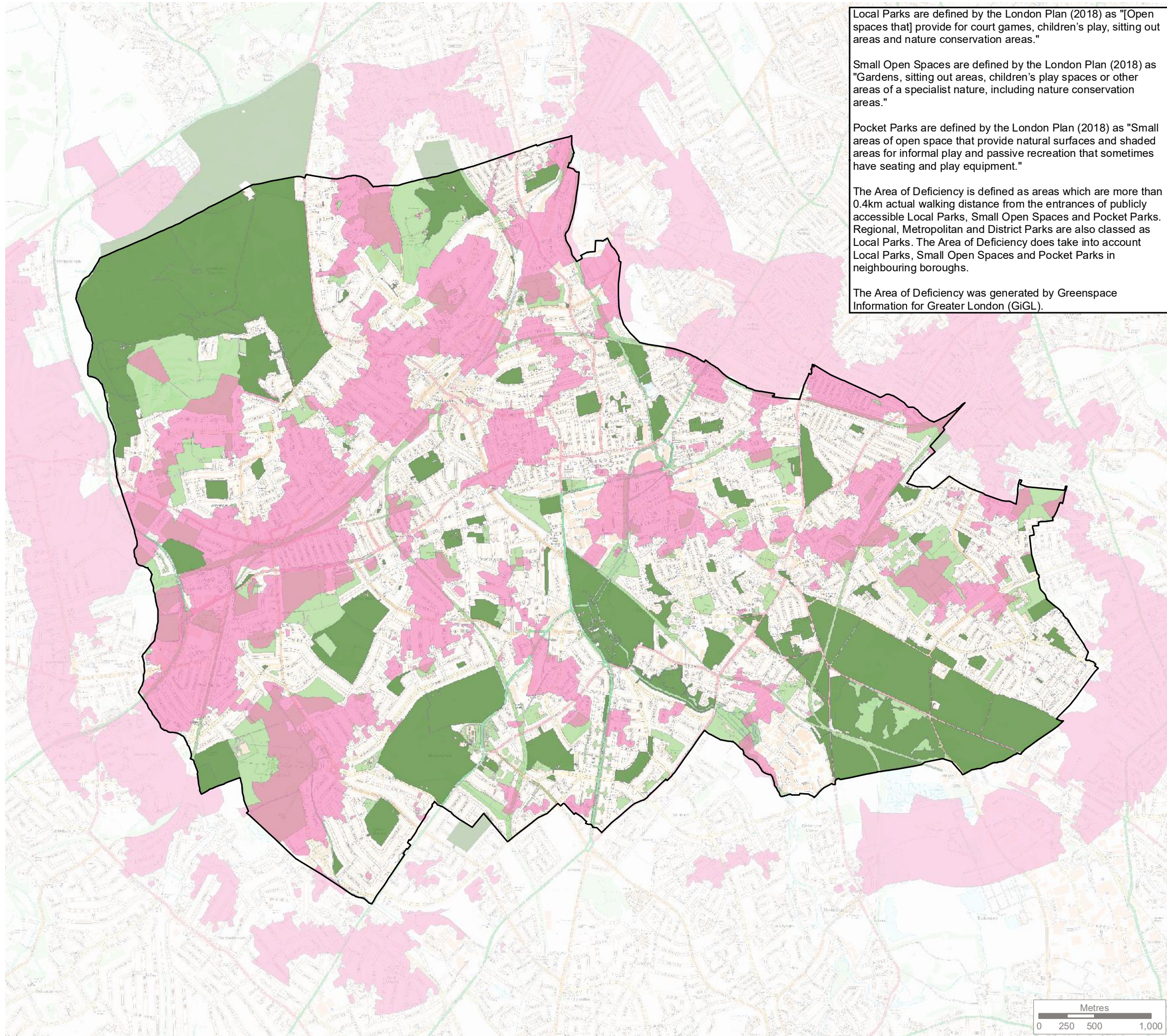
Genesis Centre, Birchwood Science Park, Warrington WA3 7BH
 Tel 01925 844004 e-mail tep@tep.uk.com www.tep.uk.com

Project
Merton GI, Biodiversity and Open Space Strategy

Title
Areas of Deficiency in Access to District Parks

Drawing Number
G7118.056

Drawn	Checked	Approved	Scale	Date
JO	JS	LS	1:35,000 @ A3	19/03/2019






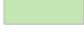
Local Parks are defined by the London Plan (2018) as "[Open spaces that] provide for court games, children's play, sitting out areas and nature conservation areas."

Small Open Spaces are defined by the London Plan (2018) as "Gardens, sitting out areas, children's play spaces or other areas of a specialist nature, including nature conservation areas."

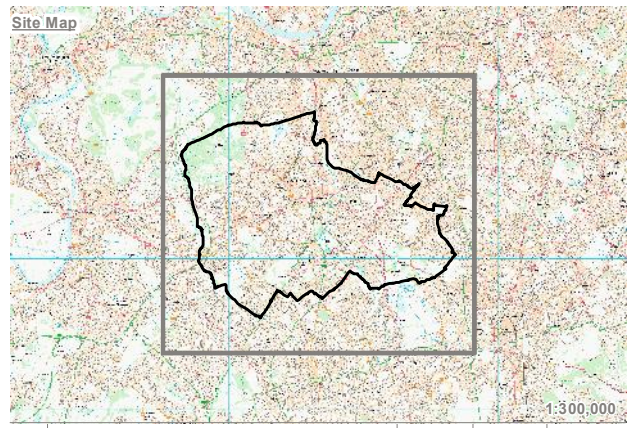
Pocket Parks are defined by the London Plan (2018) as "Small areas of open space that provide natural surfaces and shaded areas for informal play and passive recreation that sometimes have seating and play equipment."

The Area of Deficiency is defined as areas which are more than 0.4km actual walking distance from the entrances of publicly accessible Local Parks, Small Open Spaces and Pocket Parks. Regional, Metropolitan and District Parks are also classed as Local Parks. The Area of Deficiency does take into account Local Parks, Small Open Spaces and Pocket Parks in neighbouring boroughs.

The Area of Deficiency was generated by Greenspace Information for Greater London (GiGL).

- KEY**
-  London Borough of Merton
 -  Area of Deficiency for Access to Local Parks, Small Open Spaces and Pocket Parks
 -  Publicly Accessible Local Parks, Small Open Spaces and Pocket Parks
 -  Other Open Space Not Included in Area of Deficiency Calculations

Reproduced by permission of Ordnance Survey on behalf of Her Majesty's Stationery Office.
 Contains OS data © Crown Copyright and database right 2017. All rights reserved.
 London Borough of Merton 100019259 2018.
 Contains Open Spaces Data From Greenspace information for Greater London (GiGL) CIC, 2018. www.gigl.org.uk



Rev	Description	Drawn	Approved	Date

TEP | **THE ENVIRONMENT PARTNERSHIP**

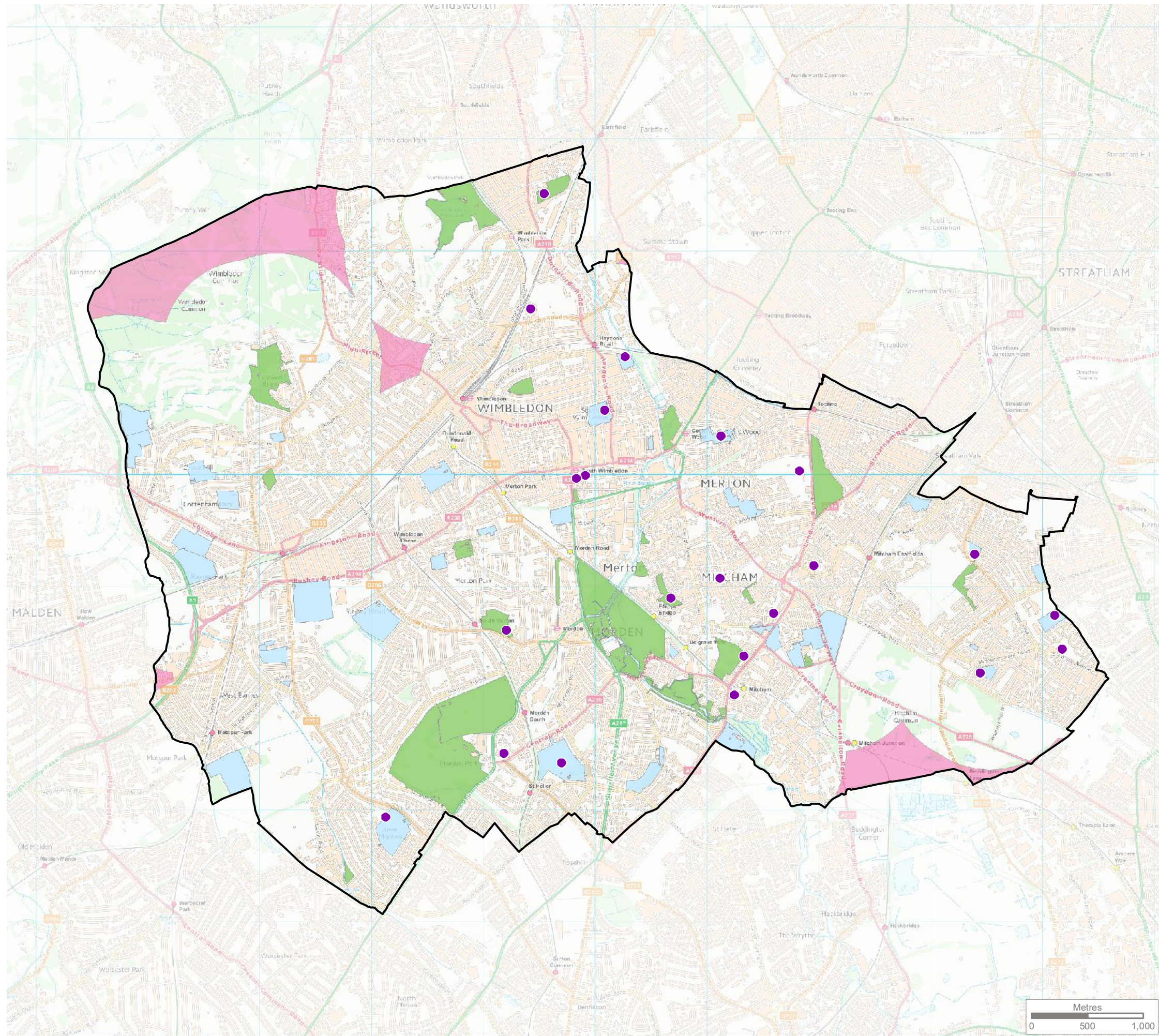
Genesis Centre, Birchwood Science Park, Warrington WA3 7BH
 Tel 01925 844004 e-mail tep@tep.uk.com www.tep.uk.com

Project
Merton GI, Biodiversity and Open Space Strategy

Title
Areas of Deficiency in Access to Local Parks, Small Open Spaces and Pocket Parks

Drawing Number
G7118.057

Drawn	Checked	Approved	Scale	Date
JO	JS	LS	1:35,000 @ A3	19/03/2019



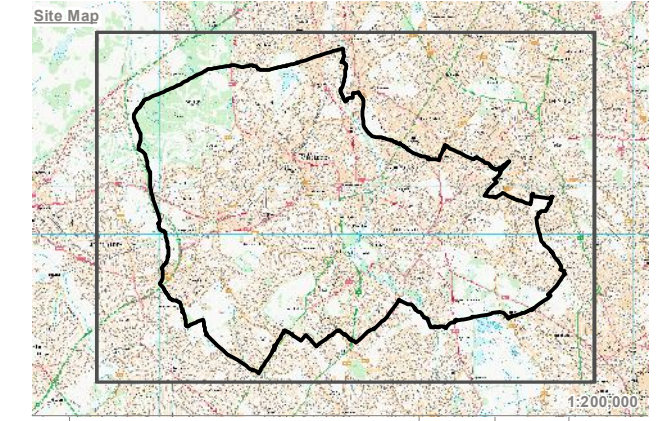
KEY

- London Borough of Merton
- Play Areas for Children Over 12 Years Old
- Play Areas for Other Age Groups
- Area of Deficiency in Access to Play Areas for Children Over 12 Years Old
- Outdoor Sports Facilities without Access Restrictions
- Parks and Gardens without Access Restrictions

The London Plan SPG (2012) defines what is considered as a play area for children over 12 years old as 'Adventure Playgrounds, Sport or recreation space that is open access, Skatepark, bike park or other wheeled facility, Fitness trails or other age appropriate equipped areas, Outdoor stage, Youth shelters'.

The Area of Deficiency is defined as areas which are more than 800m actual walking distance away from play areas for children over 12 years old

Reproduced by permission of Ordnance Survey on behalf of Her Majesty's Stationary Office.
 Contains OS data © Crown Copyright and database right 2017. All rights reserved.
 London Borough of Merton 100019259 2018.



Rev	Description	Drawn	Approved	Date

TEP | **THE ENVIRONMENT PARTNERSHIP**

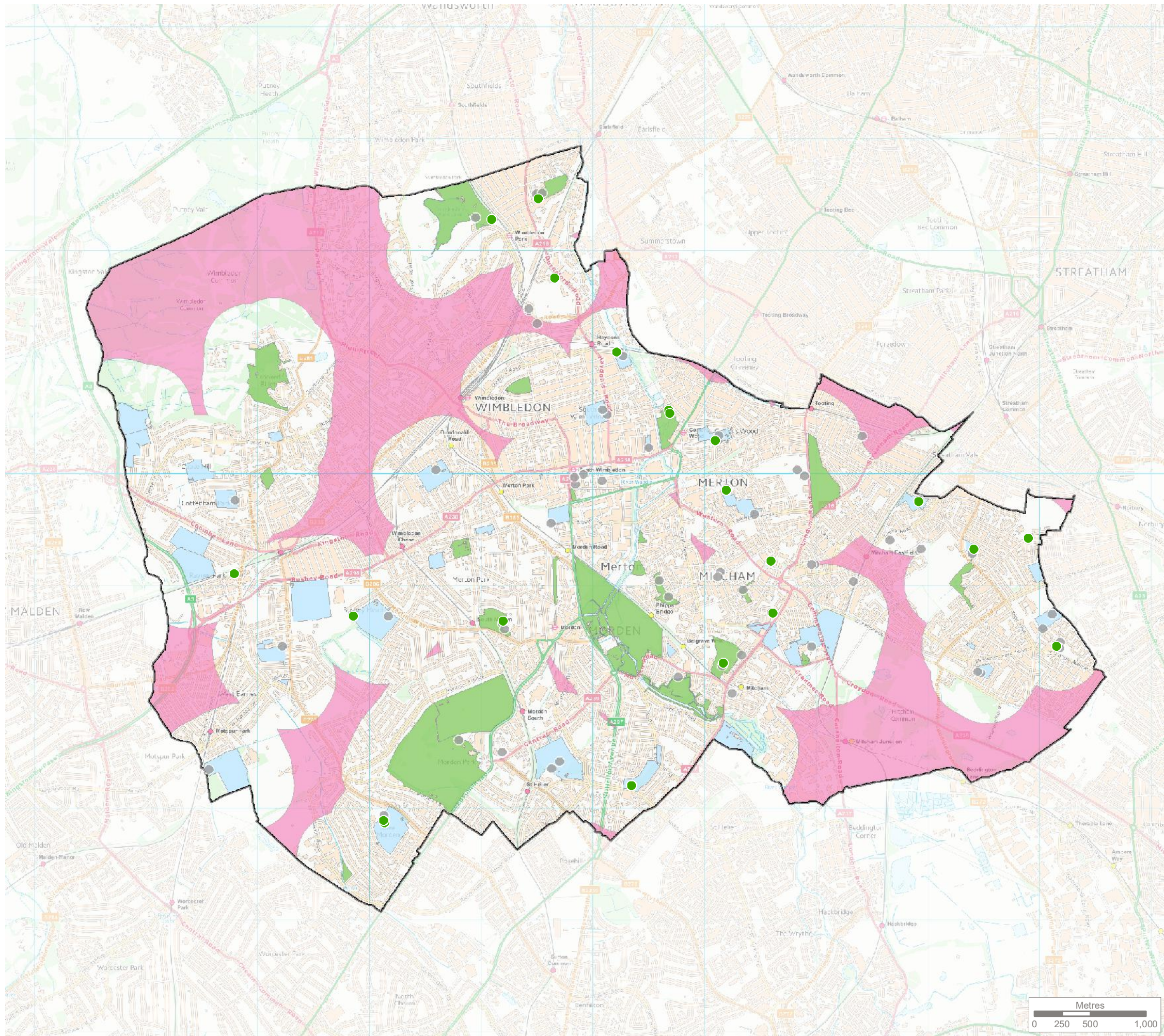
Genesis Centre, Birchwood Science Park, Warrington WA3 7BH
 Tel 01925 844004 e-mail tep@tep.uk.com www.tep.uk.com

Project
Merton GI, Biodiversity and Open Space Strategy

Title
Area of Deficiency in Access to Play Areas for Children Over 12 Years Old

Drawing Number
G7118.058

Drawn	Checked	Approved	Scale	Date
JO	JS	LS	1:35,000 @ A3	19/03/2019



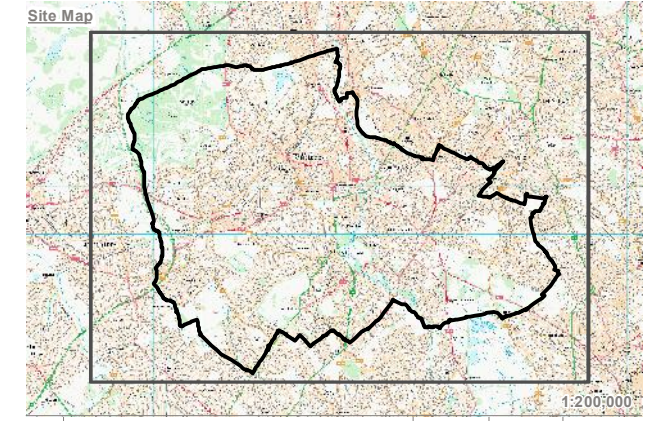
KEY

- London Borough of Merton
- Play Areas for Children 5 - 12 Years Old
- Play Areas for Other Age Groups
- Area of Deficiency in Access to Play Areas for Children Between 5 and 12 Years Old
- Outdoor Sports Facilities without Access Restrictions
- Parks and Gardens without Access Restrictions

The London Plan SPG (2012) defines what is considered as a play area for children between 5 and 12 years old as "Equipped age appropriate play area, Public open spaces with potential for informal play, Kickabout areas, Adventure playgrounds, Skatepark, bike park or other wheeled facility."

The Area of Deficiency is defined as areas which are more than 400m actual walking distance away from play areas for children between 5 and 12 years old.

Reproduced by permission of Ordnance Survey on behalf of Her Majesty's Stationary Office.
 Contains OS data © Crown Copyright and database right 2017. All rights reserved.
 London Borough of Merton 100019259 2018.



Rev	Description	Drawn	Approved	Date

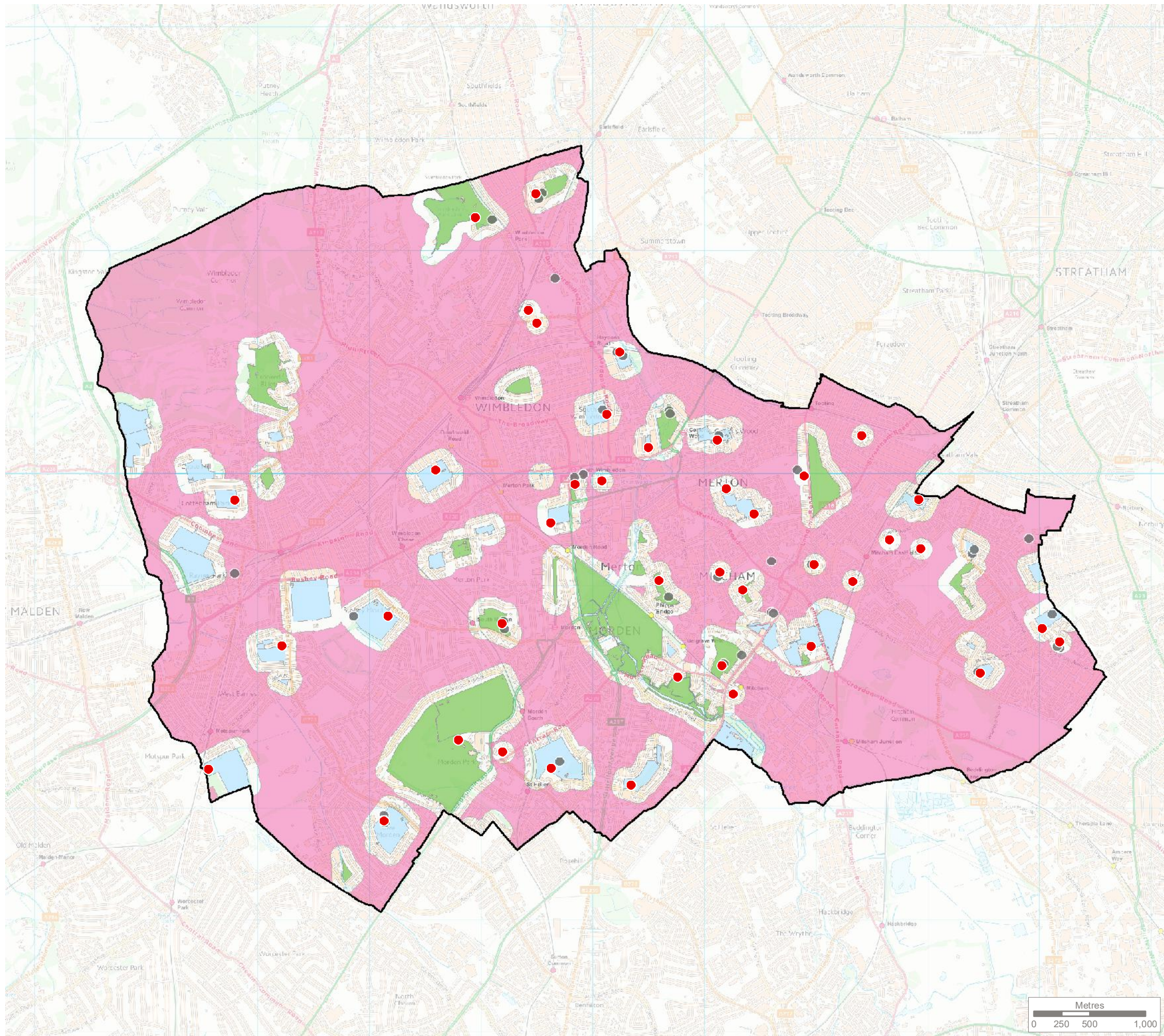
TEP | **THE ENVIRONMENT PARTNERSHIP**
 Genesis Centre, Birchwood Science Park, Warrington WA3 7BH
 Tel 01925 844004 e-mail tep@tep.uk.com www.tep.uk.com

Project
Merton GI, Biodiversity and Open Space Strategy

Title
Area of Deficiency in Access to Play Areas for Children Between 5 and 12 Years Old

Drawing Number
G7118.059

Drawn	Checked	Approved	Scale	Date
JO	JS	LS	1:35,000 @ A3	19/03/2019



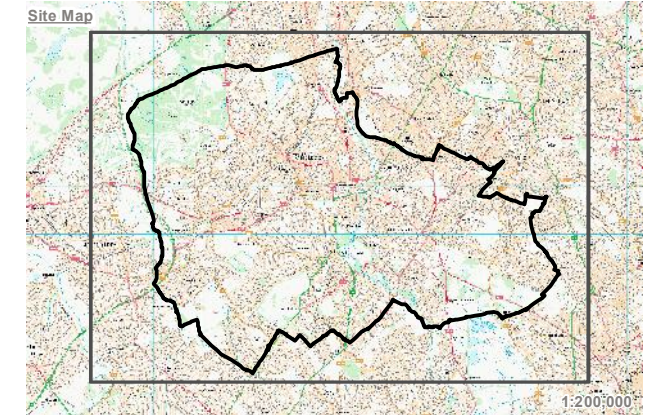
KEY

- London Borough of Merton
- Play Areas for Children Under 5 Years Old
- Play Areas for Other Age Groups
- Area of Deficiency in Access to Play Areas for Children Under 5 Years Old
- Outdoor Sports Facilities without Access Restrictions
- Parks and Gardens without Access Restrictions

The London Plan SPG (2012) defines what is considered as a play area for children under 5 years old as "Small age appropriate equipped play area, Public open spaces with potential for informal play."

The Area of Deficiency is defined as areas which are more than 100m actual walking distance away from play areas for children under 5 years old

Reproduced by permission of Ordnance Survey on behalf of Her Majesty's Stationary Office.
 Contains OS data © Crown Copyright and database right 2017. All rights reserved.
 London Borough of Merton 100019259 2018.



Rev	Description	Drawn	Approved	Date



Genesis Centre, Birchwood Science Park, Warrington WA3 7BH
 Tel 01925 844004 e-mail tep@tep.uk.com www.tep.uk.com

Project
Merton GI, Biodiversity and Open Space Strategy

Title
Area of Deficiency in Access to Play Areas for Children Under 5 Years Old

Drawing Number
G7118.060

Drawn	Checked	Approved	Scale	Date
JO	JS	LS	1:35,000 @ A3	19/03/2019