


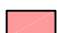
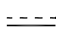
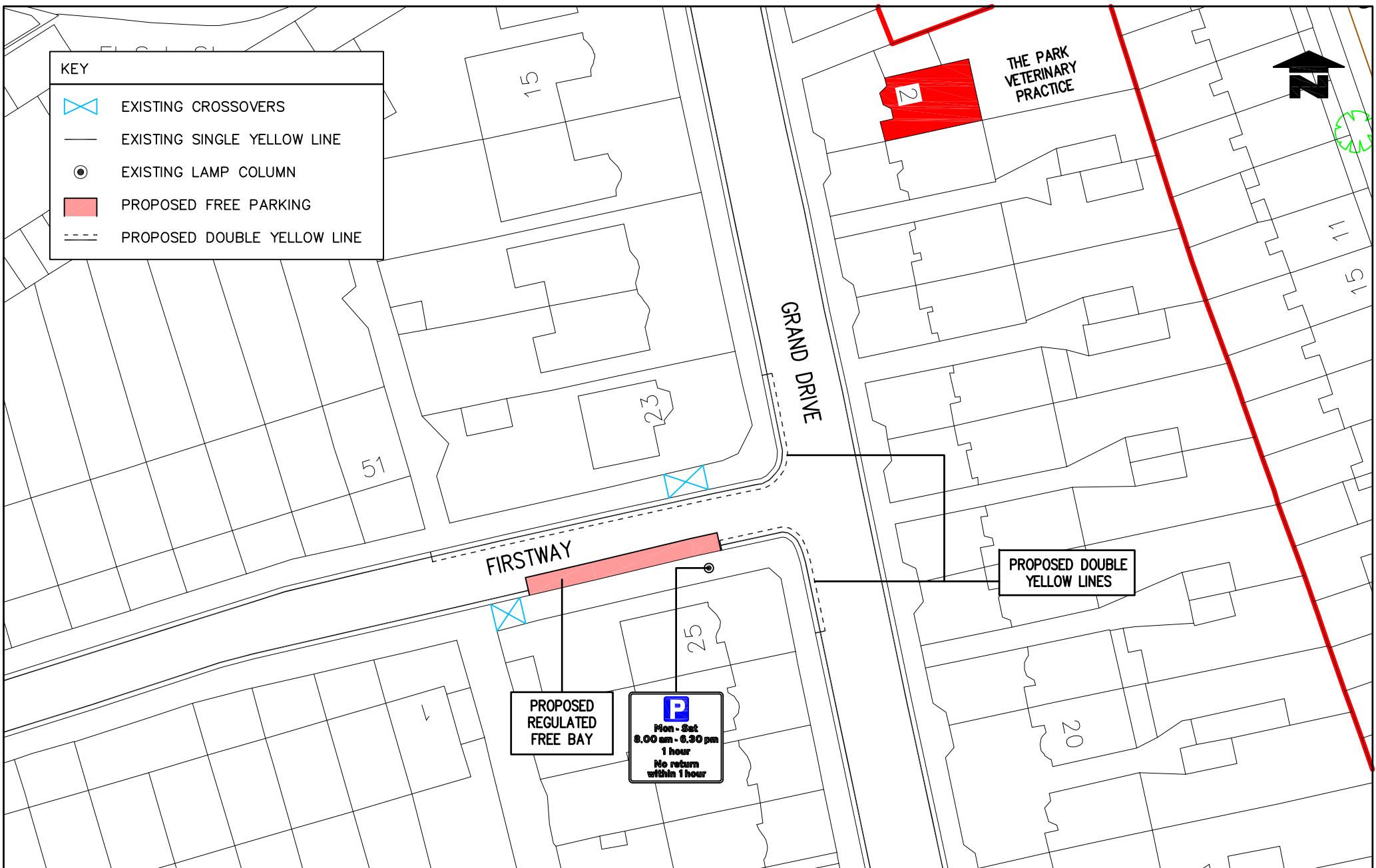


KEY

-  EXISTING CROSSOVERS
-  EXISTING SINGLE YELLOW LINE
-  EXISTING LAMP COLUMN
-  PROPOSED FREE PARKING
-  PROPOSED DOUBLE YELLOW LINE



Notes
Do not scale from this drawing

Rev.	Revisions	Drawn	Skj.	Date	Chkd.	Skj.	Date	App.	Skj.	Date



TRAFFIC & HIGHWAYS

Reproduced from/based upon the Ordnance Survey's 1:250 maps with the permission of the Controller of H.M.S.O., Crown Copyright Reserved. Unauthorised reproduction infringes Crown copyright and may lead to prosecution or civil proceedings.
London Borough of Merton 100019259 2013

Drawn by L.M.	Slp.	Date Jul '13
Checked by	Slp.	Date
Approved by	Slp.	Date

PROJECT
Miscellaneous Parking Amendments

TITLE
Proposed Parking Provision Firstway



Merton Civic Centre
London Road
Morden, Surrey
SM4 5DX
www.merton.gov.uk

Drawing No.	Z78-214-01-01
Revision	-
Classification	T.M.O.
Scale	1:500