

40-11

DWG 40-10

SIM. 40-40

Stud line marks 2m line of PH ownership

MIN 1:60 FALLS TOWARD DRAINS, WITH CROSS FALLS

1:60 FALLS TOWARD DRAINS, WITH CROSS FALLS

PH garden entrance: Existing Pub Access to be maintained

Fence to be installed by Pub owners gates as set out on drawings

PH goods deliveries: Existing Pub Access to be maintained

Kerb line around tree pit raised by 100mm above carriageway to deter parking

Kerb line around tree pit raised by 100mm above carriageway to deter parking

Kerb line around tree pit raised by 100mm above carriageway to deter parking

Manual lockable bollard key holders: 1. LBM Council Highways Authority 2. PH 3. Emergency Services

Disabled parking bay marking to be formed of granite cobble in contrasting colour to surrounding cobbles

MIN 1:60 FALLS TOWARD DRAINS, WITH CROSS FALLS

CCTV

RESIDENTIAL BIN STORE

PUB BIN STORE

11.59m EX

12. 43. 3.

2. 43.

11. 43. 3.

11. 43. 3.

1. 43.

6.

3. 12. 43.

3. 12. 43.

12. 43. 3.

1. 12. 43. 3.

LEVEL ACCESS ACROSS THRESHOLD 11.88

LEVEL ACCESS ACROSS THRESHOLD 11.88

6000

6000

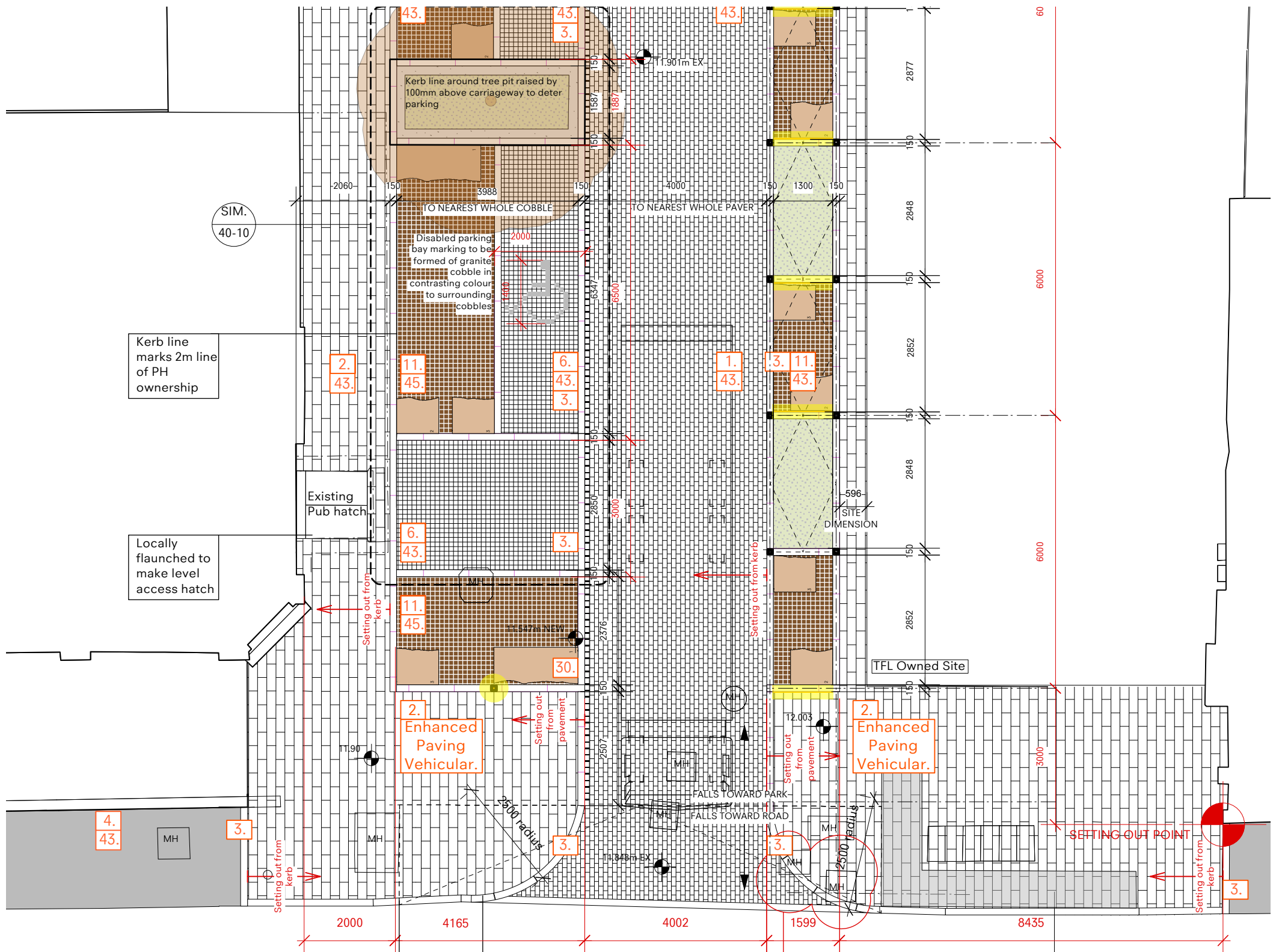
6000

6000

00

TO NEAREST WHOLE PAVER

2823



Kerb line marks 2m line of PH ownership

Locally launched to make level access hatch

NOTE: Space left for vehicular turning circles is indicative - LBM Traffic Engineers to check and verify

Dotted line indicates area with falls/cross falls to create flush entrance to Baltic Close

Contrasting kerb (see 3.) flush with pavement and graded access into Baltic Close. Both sides to match and all graded to suit existing.

Kerblines and Manhole - final radius of kerblines to be confirmed on site with Architect following site inspection of manhole location and type

Tactile paving studs inset into granite to be maintained - completed TFL as part of pavement works.

Key
(refer schedule of finishes)

SUB-BASE BUILD UP TO ENGINEER'S SPECIFICATION

- 1. Enhanced Paving (Vehicular)**
Marshalls Flamed Granite Blocks 200x100x80mm
Ref: Black GRA921 (or Charcon Equivalent)
Ensure that all paving is laid to 1:60 falls with cross falls towards the drains/rain gardens
- 2. Enhanced Paving (Pedestrian)**
Marshalls Flamed Granite Blocks 200x600x60mm
Ref: Black GRA921 (or Charcon Equivalent)
Ensure that all paving is laid to 1:60 falls with cross falls towards the drains/rain gardens
- 3. Kerb Stone**
Marshalls Fine Picked Granite 200x300x1000mm
Ref: Silver Grey GRA917
- 4. Standard Paving** - Marshalls Metrolinia Concrete Block
80 set in 130 and 160 guages 130x320/400/480 and 160x320/400/480
Ref: City Charcoal Grey PV577210
- 5. SUDS Cobbles**
Hanson EcoGranite Cobbles Balmoral (Dark Grey) 100 x 100 Depth 60mm or 100 x 100 Depth 80mm SE to confirm. Laid in grid pattern. SUDS build-up underneath
- 6. Granite Cobbles**
Charcon Chamfered Chinese Granite Flamed Cobble 100x100x100
Ref: Dark Grey G2020
- 10. Ceramic Glazed Brick Slip**
Robus Ceramics Glazed Brick Slips 215x65x25/30mm
(Gold, Pewter, Texter Pewter)
- 11. Rain Garden Finish**
M K Enterprises Timber Cobble (charred finish) 100x100x125 Chamfered corner
- 12. Enhanced Paving**
Ketley Engineering Brick-Staffordshire Blue 102.5x215x65 Diamond chequer paver
- Gravel Fill**
Refer to Engineers Drawings
- 20. Timber and Metal Seat**
Montseny Natural oak and powder coated aluminium seat 600mm x 575mm x 830mm
- 21. Bike Stands**
Marshalls Sheffield Stands Stainless Steel 750 x 50
- 22. Column Light**
- 23. LED Strip Light**
- 25. Fence**
Marshalls Harbour 3 rail Ferrocast RAL painted (as drawn)
- Make good** existing finished 2meter from new junction
- 30. Bespoke Timber Bench**
Oak block with top CNC engraved Natural finish 1850 x 800 x 400 and 925 x 800 x 400
- Existing Trees**
- New Trees**
- Feature Trees**
- New Planting**
- Silt Box**
Refer to Engineer's Drawings
- Slot Drain**
Refer to Engineer's Drawings
- Manhole Cover**
Refer to Engineer's Drawings
- 43. Typical Pavement Build Up**
Refer to Engineer's Drawings
- 45. SUDS Build Up**
Refer to Engineer's Drawings

Rev	Date
D	24.11.15
E	27.11.15
F	01.12.15

Notes:
- Dimensions are shown indicatively and will need to be surveyed on site by the Contractor.
- LBM accept that this proposal is indicative and the design team have not had the benefit of detailed services information such as a radar survey or borehole information that may have an impact on the design.

Do not scale off this drawing. Any discrepancies or queries should be brought to the attention of the authors. Gort Scott Ltd retain copyright of these drawings and the work depicted on them. No unauthorised reproduction of work.

This drawing is for the purposes declared in the Status Box only. Whilst all reasonable efforts are used to ensure drawings are accurate, Gort Scott Ltd accept no responsibility or liability for any reliance on these drawings for purposes other than those stated.



STATUS:
INFORMATION

GORT SCOTT The Print House, 18 Ashwin Street, London E8 3DL UK
E: info@gortscott.com T: +44(20) 7254 6294

PROJECT:	Connecting Colliers Wood
TITLE:	Proposed Plan Site A - Baltic Close
DRAWING:	CCW/P/02-12
SCALE:	1:100 @A3
DATE:	December 2015