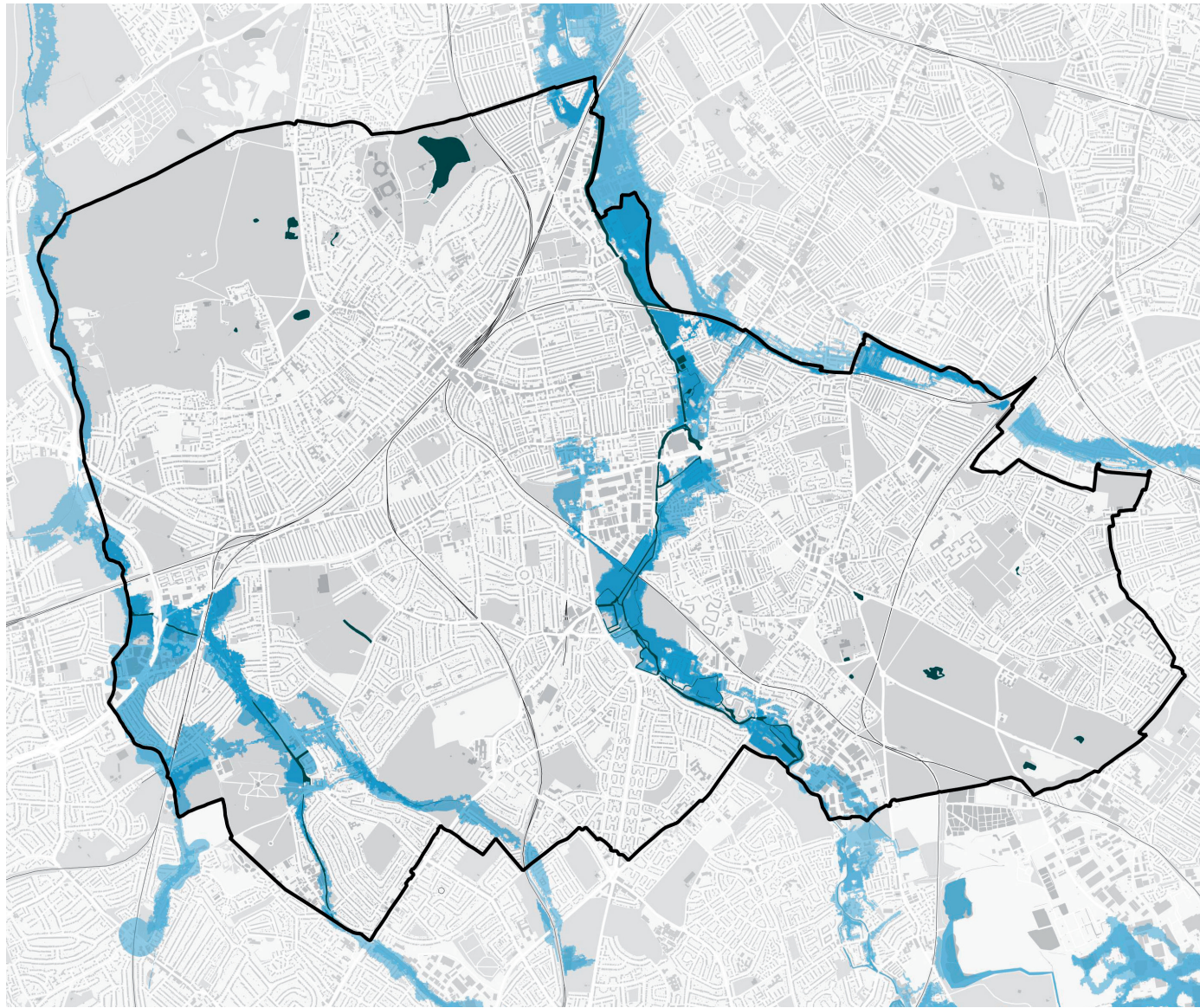




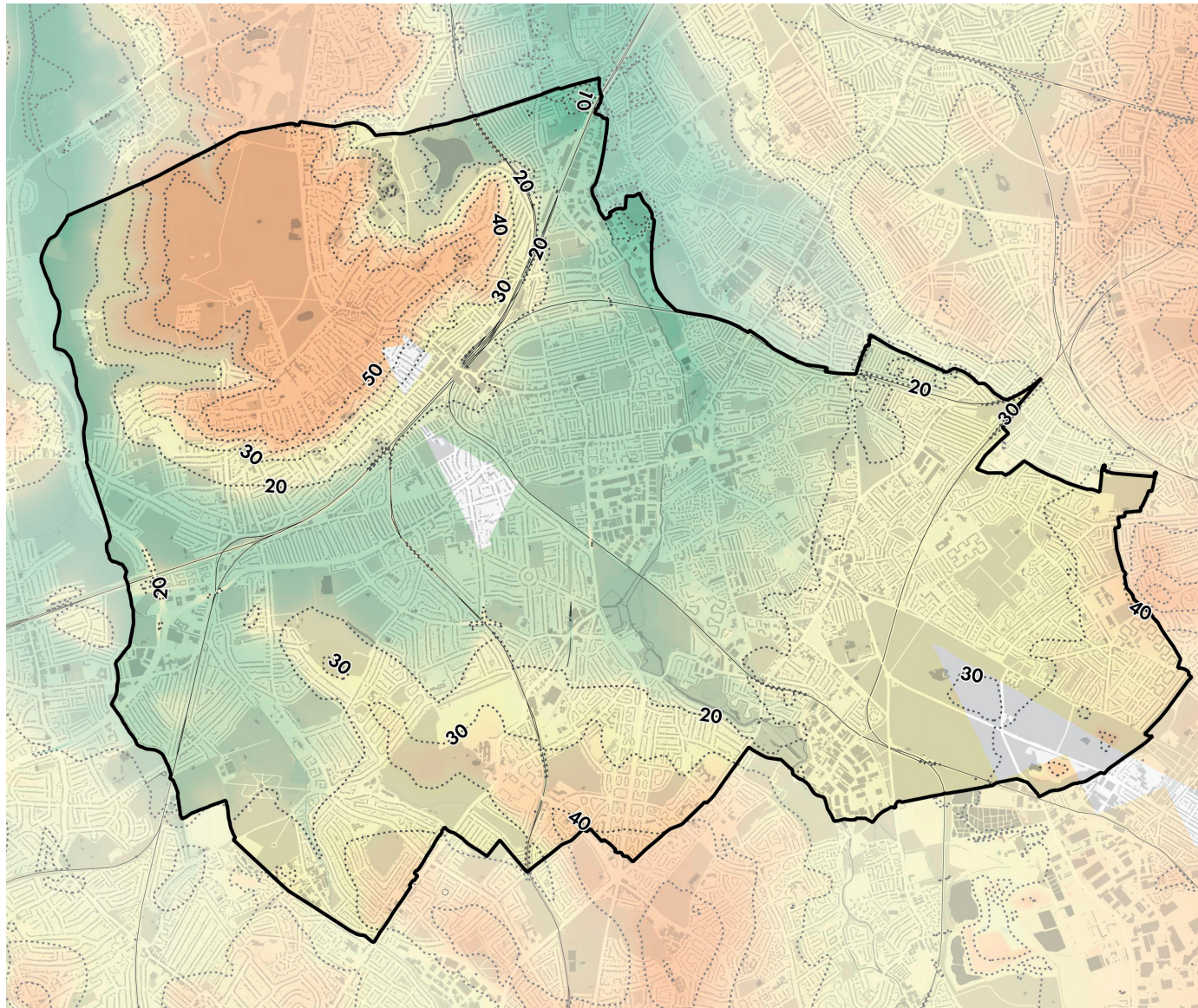
MERTON

Character Study Appendix

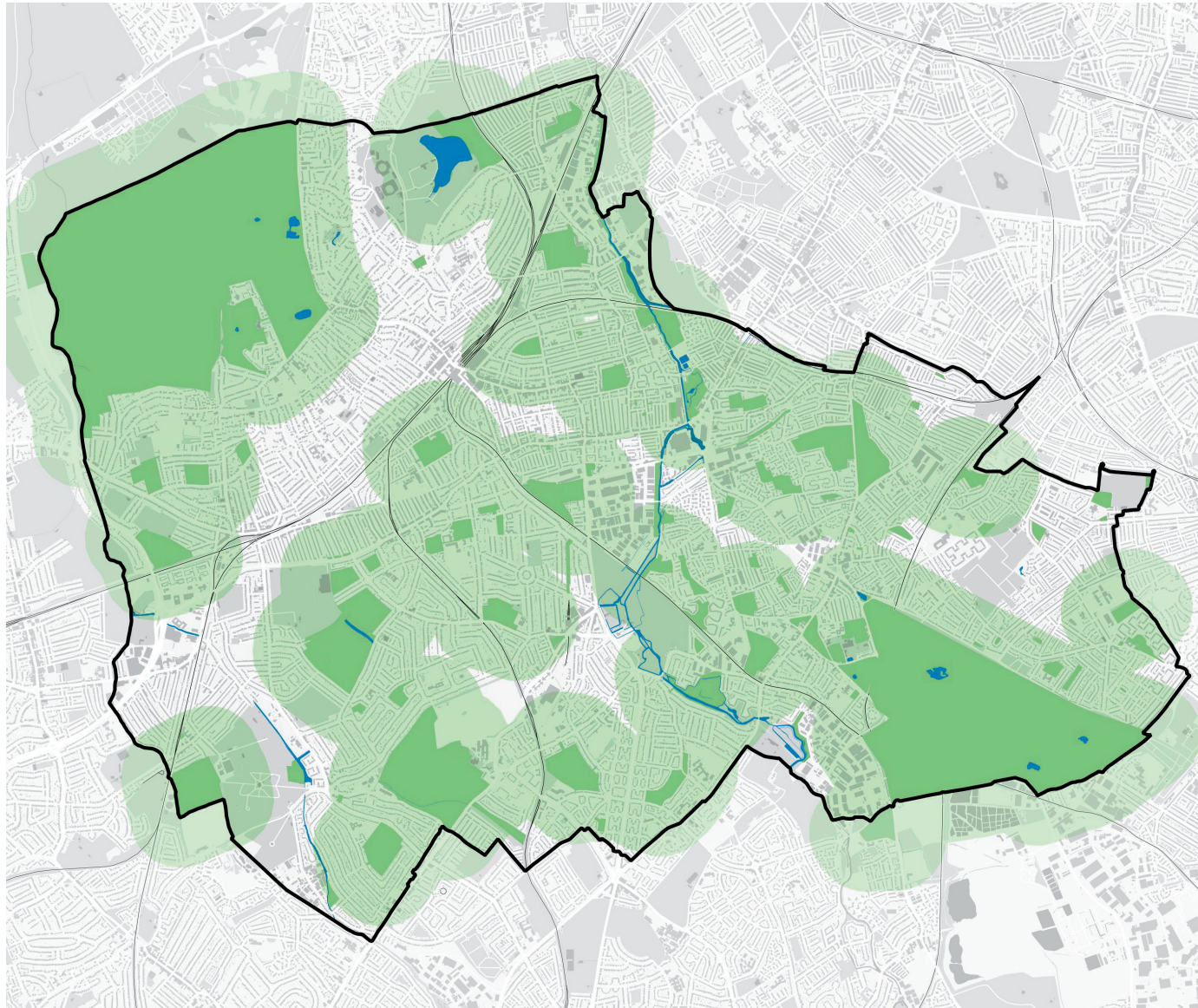
Document of A4 plans



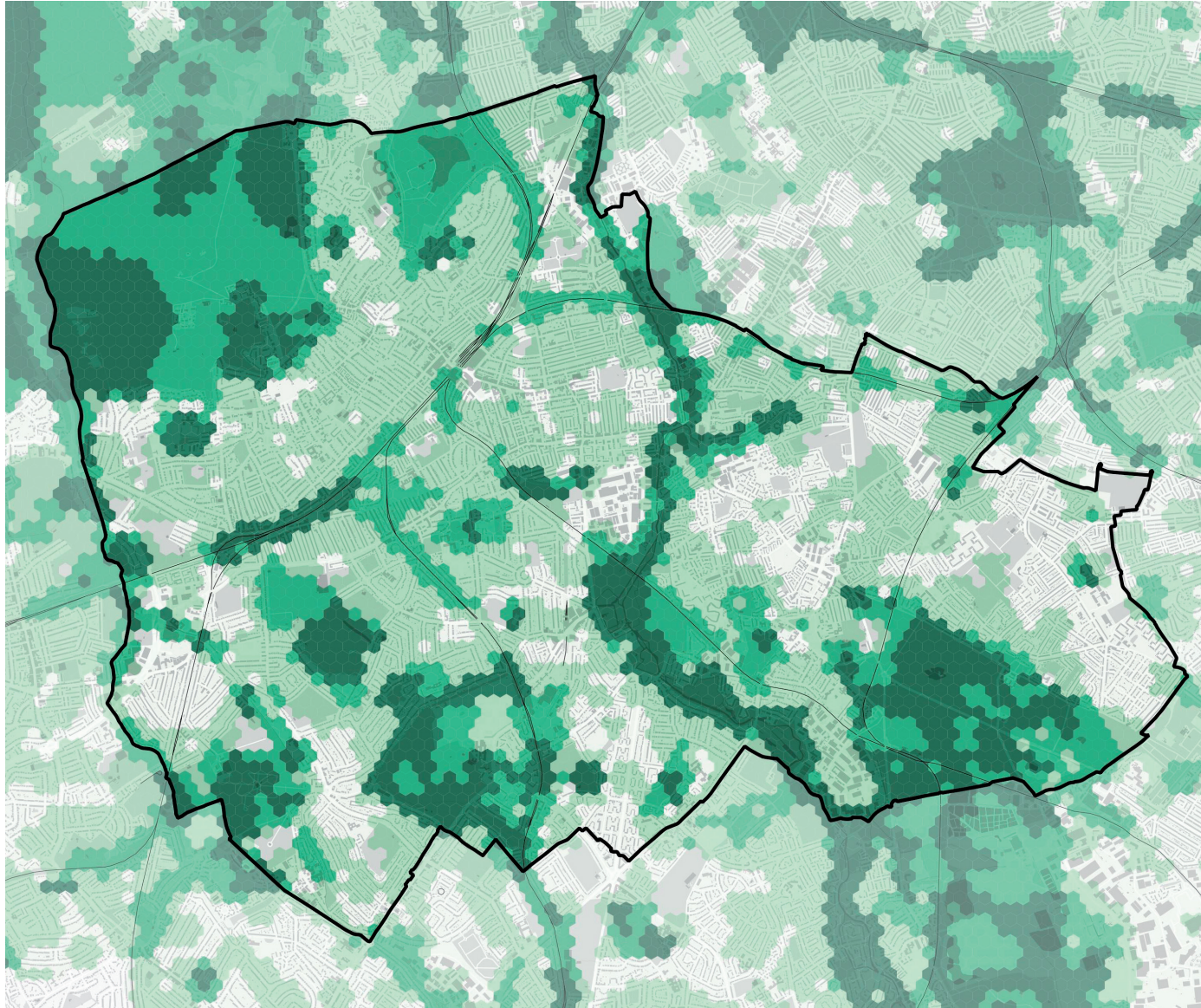
Merton's blue infrastructure - the Wandle and Beverley Brook



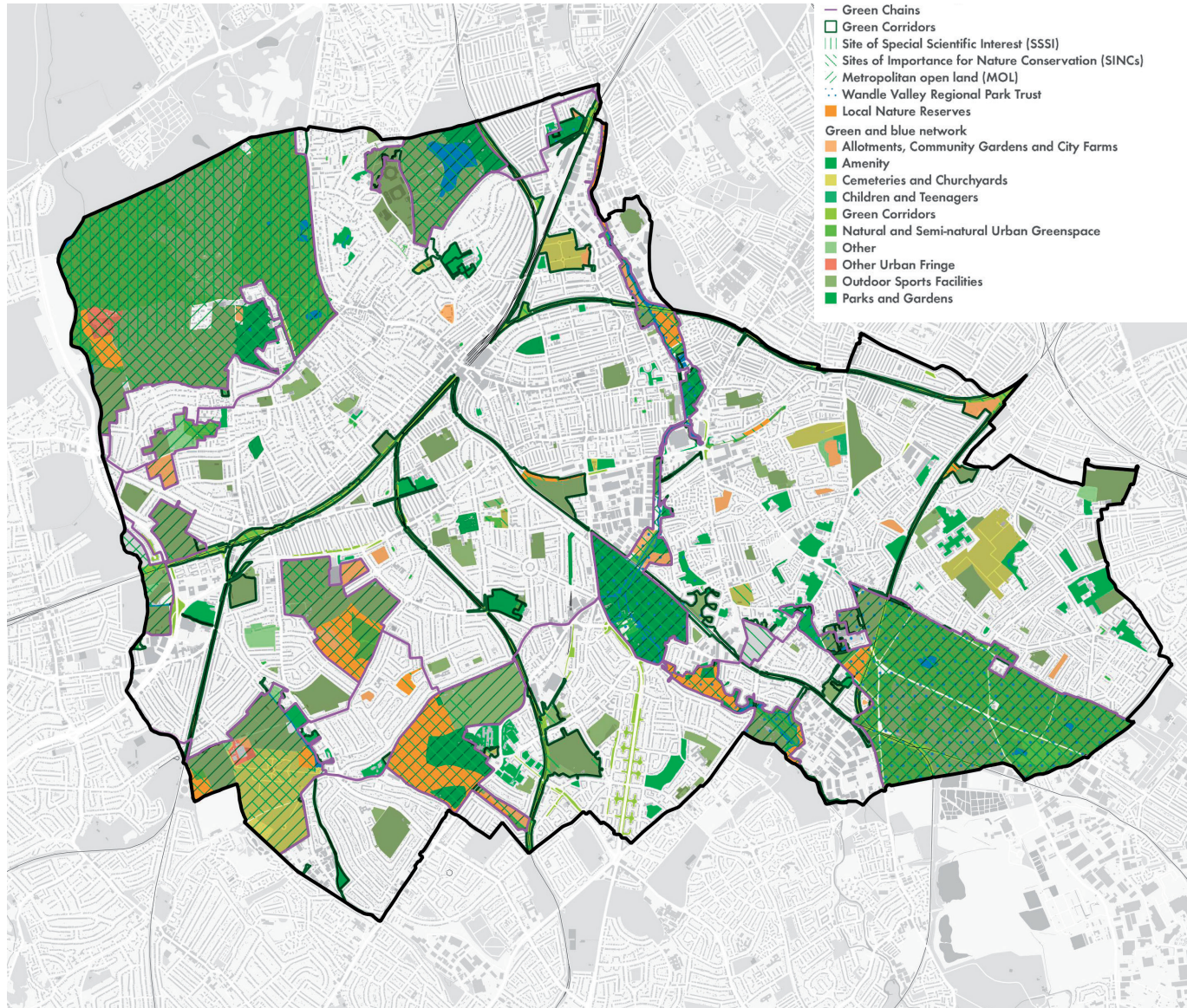
The borough's topography illustrating the distinctive hill at Wimbledon



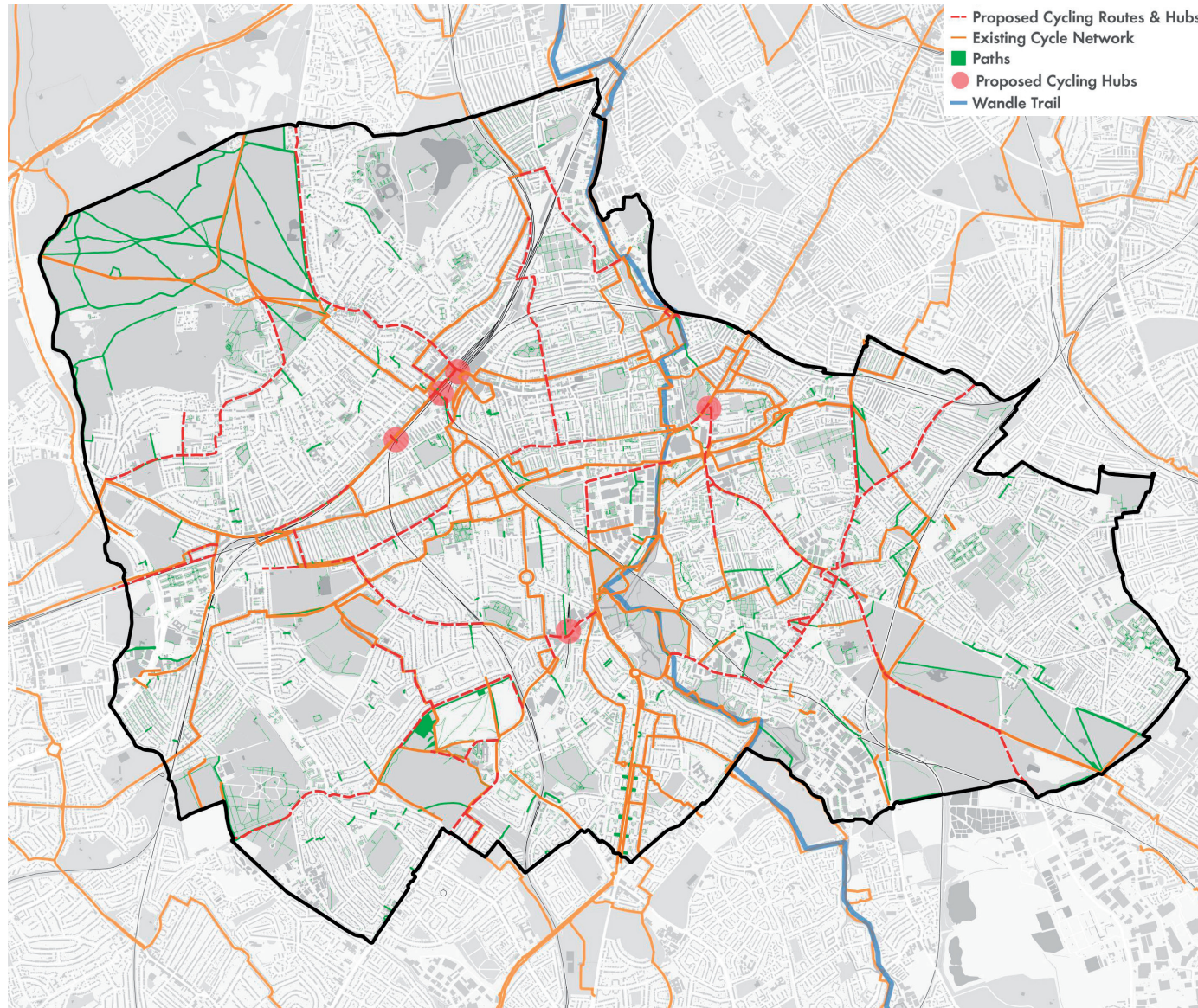
There are many ways of mapping open space deficiency - here we see areas with no green shading that are not within a 5 minute walk of an open space



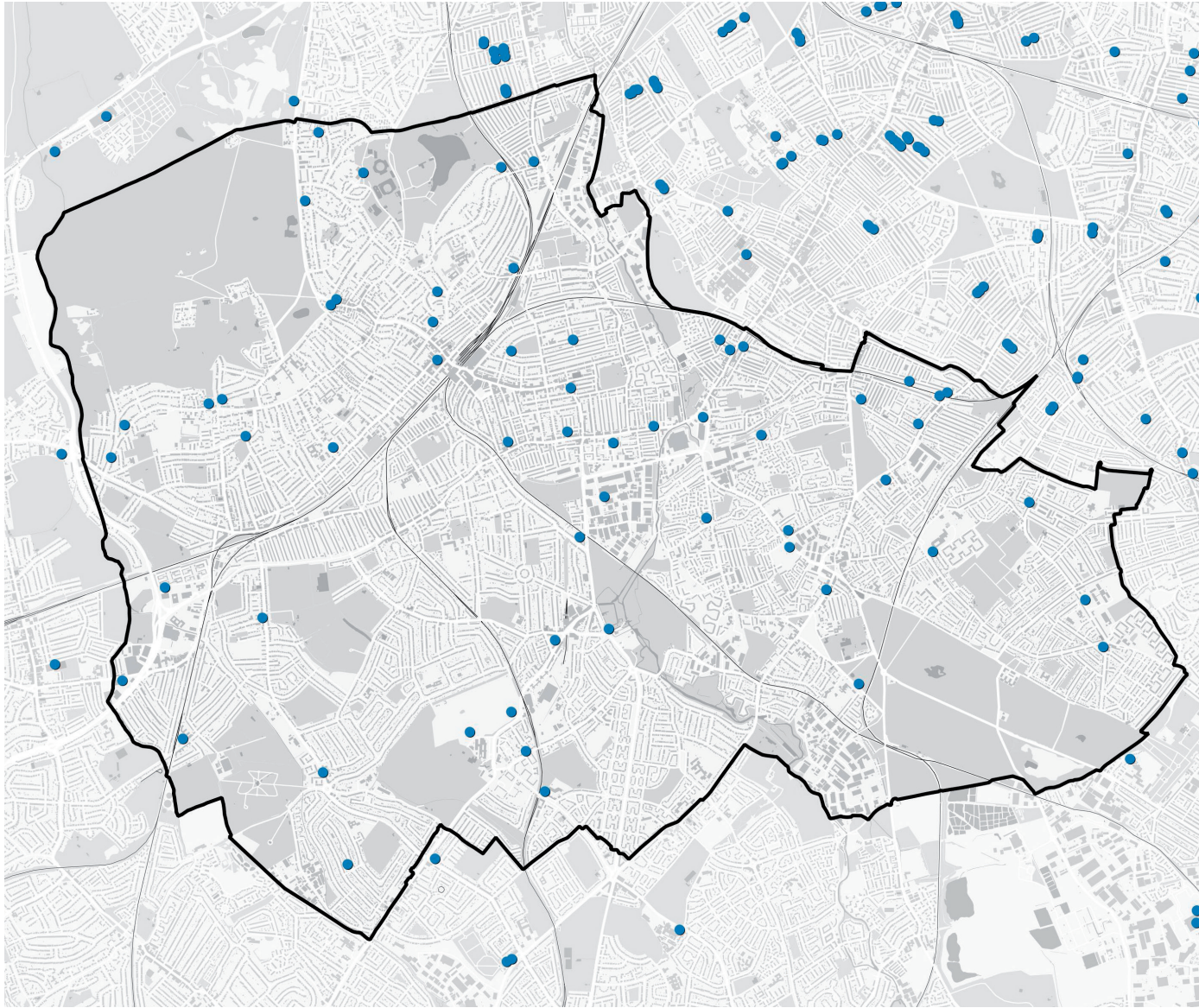
Biodiversity - tiles with a score of 0 indicate no know protected species, sites or habitats. Tiles with a score of 3 indicate all 3 categories.



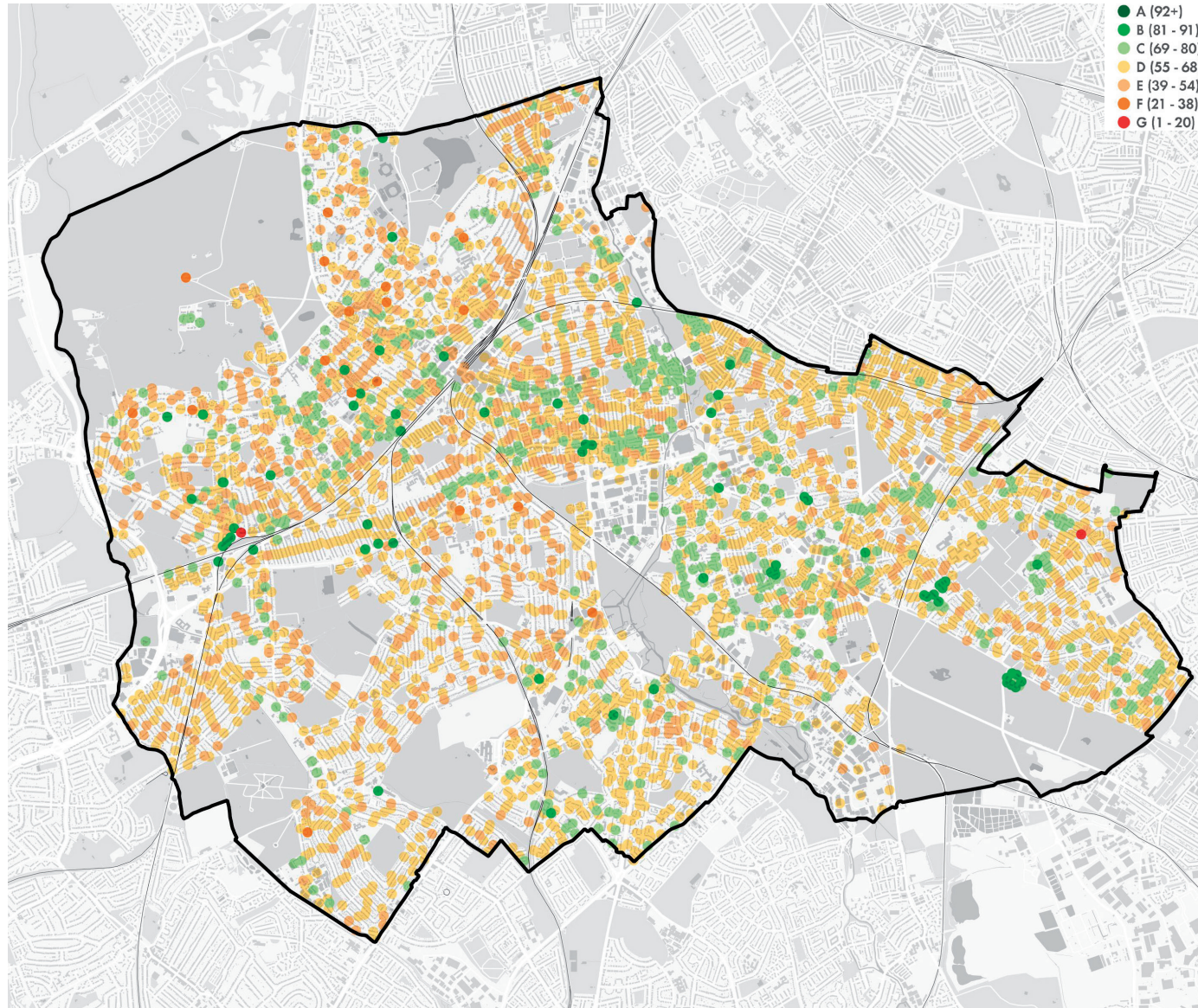
The borough's network of green and blue assets including type and policy designations



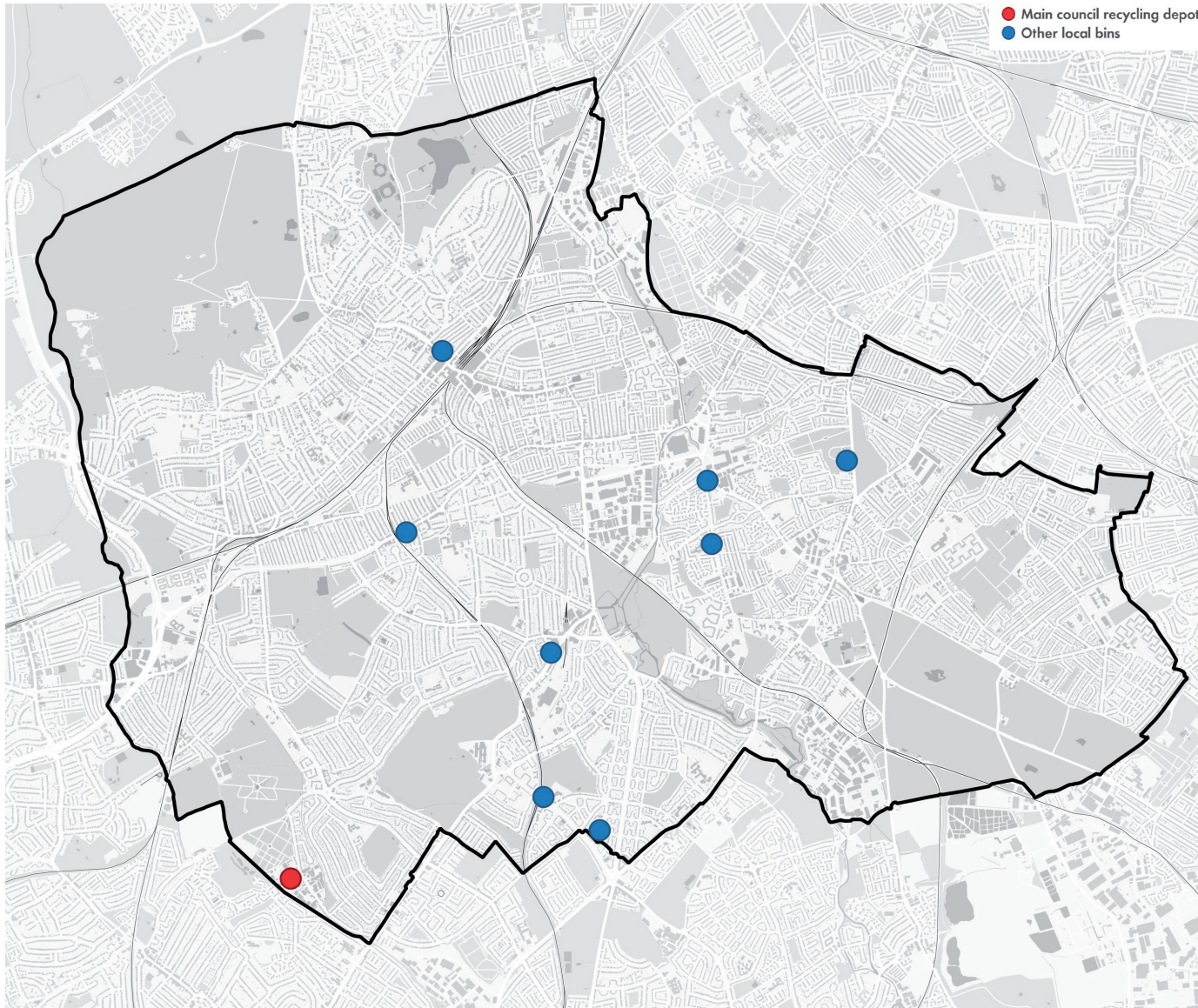
Active travel network with proposed improvements



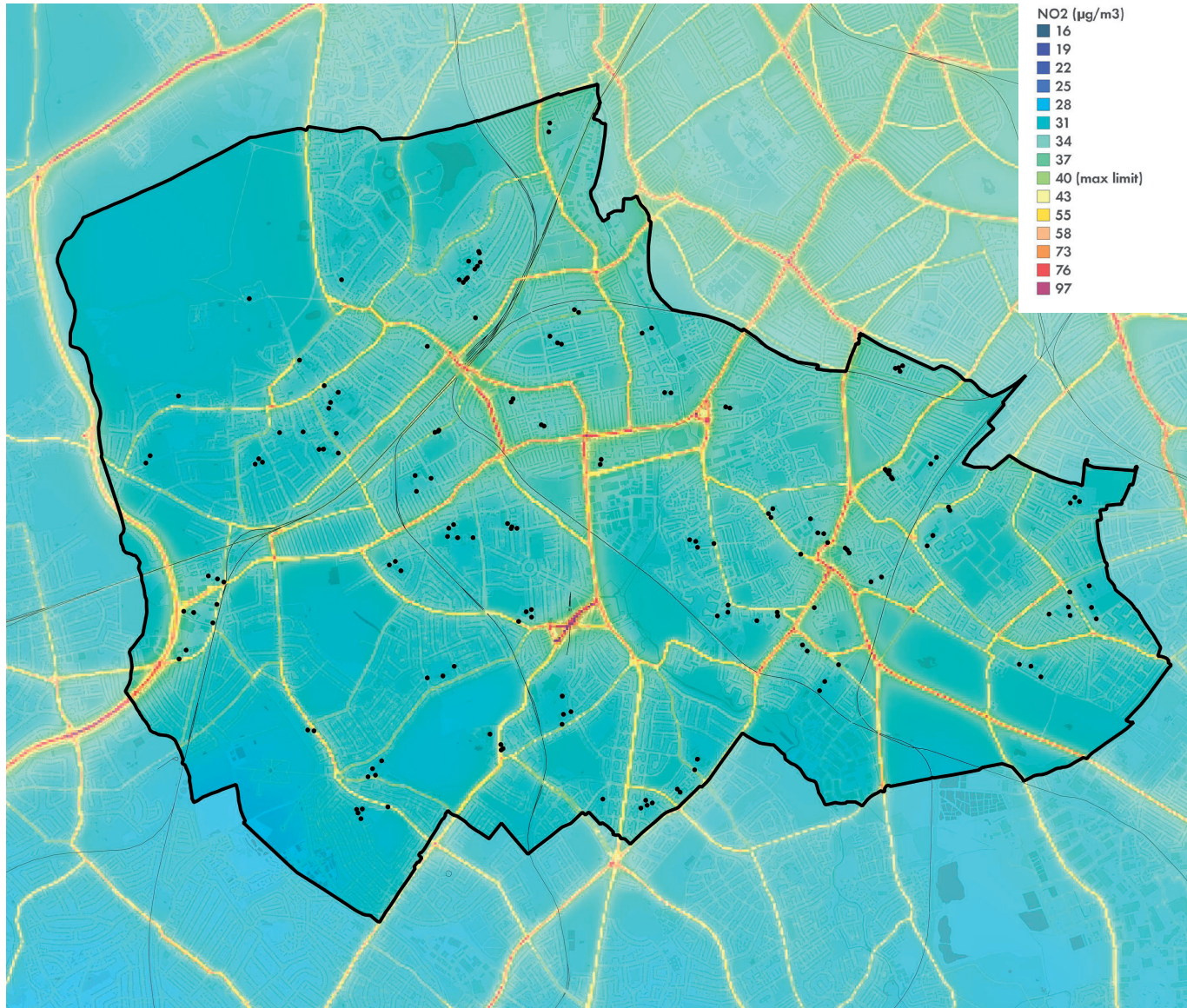
Location of EV charging points



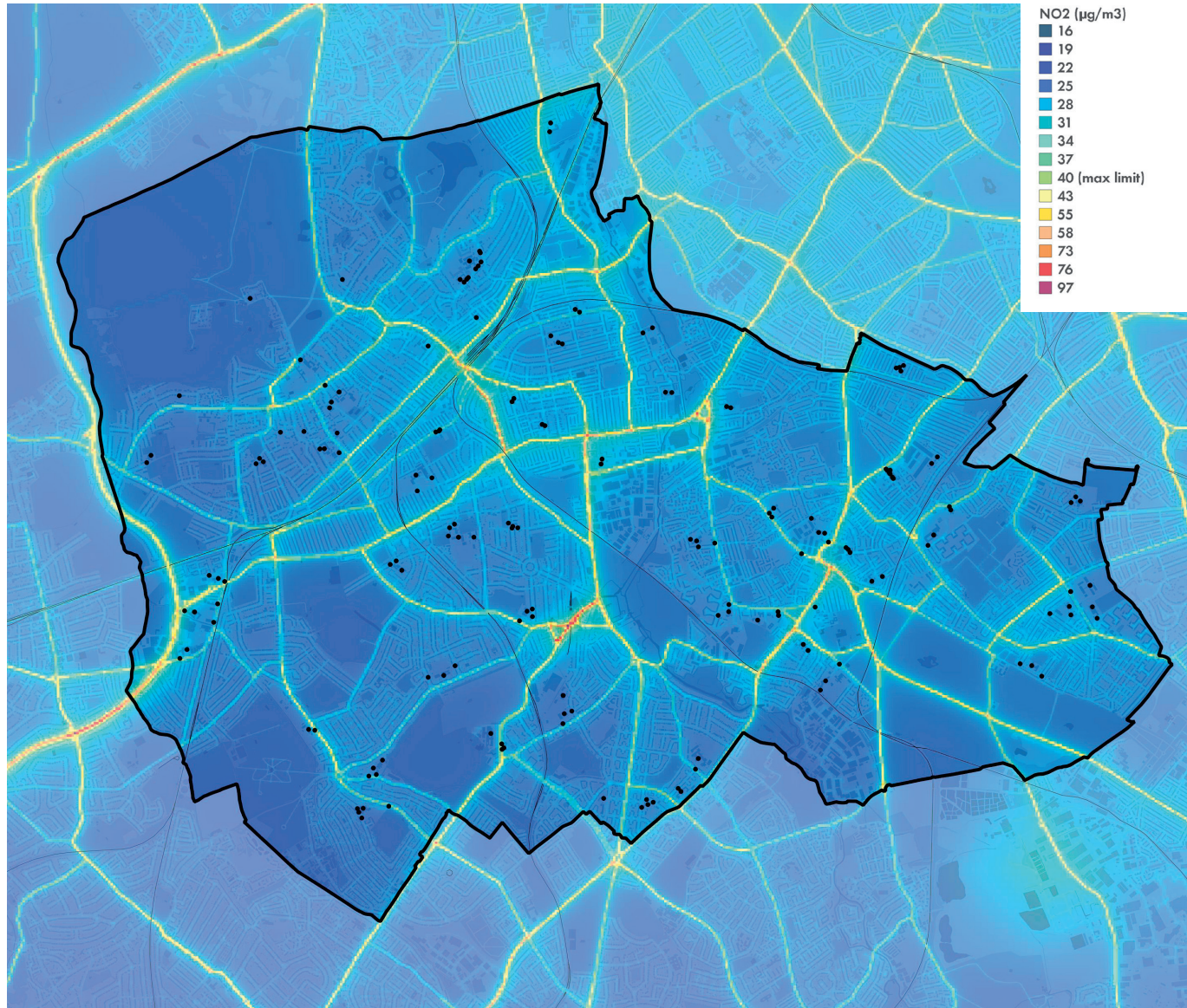
EPC ratings - energy performance of buildings - postcode average



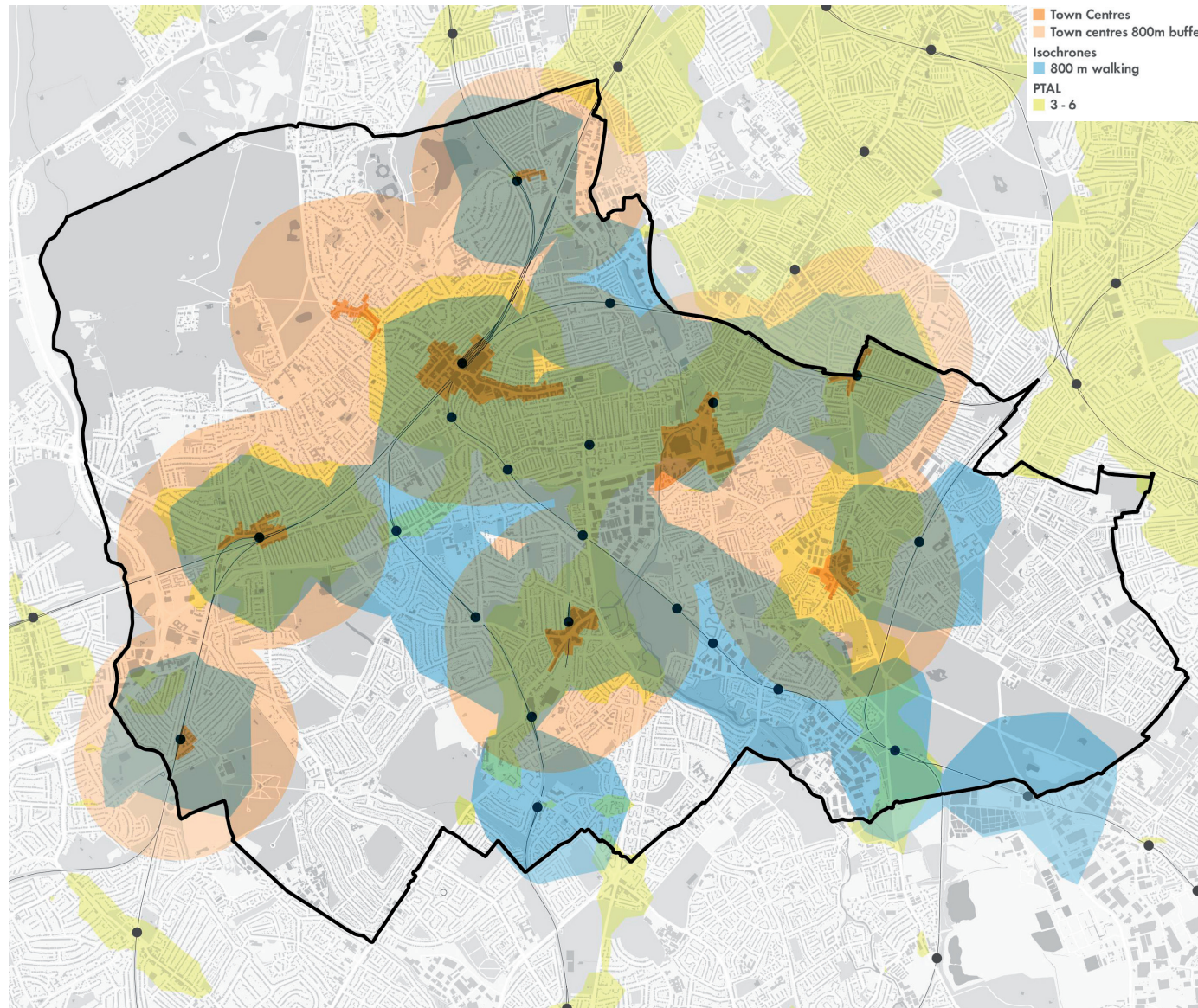
Locations of recycling and waste facilities



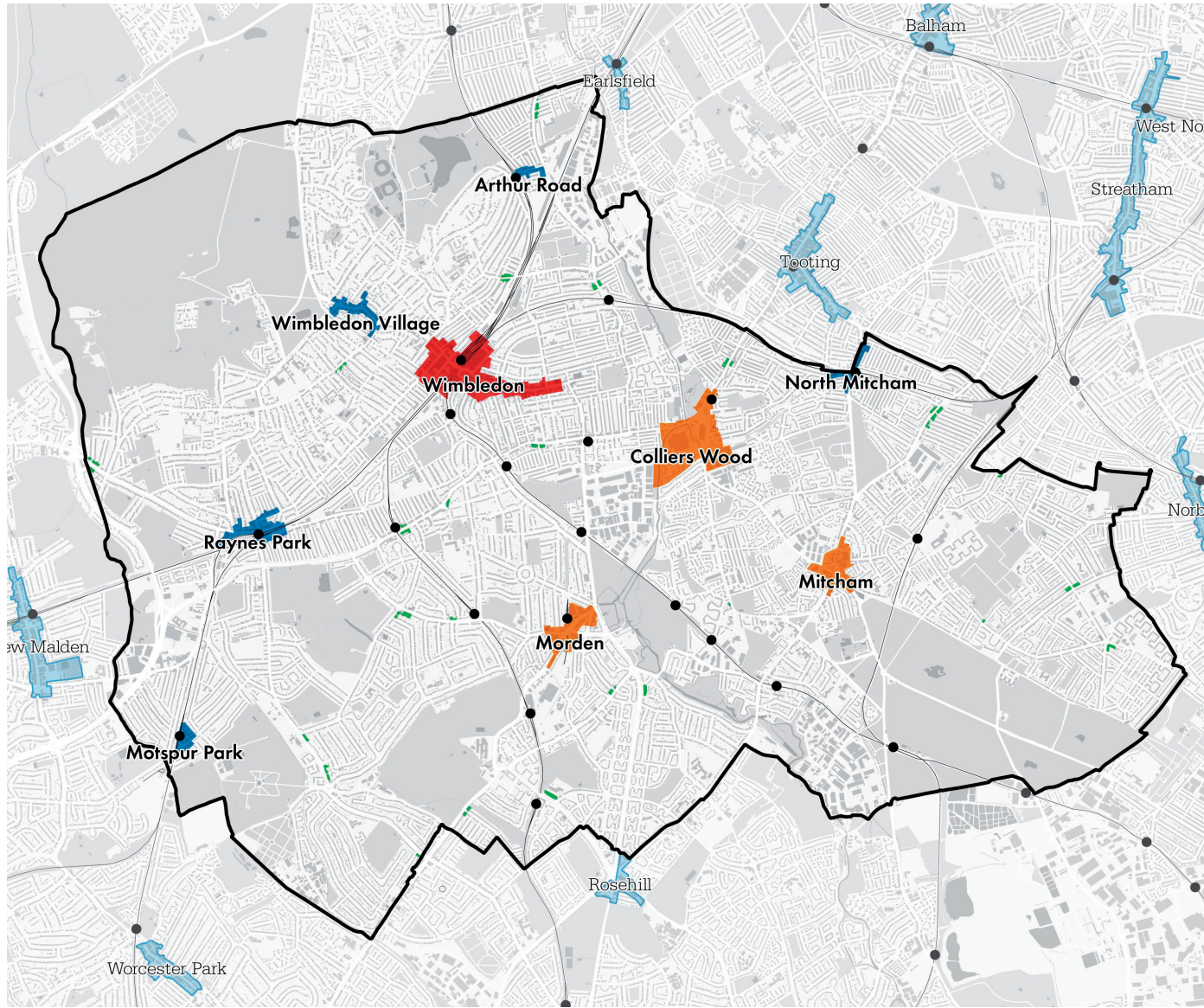
Air Quality, 2013



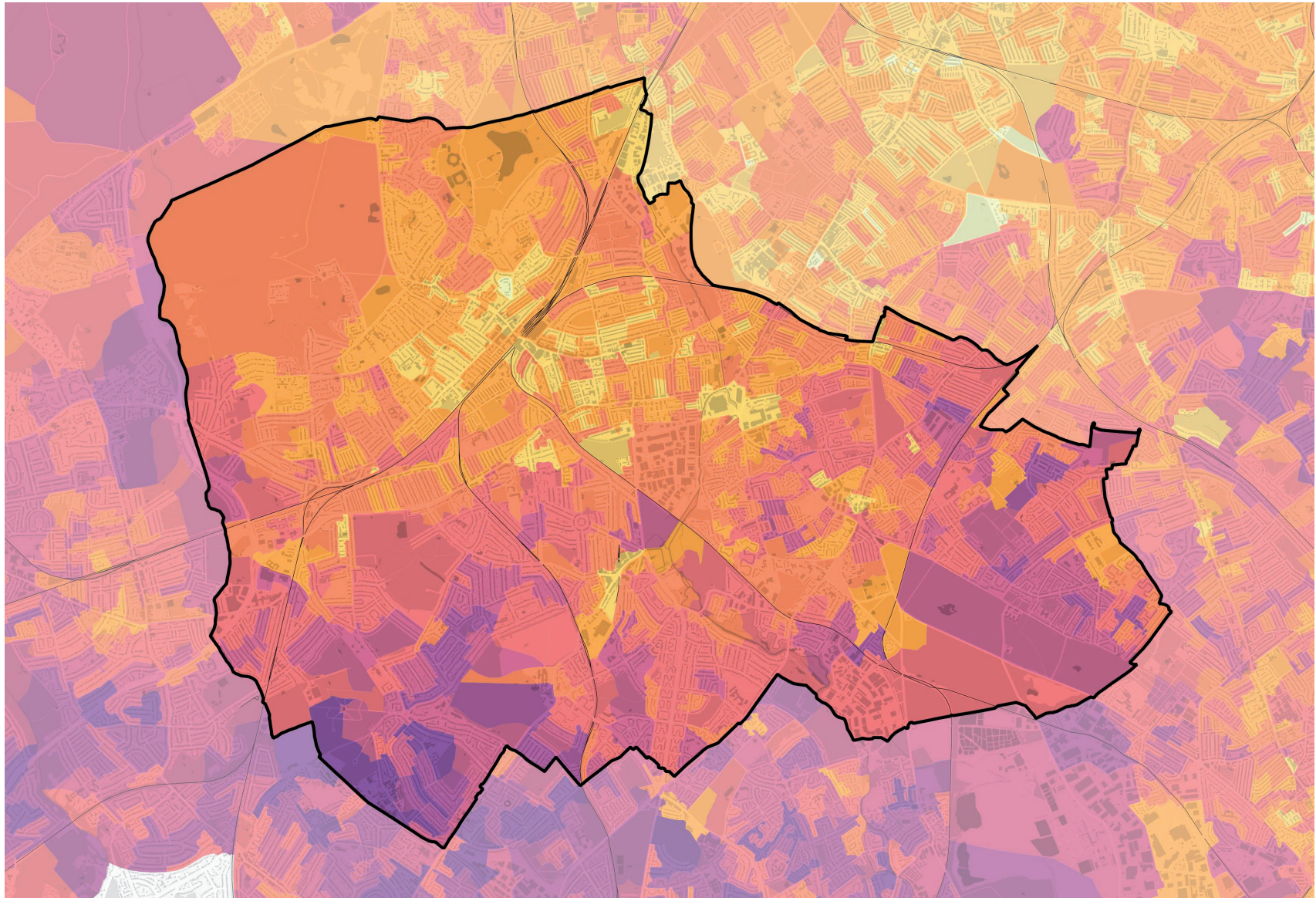
Air Quality, 2020 projection



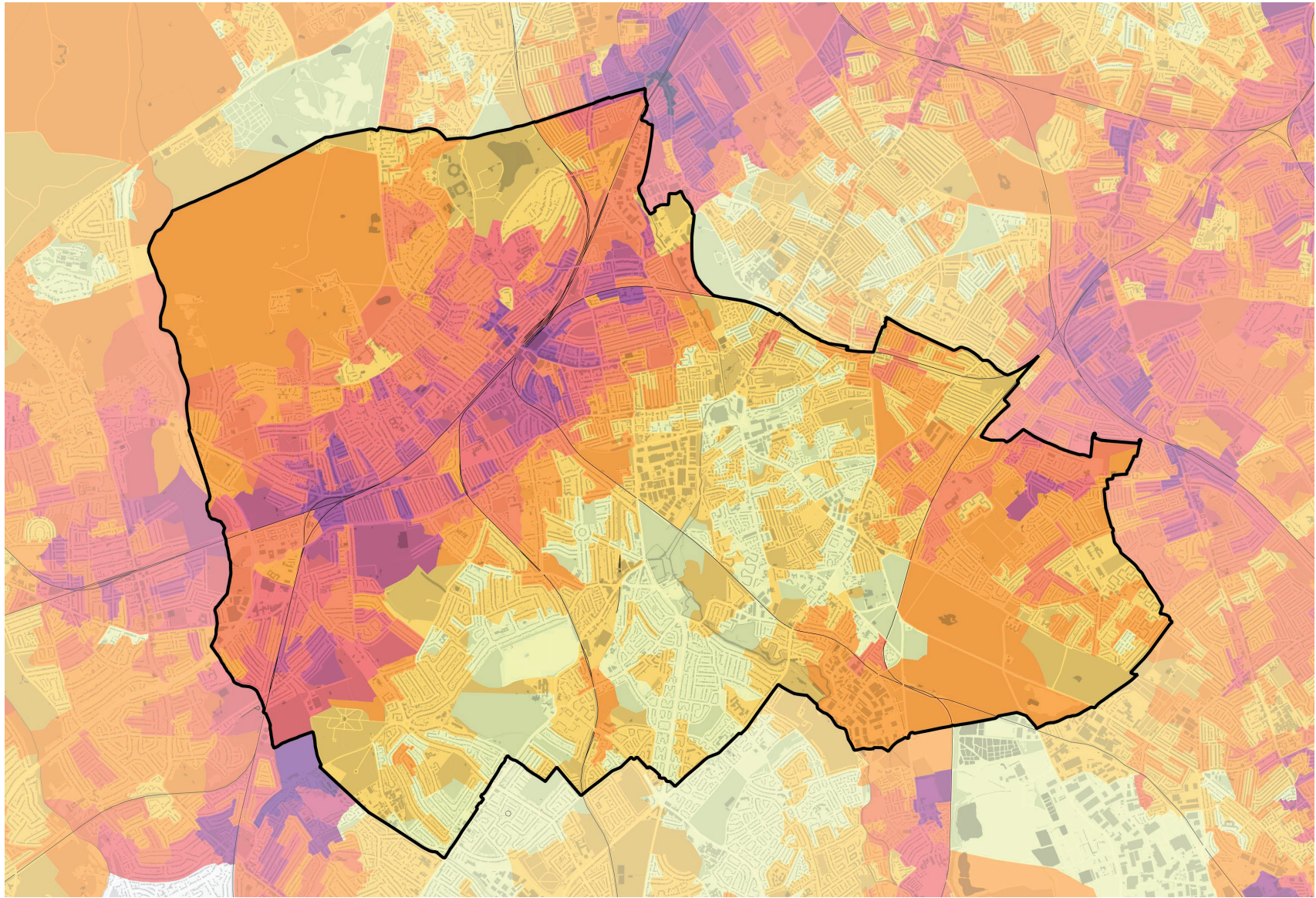
Accessibility to services and transport



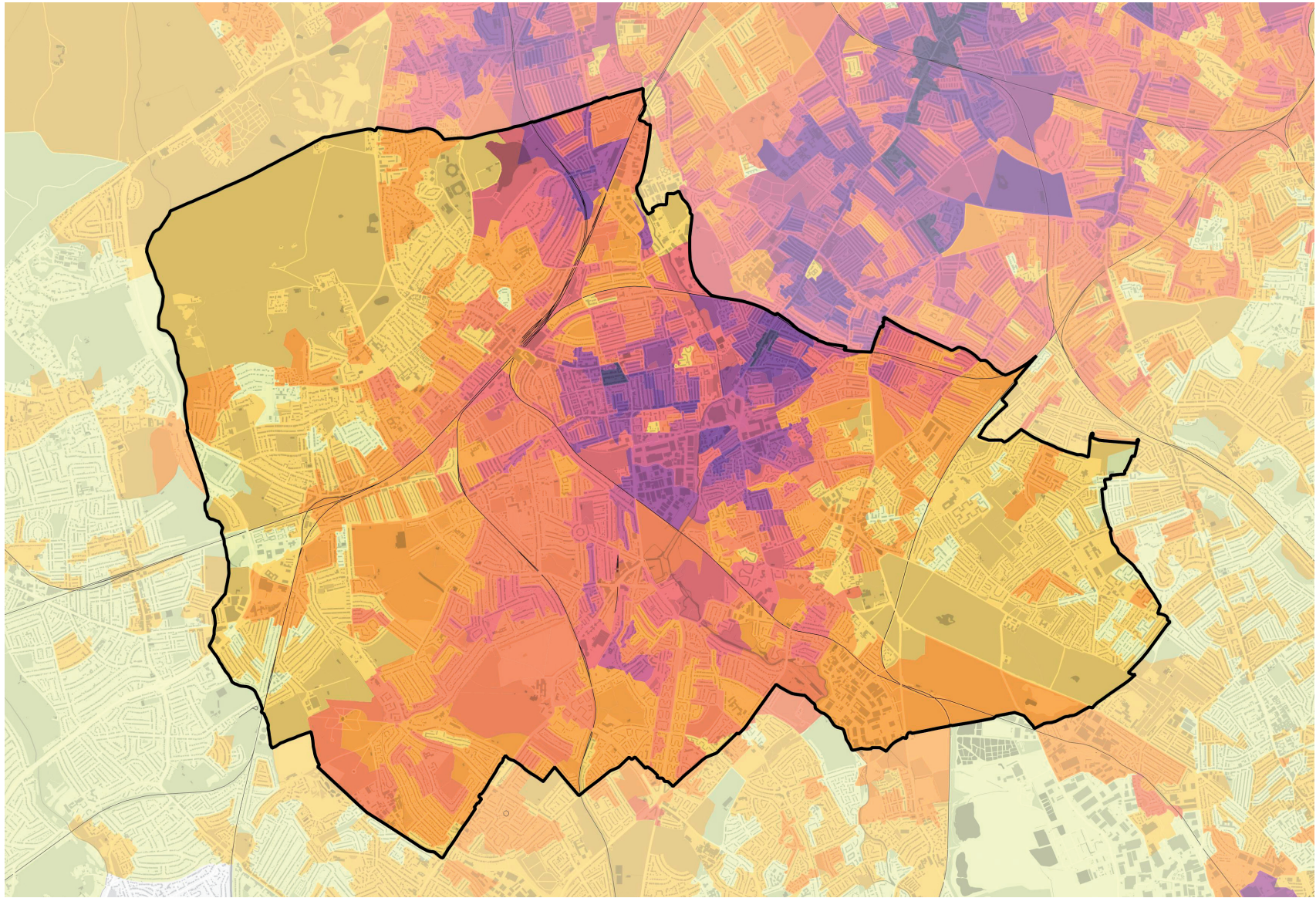
Town centre hierarchy



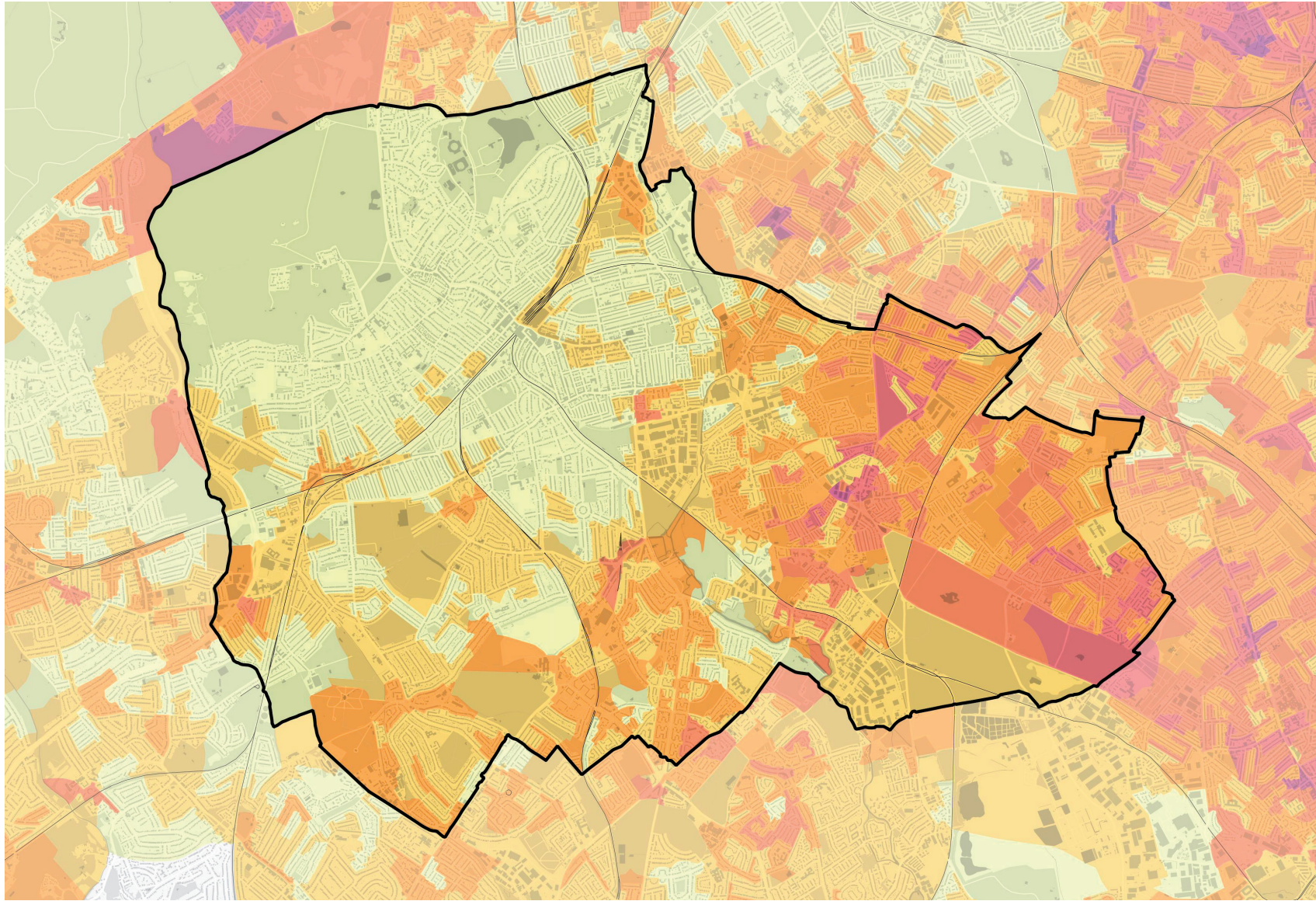
Method of travel to work: car / van



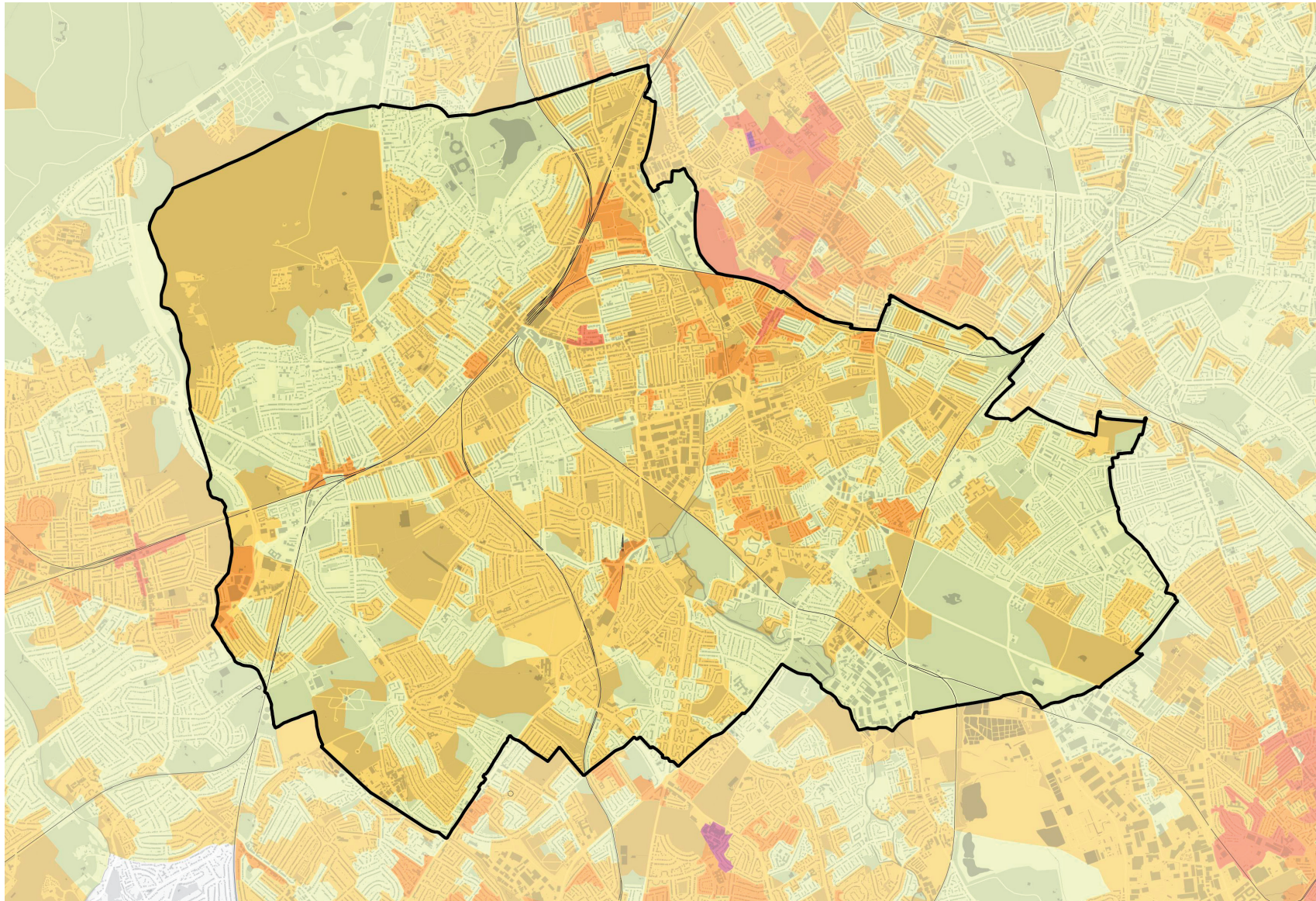
Method of travel to work: train



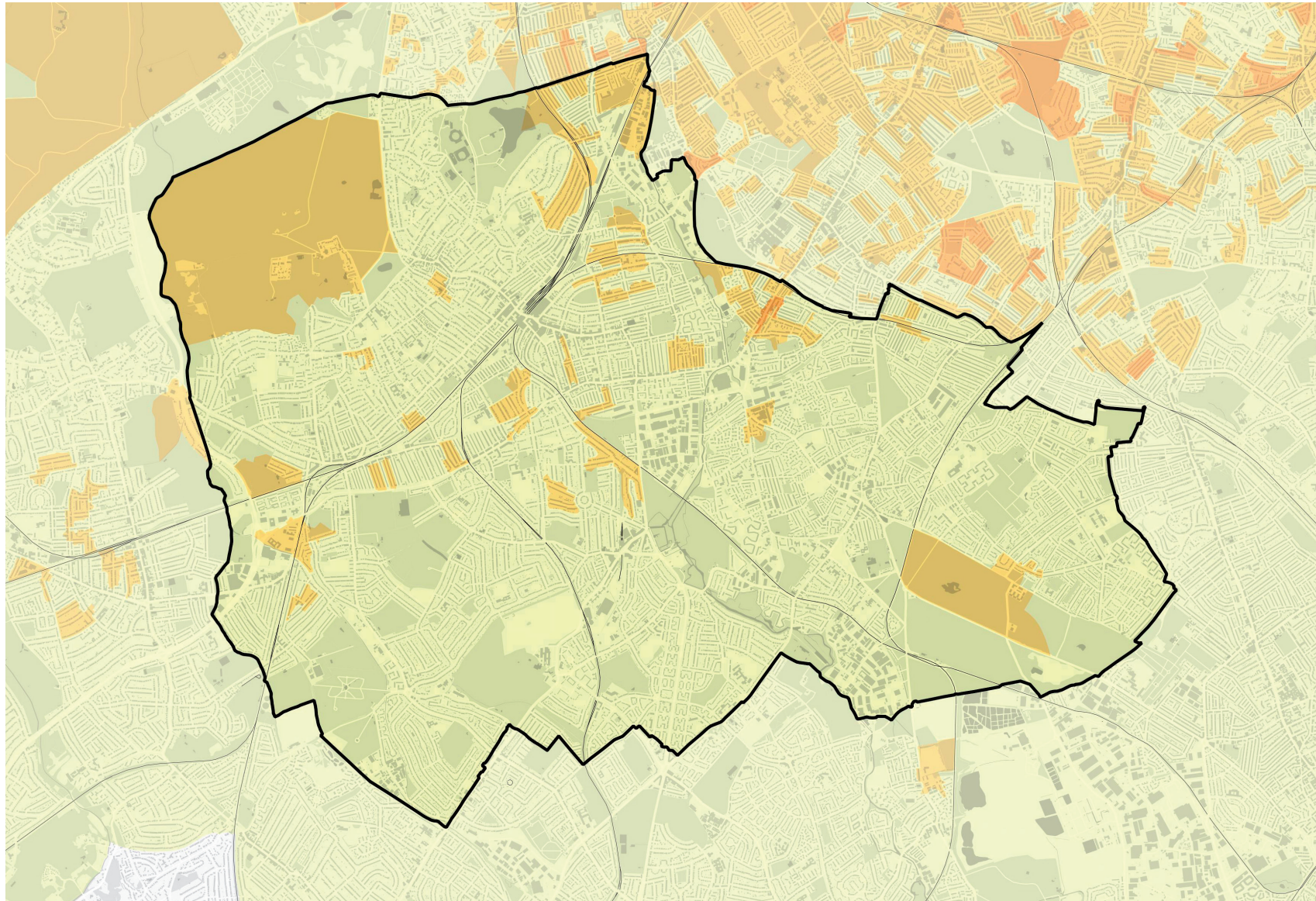
Method of travel to work: underground



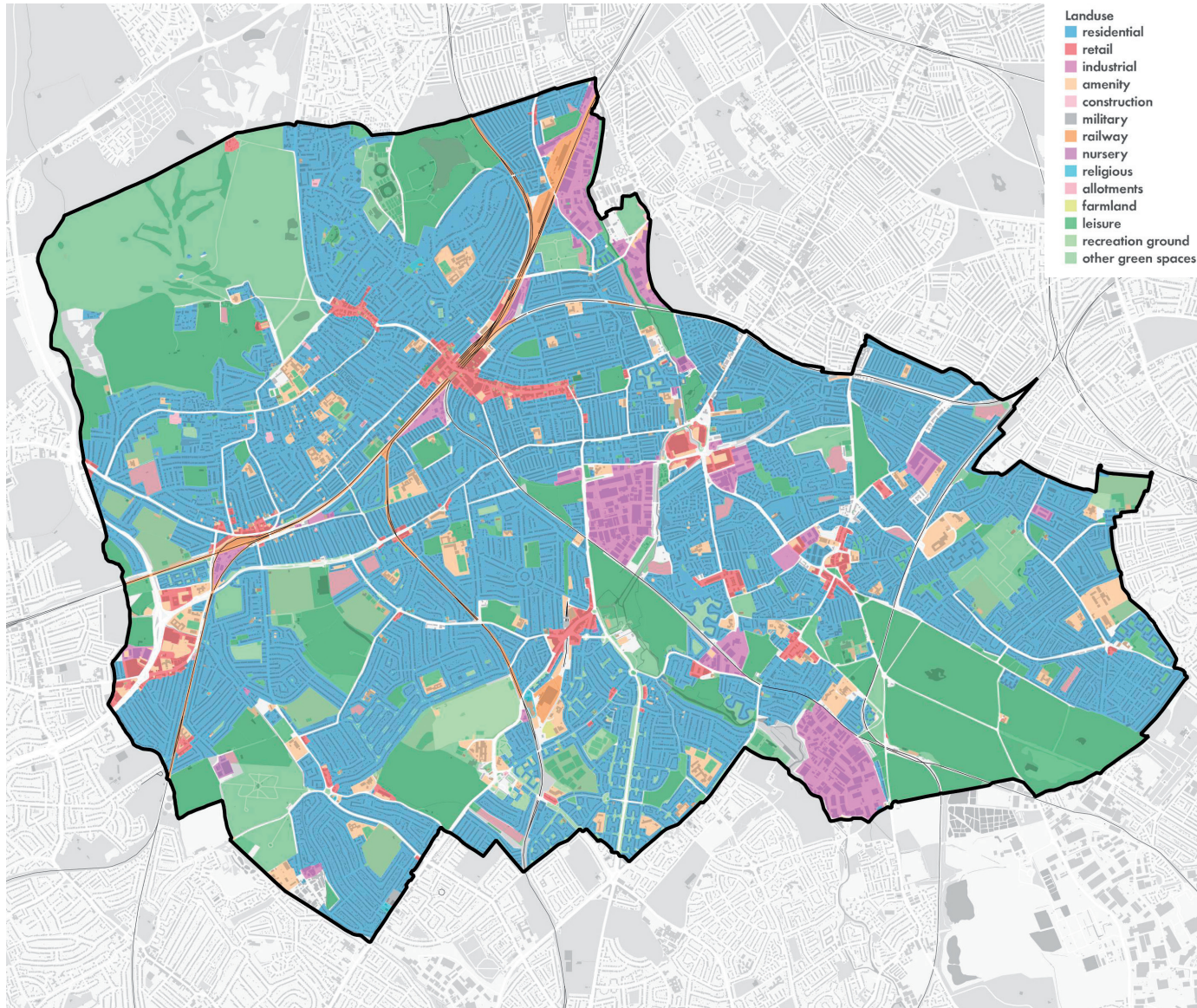
Method of travel to work: bus



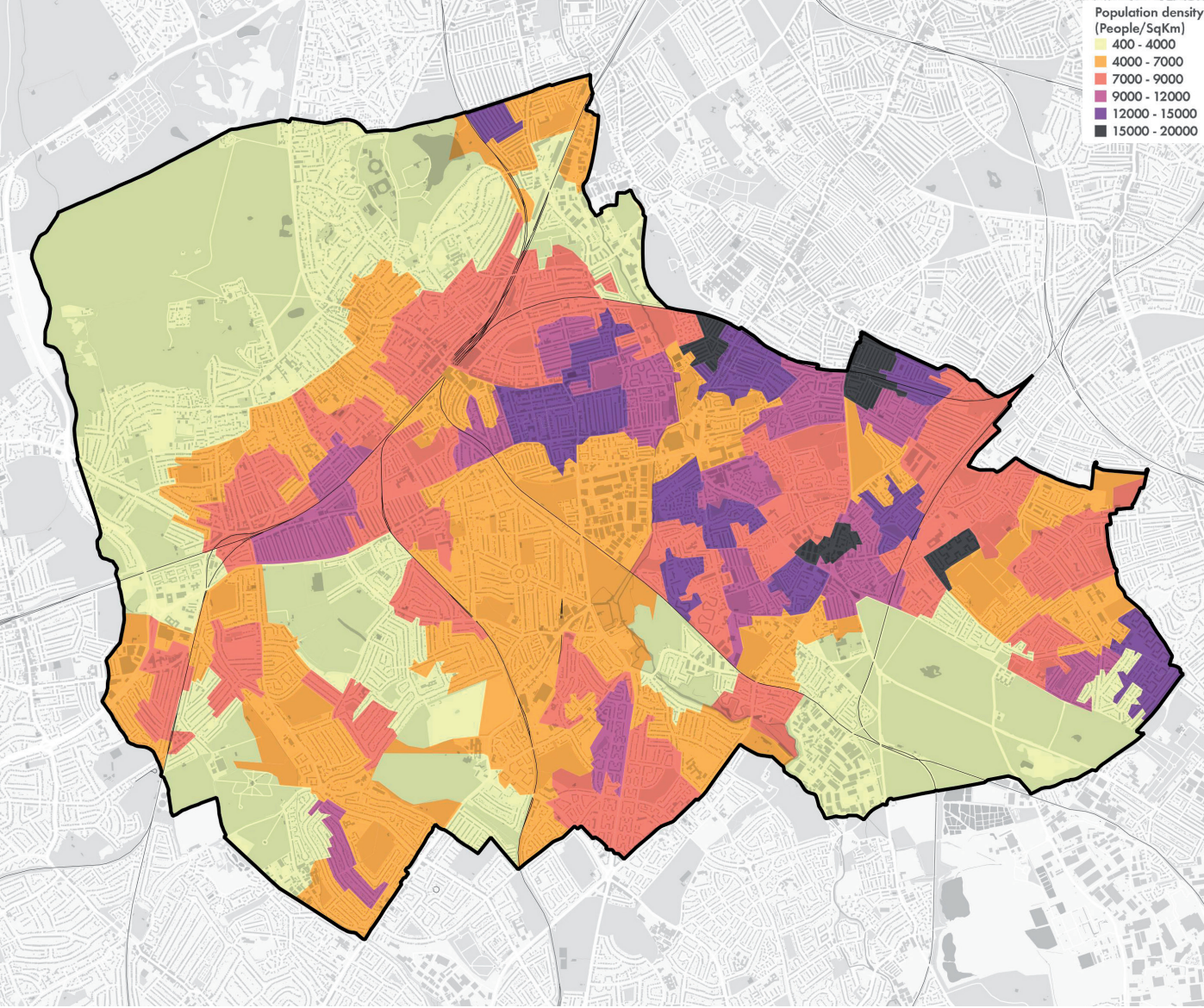
Method of travel to work: on foot



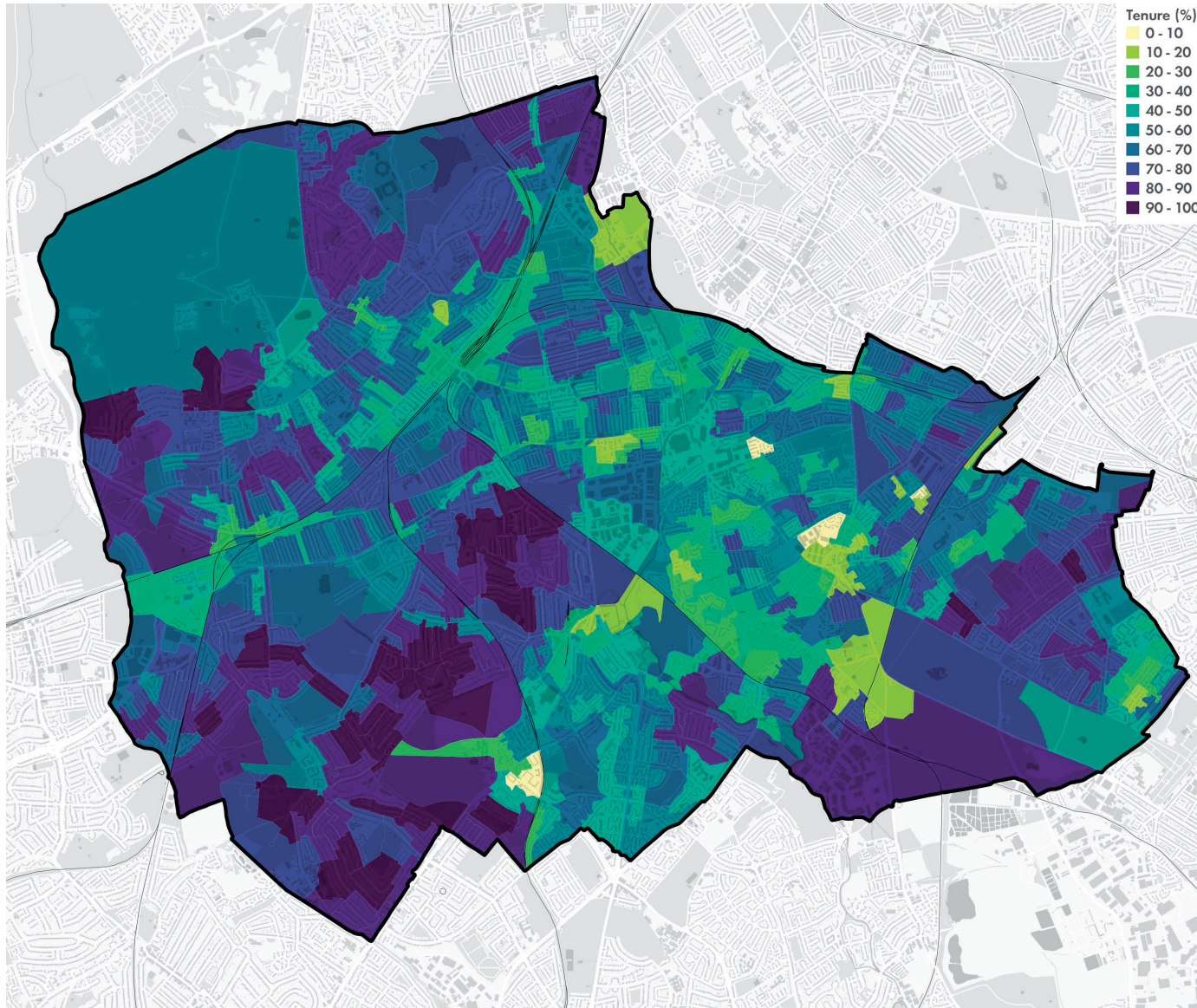
Method of travel to work: by bike



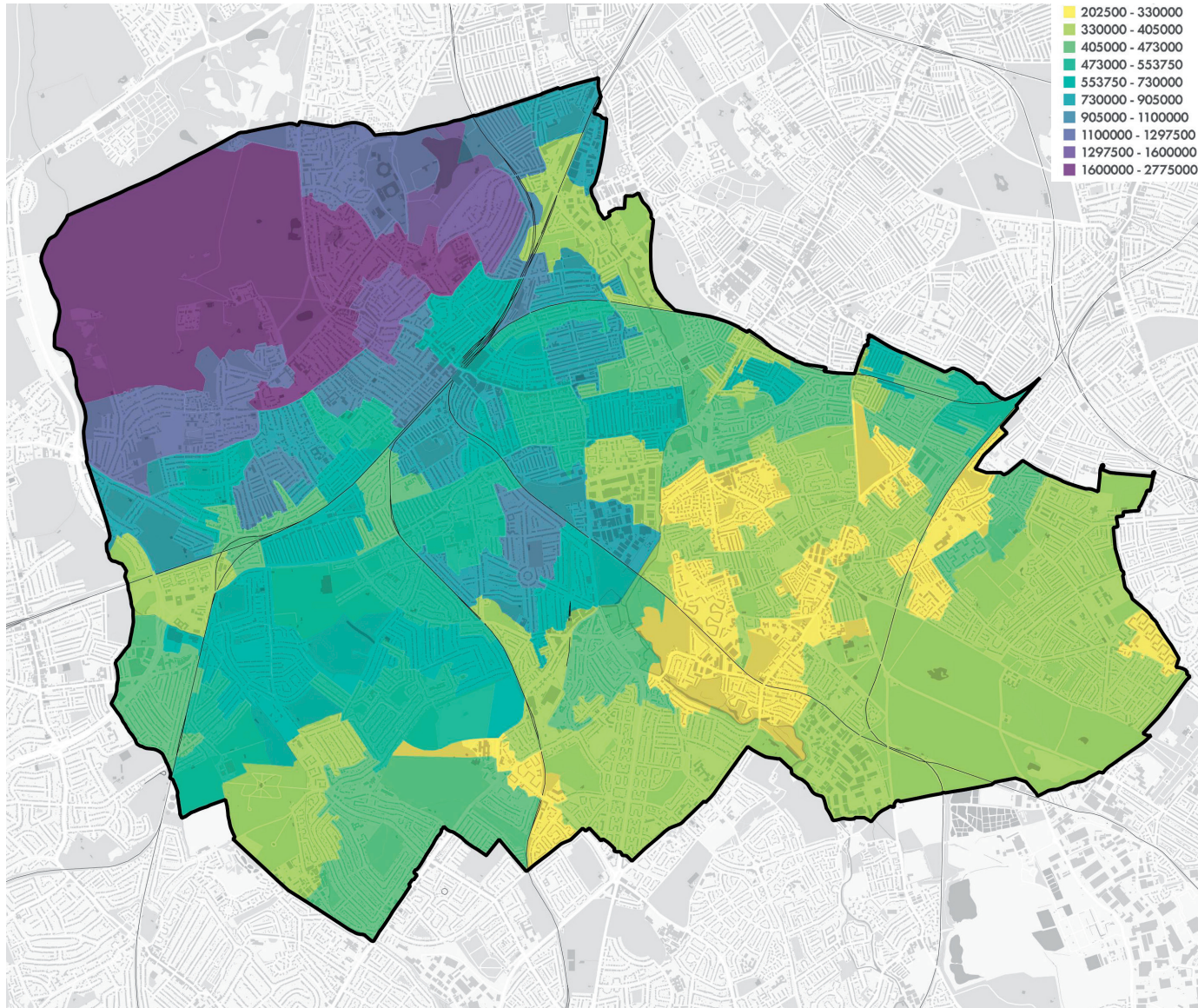
Indicative land use plan



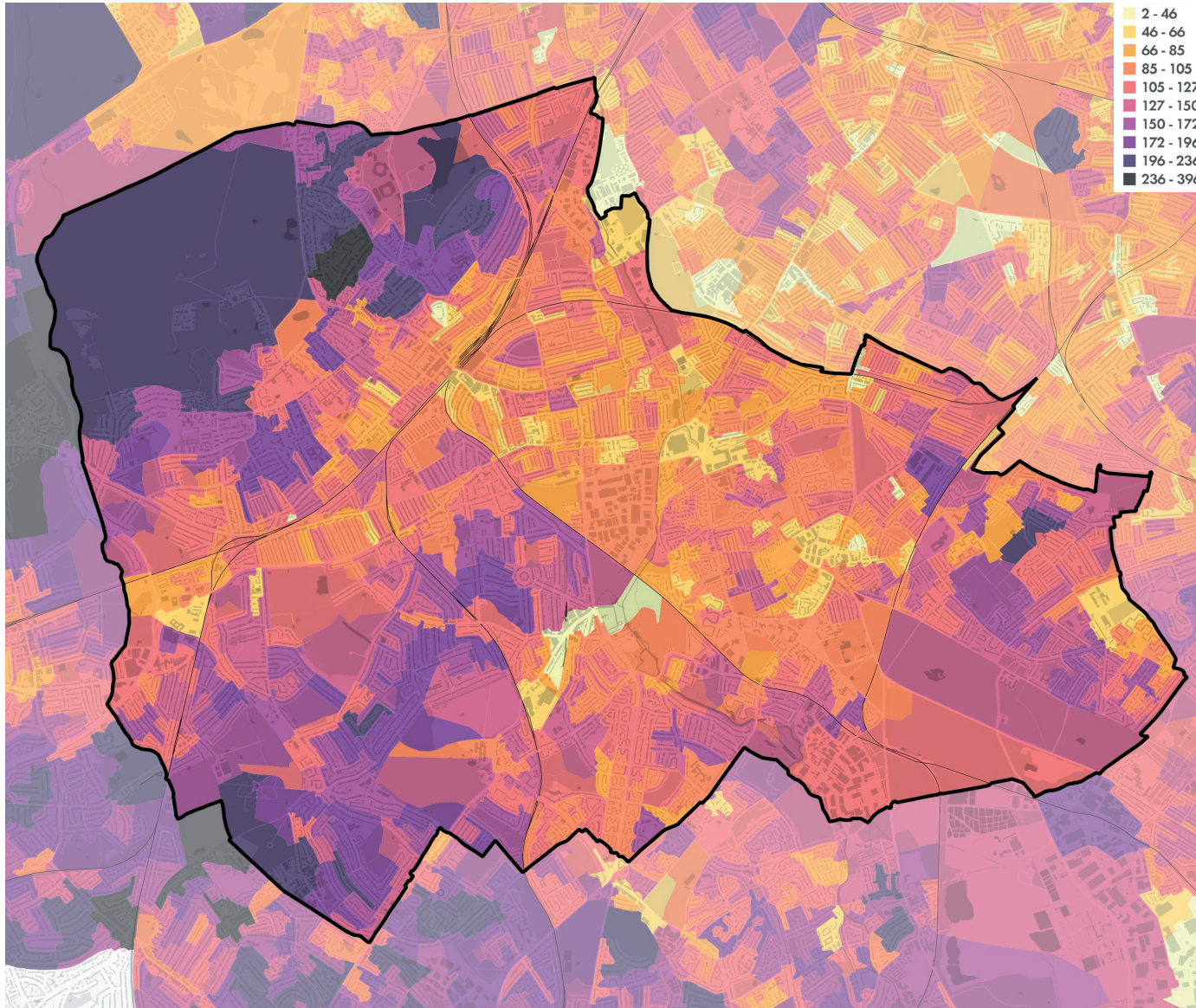
Population density



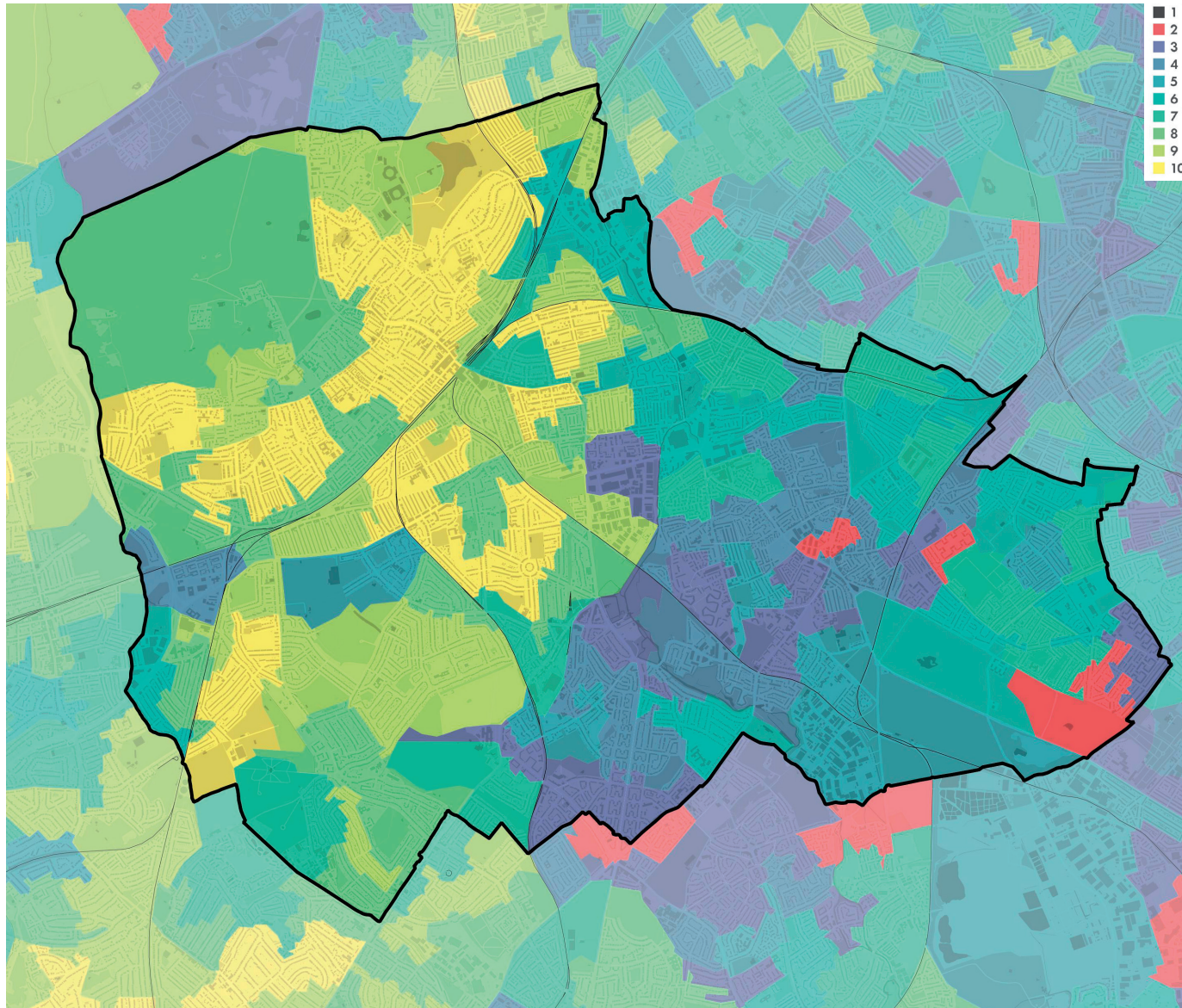
Property ownership - map showing those that own their home



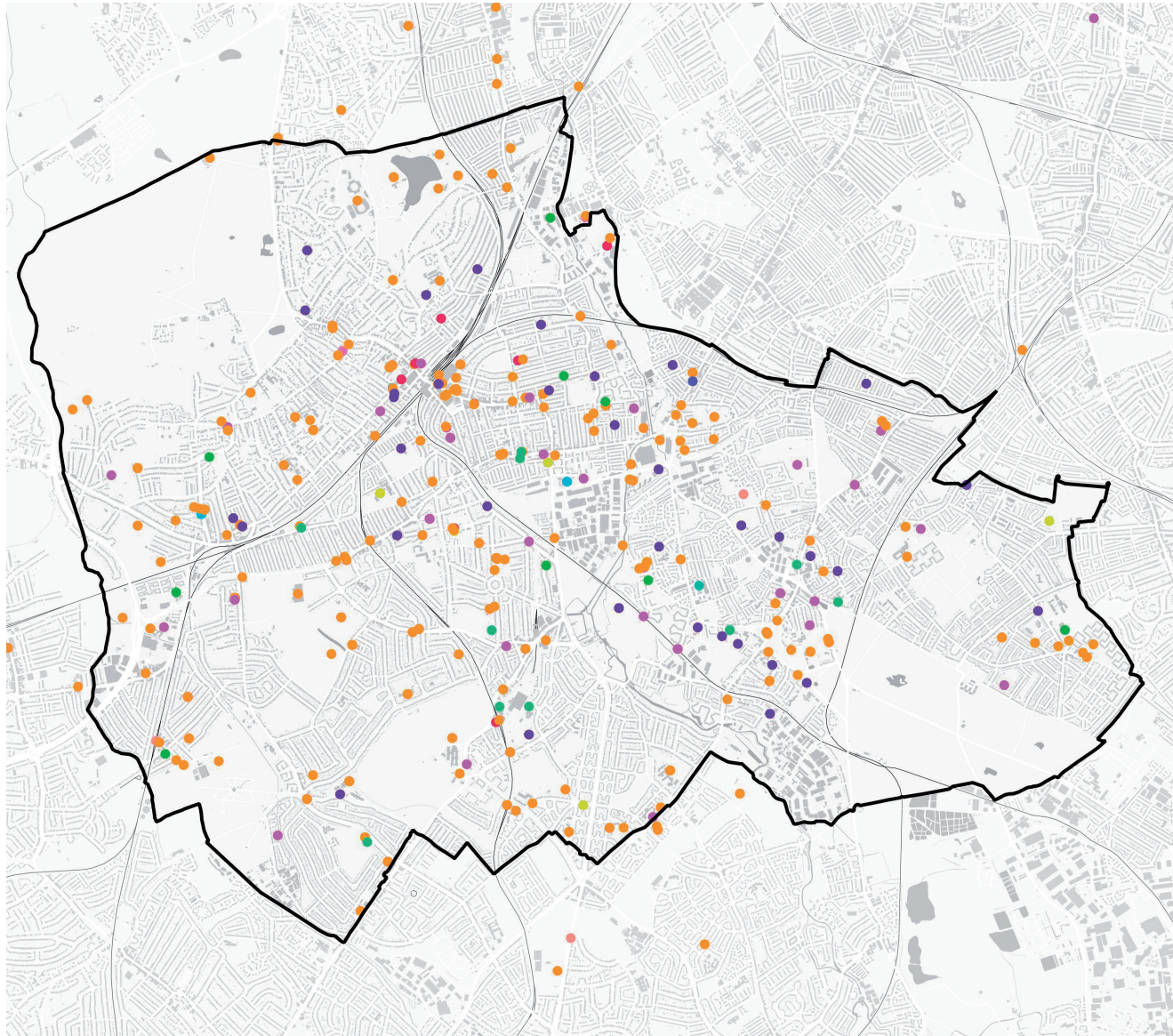
Median house prices



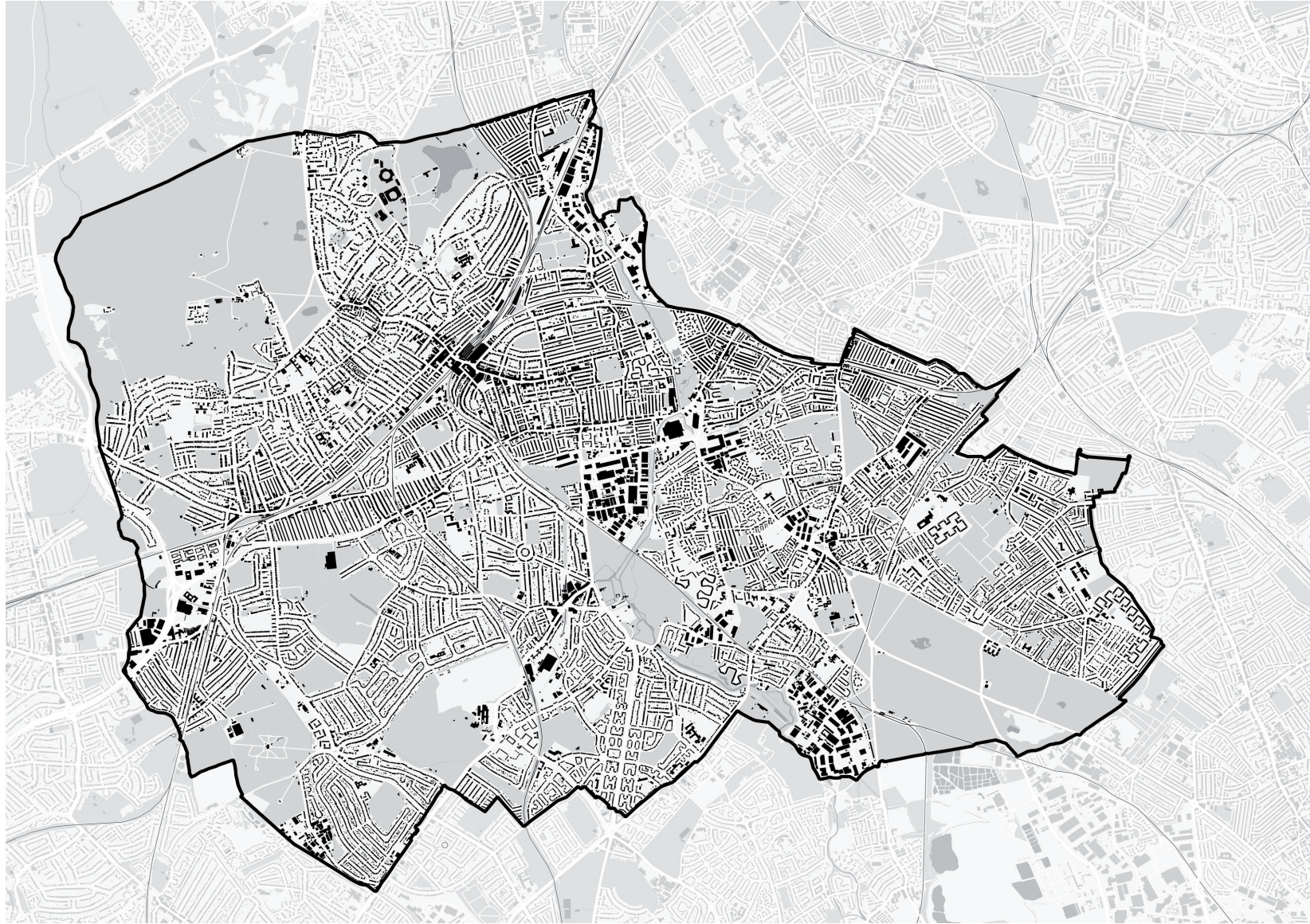
Car or van ownership



Index of Multiple Deprivation (IMD) where 1 is most deprived 10% of LSOAs



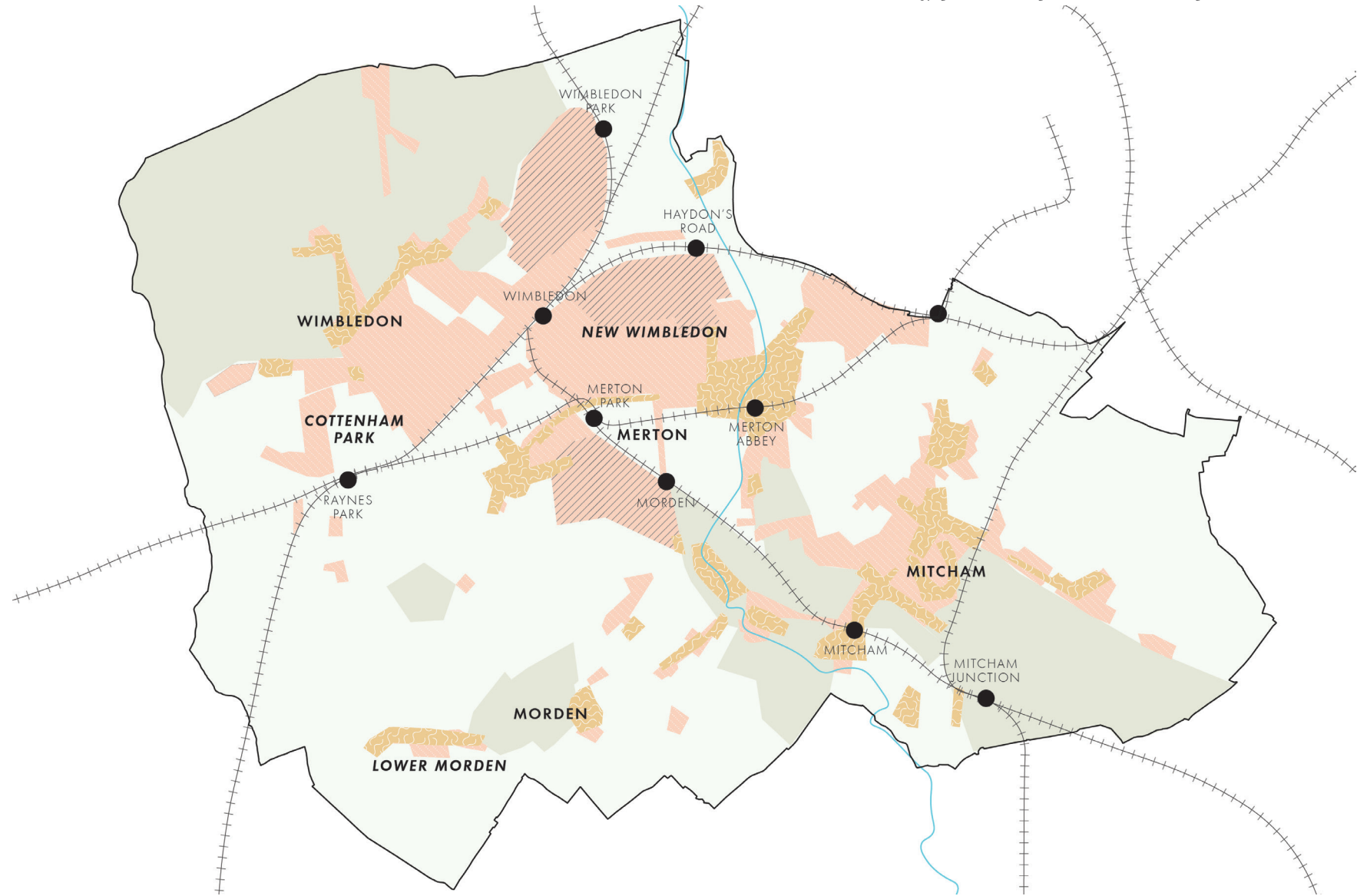
The above plan maps the location and category of community uses, services and organisations listed on MVSC to help illustrate the diversity and importance of this network in Merton (MVSC is a charity that supports the voluntary, community and faith sectors in Merton and promoting and encouraging volunteering for over 35 years)



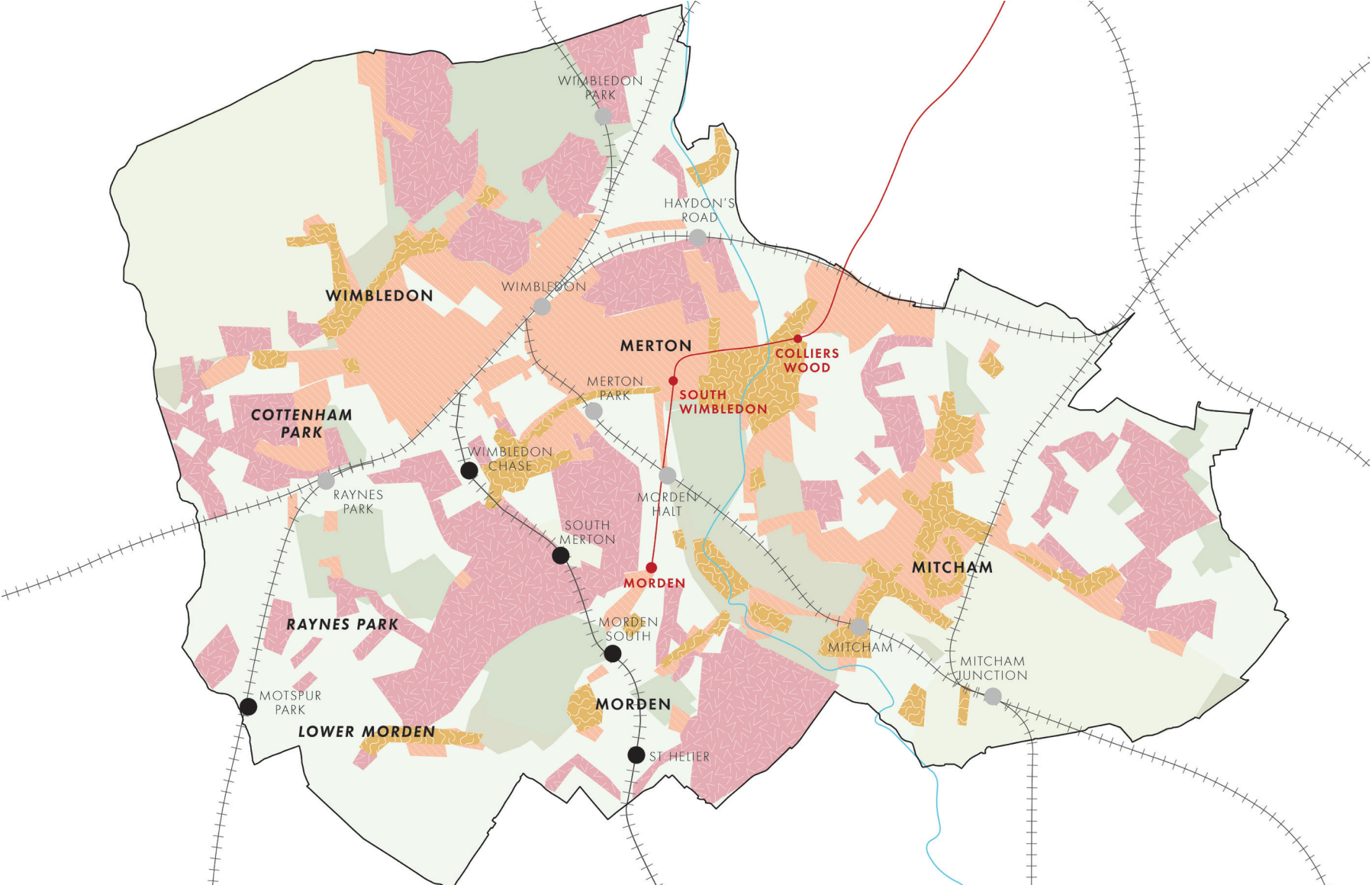
Built morphology - illustrating the grain and scale of buildings within the borough



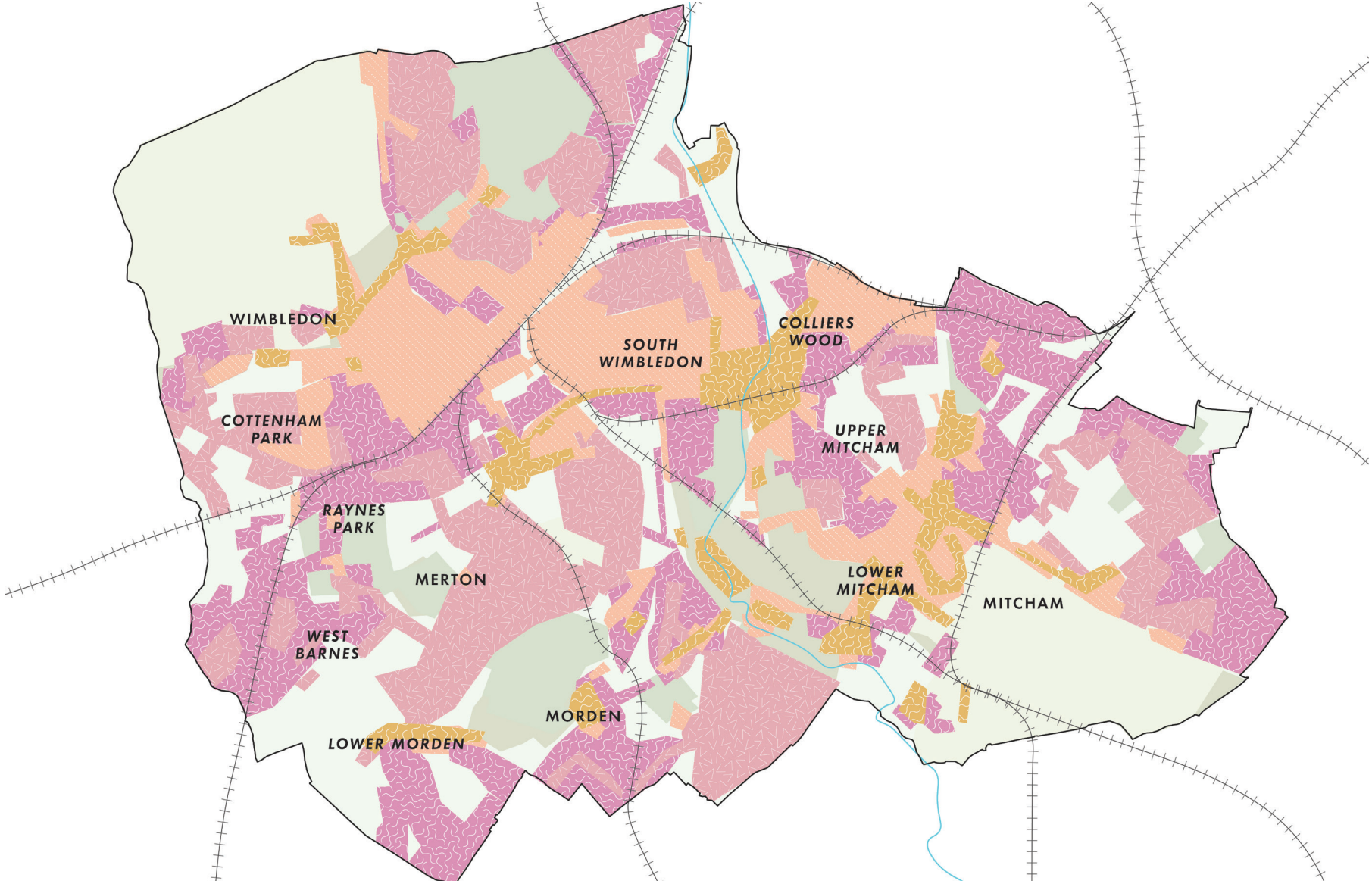
Merton in 1836



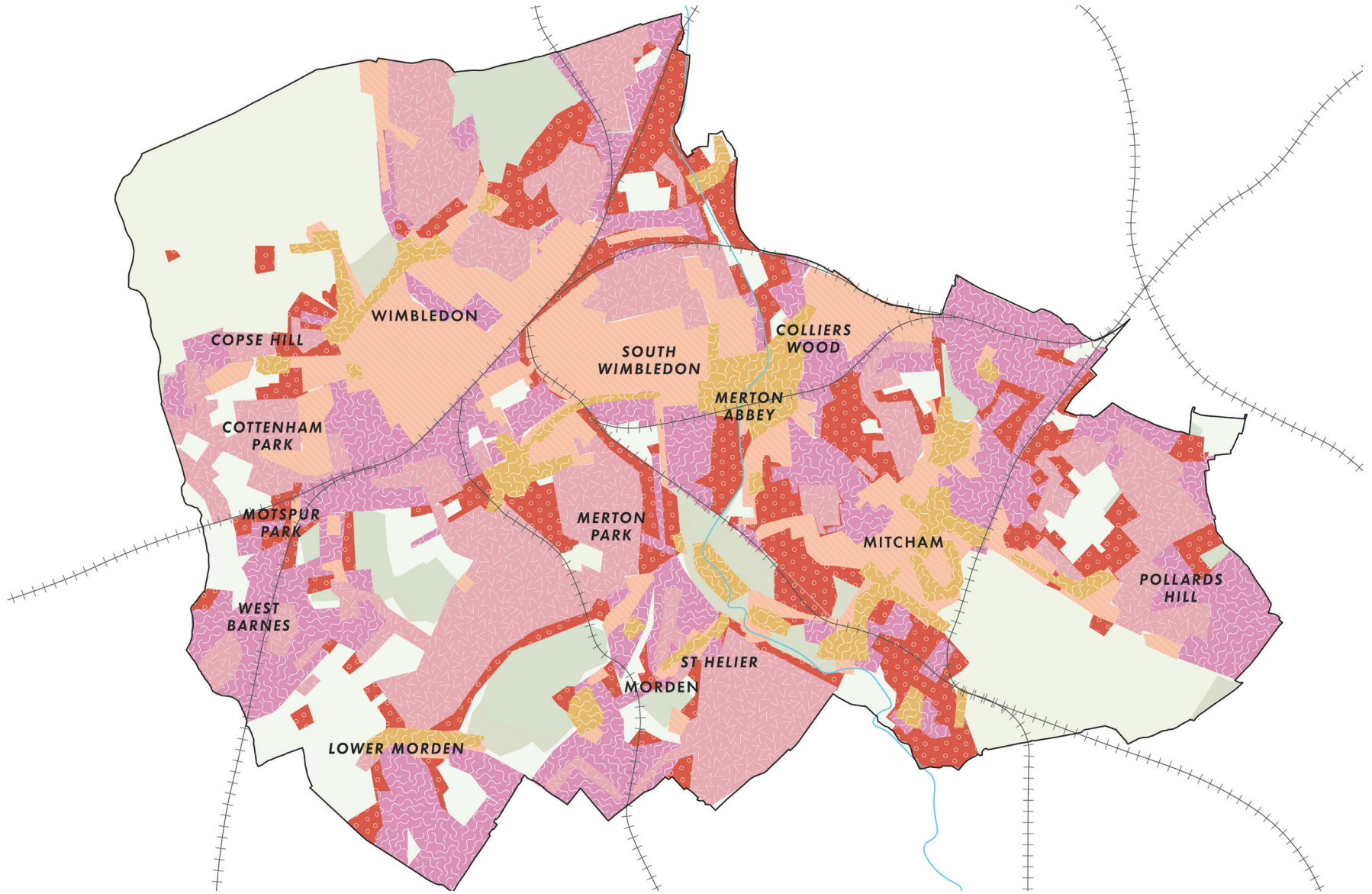
Merton in 1890



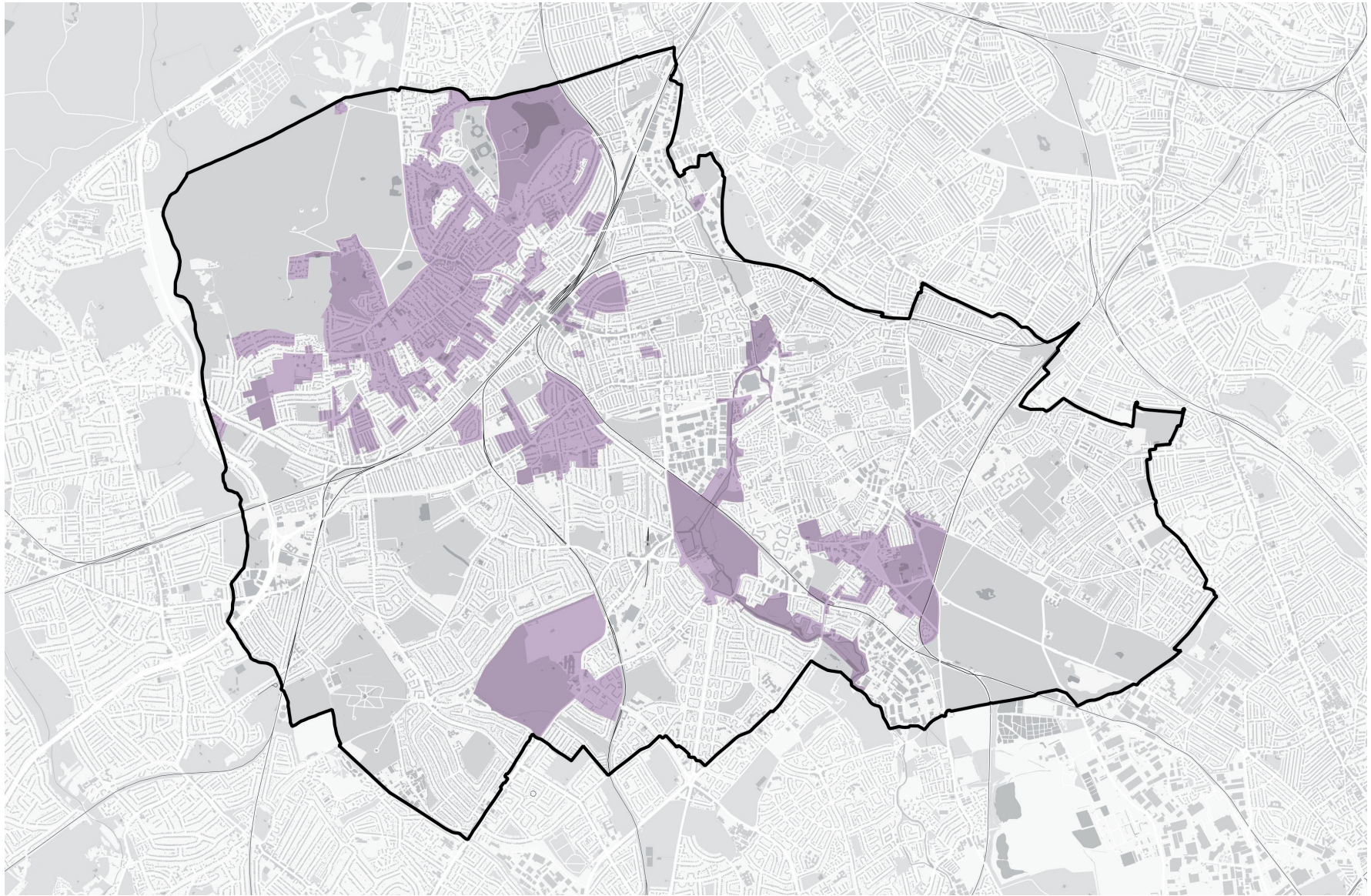
Merton in 1940



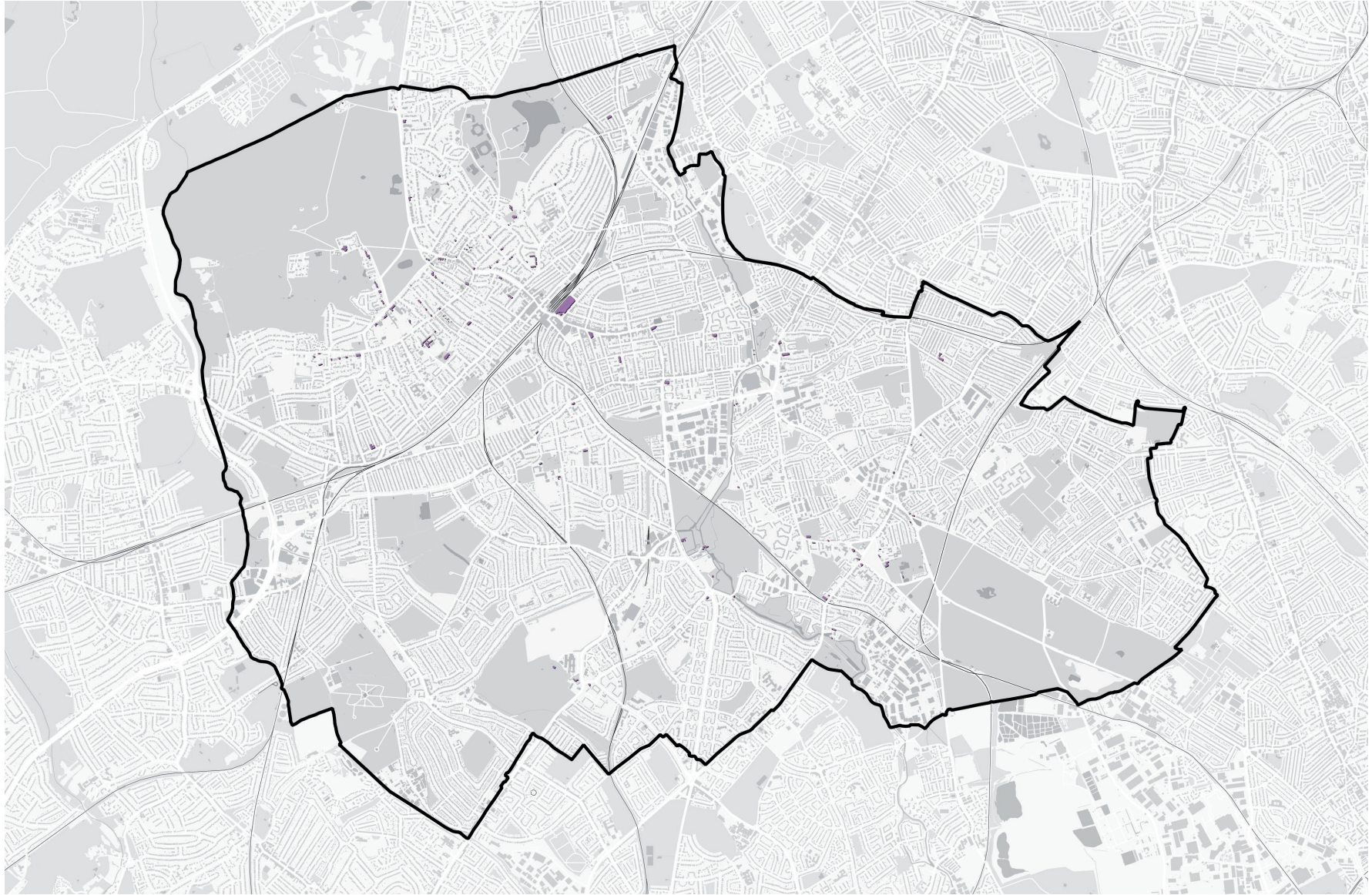
Merton in 1960



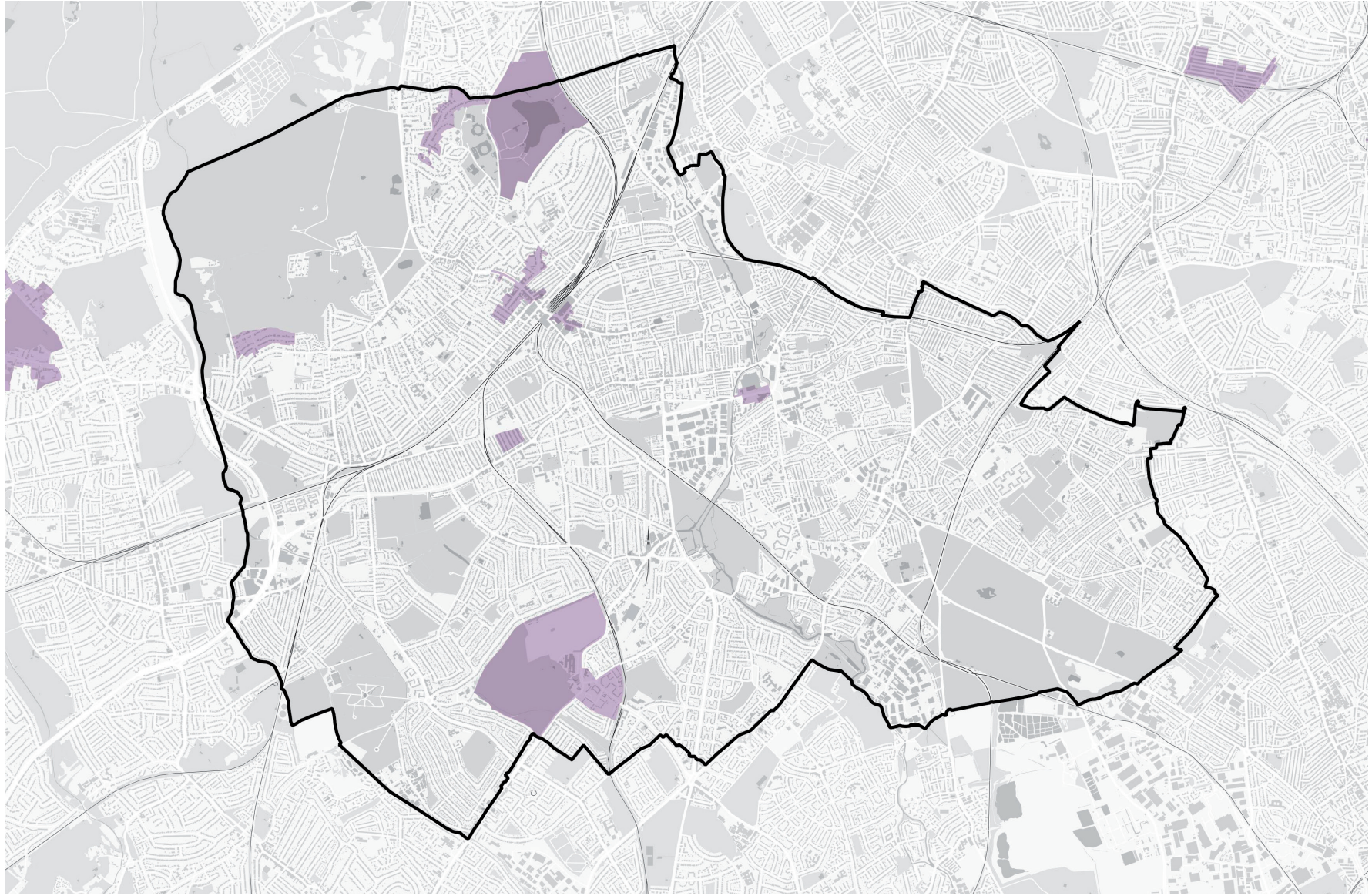
Merton today



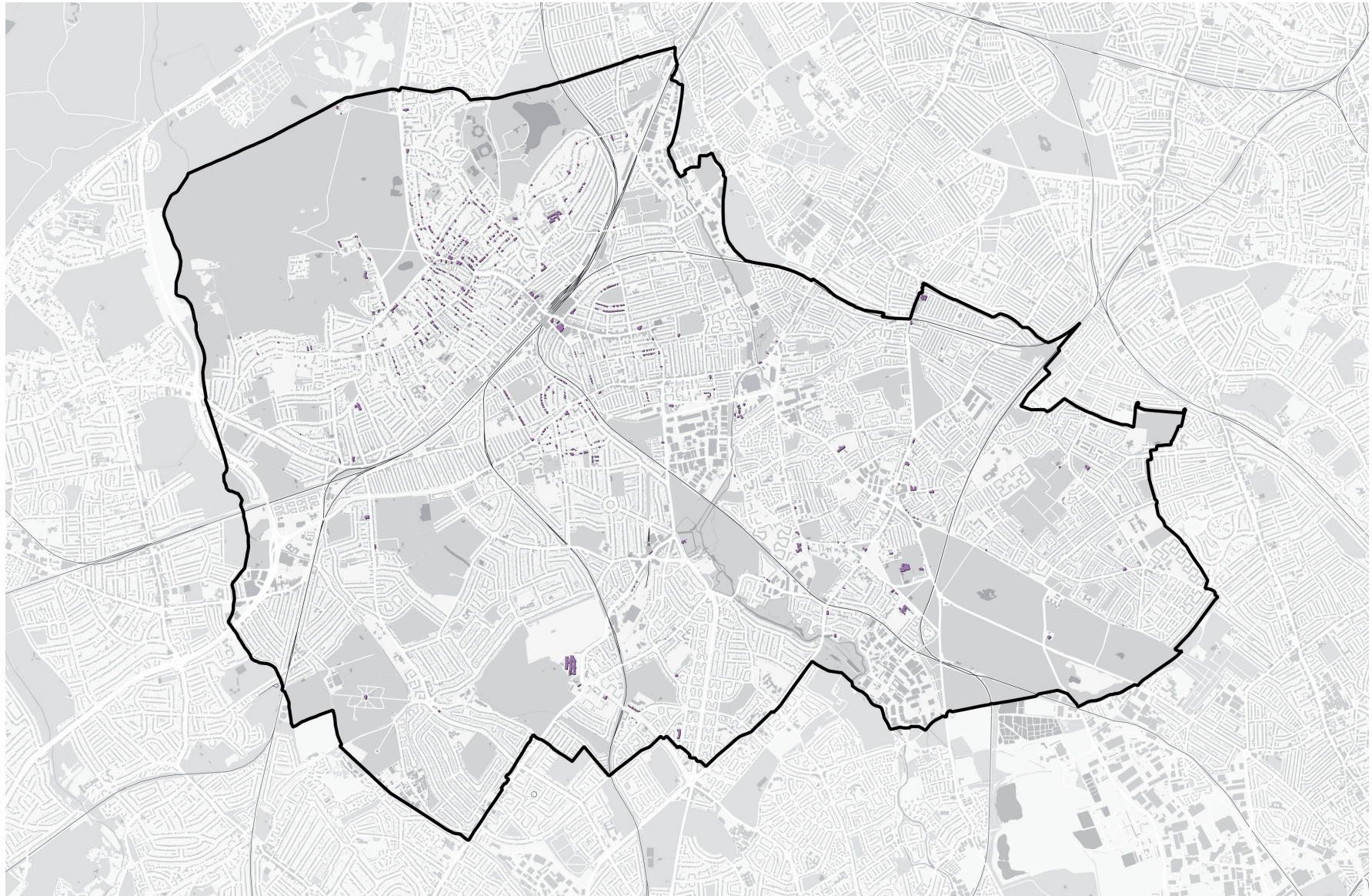
Conservation Areas



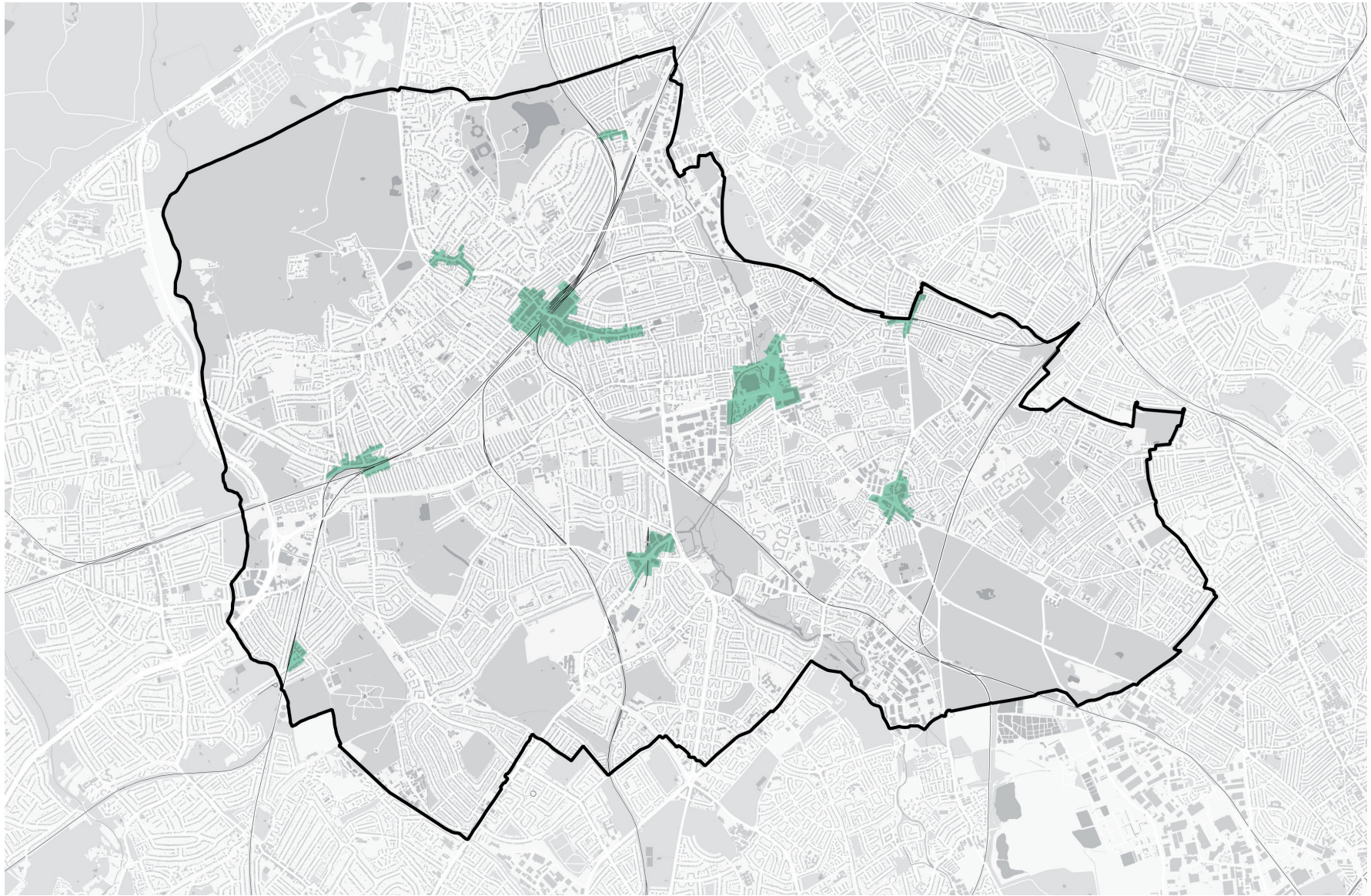
Listed buildings



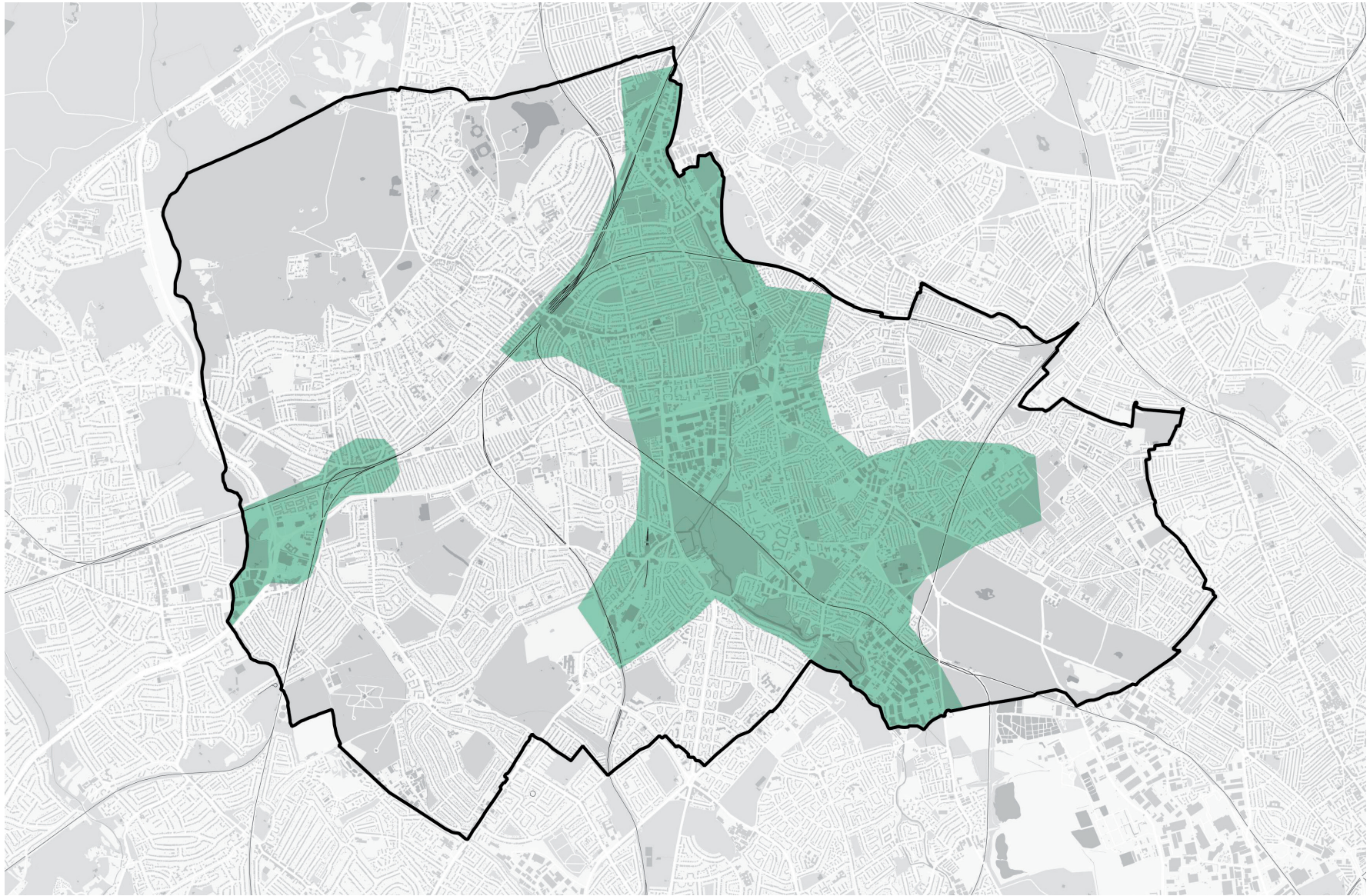
Heritage at Risk



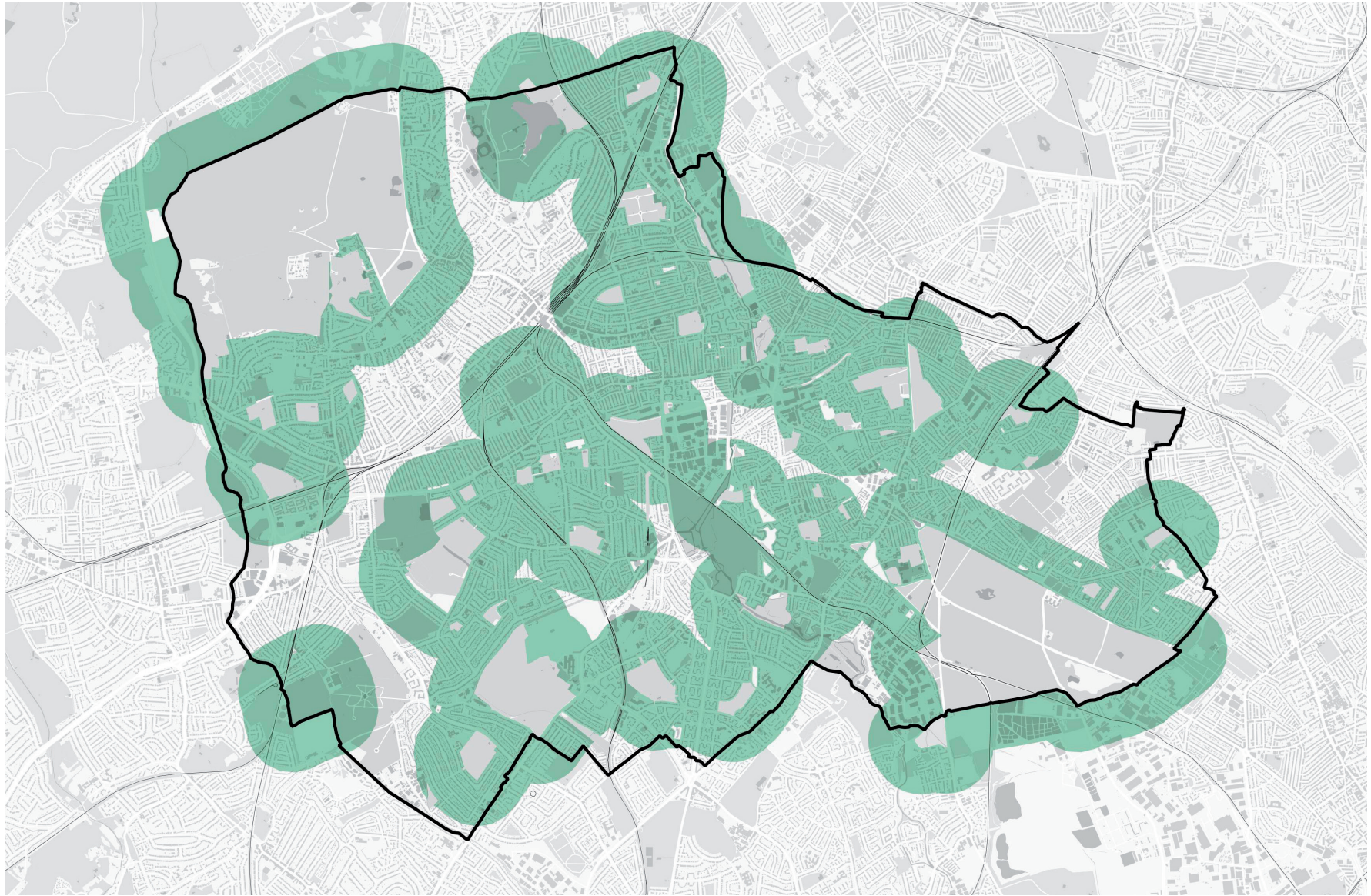
Locally listed buildings



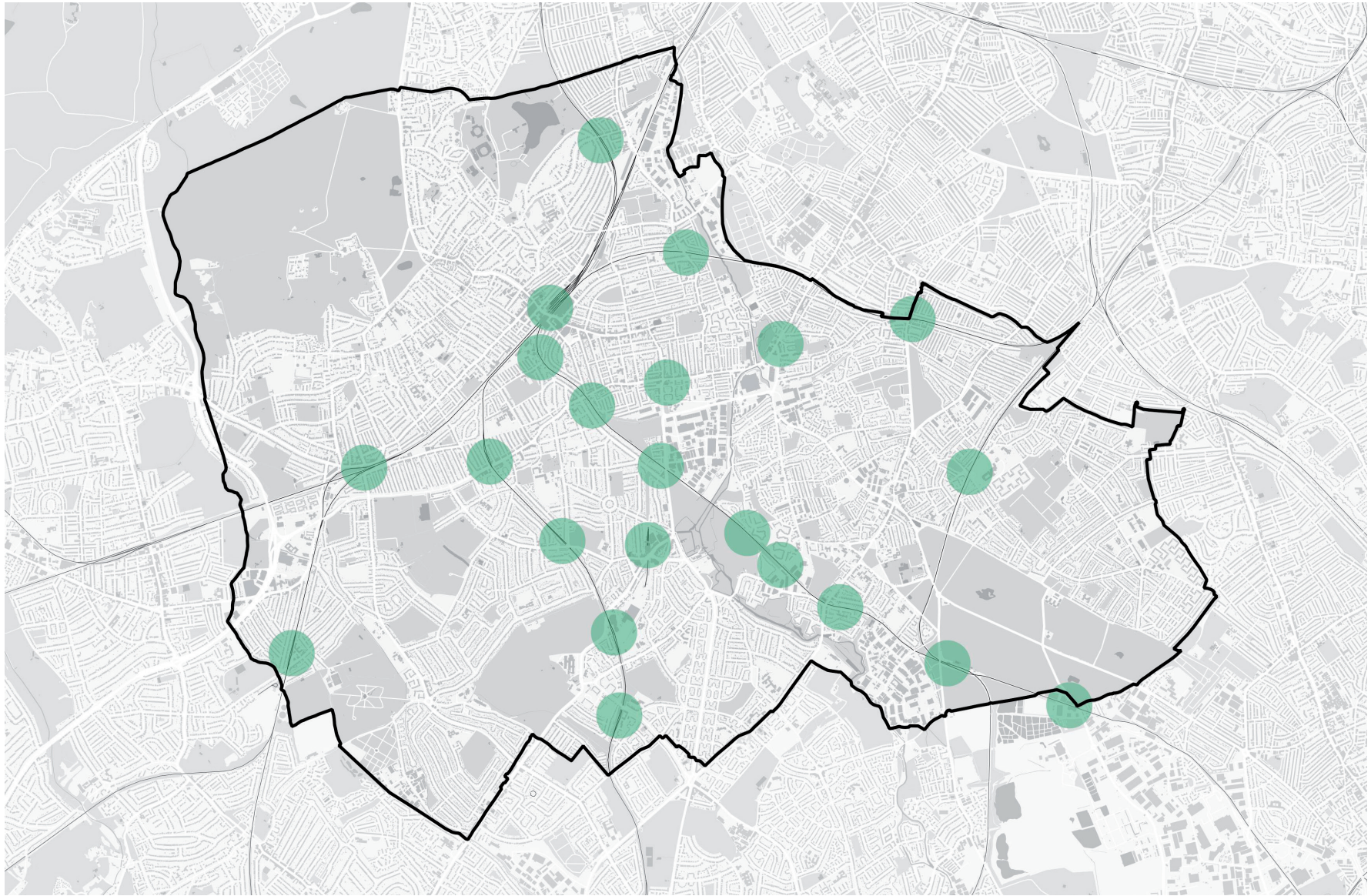
Town and local centres



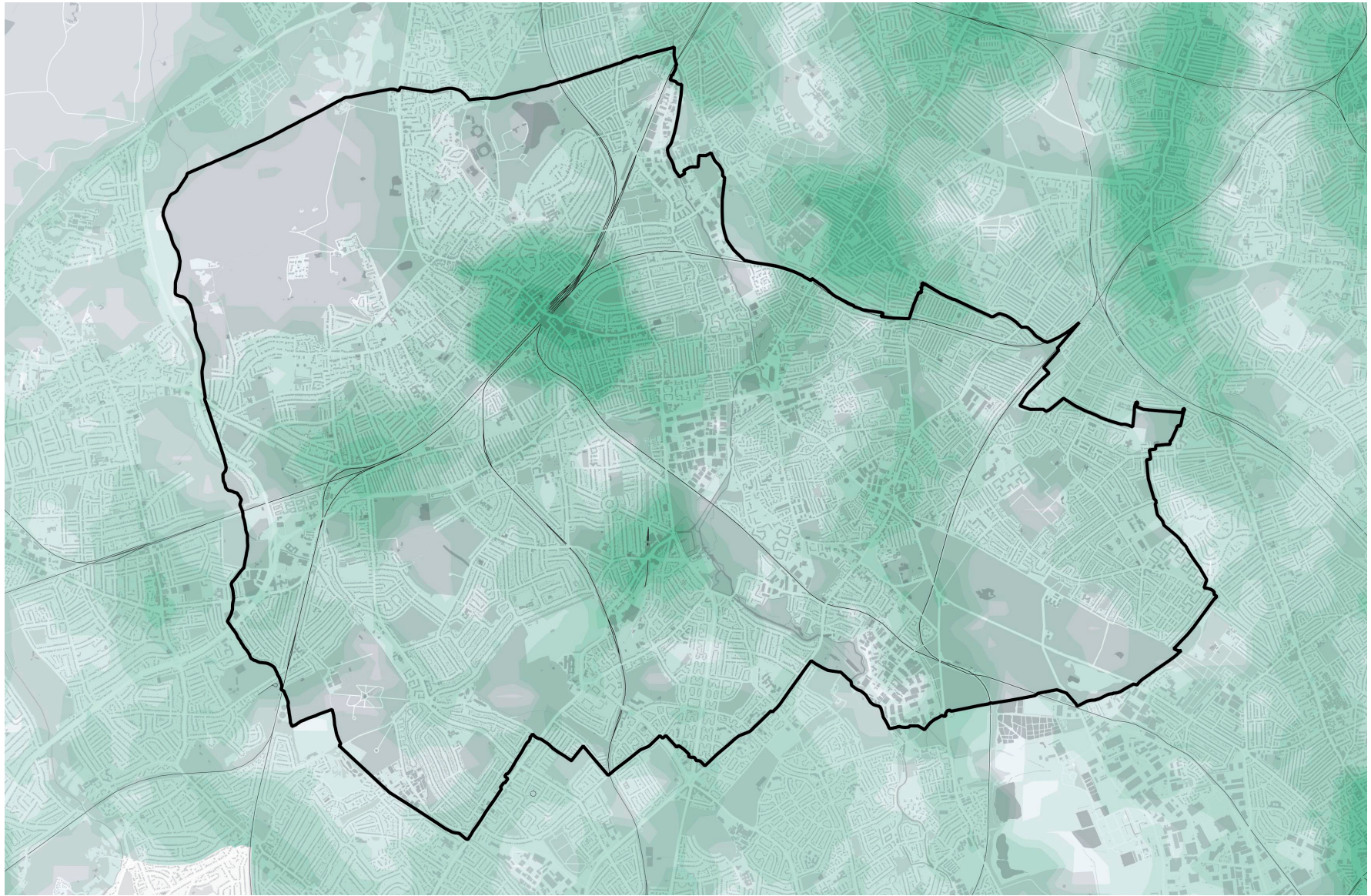
Opportunity Areas



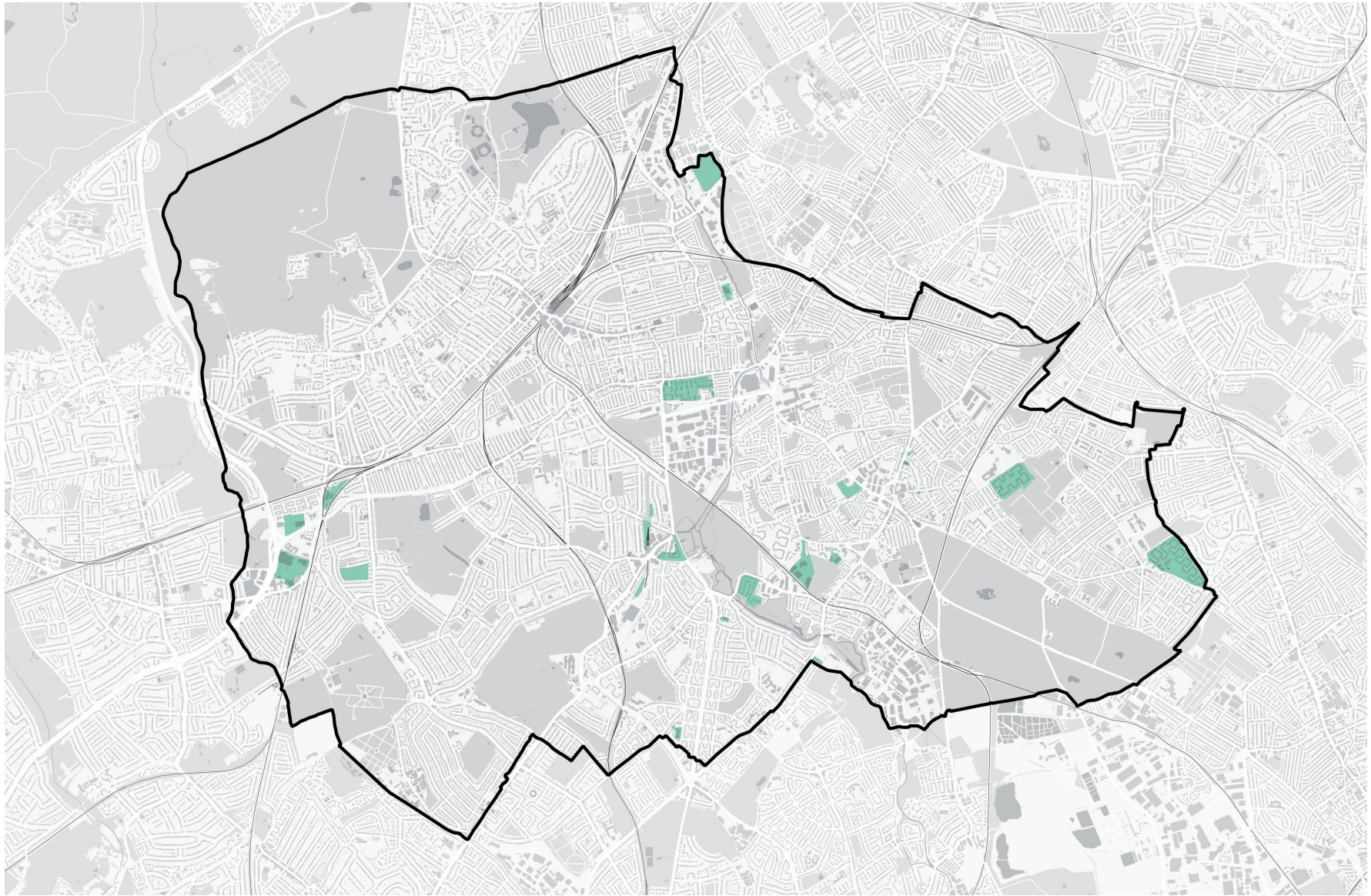
Proximity to a public park



Proximity to a station



Accessibility to public transport



Strategic area for regeneration