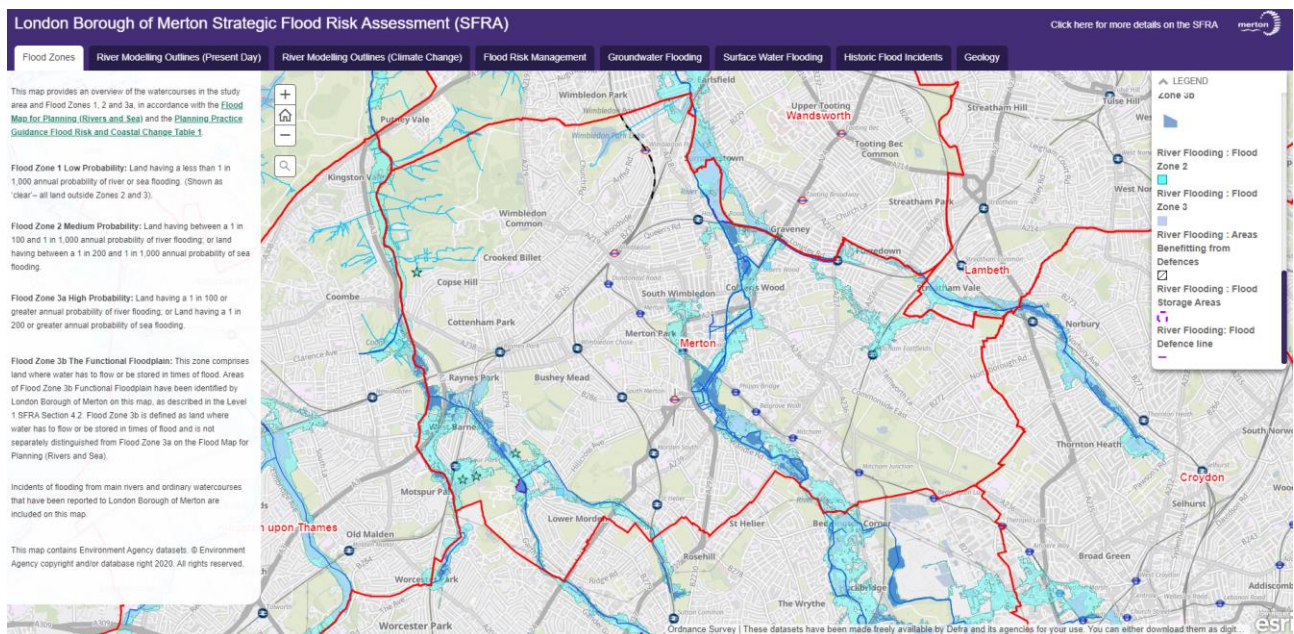


# LB Merton Level 1 SFRA Online Map: User Guide

The Merton SFRA Online Map should be viewed with reference to Section 4 'Flood Risk in Merton' in the Level 1 SFRA Report. The Online Map contains the following 8 maps, which are accessed by clicking on the tabs along the top edge of the Online Map:

- Flood Zones
- River Modelling Outlines – Present Day
- River Modelling Outlines – Climate Change
- Flood Risk Management
- Groundwater flooding
- Surface Water Flooding
- Historic Flood Incidents
- Geology



Each map has the following features and functionality:

- **Description panel** on the left hand side, which provides a description of the information on that particular map.
- **Legend** on the right hand side, listing all of the datasets on that particular map.
- **Location search**, to search for addresses or postcodes.
- **Zoom in/out** capability. It should be noted that for some of the datasets there are restrictions on the scale at which these can be viewed and therefore these datasets may appear in the map only when the view is at a suitable scale.
- **Home** button, which will return the map to the extent of the Merton Borough administrative area.

## Web Map Service (WMS) Layers

Many of the layers within the Merton SFRA Online Map are WMS layers. These are linked directly from the source provider and therefore any updates made to the source data will automatically update in the Merton SFRA Online Map. The Data Register identifies where WMS layers have been accessed.