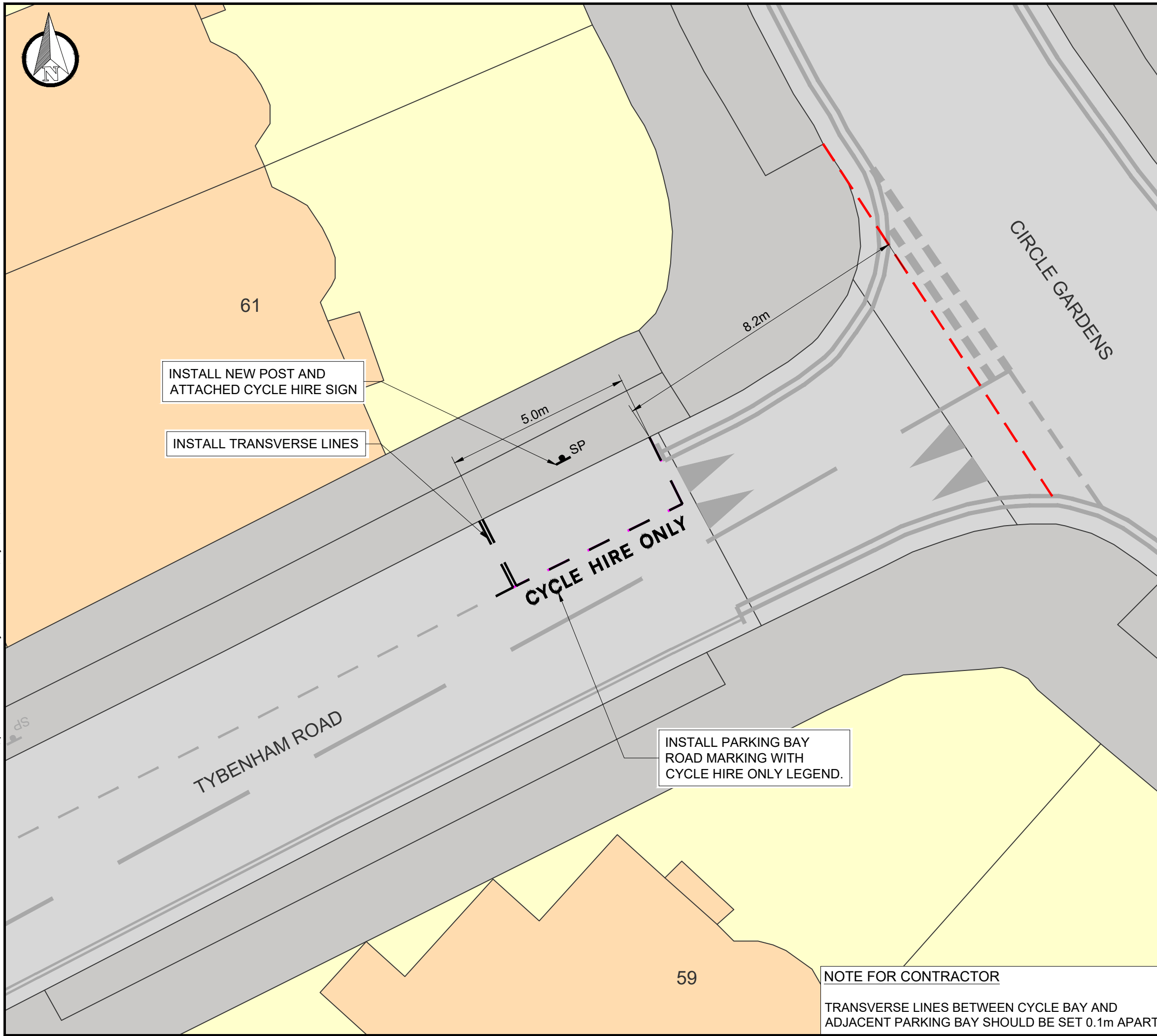


File name C:\USERS\JACK.RANCE\WSP_0365\MERTON DOCKLESS CYCLE HIRE BAYS - TEMP DOCUMENT UPLOAD\01 - DRAWINGS\CPZ ZONES - BATCH 3\CAD\UK0028648.3916-WSP-XX-BR-DR-LP-0100-1-10.DWG, printed on 19 February 2025 11:43:35, by Rance, Jack



DO NOT SCALE

DESCRIPTION

ON THE NORTH-WESTERN SIDE, FROM A POINT 8.2 METRES SOUTHWEST OF THE SOUTH-WESTERN KERB LINE OF CIRCLE GARDENS, SOUTHWESTWARDS FOR A DISTANCE OF 5 METRES.
 INSTALL NEW POST WITHIN CYCLE BAY AND ATTACH CYCLE HIRE SIGN.

KEY

- EXISTING KERB
- EXISTING ROAD MARKING
- EXISTING ROAD MARKING TO BE REMOVED
- PROPOSED ROAD MARKING
- BUILDING REFERENCE LINE
- PROPOSED SIGN AND POST
- EXISTING SIGN AND POST

P01	18-02-2025	MM	FIRST ISSUE	CM	CM
REV	DATE	BY	DESCRIPTION	CHK	APP

DRAWING STATUS: **S2 - FOR INFORMATION**



WSP House, 70 Chancery Lane, London, WC2A 1AF, UK
 T+ 44 (0) 207 314 5000, F+ 44 (0) 207 314 5111
 wsp.com

CLIENT:



PROJECT:
MERTON DOCKLESS BIKE HIRE PARKING BAYS

TITLE:
**TYBENHAM ROAD (FIRST BAY ON NORTH SIDE)
 MERTON, SW19 3JT
 CPZ - MP1 (MERTON PARK)**

SCALE @ A3: 1:100	CHECKED: CM	APPROVED: CM
----------------------	----------------	-----------------

PROJECT No: UK0028648.3916	DESIGNED: MM	DRAWN: MM	DATE: February 25
-------------------------------	-----------------	--------------	----------------------

DRAWING No: MP-7 - TYBENHAM ROAD	REV: P01
--	--------------------

NOTE FOR CONTRACTOR
 TRANSVERSE LINES BETWEEN CYCLE BAY AND ADJACENT PARKING BAY SHOULD BE SET 0.1m APART.

© WSP UK Ltd