



**Sir Joseph Hood
Memorial Playing Field
Management Plan
2016 – 2023
(Updated 2020)**



**This document was produced with assistance from the
Friends of Sir Joseph Hood Memorial Playing Field**



Foreword

I am delighted to introduce this management plan for one of the finest examples of Merton's cherished green spaces.

The borough's parks have always been greatly valued, however this year more residents than ever have benefitted from having good quality, well-managed green spaces on their doorsteps. Throughout the pandemic our parks and green spaces have been a haven for residents to meet friends, exercise, relax and enjoy the natural environment.

Merton continues to strive to enhance and protect the valuable biodiversity, landscapes and heritage in its parks and open spaces. This work is being carried out in collaboration with idverde, our contractors who have considerable expertise, and our partners in the local community particularly the park friends group.

The Council, in partnership with our local stakeholders, is pleased to support and submit this application for Sir Joseph Hood Memorial Playing Fields. We welcome the opportunity for the investment made in this valued park to be formally recognised by the prestigious Green Flag Awards.

Should you require any further information with regards to this application please email publicspace@merton.gov.uk

Alternatively contact Doug Napier our Greenspaces Manager on 020 8545 3657 or doug.napier@merton.gov.uk '.

Councillor Natasha Irons

Cabinet Member for Local Environment and Green Spaces

Merton's Parks Vision

“To provide attractive, high quality spaces with facilities that are modern, safe, clean, sustainable and accessible to all and that encourage healthier lifestyles, strong inclusive communities and an appreciation of nature”.



Photograph: View of basketball goal and tennis courts

Contents

	Page
Foreword	2
1 Introduction	6
• Action Plan summary	
2 Strategic Context	11
• Introduction	
• Economic environment	
• Political context	
• Merton's Community & Business Plans	
• Culture and Sports Framework	
• Marketing and environmental policies	
• Merton's sports pitch strategy	
• Strategic objectives	
3 Site details and plan - Sir Joseph Hood Memorial Playing Field	16
4 Description	18
• Location	
• Local significance and usage	
• History of the site	
• Geology, hydrology and soil type	
• Flora and fauna	
• Trees	
• Facilities and features	
• Access	
• Management	
• Stakeholders & community involvement	
• Activities and events	
• Leases & covenants	
5 Vision for Sir Joseph Hood Memorial Playing Field	29
6 Aims, objectives and management actions	31
1) Creating a welcoming park	
• Current conditions and issues	
• Objectives	
• Management actions	
2) A healthy, safe and secure park	
• Current conditions and issues	
• Objectives	
• Management actions	
3) A well maintained and clean park	
• Current conditions and issues	
• Objectives	
• Management actions	

	4) Achieving sustainable spaces	
	• Current conditions and issues	
	• Objectives	
	• Management actions	
	5) Conservation and Heritage	
	• Current conditions and issues	
	• Objectives	
	• Management actions	
	6) Community involvement	
	• Current conditions and issues	
	• Objectives	
	• Management actions	
	7) Marketing	
	• Current conditions and issues	
	• Objectives	
	• Management actions	
	8) Implementing effective management	
	• Current conditions and issues	
	• Objectives	
	• Management actions	
7	Monitoring and Plan Review	58
8	References	
9	Appendices	59
	• 1. Inspection schedule	
	• 2. Maintenance regime	
	• 3. Plan of the park	
	• 4. Marketing plan and materials	
	• 5. Health and safety policy	
	• 6. Park byelaws	
	• 7. Management structure	
	• 8. Friends' activities	
	• 9. Climate Change Action Plan	

1. Introduction

Sir Joseph Hood Memorial Playing Field is one of the London Borough of Merton's 25 Key Parks, situated in Motspur Park, off Marina Avenue, in the ward of West Barnes on the southwest border between the London Borough of Merton and the Royal Borough of Kingston-upon-Thames. The 12.75-hectare site provides mainly for organised sports and games. The Sir Joseph Hood Memorial Wood, located within the open space, is site of Borough (Grade II) importance for Nature Conservation.

The Playing Field land and adjacent Sir Joseph Hood Memorial Wood, were acquired by the Urban District of Merton and Morden and conveyed to the District Council in 1935. The site was named after the local benefactor, Member of Parliament and ex-Mayor of Wimbledon, Sir Joseph Hood.

The park provides for a variety of active and passive leisure activities and organised sports. The space is popular and highly valued by local residents.

The playing fields are an important community and biodiversity asset and form part of the wider structural open space network of Greater London. The site is designated in the London Plan as Metropolitan Open Land. This level of protection confirms the importance of developing and maintaining this multi-functional open space. Merton Council recognises that our open spaces are an important community asset. They contribute to healthier lifestyles, social cohesion and safer communities.

The existing 2 ha woodland, which is over 140 years old, supports a variety of indigenous flora and fauna. In 1999 the "Millennium Wood" was planted with trees grown from acorns collected from the original woodland as part of Merton Tree Week. In the summer of 2000, following the planting of the Millennium Wood, the mowing regime relaxed at the southern end of the open space, encouraging the development of a diverse grassland environment.

This document summarises the present condition of Sir Joseph Hood Memorial Playing Field and its importance to the local community and the species that live in the woods. The aims and objectives for the sustainable management and future development of Sir Joseph Hood Memorial Playing Field are structured around the eight key criteria of the Green Flag Award:

1. Creating a Welcoming Space
2. Providing a Park that is Healthy, Safe and Secure
3. A Park that is clean and Well Maintained
4. Sustainable Management of Resources
5. Appropriate Management of Conservation and Heritage Features
6. Encouraging Community Involvement
7. Marketing the Facility Effectively
8. Implementation of Effective Management Strategies

Action Plan Progress Summary

Progress against the action plan projects in Section 6 of this management plan is summarised below. Projects are added to this list upon completion or on placement of an order.

#	Description	Objective	Date Completed	Funding Source	Value (£)
1	Replace chainlink fencing along boundary between car park and tennis courts.	1a	2007	S106	9K
2	New interpretive signage and rearrangement of existing signage to improve views from the entrance.	2a	2007	Revenue	3K
3	Directional signage in surrounding neighbourhood	2b	2007	Revenue	n/a
4	Tarmac works responding to tree root damage.	3a	2007	Revenue	40K
5	Car park extended and disabled bays marked out.	3b	2007	Capital	10K
6	Toilets redeveloped to make accessible for people with disabilities and children.	4a	2007	DDA	57.5K
7	Extra seating and litter bins provided around the park	4b	2007	Capital	6K
8	Trim trail and signage	4c	2007	Norlands Foundation	10K
9	Refurbishment of 4 tennis courts	4d	2006	Marathon Trust and Capital	45K
10	Decontamination of old bowling green. Crazy golf area developed	4f	2007	Capital	40K
11	Refurbishment of 2 tennis courts for dual use, tarmac, fencing, markings and provision of basketball	4e	2007/08	Capital	38K
12	Installation of basketball goals	4g	2007	Grant	10K
13	Installation of new cycle route around park and supply of new cycle racks	3c	2007/08	Transport for London	80K
14	Install planters and new seat in crazy golf area	4h	2008	Revenue	1K
15	Install new handrails and disabled access to woods.		2008	DDA	
16	Installation of Zaun fencing around basketball area.	4g	2008	Marathon Trust	25K
17	Replace 4 flat swing units and 4 cradle swings	4i	2009/10	Capital	10K
18	Play builders/ path finders bid Nov 2008	4j	2008	Play England	60K
19	Replant hedge on perimeter of crazy golf and tennis courts	1b	2008	Revenue	0.25K
20	Install new windows on pavilion	4k	2008/09	Capital	10K
21	Repair car park	4L	2009	Capital	8K
22	Knock through two rooms and turn into one large meeting room	4m	2010	Capital	10K
23	Peg grid and reseed parking bay area	1c	2010	Revenue	5K
24	Paint garage door	1d	2010	Revenue	n/a
25	Replace windows at back of building	4n	2010	Capital	3K
26	Remove fencing next to pavilion and repair tarmac edging	4o	2010	Capital	4K
27	Replace polycarbonate panel on graffitied sign by entrance near pony fields	4p	2010	Revenue	n/a
28	Replace tactile sign on ladies toilet.	4q	2010	Revenue	n/a
29	Install Play Pathfinder play equipment	11a	2010	Capital	50K
30	Insulating of pavilion roof	18c	2011	Capital	9K
31	Major refurbishment of paddling pool	4s	2011	Capital	15K
32	Refurbishment of kitchen within pavilion	4r	2011	Capital	6.5K
33	Annual refurbishment of paddling pool	4s	2014	Revenue	4k

34	Major refurbishment of crazy golf (new matting, edging, entrance)	4t	2014	Capital	10k
35	Refurbishment of showers	4u	2012	Capital	15k
36	Installation of fire alarms	4v	2012	Capital	8k
37	Flood defences to prevent further flooding to the pavilion building	4w	2012	Capital	3k
38	Drainage improvements	4x	2014	Capital	5k
39	Remark spaces in car park (partially completed)	4y	2014	Revenue	0.5k
40	Improvements to entrance including gates and height barrier	4z	2015	Capital	35k
41	Installation of new outdoor gym	5a	2016	Capital	25k
42	New Height Barrier	4zzz	2017/18	Capital	5k
43	Repairs to car park	5b	2019	Revenue	20k
44	New welcome to signage at bottom entrance	5c	2019	Capital	5k
45	New welcome to signage at top entrance	5d	2020	Capital	5k

2. Strategic Context

2.1 Introduction

This management plan sets out the vision for the improvement and management of Sir Joseph Hood Memorial Playing Field and provides detailed objectives and action plans to direct Merton Council to achieve this vision over the next 10 years. The objectives of the management plan are aligned to the criteria for the Green Flag Award.

Significantly, the objectives for all of the management plans for LB Merton's open spaces have been developed with the wider strategic objectives for the Borough in mind. These objectives are defined in Merton's Community and Business Plans that are outlined in more detail below in Sections 2.2-2.5.

At a higher level there are a number of national and regional policies and strategies that influence parks and open spaces, although many of these are in their development phase owing to the change of government in May 2010. The Mayor of London and the Greater London Authority have been key players in the London context and the current Mayor is a keen supporter of parks and urban greening projects. The London Plan, the overall strategic Plan for London, recognises the contribution that open and green spaces make to the city. Merton's Core Planning Strategy, a key component of the Local Development Framework, and adopted in July 2011, performs a similar role within the local context. Key policies include CS13 (Open spaces, nature conservation, leisure and culture) and CS14 (Design) that have replaced a raft of relevant open space and environmental policies contained within the Unitary Development Plan (UDP).

2.2 Economic environment

The UK is experiencing an uncertain economic future; with opinions divided about whether it is still suffering from a recession, or whether it is now in recovery; it is also feeling the effects of a general global economic downturn. This overall economic context informs much of our national and local decision-making. Generally, budgets are being cut and austerity measures are being adopted.

The London Borough of Merton has a duty of care to ensure that it sets a fiscally prudent budget, that budget holders operate within those constraints and that it balances its books and maintains an appropriate level of reserves. It also needs to ensure that effective procedures are in place to make certain that budgets are continually monitored and reviewed to ensure that resources continue to be targeted towards meeting key objectives. This financial year it needs to make further budget savings on its medium term fiscal strategy. This need for efficiency savings will inform the Council's overall targets and objectives.

2.3 Political Context

National

A General Election took place on 12 December 2019 and the conservatives were elected with an overall majority.

The government elected in December 2019 has yet to announce detailed strategies and plans for parks and green spaces. However, a statement on the Direct.gov.uk website states:

Good quality parks enhance the quality of life in towns and cities. Parks provide a focal point for communities, a place for relaxation or recreation, and the opportunity to experience nature in an urban environment.

Previous governments had a range of initiatives in support of parks and green spaces, including six Urban Green Space Taskforces, Living Places: Cleaner, Safer, Greener', 2002, and a Community Plan, 'Sustainable Communities: Building for the Future', 2003. A regional programme of action for London included: ensuring communities are prosperous, safeguarding green and open space and well designed, accessible and pleasant living and working environments. However all these policies are now under active review.

Regional

The Government Office for London had earlier been scrapped by the coalition government.

The Greater London Authority (GLA) is a strategic authority with a London wide role to design a better future for the capital. While the Mayor and the London Assembly are elected by Londoners, the staff of the GLA is a permanent body that provides continuity in the ongoing development and delivery of strategies for London. There was a mayoral election in spring 2016 and Sadiq Khan was elected. He states that: "Our parks and acres of green open space are part of our city's DNA".

The Mayor's London Plan is the overall strategic plan for London. It sets out an integrated economic, environmental, transport and social framework for the development of the capital over the next 20 to 25 years. It has 6 main objectives including:

A city that delights the senses and takes care over its buildings and streets, having the best of modern architecture while making the most of London's built heritage and which makes the most of and extends its wealth of open and green spaces and waterways, realising its potential for improving Londoners' health, welfare and development.

The Greater London Authority has signalled its support for parks in the capital by launching several new initiatives including the Programme for Parks and Trees in 2009, with an investment of £6m to be spent on selected parks. In

addition it has made £4m available to fund the planting of an additional 10,000 street trees.

In 2010, the Mayor launched a new Safer Parks Award. The overall aim of the award is to recognise good practice in:

- Tackling specific problem of anti-social behaviour and/or crime
- Challenging public perception that a specific park is unsafe
- Encouraging greater use, and enjoyment, of parks
- Encouraging and supporting community action to improve safety in London's parks.

The award has been discontinued since 2012.

Local

London Borough of Merton is under majority Labour control since May 2014. Previously it was under no overall control with Labour undertaking a minority administration.

COVID19

The global epidemic has effected Councils up and down the country. As an authority our main priority has to been to protect and shield the most vulnerable in our society whilst still delivering essential services. Parks have been at the forefront having experienced unprecedented visit numbers as people seek to take daily exercise in the fresh air. Some facilities have had to be temporarily closed (such as outdoor gyms or MUGA's) during lockdown periods. We continue to monitor and adhere to government guidance so that we can serve our residents.

2.4 Merton's Community & Business Plans

Significantly, the objectives for all of the Management Plans for LB Merton's open spaces have been developed with the wider strategic objectives across the borough in mind. These objectives are defined in the Merton Community and Business Plans.

Merton's Community Plan 2020-2026, has been developed and implemented by the Merton Partnership (the Local Strategic Partnership), which sets out the overall direction and vision for the borough until 2026 plus a set of commitments and activities to achieve this vision. The Community Plan was refreshed in 2020 to take into account demographic, legislative and policy changes, and now sets out a vision, pledges to deliver the vision and details of achievements to date under the following headings:

- Merton: A place to work
- A healthy and fulfilling life
- Better opportunities for youngsters
- Keeping Merton moving
- Being safe and strong
- Contributing to your community

It covers a range of issues about living and working in Merton, such as housing, the environment, the economy, transport, safety, health, culture and the needs of particular groups like carers, disabled people, older people, children and young people. The key themes of the community plan are:

- Children's Trust
- Health & Wellbeing Board
- Safer & Stronger Communities
- Sustainable Communities & Transport

The Community Plan sets out Merton's aspirations for the local area, and is based on a wide range of evidence, data and consultation that has identified the key concerns for residents, and the big issues that the Partnership needs to focus upon to ensure it improves the quality of life for everyone who lives in Merton. The Council itself has undertaken a significant consultation exercise with local people. The results of this have contributed to the vision and priorities contained within this Plan. The Plan also sets out the key actions the Partnership will be taking to ensure we achieve our vision and priorities.

The summary of the Community Plan states: By 2026 Merton Council will be smaller, reducing in size. Our top priority will continue to be to provide safe services of the best possible quality. Providing value for money services to our residents is at the heart of our business and we must be able to demonstrate that all of our services represent best value for money. We will do this by finding innovative solutions to maximise future efficiency. We will deliver services that customers want and need and, where possible, involve our customers in service specification and design.

Delivering quality and value services in an era of significantly reduced resources will require strong and determined leadership. A single business view is essential to ensure a 'One Council' approach is followed in everything we do. Leaders at all levels will be visible and lead by example.

A key action point from the Community Plan is to 'Manage parks and gardens to protect and enhance local biodiversity by integrating biodiversity management methods into parks management plans.' Some 2,500 new trees have been planted in local open spaces and along the borough's highways. Biodiversity enhancements have focused upon heathland re-creation and pond restoration works.

For further information go to:
<http://www.merton.gov.uk/community/communityplan>

For further information, go to:
<https://www.merton.gov.uk/council-and-local-democracy/finance/budgets>

2.5 Culture and Sports Framework

The value of arts and culture contributing to a fairer, better, and healthier society is a matter of constant debate, yet there is already academic and empirical evidence

that demonstrates this intrinsic value. Our parks and open spaces are central to the variety of cultural activities offered by the Council.

The Council has produced a new Culture and Sports framework which sets out how the Council will support a wide range of sporting, leisure and cultural activities to enhance the lives of its residents.

The services provided include: arts, sports, leisure, parks and open spaces, children's playgrounds, activities for all ages and heritage.

These services have the potential to deliver and contribute to Merton's priorities and wider social outcomes; in particular, programmes to improve health and wellbeing; learning, skills and employability, economic resilience, positive behaviour and community cohesion. Furthermore, Culture and Sports services have the ability to develop innovative programmes to deliver against a range of outcomes and are an effective tool in promoting and facilitating behaviour change and empowering people, leading to improved life chances. For further information go to:

http://www.merton.gov.uk/leisure/arts/culture_and_sports_framework.htm

2.6 Marketing and Environmental Policies

Merton Council is committed to the principles of 'sustainable development' and 'Local Agenda 21'. The Merton Environmental Action Plan stems from these commitments.

Achieving sustainable development requires making decisions that take into account relevant environmental, social and economic factors. Merton is committed to integrating these three areas across Council policy in all departments.

Merton Council recognises the need for urgent action to address environmental problems. The Merton Environmental Action Plan complements and links with other Merton strategies and plans which address sustainable development issues, such as the Economic Development Strategy, the Community Plan and the Crime and Disorder Strategy, amongst others.

The aim of Merton's Environmental Action Plan is to:

Encourage and facilitate the involvement of residents, businesses and other organization in helping to create an environmentally sustainable Merton, in accordance with the wider principles of sustainable development.

To achieve this aim the plan needs to:

- Encourage, inspire and support willingness, across the different communities in Merton, to take action to help the environment;
- Highlight opportunities for actions that can be taken by different sectors of the community to enhance the environment;
- Provide information and celebrate achievement in supporting the environment.

For further information about the practical steps Merton Council is making to improve our environment go to:

<https://www.merton.gov.uk/assets/Documents/8%20Environment%20Chapter%20Merton%20Stage%202%20draft%20Local%20Plan.pdf>

2.7 Merton Sports Pitch Strategy

In 2011 the Council recognised the need to obtain an in-depth sports pitch analysis to enable it to deliver services and facilities in a strategic manner giving a more balanced service provision borough-wide. This will enable the Council to provide facilities where they are most useful both to the local authority and the local community.

This was achieved by commissioning specialist consultants to survey local outdoor sports service provision and facilities and draw up some key recommendations, The Sports Pitch Strategy, albeit still in draft form at the time of writing, gives an insight into the key improvements in terms of the type and location of facilities that will best benefit local communities within Merton.

In 2019/20 a new piece of work is now finalized and can be viewed here:

<https://www.merton.gov.uk/planning-and-buildings/planning/local-plan-research>

2.8 Sir Joseph Hood MPF and Merton's Strategic Objectives

Sir Joseph Hood Memorial Playing Field is an important feature within the overall Merton open space network and has an essential and individual role in meeting the Council's wider strategic objectives. Merton's Community and Business Plans articulate the key social, environmental and economic themes around which Merton Council is trying to improve the quality of life for our residents.

The table below illustrates how the site contributes to Merton's wider strategic objectives:

Sustainable Communities	Safer, Stronger Merton	Healthier Communities	Older People	Children & Young People
Improving local water, soil and air quality	Accessible facilities for people living with disabilities	Sports facilities tennis, basketball and football facilities	Accessible car parking	Paddling pool & play areas
Protecting, enhancing and promoting local biodiversity	Inspected and well-maintained facilities	Good quality toilet facilities	Safe access on all paths	Pavilion Rascals Softplay
Protecting local urban amenity	Good policies and facilities for safe dog walking	Good pedestrian access to all parts of the site	Good quality site furniture	Crazy golf
Grass and woodland management	Staff members on site at peak times	Trim Trail	Handrails on bridge access to woods	Organised education activities
Active, enthusiastic Friends Group and other stakeholders	Engagement with the local community	Organised Healthy Walks	Seating and plant beds in crazy golf area	Little League Football
Installation of cycle route through park	Installation of fencing and footpaths	Cycle route	Good quality footpaths	Australian rules football

3 Sir Joseph Hood Memorial Playing Field

3.1 Site Details

Name	Sir Joseph Hood Memorial Playing Field
Address	Marina Avenue, Motspur Park, West Barnes.
Contacts	General enquiries: 020 8545 3677 or leisure@merton.gov.uk Friends Group: Caroline Ventom 020 8942 5605 or ventoms@btinternet.com Sophie Cabral 020 8404 8346 or cabral sophie@yahoo.co.uk
Web	www.merton.gov.uk/leisure/parks
Grid Reference	Easting and Northing 522750,167250
Designation	Metropolitan Open Land Local Nature Reserve Site of Borough Grade II Importance for Nature Conservation.
Ownership	Leisure Services, London Borough of Merton
Size	12.75 hectares
Type	Playing Field/ Recreation Ground Sir Joseph Hood Memorial Wood designated Metropolitan Open Land.
Legal Interest	Transferred by way of a conveyance 24 th October 1935.
Byelaws	See Appendix 6
Access	Opening hours: Monday – Friday 0800hrs to dusk Saturday, Sunday and bank holidays 0900hrs to dusk
Local Facilities	Sports pitches Play area and paddling pool Tennis courts/ basketball court/outdoor table tennis/crazy golf Multisport area Pavilion (changing rooms, toilets, community room, playgroup) Café in summer Woodlands and meadow Neighbourhood recycling
Transport	Train: Motspur Park station (3 minutes walk)

Buses: K5

Parking

37 marked bays & 2 disabled bays

SIR JOSEPH HOOD MEMORIAL PLAYING FIELD

Sir Joseph Hood Memorial Playing Field is situated in Motspur Park, off Marina Avenue, in the ward of West Barnes. It is on the southwest border between the London Borough of Merton adjacent to the Royal Borough of Kingston upon Thames. The 12.75-hectare playing field provides mainly for organised sports and games. The nature woodland located on the Western boundary is a site of Borough (grade II) importance for nature conservation.

The Playing Field land and adjacent woodland were acquired by the Urban District Mitcham and Morden and conveyed to the District Council in 1931. The site was named after the local benefactor, Member of Parliament and ex-Mayor of Wimbledon, Sir Joseph Hood.

The playing fields are an important community and biodiversity asset and form part of the wider structural open space network of Greater London. The site is designated in the London Plan as Metropolitan Open Land. This level of protection confirms the importance of developing and maintaining this multi function open space. London Borough of Merton recognises that our open spaces are an important community asset. They contribute to healthier lifestyles, social cohesion and safer communities.

The existing 2 hectare woodland, which is over 140 years old, supports a variety of indigenous flora and fauna. In 1999 the "Millennium Woodland" was planted with trees grown from acorns collected from the original woodland as part of Merton Tree Week. In the summer of 2000, following the planting of the Millennium Wood, the mowing regime relaxed at the southeastern end of the open space, encouraging the development of a diverse grassland environment.



KEY
Millennium Woodland
Local Nature Reserve
10m Scale

CONTACT DETAILS
Enquiries and Sports Bookings 020 8545 3677
Play areas 020 8545 3655 or 8545 3658
Grounds Management 020 8545 4114
All Other Council Enquiries 020 8274 4901
Nature Conservation 020 8545 3658

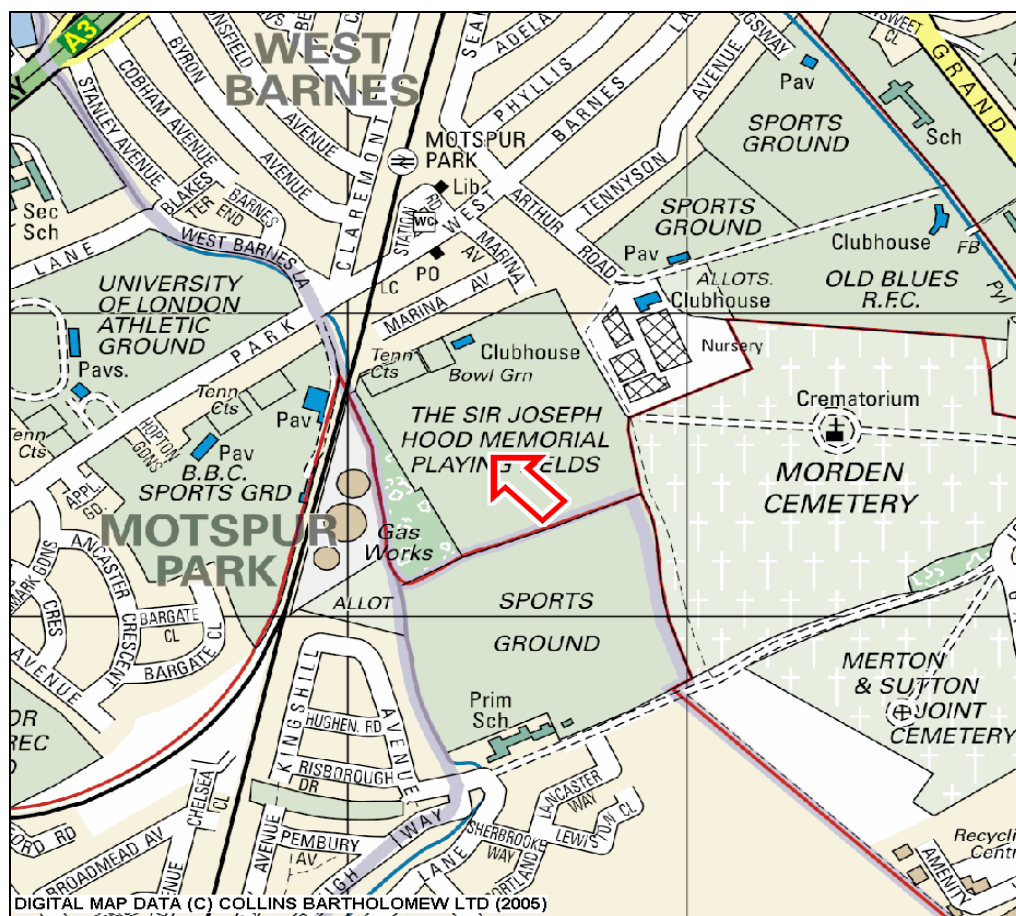
email: leisure@merton.gov.uk website: www.merton.gov.uk



4 Description

4.1 Location

Sir Joseph Hood Memorial Playing Field (SJHMPF) is located off Marina Avenue, Motspur Park in West Barnes Ward on the southwest border of the London Borough of Merton and the Royal Borough of Kingston upon Thames. The main entrance to the Playing Field is to the north of the site off Marina Avenue. There are two pedestrian entrances on the eastern boundary of the playing fields close to the Morden Crematorium and Cemetery and one on the southern boundary.



4.2 Local significance and usage of Sir Joseph Hood Memorial Playing Field

Sir Joe is popular with all members of the community. The variety of recreational activities and the green spaces and landscapes attract a variety of visitors who come to appreciate the attractiveness of the park's planting and landscaping and others who come to participate in recreation of a more active type.

A key platform of the Merton Community Plan is encouraging healthier lifestyles amongst our communities. Our parks and open spaces, including Sir Joe, are essential facilities for sport and physical activity.

Recreational uses in the park include:

- Football – including Little League and Australian Rules Football
- Walking and jogging
- Cycling (Shared footpaths)
 - Dog walking
 - Paddling pool (in summer)

Many people just visit the site to enjoy the peace and quiet and appreciate the landscaping. Parents with young children are often seen during the day. At lunch time people can be found enjoying their lunch break away from the office.

The playing field is very popular with parents and children during the summer months especially when the paddling pool is in operation. During weekends the playing fields are busy with football matches and people enjoying the open space and woodlands. During the week the facilities are widely used by parents with young children and walkers as well as keep fit enthusiasts.

The pavilion is available for hire at weekends on a regular or casual basis for a range of activities including playgroups, child and adult parties, community groups, sports groups and meetings. Hire charges are variable according to the nature, time and regularity of use.

Regular users include:

Little Rascals Children's Playgroup, providing soft play facilities for children between the ages of 0-5yrs. The group uses the building Monday to Friday, 9.30am to 4.30pm. They have a lease agreement issued by the London Borough of Merton in 2011.

Raynes Park Little League football club for boys and girls between the ages of 7 and 12 use the playing field Little League football pitches and the pavilion's kitchen and changing rooms on Saturday morning, usually mid-September to mid-March.

Links Football Club uses the pitches and annex café on Sunday mornings during the football season.

Wimbledon Hawks Australian Rule Football Club uses the site during the summer months.

4.3 History of Sir Joseph Hood Memorial Playing Field

Sir Joseph Hood, after whom the playing field and the adjacent woodland are named, was a local benefactor, Member of Parliament and Mayor of Wimbledon.

At the time of the Reformation, the whole area, consisting of woods, arable and pasture land, belonged to the Priory of Merton. From the early 16th century, and probably long before, an area between the Beverley Brook and the village of Lower Morden formed Hobald's Farm. It was bought by the Garths, Lords of the Manor of Morden, before 1611.

At some time during the 1860s, Richard Garth planted some land to the west of the farm with oak trees and this survives today as Sir Joseph Hood Memorial Wood. The wood contains more than one ancient woodland indicator species, which presumably were surviving here in hedgerows before the wood was planted. As Garth had nearby dog kennels, he probably intended it as a hunting covert. Eventually, in 1931, the Urban District of Merton and Morden

acquired the part of the estate now known as The Sir Joseph Hood Memorial Playing Field, including the wood.

The Playing Field

The Playing Field was developed as a community facility in the 1930s. Tennis courts, a bowling green, a putting green, children's play, and the paddling pool have made this a very popular facility over the years. Following funding cuts in the 1980s and 90s the condition of facilities declined and levels of use followed. This pattern has now been reversed with active community involvement.

Archaeology

No archaeological finds have been recorded at Joseph Hood Memorial Playing Field in the Greater London Sites and Monuments Records.

4.4 Geology, hydrology and soil type

Sir Joseph Hood Memorial Playing Field conforms to the geology of most of Greater London that is of various differing layers of sedimentary rocks. Most significant is the distinctive grey-blue London clay. Sir Joseph Hood Memorial Playing Field is located on London Clay with unclassified terrace material near the Beverley Brook. Topsoil above the clay is up to 5cm deep with an acidity level of pH 5.

The site is level with a drainage ditch that flows into the Beverley Brook demarcating its terrestrial boundaries. As a result of the underlying geology and topography of the site the Playing Field, Memorial Wood and surrounding land are all subject to impeded drainage that can result in water logging during wet weather.

4.5 Flora and Fauna

Aside from the intensively managed football pitches, there are a number of areas of horticultural interest in the Playing Field. The old rose beds in front of the pavilion were replaced by two new shrub beds in 2005. A new border was planted in 2006 adjacent to the car park. The Friends planted daffodil bulbs and the 22nd Wimbledon Beaver Cub Scouts planted wild flower seeds on the eastern boundary in 2006. These are still in evidence.

The Memorial Wood has a dense shrub layer predominantly consisting of elder, hawthorn, blackthorn, ash, field maple, field rose, yew, alder, privet, cherry, holly and bramble. Midland hawthorn, ramsons, wood sedge and small-leaved lime here are usually suggestive of ancient woodland, but the history of this wood indicates otherwise (LEU 1998). Although small, the Memorial Wood also supports a number of common woodland herbs.

The ground flora is generally sparse with much ivy, but on either side of the main footpath, which runs from north to south for the length of the site, hedge woundwort, herb-Robert, hedge bedstraw, cleavers, wood dock and cow parsley all occur. Elsewhere within the wood are Lords-and-Ladies, wood meadow grass and false brome. There is a glade to the west of the main path where butterflies may be seen in the summer (LEU 1998).

At the same time as the Millennium Wood (see section 4.6 below) was planted, some of the amenity grassland areas next to the wood and Southern Boundary were allowed to develop into meadow. These areas are now important nature conservation areas encouraging greater species diversity.

A range of birds can be seen in the Sir Joseph Hood Memorial Wood. Great spotted woodpecker, blackcap, chiffchaff, tree creeper and nuthatch are among those that breed in the wood while stock doves are sometimes present on the fields in the park, the kestrels observed possibly breed on the nearby gasholders. There is a large jackdaw roost in the wood. As the wood is some distance from any major roads, the bird song can be enjoyed in peace and quiet, with the only disturbance from the occasional passing train (LEU 1998).

4.6 Trees

Sir Joseph Hood Memorial Wood

The Memorial Wood covers approximately two hectares and is situated along the western edge of the site bounded by the Beverley Brook. It is designated as a Local Nature Reserve in the LB Merton Unitary Development Plan 2000. It is also listed as a Site of Borough Grade II Importance for Nature Conservation.

The Memorial Wood is the only remaining woodland in the area. It originated as a plantation forest in the 1860s, then a very popular land use. It is comprised of regularly spaced mature oaks of approximately 145 years old with some semi-mature oaks. The open-under storey consists of a mixture of elder, hawthorn, blackthorn, ash, field maple, holly and privet. Ground cover includes patches of Lords and Ladies, ivy and bramble. A small glade is located within the wood.

The woodland has areas of standing dead timber and large gaps have opened in the canopy. The cause of this decline is possibly due to water logging in the past. However, aerial photographs from 1979 show no die-back, suggesting the decline is recent. The woodland floor has a plentiful supply of dead wood. Over the past 10 years, a substantial number of young native trees have been planted along the length of the boundary fence. This has resulted in a dense hedge up to five meters wide in places.

Until 1990, Sir Joseph Hood Memorial Wood was closed to the public as it was designated as a bird reserve. As the fencing was being breached regularly, it was decided to allow pedestrian access by the children's play area. An additional access path and small railway sleeper bridge was installed in 2005 to the southern end of the playing fields. This now allows for circular access around the woodland.

Millennium Wood

Local residents, community groups and school children throughout LB Merton celebrated the new Millennium with the creation of the Millennium Wood. LB Merton was joined by Railtrack, Trees for London and the Friends of the Stout Hall Environmental Education Centre in Wales in supporting the project. A commemorative plaque is located at the southern access point to the two woodlands welcoming visitors to the natural habitat.

This new oak woodland of approximately 0.8 hectares (up to 120m at widest point) was planted in 1999. Situated to the west of the Playing Field, Millennium Wood is separated from the Memorial Wood by a managed meadowland. The new woodland has increased the area of woodland at the site. The new woodland and adjacent meadow have created an important additional habitat for wildlife but as yet have no formal nature conservation designation.

4.7 Facilities and Features

Sir Joseph Hood Memorial Playing Field provides a range of facilities and services for formal and informal play, sport, recreation and educational opportunities for all ages.

Car Park

A tarmac car park has been provided off Marina Avenue inside the main entrance to the site and accommodates 39 vehicles. The parking bays are marked including disabled bays.

Recycling

A Neighbourhood Recycling Site situated on the eastern edge of the site car park provides for the collection of glass, metal, plastic and paper waste. There are additional bins within the park for cans, bottles and paper that can be emptied by the staff on site into the main recycling bins within the car park. These Eurobins are then collected by Merton's Waste services.

Public Telephone

A public telephone box is located on West Barnes Lane a few minutes walk from the entrance to the Playing Field.

Toilets

Toilets are located both outside and inside the pavilion building. The Friends open them during the football season and in the summer when the paddling pool is in operation. Provision includes disabled access toilets.

Youth Facilities

In addition to the informal sports pitches, Raynes Park Little League provide for 7 to 13 year olds on a Saturday morning. Links football club cater for older children on a Sunday morning.

Wimbledon Hawks Australian Rules Football Club is a regular user of the site's facilities during the summer months.

Four upgraded tennis courts were completed in summer 2006. Two further courts were designated for multi-sports use including basketball. In 2007 new basketball goals were introduced. This was funded by revenue raised by the Friends group. In December 2007 London Marathon Trust funding (£25K) was secured for the installation of new heavy duty fencing around the basketball facility.

Children's Facilities

There is a grassed and fenced children's playground situated in the north-western corner of the site. The play area provides a variety of play equipment for 0-14 year olds. Children under seven must have parental supervision. The equipment is installed on tiled, wet-pour safety surfacing. All equipment is purchased, installed and maintained to the European Safety Standard for play equipment. The play equipment is inspected on a daily basis by the park's staff and by an annual independent inspection undertaken by the Royal Society for the Prevention of Accidents.

In November 2008 a Pathfinders and Playbuilders bid was submitted to Play England for £1.5 million to upgrade 22 play areas in Merton. Included in this was a £50k bid for improving the play facilities of SJHMPF. The application

proved successful and the improvements to the playground at SJHMPF were implemented in the spring of 2010.

The pre-existing play equipment included:

- Ausplay four bay cradle swing unit;
- Five small Komplan toddler play units;
- Two spring animals;
- Ausplay four bay flat swing units;
- Large Ausplay multi-play unit with slide;
- Small multi-play unit with slide;
- Brick built square shallow paddling pool with paved surrounds;
- Three ground games painted on playground pathway;
- Picnic tables with benches,
- Benches
- Litter bins
- Shade trees.

The new equipment, funded by the Playfinder money includes:

- Timberplay car tyre swing
- HAGS Play one way Dino cableway
- 2 No HAGS climb stones
- Kompan spinning bowl
- 4 Caledonian boulders

The play area and paddling pool are in good condition and are subject to regular inspections.

Sports facilities

The public health benefits of participating in sport and physical activity are well known and form an important of the Merton Community Plan 2006-2015. Sports facilities at SJHMPF are of excellent quality and are promoted to the wider community through Merton's Sport and Leisure Development Team. The variety of organised and casual activities available to local residents and visitors encourages people to participate in healthy active lifestyles and to enjoy interacting with other members of the community.

Tennis courts/basketball courts/outdoor table tennis

In 2006 the Friends Groups were awarded £30,000 from London Marathon Charitable Trust to upgrade the tennis courts. Match-funding from Merton Council enabled 4 courts to be upgraded and re-fenced. Following public consultation, the remaining 2 courts were made available for multi-sports use including basketball and an outdoor table tennis facility.

Playing fields

The playing field has a total of ten sports pitches situated on an amenity grassland area in the centre of the site. There are:

- Three “Little League” football pitches
- Three full size football pitches
- Three pitches that can be used for either adult or Little League football
- One Australian Rules Football pitch (Summer months)

A trim trail was installed around the perimeter of the park in 2005 funded by a grant from the Norlands Foundation. The trim trail is 1km in length. In addition in 2016 a new outdoor gym was installed in consultation with Friends.

Pavilion

The pavilion is situated on the northern boundary of the playing fields site. Built in the 1930s it consists of a single storey construction of varying height with rendered and painted brick walls under a felted flat roof. The facilities inside include a main hall with capacity for up to 60 people. After consultation with the play group and having monitored the heating bills, the main hall roof was fitted with state of the art insulation in 2011 giving heat retention in the winter months and reducing solar gain in the summer months. This not only reduces the building’s carbon footprint but helps ensure that the building remains economical to maintain and comfortable throughout the year whilst reducing running costs.

The hall leads out to an attractive fenced grassed area to the front of the pavilion. This space is often used as an informal play area for young children. The building also has 4 changing rooms, showers, ladies and men’s toilets and a kitchen adjoining the main hall. An additional small kitchen annex is used as a café during the summer. Half of the café income is reinvested into the site’s facilities. There are also male and female toilets on the outside of the pavilion. The toilets within the pavilion were refurbished in 2007/8 and 2 accessible toilets provided, one of which is accessible from the outside.

4.7 Access

Sir Joseph Hood Memorial Playing Field is a public open access site with pedestrian access at all times. The car park is locked at nights and is open from 8am to dusk on weekdays and from 9am to dusk. There is parking for 37 cars with two designated for disabled badge holders.

The site is generally level with tarmacked paths. The main entrance is at Marina Avenue providing vehicular access into the car park. There are three other pedestrian access points around the perimeter of the site. Of the two accessible toilets, one is accessible from outside. The main entrance is just three minutes’ walk from Motspur Park station. The K5 bus also stops close by.



Photograph: View from the Car Park

4.8 Management

Merton's Greenspaces service delivery has changed considerably since February 2017. Where once all services were delivered in house now the grounds maintenance and operations are now delivered by a private contractor: idverde. A small team remains within The London Borough of Merton Greenspaces Team delivering Capital investment, Site development, Events and Arboricultural management. The current team structure is outlined in Appendix 7.

The Greenspaces Manager (Doug Napier) is the service head and oversees the ongoing development of the service and its performance. The service manages over 110 separate open spaces. The Greenspaces Manager and the rest of the team oversee the idverde contract. The main duties of idverde include litter picking, sports pitch preparations, pavilion cleaning and parks locking, amongst other tasks.

The Greenspaces Manager line manages two parks development officers who are primarily involved in the delivery of the parks capital investment programme and for the upkeep and replacement of the parks infrastructure: footpaths, gates, signs, bins, fences, etc.

There is also a professional events officer and two professional arboricultural officers whose duties and responsibilities include the support of activities and conditions in Sir Joseph Hood MPF and all other open spaces. Both the development and repair works and the arboricultural works are mainly undertaken by specialist contractors commissioned by, and reporting to, the relevant professional officers. The events role is mainly concerned with providing support and advice, especially in relation to safety, for small-scale outdoor events produced by the local community groups, at least insofar as the area is concerned as the capacity for larger events (fun fairs, circuses, faith group festivals and the like), is more limited there. Two officers in the team have considerable practical experience of ecological issues and the Warden of

Mitcham Common, also employed within the team, is an additional biodiversity knowledge resource that is employed across the service.

The park formally opens at 8am and closes (the gates are securely locked by idverde staff) at or about dusk, unless there are lettings in the park. Under the revised operational arrangements, staff are present in the park on most midweek days due to a combination of the park's Key Park status (with daily commitments in terms of litter collection and condition inspections allied to that) and the work commitments required to prepare the various pitches on site (football, cricket) which, together, ensure that the sporting elements of the grounds upkeep is a year-round operation in itself. At weekends, the popularity of the site for lettings and sport also ensures that there is a regular idverde staff presence. Idverde also attends the park in support of the various evening lettings that the pavilion attracts. Overall, the staff establishment is estimated at 2 FTEs, albeit that none is actually allocated to the park specifically under the revised operational arrangements now adopted.

4.9 Stakeholders and community involvement

LB Merton works collaboratively with a wide range of partners and stakeholders in the development, improvement, maintenance and management of Sir Joseph Hood including: the Friends of SJHMPF; national, regional and local environmental agencies, various funding agencies and the various users and hirers of the site's facilities.

The Friends of Sir Joseph Hood has been involved in the development, improvement, maintenance and management of site since their formation in 2003. This involvement has included:

- Developing priorities for site improvements;
- Completing funding applications
- Organising local fundraising for site investments;
- Regular management and maintenance tasks (e.g. graffiti removal, opening toilets);
- Supporting volunteers in various activities (replanting playground, clearing tennis courts and organising events);
- Maintaining site notice boards and liaising with the local community on issues and projects
- Operating a café during the summer months particularly whilst the paddling pool is open (50% of the profits for the café are re invested towards improvements to the playing field)
- Attending park "Friends" forums

4.10 Activities & Events

Sir Joseph Hood MPF is one of Merton's most popular and frequently used open spaces. The site supports a number of recreational events and activities year-round.

Football takes place there on almost every weekend in the appropriate season and the site represents the home venue for a number of local clubs as well as being the home venue for Raynes Park Little League catering for football for both boys and girls aged between 7 and 12.

On some Saturdays during the summer months Wimbledon Hawks Aussie Rules FC can be seen playing their home games at the ground. Their matches attract large crowds of interested onlookers who are drawn in by the sheer enthusiasm of this activity.

The pavilion within the park is also extremely busy with a range of activities occurring there that support the local community's sporting and other recreational needs as outlined in Sections 4.10 & 4.12 above. Activities occur both during the day and often in the midweek evenings with indoor children's play being a major service offer, albeit these are provided by organisations from outside of the local authority. The addition of a small community space recently developed within the building adds to the opportunities available for use as a classroom or meeting room.

The playing field is used by Sacred Heart School for their annual sports day. Children from the local schools can be seen regularly in the park on field trips around the meadow and the woodland in particular.

There are regular Friends of SJHMPF events in the park, during the summer months holding open days and celebrations of Green Flag achievements this gives them great opportunity to showcase their past and present efforts and encourage new membership and strengthen interest in their local park. Such events make the offer of free crazy golf, tennis coaching, fitness coaching and guided tree walks and talks. Activities during the winter period have focused on bulb planting efforts, involving the local school children, all with the full support of the Council. The Friends meet at other times of the year to discuss parks issues and hold their AGM in the pavilion.

4.11 Leases and Covenants

Sir Joseph Hood Memorial Playing Field is owned by Merton Council and is managed by the Greenspaces Team of the Environment & Regeneration Department.

The property was transferred by way of a conveyance dated 24 October 1935 between Dame Roney and the Urban District Council of Merton and Morden. The land transferred is shown on the plan attached to the conveyance dated 28 January 1935.

The land was transferred with the full right for the Council and its successors in title and people authorized by it to have access to the land. The conveyance is subject to a number of covenants. The most important being:

The Council will maintain the property as a playing field and recreation ground.

The property also has the benefit of a Deed of Grant dated 18 February 1935, which was assigned to the Council by Dame Roney by way of a conveyance and assignment dated October 1935. The London Borough of Merton holds all plans and additional information.

The property is not registered and is not affected by a caution against first registration of any priority notice.

There are no entries in the Register of Common Land.

There are no entries in the Register of Town and Village Greens.



5 Vision for Sir Joseph Hood Memorial Playing Field

The vision for Sir Joseph Hood Memorial Playing Field reflects Merton's corporate vision for its parks and open spaces:

"To encourage healthier lifestyles, strong inclusive communities and an appreciation of nature through the provision of an attractive, high quality space with facilities that are modern, safe, clean, sustainable and accessible to all".



Photograph: Bug Hunt at the Millennium Woodland

Sir Joseph Hood Memorial Playing Field is an excellent example of a community park. The existing responsive management arrangements encourage an active interest and involvement from the local community. Working relationships with our stakeholders including the Friends ensure enthusiastic participation in fundraising, management, and restoration of park features. Our community partners have been involved in horticulture, species protection and heritage restoration projects and directly involved in promoting this unique place to other members of the community.

Merton Council values the imagination, enthusiasm and actions of the Friends who have encouraged community involvement and volunteer activities, raised funds for new equipment and facilities and lobbied for new and responsive management initiatives and practices.



Photograph: Green Flag Open Day at SJHMPF

6 Aims, objectives and management actions

This section presents the aims and objectives for Sir Joseph Hood from 2016- 2021. The format of this section of the management plan has been closely aligned to the key criteria used to assess parks and open spaces as part of the Green Flag Award, which the Council aspires to achieve, and covers the current status and assets/features of the open space and recent developments and investments. A number of management objectives have been developed based upon the management's assessment of the current condition of the park and to assist the management team and stakeholders to achieve the vision for the park.



Photograph: Little League Trials at Sir Joseph Hood MPF

The management actions that follow the objectives describe how we will allocate funding and resources and monitor our progress toward achieving our vision.

The key Green Flag criteria are:

Creating a Welcoming Space

Ensuring the Park is Healthy, Safe and Secure

Keeping the Park Clean and Well Maintained

Sustainable Management of Resources

Appropriate Management of Conservation and Heritage Features

Encouraging Community Involvement

Marketing the Facility Effectively

Implementation of Effective Management Strategies

The vision and objectives for the playing field are aligned with the Merton Partnership's Community Plan, the Council's corporate business plan objectives and the Merton Open Space Strategy and its desired outcomes.

The management actions described in the following section include likely timeframes, responsibility for implementation, cost estimates and funding sources. Most of the management plan objectives have specific actions against them. In some cases the objective relates to how we work.

This information will be reviewed regularly and is expected to evolve as opportunities arise.

(Note: N/A in Action Plans = Funding not currently assigned or clarified)



Photograph: Future cricket stars train at Sir Joseph Hood MPF

6.1 Creating a Welcoming Park

The overall impression for someone approaching and entering the site should be positive and inviting.

Features of particular importance are:

*Good and Safe Access
Effective signage to and in the park; and
Equal access for all members of the community*

Current Condition and Issues

Sir Joseph Hood Memorial Playing Field's location is accessible to the West Barnes and wider community using a variety of transport modes. There is a parking area for 39 cars within the park grounds accessible from Marina Avenue. Visitors travelling by rail on South West Trains have a 5-minute walk from Motspur Park Station. The nearest bus stops, towards either Raynes

Park or New Malden are approximately five minutes walk from the main entrance. Bus route K5, which services the Playing Field, only runs between 0700 and 2000 at a frequency of one per hour, Monday to Saturday. However, an expanded bus priority network borders the local area.

A pedestrian crossing on West Barnes Lane, near the junction with Marina Avenue, allows safe access to the main entrance to the Playing Field. Pedestrians can enter the park through 2 entrances. The main entrance, off Marina Avenue is attractively presented with mature trees and the newly planted shrub beds. There is also pedestrian access on the eastern boundary of the site via the adjacent Morden Cemetery and on the southern boundary from Worcester Park.

To ensure visitors know where they are and what is available there are currently 3 main interpretive panels and a Friends notice board in the park. These signs provide a map of the site with facilities and features of interest, policies on litter, dogs, and motorcycles in the park and contact details. The Friends' Notice Board provides information about matters affecting the playing field and information on the site's history, flora and fauna. The Playground has separate signage informing users on the playground's age restrictions and safety precautions.

Tarmac footpaths link all areas and points of interest in Sir Joseph Hood Memorial Playing Field. The sporting facilities, horticultural areas and features of biodiversity importance are all accessible to varying degrees for visitors with pushchairs or those in wheelchairs or with other mobility impairments. Pedestrian access was re-established to the Memorial Wood from the main playing field in 1990. The path system in the woodland is bark and may be difficult to access by some users during winter months. Sealing this walkway would not be within the principles of the Conservation Management Plan.

Good quality benches and waste bins are located conveniently around the site. Funding is available from the Council's special fund for implementing the Disability Discrimination Act (DDA) to ensure the buildings in Sir Joseph Hood Memorial Playing Field and other parks are accessible and that appropriate facilities for people with disabilities are available.

The northwest side of the local area forms part of a cycle route running across the centre of the Borough. (info Merton cycle network).

In 2007 approval was given to implement a new cycle route through the park. This now includes a 3m shared use path around the site with appropriate signage. This was funded by Transport for London and assisted by Sustrans. In 2008 The Highways Department produced a public realm strategy. An important theme explored by the study includes: Removing unnecessary clutter and improving signage throughout the area. New signage is proposed near all the main train stations in Merton. The nearest station to Sir Joseph Hood MPF is Motspur Park. A map showing the local area is now displayed there.

Objectives

1. Maintain boundary fencing, hedging, gates and access paths to a consistently high standard.
2. Improve signage in the surrounding neighbourhood to the park and provide more directional and interpretive signs within the park.

3. Meet the accessibility requirements of all users.
4. Provide everybody with a range of high quality, well maintained and relevant facilities that are accessible, safe and clean.

Management actions

#	Description	When	Who	Budget (£000)	Source	Secured
Objective 1. Maintain boundary fencing, hedging, gates and access paths to a consistently high standard						
1a	Replace old chainlink fencing along boundary between the car park and tennis courts	2005/06	Contractor	9K	S106	Complete
1b	Replant Privet hedge at perimeter of tennis courts and crazy golf	2008	In house	0.25K	Revenue	Complete
1c	Peg grid and reseed parking bay area	2010	In house	5K	Revenue	Complete
1d	Paint garage door	2010	In house	0	Revenue	Complete
Objective 2. Improve signage in the surrounding neighbourhood to the park and provide more directional and interpretive signs within the park						
2a	Work with Transport for London (TFL) to provide directional information at Rail Stops	Ongoing	In house	NA	Revenue	Complete
2b	Install signage in surrounding neighbourhood leading to Sir Joseph Hood Memorial Playing Field and near Motspur Park and Raynes Park Stations	Ongoing	In house	1K	Revenue	Yes
Objective 3. Meet the accessibility requirements of all users						
3a	Tarmac footpath improvements and responding to tree root damage	Ongoing	Contractor	5K	Revenue	Complete
3b	Extend car park to create an overflow area using "grass crete" paving, and mark out disabled bays	2007	Contractor	10K	Capital	Complete
3c	Installation of new cycle route through park and install cycle racks	2007/08	Contractor	80K	Transport for London	Complete
3d	New handrails and disabled access to woods	2008	Contractor	1K	DDA	Complete
3e	Improvements to main entrance	2015	Contractor	£35k	Capital	Complete

#	Description	When	Who	Budget (£000)	Source	Secured
Objective 4. Provide everybody with a range of high quality, well-maintained and relevant facilities that are accessible, safe and clean						
4a	Redevelopment of Toilets to make accessible for people with disabilities and for children. Signage, seating, lighting and internal improvements to toilets and installation of internal and external accessible toilets	2005/06	Contractor	57K	DDA	Complete
4b	Provision of seating throughout Playing Field	2005/06	Contractor	5K	Capital	Complete
4c	Trim Trail and Signage	2005/06	Contractor	10K	Norlands Foundation	Complete
4d	Refurbishment of 4 Tennis Courts (Tarmac and Fencing)	2006/07	Contractor	45K	Marathon Trust and Capital	Complete
4e	Refurbishment of 2 Tennis Courts for dual use (Tarmac, fencing, markings, gates, and provision of basketball)	2006-08	Contractor	38K	Capital	Complete
4f	Bowling Green to be turned into a crazy golf area following further consultation with the Friends of SJHMPF	2006-08	Contractor	30K	Capital	Complete
4g	Install new fencing and basketball goals in multisport area	2007/08	Contractor	35K	Marathon Trust	Complete
4h	Install new planters on Crazy Golf Area	2007/08	Contractor	5K	Capital	Complete
4i	Install 2 new swing seat bays to replace ones at end of useful life and replace 8 swing units	2009/10	Contractor	22K	Capital	Complete
4j	Play Pathfinder Play Works	2009/10	Contractor	60K	Play England	Complete
4k	Install New Windows on Pavilion	2009/10	Contractor	10K	Capital	Complete
4L	Repair car park	2009/10	Contractor	8K	Capital	Complete
4m	Knock through two rooms and turn into one large community use space	2010/11	Contractor / In house	10K	Capital	Complete
4n	Replace windows at back of building	2010/11	Contractor	3.5K	Capital	Complete
4o	Remove railing next to pavilion and repair tarmac edging	2010/11	In house	4K	Capital	Complete

4p	Replace polycarbonate panel on graffitied sign by entrance near pony fields	2010/11	In house	NA	NA	Complete
4q	Replace tactile sign on ladies toilet	2010/11	In house	NA	NA	Complete
4r	Refurbishment of kitchen	2011/12	In house	6.5K	Capital	Complete
4s	Refurbish paddling pool	2011/12	Contractor / In house	15K	Revenue/ Capital	Complete
4t	Refurbish crazy golf area	2011/12	Contractor / In house	5K	Capital	Complete
4u	Install new gates on main entrance as close to original style as possible	2012/13	Contractor	5K	Capital	Complete
4v	Annual refurbishment of paddling pool	2014/15	Contractor	4k	Revenue	Complete
4w	Improve drainage	2014/15	Contractor	5k	Capital	Complete
4x	Remark parking spaces in car park	2014/15	Contractor	0.5k	Revenue	Partially complete
4Y	Entrance improvement works	2015/16	Contractor	£35k	Capital	Complete
4Z	New outdoor Gym Equipment	2017/2018	Contractor In house	£20k	Capital	Complete
5a	Car Park improvements	2018/19	Contractor	£20k	Revenue	Complete
5b	Welcome signage bottom entrance	2019/20	Contractor	5k	Capital	Complete
5c	Welcome signage top entrance	2020	Contractor	5k	Capital	Complete

6.2 A Healthy, Safe and Secure Park

The park or green space must be a healthy, safe and secure place for all members of the community to use. Relevant issues must be addressed in management plans and implemented on the ground. New issues which arise must be addressed promptly and appropriately. Particularly important issues include:

- *Equipment and facilities must be safe to use;*
- *The park must be a secure place for all members of the community to use or traverse;*
- *Dog fouling must be adequately dealt with;*
- *Health and safety policies should be in place, in practice and reviewed; and*
- *Toilets, drinking water, first aid, public telephones and emergency equipment where relevant (e.g. lifebelts by water) should be available on or near the site and clearly signposted.*



Photograph: Paddling pool at Sir Joseph Hood MPF

Current condition and issues

Merton has developed the Sport, Health and Physical Activity Strategy to provide a plan that encourages healthier communities through getting involved in sport.

Active participation in sport, health and physical activity contributes to:

- Developing sporting, health and fitness skills for children young people and adults;
- The enjoyment of life in the borough;
- The health fitness and well-being of our community.

The Sports and Physical Activity Strategy sets out the Council's plans to:

- Improve opportunities in sports, health and physical activity for those people not activity involved in an average of 3 x 30 minutes of physical activity per week;
- Increase the number of people regularly volunteering at least one hour per week in support of sport and active recreation.
- Raise standards and improve participation in PE and sport in Merton's schools;
- Raise standards and improve young peoples' participation in out of school sports and physical activities;
- Improve the health of the community through our actions in improving sport and active recreation opportunities;
- Target our resources to achieve our stated aims.

SJHMPF is an important borough facility where Merton Council can promote healthy living through the practical provision of new facilities and the continuing

improvement and maintenance of existing equipment. The provision of sports and play facilities and the trim trail is complemented with the many informal recreational uses that occur in the park. Dog walking, nature walks, links into the cycle network all play a role in encouraging healthy living in the area.

Idverde and the Greenspaces Development team play a significant role in the ongoing safety and security of the open space. An ongoing staff presence in the park at peak times is important to develop and maintain links to the local community and to discourage vandalism and anti-social behaviour. The Support Team are also responsible for administering the charging regime for the tennis courts and crazy golf.

In conjunction with the Friends of Sir Joseph Hood Memorial Playing Field and other partners, Merton Leisure Services has invested considerable resources into the improvement of the facilities within the playing fields to meet community needs and provide a public space that safe, secure and enjoyable to visit.

The most sustainable solution for future safety and security in the park is to ensure that Sir Joseph Hood Memorial Playing Field is a well-used and respected facility. With trained on site staff and sensible management of planting and trees, LBM can provide a safe and secure facility for the local community. Incorporating the local knowledge and expertise of our partners is essential to ensure effective management and development of the park. Our partners in this goal include:

- The Friends of Sir Joseph Hood Memorial Playing Field (reporting vandalism, some graffiti removal & work days)
- Local Metropolitan Police Beat Manager
- LB Merton Street Wardens
- LB Merton Tree Wardens

Involvement and respect between managers, users and enforcement agencies is very important for the continued effective management and enjoyment by all.

Equipment, facilities and park infrastructure are of high quality and are inspected regularly (see Inspection and Maintenance Regime – Appendices 1 & 2) by park staff to ensure their safety for users. Trees are regularly inspected visually by park staff on patrol. Following stormy weather all trees are checked by park staff to identify risk from damaged limbs.

The condition of footpaths, waste bins, benches, planting and fencing are inspected four times a year by parks supervisors and parks staff. The condition of seats, litterbins, etc is undertaken on a regular basis by parks staff. Unsafe facilities are repaired or replaced immediately to ensure user safety and discourage vandalism.

Management systems

The Council's tree data and management history is now managed exclusively in Easy TREEV, for example. A new lettings management system has recently been procured and is now in use, and there are also in-house corporate systems for recording and tracking enquiries and complaints, coordinated by a small team in the Council's Corporate Governance section.

Due to the high number of visitors, and the large number of partners working visibly within the park, security in the park has improved remarkably in the past few years. There are however, minor problems with graffiti and vandalism that occur occasionally. These events often occur outside normal visiting hours. There is limited natural surveillance from properties along the northern edge of the Playing Field.

As part of London Borough of Merton and Idverde, Sir Joseph Hood Memorial Playing Field has a Health and Safety policy displayed in the Park Office. Risk assessments and the Health and Safety Policy are available to view at the Hillcross Depot.

Idverde has its own internal H&S and risk assessments which are made available to their respective staff.

Within the Idverde there is a programme of staff induction and training that includes:

- Chainsaw use
- Pesticides use
- First aid
- Safe operation of machinery
- Water safety
- Customer care
- Manual handling
- Dispute resolution

Dog walking is a major activity in Sir Joseph Hood Memorial Playing Field and the Council wishes to encourage responsible dog ownership across the borough. The policy of London Borough of Merton has been to treat dog waste as separate rubbish. However, we now integrate dog waste into general waste, allowing dog owners to use any of the park bins for their (bagged) dog waste. Information regarding the Council's dog policies is displayed in the park on the main signs.

The children's play area is a designated dog free area.

Information for emergency contact, public telephones, hospital, and local services is provided on the main park signage and the Merton website.

London Borough of Merton is responsible for the public toilets in the park. Male and female toilets are located inside the pavilion. There are also toilets accessible from outside. These include children's toilets and an accessible toilet for disabled visitors. The toilets are opened during the 6 summer months and when required for events in the park by the Friends.



Photograph: Metropolitan Police on patrol at Sir Joseph Hood MPF

Objectives

5. All park facilities and features to be maintained providing a safe, secure and inclusive space.
6. Work with local residents, parks staff, police and other stakeholders to increase informal surveillance of the park and enforce park byelaws.
7. Address all safety issues promptly and effectively through timely monitoring and reporting.
8. Encourage responsible dog ownership through education and active enforcement by park staff.
9. Enforce safe working practices to protect all park staff and visitors.
10. Implement the Health and Safety Policy.

Management actions

#	Description	When	Who	Budget (£000)	Source	Secured
Objective 5. All park facilities and features to be maintained providing a safe, secure and inclusive space						
5a	Refer to Tennis court works	Refer Actions 17 & 18 Section 6.13				

5b	Improved maintenance of the walking route through the Memorial Wood & handrails on bridges.	2007/2008	LB Merton and Friends	2K	Revenue	Complete
5c	Establish security of the site with regular assessment of site fencing and prioritise improvements to address illicit entrance points.	2007/2008	LB Merton	3K	Revenue	Complete
Objective 6. Work with local residents, parks staff, police and other stakeholders to increase informal surveillance of the park and enforce park byelaws.						
6a	Implement Park Watch Diaries in the local community	2006/07	Friends	0	NA	
6b	Enforce no motorbike byelaw	Ongoing	Police and Support Staff	0	NA	
Objective 7. Address all safety issues addressed promptly and effectively through timely monitoring and reporting						
7	Implementation of the Confirm System (Computerised Parks Management Tool)	Ongoing	In house	E Govt	Capital / Revenue	Ongoing
Objective 8. Encourage responsible dog ownership through education, provision and maintenance of dog bins, and active enforcement by park staff;						
8a	Implementation of the traffic light dog control system in the park	2006/07	Park staff	NA	Revenue	Ongoing
8b	Consult with Environmental Services on feasibility of on-the-spot fines for dog control violations	March 2013	LB Merton	NA	Revenue	Yes
Objective 9. Enforce safe working practices to protect all park staff and visitors						
9a	Apply & enforce health and safety & CHAS policies (see Appendix 5); review and update relevant operational risk assessments and practices	Ongoing	In house	NA	Revenue	Yes
Objective 10. Implement the Health and Safety Policy						
10a	Health & Safety Policy: distributed to staff and on the internet.	Ongoing	In house	NA	Revenue	Ongoing
10b	Record & review all health & safety incidents & near misses; provide feedback to corporate health & safety team; provide necessary training/re-training	Ongoing	In house	TBC	Revenue	Yes
10c	Provide relevant training for staff	Ongoing	In house	TBC	Revenue	TBC

6.3 Clean & well maintained park

For aesthetic as well as health and safety reasons issues of cleanliness and maintenance must be addressed, in particular:

- *Litter and other waste management issues must be adequately dealt with;*
- *Grounds, buildings, equipment and other features must be well maintained; and*
- *A policy on litter, vandalism and maintenance should be in place, in practice and regularly reviewed.*

Current condition & issues

Sir Joseph Hood is now classified as one of the Borough's 25 "Key Parks" whose maintenance inputs have hardly been affected by the resource reductions that have affected the service as a whole since April 2011, save for losing its permanent member of staff who was relocated as part of the transformation. Overall, the staff inputs in the park remain in the vicinity of 2FTEs, albeit comprising more mobile worker inputs than in the recent past. The current Greenspaces team structure is included as Appendix 7.

Providing quality parks and open spaces remains a high priority for the Council despite the difficult financial climate. The number of Green Flag Awards secured is one of the Environment & Regenerations Department's current Key Performance Indicators. User feedback since the service restructure was fully embedded has been good and the revised operational approach has coincided with a reassuring increase in the user satisfaction levels as revealed in the annual Residents' Survey: satisfaction with parks rising 3% to 76% in the 2014 survey returns.

Litter & Dog Waste

The Playing Field is used extensively by a variety of groups and individuals and litter is a significant management issue and challenge. Litter bins are emptied 3 times per week by the parks staff as a minimum (twice midweek and once per weekend), more often when staff are deployed in the park to support specific events and lettings. Members of staff also undertake litter picking across the site. Dog waste collection has moved to a new system of integrated rubbish bins in parks, meaning dog owners are permitted to place (bagged) dog waste in any litter bin in its parks and open spaces. Information regarding the Council's dog policies is displayed in the park on the main signs.

Non-green waste generated in the park is disposed of to an off-site waste processing facility.

Green Waste Management

Sustainable waste management is a high priority for the London Borough of Merton, idverde and Sir Joseph Hood MPF has a role in demonstrating its feasibility across the parks network. There is a small green waste collection bay on site. All green waste material that cannot be utilised on site is taken to a local composting facility at Nursery Road Playing Field or to the sub-regional waste processing centre in Beddington.

Maintenance

The Park is maintained to a very high standard. After routine inspections have ensured that the park is safe, secure and tidy, the playing field idverde staff undertake a wide range of maintenance and horticultural operations. These activities are described in more detail on the Maintenance Schedule outlined in Appendix 2. Park staff work regularly with the area grounds maintenance team and other partners and contractors to undertake specific maintenance and refurbishment tasks.

Objectives

11. Ensure high standards of maintenance for play areas, tennis courts, lawns, playing fields, trees and shrubs, user facilities, park features and buildings.

12. Provide adequate facilities for the disposal of visitor's rubbish and dog waste
13. Discourage vandalism and graffiti through education, innovative design of facilities and building community alliances
14. Monitor the maintenance programme to ensure improvements can be celebrated and weaknesses addressed

Management actions

#	Description	When	Who	Budget (£000s)	Source	Secured
Objective 11. Ensure high standards of maintenance for play areas, tennis courts, lawns, bedding areas, trees & shrubs, user facilities & park & water features						
11a	Implement established site, infrastructure & equipment inspection procedures	Ongoing	GS Managers	Minimal - staff time	LBM Revenue	Yes
11b	Ensure all play equipment meets the European Environmental Standard	Ongoing,	GS Develop't	Minimal - staff time	LBM Revenue	Yes
11c	Maintain regular cleaning schedule for the pavilion	Ongoing,	Parks Staff	6	LBM Revenue	Yes
11d	Upgrade & refurbish pavilion as required	Annually by March	GS Develop't	TBC	LBM Capital	Yes/TBC
11e	Annual refurbishment of paddling pool before opening in the summer	Annually by July			LBM Revenue	Yes
Objective 12. Provide adequate facilities for the disposal of visitor's rubbish & dog waste						
12a	Review condition of all bins & replace as required	Annually by March,	GS Develop't	<1	LBM Revenue	Yes
Objective 13. Discourage vandalism & graffiti through education, innovative design of facilities & building community alliances						
13a	Liaise with Metropolitan Police, Safe Neighbourhood Team & LBM Graffiti Team.	Ongoing,	GS Managers	Minimal - staff time	LBM Revenue	Yes
Objective 14. Monitor the maintenance programme to ensure improvements can be celebrated & weaknesses addressed						
14a	Liaise with Friends on implementation of agreed improvements & maintenance	Ongoing,	GS Managers; GS Develop't; Friends	Minimal - staff time	LBM Revenue	Yes
14b	Review all formal monitoring & inspection returns	Ongoing,	GS Managers	Minimal - staff time	LBM Revenue	Yes

6.4 Sustainability

Methods used in maintaining the green space and its facilities should be environmentally sound, relying on best practice according to current knowledge. Management should be aware of the range of techniques available to them, and demonstrate that informed choices have been made and are regularly reviewed. Specifically:

An environmental policy or charter and management strategy should be in place, in practice, and regularly reviewed;

- *Pesticide use should be minimised and justified;*
- *Horticultural peat use should be eliminated;*
- *Waste plant material generated in the park should be recycled;*
- *High horticultural and arboricultural standards should be demonstrated; and*
- *Energy conservation, pollution reduction, waste recycling and resource conservation measures should be used.*

Current condition & issues

Many of Merton's environmental policies with regard to protecting local biodiversity, amenity, air, soil and water quality are contained within Merton's Local Development Framework that recently replaced its Unitary Development Plan (UDP). Over and above this, Merton's corporate vision and objectives underline the importance of environmental sustainability in the achievement of the Council's wider objectives.

Environmental plans & policies

Merton Council's current environmental policies on sustainable resources, energy efficiency, and waste management are in various stages of development or revision.

In order to protect the health of park users, staff and the biodiversity of the park, the Greenspaces team has adopted a general policy to reduce the use of pesticides in the maintenance of all of the parks and open spaces within its portfolio to a minimum. The use of pesticides has been eliminated from all areas of the Sir Joseph Hood Playing Field. Weed growth within the playing field areas is suppressed with hand weeding, hoeing and mulching.

Peat-based composts are not used at Sir Joseph Hood and the Greenspaces team no longer procures peat-based horticultural materials as a matter of policy.

The small volume of green waste from horticultural works (shrub beds and occasional woodland work) is transported to the Greenspaces team's green waste facility at Nursery Road for composting and reuse at other sites if it cannot be reused at Sir Joseph Hood.

Vehicle use in the park and on the playing field is kept to a minimum. The service utilises some electric vehicles within its fleet as these provide a cleaner and quieter alternative to diesel. All park machinery is used correctly and is maintained to a very high standard. Any hazardous chemicals are safely stored in a lock up on site.

Replacement park furniture and fixtures is made from sustainable and recycled resources where available. The emphasis is on maintaining existing facilities to a high standard to avoid waste. Water, electricity and gas bills are closely monitored to ensure leaks and efficiencies are addressed promptly.

Objectives

15. Ensure environmental policies are in place, implemented and reviewed annually.
16. Minimise on-site pesticide use.
17. Recycle all green waste.
18. Review the use of energy, water and other materials on site.

Management actions

#	Description	When	Who	Budget (£000s)	Source	Secured
Objective 15. Ensure environmental policies are in place, implemented and reviewed annually						
15a	Comply with all Council environmental policies & priorities	Ongoing,	All	Minimal - staff time	LBM Revenue	Yes

Objective 16. Reduce on site pesticide use						
16a	Apply team pesticides policy: using pesticides only as a last resort & having considered all other possible management techniques	Ongoing,	GS Managers; Parks Staff	Minimal - staff time	LBM Revenue	Yes
Objective 17. Recycle green waste						
17a	Review local procedures for storage & disposal of green waste generated on site & increase volumes being re- used on site. Consider opportunities to refresh arrangements/facilities as part of proposed park/pavilion reconfiguration	Annually	GS Managers	Minimal - staff time	LBM Revenue	Yes
Objective 18. Review the use of energy, water & other materials on site						
18a	Undertake formal review of all utilities usage on site	Ongoing	GS Managers	Minimal - staff time	LBM Revenue	Yes
18b	Consult with specialist energy & LBM Climate Change Manager on means & methods to reduce energy consumption & wastage and install energy efficiency measures as appropriate Consider opportunities presented by proposed pavilion reconstruction.	Ongoing	GS Managers; LBM Energy & Climate Change Manager	Minimal - staff time	LBM Revenue; LBM Capital	TBC
18c	Installation and re design of interior roof of pavilion to improve insulation and reduce heating costs	2019	Contractor	9K	LBM Capital	Yes

6.5 Conservation & heritage

Particular attention should be paid to the conservation and appropriate management of:

- *Natural features, wildlife and flora;*
- *Landscape features; and*
- *Buildings and structural features*
- *These features should serve their function well without placing undue pressure on the surrounding environment*

Current condition and issues

Although the Playing Field is made up almost entirely of sports pitches as the name suggests, SJHMPF forms an important component of the open land, in public and private ownership, in the Motspur Park area in the west of the Borough. The natural and built features of this landscape provide a sense of place and community to the area and give SJHMPF its unique character.

In the park and surrounding vicinity are a variety of important heritage features including:

- Sir Joseph Hood Memorial Woodland;
- Morden Cemetery;
- Beverley Brook;
- Green Lane;
- Open space character;
- Built features.

The Sir Joseph Hood Memorial Wood, situated on the Western boundary of the Playing Field is a recognised and designated site of nature conservation

importance and forms an important section of the Merton Nature Conservation Walks. The woodlands are managed under the Conservation Management Plan 2007 – 2012 prepared by London Conservation Services Ltd in 2006.

The Objectives of the SJHMPF Conservation Management 2007 – 2012 Plan included:

- To conserve existing biodiversity of the reserve, and enhance it where appropriate
- To conserve the semi-natural woodland habitat;
- To manage the planted woodland to habitat to encourage its development in to a mature woodland.
- To manage the grassland areas to encourage the development of a species rich sward.
- To monitor populations of the reserve's biodiversity to assess progress of conservation management.

To maintain the reserve for the quiet enjoyment and understanding by people.

- To maintain pedestrian access through the reserve in good order.
- To provide information on the ecological value of the reserve.
- To promote the reserve as an education al resource for people of all ages.

This park management plan complements the Conservation Management Plan and will assist in the enhancement, conservation and protection of Sir Joseph Hood Memorial Playing Field and promotion of these features to the wider public. Copies of the Conservation Management Plan can be requested from <http://www.merton.gov.uk/living/environment/naturereserves.htm>.

Objectives

19. Protect and enhance the biodiversity value of the Playing Field, Meadows and Woodlands
20. Conserve the character, design, layout and relationship to surrounding environment of the playing field
21. Educate the public on the habitats, species and features of the nature conservation area of the Playing Field

Management actions

#	Description	When	Who	Budget (£000)	Source	Secured
Objective 19. Protect and Enhance the Biodiversity value of the Playing Field and Meadowland and Woodlands						
19a	Review the Conservation Management Plan	2006/07	In house	NA	Revenue	
19b	Apply team pesticides policy: using pesticides only as a last resort & having considered all other possible management techniques	See Action 2 5.4.3	In house	NA	NA	
19c	Implement and monitor the Conservation Management Plan	Ongoing	In house	NA	NA	
19d	Ensure the inspection regime advises the maintenance programme and highlights opportunities for future park	Ongoing	In house	NA	NA	

#	Description	When	Who	Budget (£000)	Source	Secured
	development.					
19e	10 year coppicing cycle will be implemented in the Millennium Woodland from 2009	2009-12	In house Contractor	NA	NA	
Objective 20. Conserve the character, design, layout and relationship to the surrounding environment of the Playing Field						
20a	Achieved through implementation of this management plan	2005-2020	In house	NA	NA	
Objective 21. Educate the public on the habitat, species and features of the nature conservation area of the Playing Field						
21a	Woodland Education Programme	Ongoing	Tree Wardens	NA	NA	



Photograph: Bug Hunt at the Millennium Woodland and Meadow

6.6 Community Involvement

Park management authorities should actively pursue the involvement of members of the community, with representation of as many park user groups as possible. Management should be able to demonstrate:

- *Knowledge of the user community and levels and pattern of use;*
- *Evidence of community involvement in park management and / or development and results achieved; and*
- *That there are appropriate levels of provision or recreational facilities for all sectors of the community.*

Current condition and issues

Sir Joseph Hood Memorial Playing Field is a community space that provides opportunities for local people to take part in a number of open space activities. The support of local people, user groups, partners and other stakeholders is recognised by the Council as fundamental to the success of the facility as a safe, healthy, clean and sustainably managed open space.



Photograph: Friends recruitment drive at Sir Joseph Hood MPF

There are 4 main stakeholder groups in Sir Joseph Hood Memorial Playing Field.

- The Friends of Sir Joseph Hood Memorial Playing Field
- The Play Groups
- Sports Teams
- Nature Conservation Groups

Merton Council will also, with the assistance of the Friends of Sir Joseph Hood MPF, engage proactively with adjoining land owners and local residents and users of the Playing Field.

The Friends have been involved with:

- Consultation with the LB Merton on Open Space Strategy and future improvement priorities
- Developing funding applications for improvements with LB Merton
- Local fundraising
- Assisting with maintenance including painting, clearing graffiti and updating notice boards
- Regular workdays

Since 2005 the Friends Group in partnership with LBM has been successful at raising funding over £250,000. This has been from the Bridge House Trust Fund, Marathon Trust Fund, TFL and Norlands Foundation. Work has included tennis court improvements new play equipment, basketball goals, fencing and a new trim trail, fencing and shared use paths

In 2007 a wildflower seed mix was sown along the boundary fence adjacent to the cemetery and in the autumns of 2006 and 2007 the friends group planted out 5,000 bulbs within the park. There are also other stakeholders and volunteers in the West Barnes area who are involved in the use, management and promotion of the Playing Field. LB Merton is seeking to further develop partnership opportunities including:

- Royal Borough of Kingston upon Thames
- National, regional and local parks and open spaces, environmental and heritage agencies
- Development organisations and agencies
- Funding Agencies
- Friends Groups
- Councillors
- Recreational and sports organisations
- Private sports facility providers
- Health organisations
- Educational establishments including schools
- Local businesses
- Community and voluntary groups, particularly those for and representing children and young people, older people, the disabled and ethnic minorities
- Police and community safety agencies
- Transport for London
- Sustrans

Merton Council works closely with the police to discourage anti-social behaviour and protect the users and facilities of the park. Improving the coordination, communication and cooperation between different stakeholders in the Park is vital to the success of this management plan. A dedicated forum to encourage closer working relationships between the various user groups could be a useful development.

One such issue that needs addressing by the stakeholders is the need for additional, appropriate, facilities for young people within the park. In order to develop a sustainable and respected facility, young people should be consulted and involved in the process.

Further investigation is required to establish specific use patterns for the Playing Field. The council currently monitors the use and quality of the Little League and football pitches. Additionally, a 2001 study of individual park use across the borough provided detailed information about who the open space users are in the borough and their reasons for visiting or not visiting open space. Use patterns continue to evolve and visitor counts, surveys and other information should be interrogated to provide responsive management and plan future development.

A monitoring exercise was carried out in summer 2011 to show numbers using the paddling pool facility.

Objectives

22. Work closely with existing stakeholders and partners to address local residents' needs, aspirations and concerns and encourage a sense of ownership.
23. Identify potential users and encourage them to participate in the development and management of the park.
24. Consult the wider Merton community about future plans, proposals and current projects in the park.
25. Provide support to the Friends of Sir Joseph Hood Memorial Playing Field to ensure successful grant applications for improvements.
26. Foster closer relationships with local schools and institutions.
27. Encourage a complementary working relationship between the council and community volunteers.

Management actions

#	Description	When	Who	Budget	Source	Secured
Objective 22. Work closely with existing stakeholders and partners to address local residents' needs, aspirations and concerns and encourage a sense of ownership.						
22a	Annual Questionnaire Survey Members of Little League and Football Clubs	Annually	In house	0.5	Revenue	ongoing
22b	Participate in Friends Group Forums & evening meetings	Bi Annually	In house	NA	Revenue	ongoing
22c	Hold an annual Green Flag Event	2008 - 11	In house & Friends	1	Revenue	Complete
2d	Series of 4 workshops for Friends Groups on capacity building, engaging with the community and different group structures, organised with London Parks and Green Spaces Forum.	2013 - 2014	In house and LPGSF	2	Revenue	Complete
Objective 23. Identify users and encourage them to participate in the development and management of the park.						
23a	Questionnaire survey of park users via Friends.	Annually	In house	0.5	Revenue	ongoing
23b	Monitor visitor levels in park and use of tennis courts and other facilities. i.e. paddling pool	Ongoing	In house	NA	Revenue	ongoing
23c	Staff training for public relations	2010	In house	NA	Revenue	Complete
Objective 24. Consult the wider Merton community about future plans, proposals and current projects in the park						
24a	Consultation on Merton Open Space Strategy progress and projects. Reporting to Friends Groups, Press releases, progress update newsletter.	Annually / Ongoing	In house	1	Revenue	
24b	Consultation from Planning Department on the Development of the Local Development Framework	Ongoing	In house	NA	Revenue	
Objective 25. Provide support to Friends of Sir Joseph Hood Memorial Playing Field to ensure successful grant applications for improvements.						
25a	Attend Friends Group Forum to raise awareness about available funding sources and agree a timetable for funding applications.	Biannually	In house	NA	Revenue	

#	Description	When	Who	Budget	Source	Secured
25b	Apply For Play England Funding to refurbish play area based on consultation at Green Flag day	Nov 2008	LBM In House	NA	Play England	Complete Yes
Objective 26. Foster closer relationships with local schools and institutions.						
26a	See Education Action 5 – Section 5.5.3					
Objective 27. Encourage a complementary working relationship between the council and community volunteers.						
27a	Agree projects for Community Payback to deliver on site	2011/12	LB Merton	NA	Revenue / Capital	
27b	Carried out series of seminars for Friends Groups	2014/5	LB Merton	.5k	revenue	completed

6.7 Marketing

Is there:

- *A marketing strategy in place? Is it in practice and regularly reviewed?*
- *Good provision of information to users e.g. about management strategies, activities, features, ways to get involved? and*
- *Effective promotion of the park as a community resource.*

Current condition & issues

Marketing Strategy

The marketing and promotion of Sir Joseph Hood MPF as a local facility and destination is coordinated through the Merton Open Spaces Marketing Strategy (2007). The objectives of this strategy are:

1. To increase usage of parks and open spaces by providing timely and accurate information about, their features, facilities and management;
2. To effectively advertise events in Merton's parks and open spaces and attract other activities appropriate to individual spaces and the surrounding community;
3. To promote positive news about Merton's parks and open spaces to a wide audience;
4. To ensure all parks staff and volunteers receive adequate marketing training;
5. To regularly review customer satisfaction with the condition of the facilities, features and management within the parks.

The Marketing Strategy is implemented across the borough's parks and leisure facilities, through the various Council initiatives, including signage outside of the park, leaflets for potential parks users and pavilion hirers and information on the Council website - the latter being an increasingly important information and promotional vehicle. Word of mouth, PR skills and abilities of the site staff also important in this regard. The Council's 24 parks friends groups produce a number of newsletters to publicise their specific park and a number, including the Friends of Sir Joseph Hood, have developed their own website (see Appendix 4 which also illustrates other current marketing materials).

Marketing of Sir Joseph Hood Memorial PF

Marketing of the Playing Field currently concentrates on effective signage leading potential users to the park and the promotion of specific events and sports facility availability.

Huge improvements have been made to the design and functionality of the Council's website over the last 4 years. The Greenspaces team is committed to taking full advantage of this medium to promote facilities and events in Sir Joseph Hood and other parks and open spaces in the Borough. Active monitoring of website activity provides managers and users with useful feedback to help improve the information posted on the website.

Objectives

- 28. Develop and implement Borough-wide parks marketing strategy.
- 29. Raise awareness of the park, its facilities and services via a variety of media both on and off site.

Marketing actions

#	Description	When	Who	Budget (£000s)	Source	Secured
Objective 28. Develop & implement a Borough-wide parks marketing strategy						
28a	Produce & implement a revised & updated parks marketing strategy as part of the parks "commercialisation" agenda, focusing on key venues/services	Ongoing	GS Manager/ Corporate Marketing Team	Minimal - staff time	LBM Revenue	No
Objective 29. Raise awareness of the park & its facilities & services via a variety of media both on & off site						
29a	Promote successes (e.g. Green Flag Award) & community events in local media & Council publications such as "My Merton"	Annually	In house	Minimal - staff time	LBM Revenue	Yes
29b	Re-distribute copies of the existing "Merton's Parks and Nature Conservation Areas" leaflet to key information points in the Borough (e.g. libraries, community centres)	Completed 2011	GS Support Team	Minimal - staff time	LBM Revenue	Yes
29c	Continue to update Friends notice board & other information boards in & around the playing field	Ongoing,	Friends; GS Managers	Minimal - volunteer & staff time	LBM Revenue	Yes
29d	Continue to develop the Friends website & relevant pages of Council website	Ongoing,	Friends; GS Support Team	Unknown/ Minimal - staff time	Revenue	Unknown /Yes
29e	Promote the availability of the new community room for all types of hire	Ongoing,	In house	NA	Revenue	



6.8 Management

A Green Flag site must have a management plan. It must set out the balance between all the priorities, policies and partners that apply to a particular green space. It should establish a timescale for putting the objectives into practice. It should also identify the contribution the site is making towards an area's wider strategic aims. It must be actively implemented and regularly reviewed.

Current status & issues

The current Greenspaces Service structure was substantially revised during the course of 2011 in order to address some very substantial in-year budget cuts that in total comprised in excess of £400k. The service delivery on the ground was especially affected, with operations across all sites examined in some detail and rationalised where possible. A hierarchy of parks was established for the first time creating 25 “Key Parks” that included Sir Joseph Hood MPF, whose high maintenance standards were, in broad terms, preserved.

Parks Management

Merton's Greenspaces service delivery has changed considerably since February 2017. Where once all services were delivered in house now the grounds maintenance and operations are now delivered by a private contractor: idverde. A small team remains within The London Borough of Merton Greenspaces Team delivering Capital investment, Site development, Events and Arboricultural management. The current team structure is outlined in Appendix 7.

The Greenspaces Manager (Doug Napier) is the service head and oversees the ongoing development of the service and its performance. The service manages over 110 separate open spaces. The Greenspaces Manager and the rest of the team oversee the idverde contract. The main duties of idverde include litter picking, sports pitch preparations, pavilion cleaning and parks locking, amongst other tasks.

The Greenspaces Manager line manages two parks development officers who are primarily involved in the delivery of the parks capital investment programme and for the upkeep and replacement of the parks infrastructure: footpaths, gates, signs, bins, fences, etc.

There is also a professional events officer and two professional arboricultural officers whose duties and responsibilities include the support of activities and

conditions in SJHMPF and all other open spaces. Both the development and repair works and the arboricultural works are mainly undertaken by specialist contractors commissioned by, and reporting to, the relevant professional officers. The events role is mainly concerned with providing support and advice, especially in relation to safety, for small-scale outdoor events produced by the local community groups, at least insofar as the area is concerned as the capacity for larger events (fun fairs, circuses, faith group festivals and the like), is more limited there. Two officers in the team have considerable practical experience of ecological issues and the Warden of Mitcham Common, also employed within the team, is an additional biodiversity knowledge resource that is employed across the service.

The park formally opens at 8am and closes (the gates are securely locked by idverde staff) at or about dusk, unless there are lettings in the park. Under the revised operational arrangements, staff are present in the park on most midweek days due to a combination of the park's Key Park status (with daily commitments in terms of litter collection and condition inspections allied to that) and the work commitments required to prepare the various pitches on site (football, cricket) which, together, ensure that the sporting elements of the grounds upkeep is a year-round operation in itself. At weekends, the popularity of the site for lettings and sport also ensures that there is a regular idverde staff presence. Idverde also attends the park in support of the various evening lettings that the pavilion attracts. Overall, the staff establishment is estimated at 2 FTEs, albeit that none is actually allocated to the park specifically under the revised operational arrangements now adopted.

Appendix 7 outlines the overall parks management structure and posts within Merton's Greenspaces team.

Objectives

30. To continue to bid for corporate revenue, capital and Section 106 funding for priority improvements.
31. Ensure sufficient budget is allocated to maintain the park to the standards of this management plan.
32. Encourage greater user ownership and involvement in the facility's management in order to promote more responsible use and sustainability.

Management actions

#	Description	When	Who	Budget (£000s)	Source	Secured
Objective 30. To continue to bid for corporate revenue, capital & Section 106 funding for priority improvements						
30A	Ongoing liaison with LBM S106 Manager to identify existing funds & future opportunities & make bids from S106 schemes	Ongoing,	GS Managers	Minimal – staff time	LBM Revenue	Yes
30B	Continue to keep abreast of developments & opportunities within external funding agencies	Ongoing,	GS Managers	Minimal – staff time	LBM Revenue	Yes
Objective 31. Ensure sufficient budget is allocated to maintain the park to the standards of this management plan						
31A	Monitor and report on Greenspaces revenue & capital budgets and Sir Joseph Hood MPF cost centre	Monthly	GS Managers; GS Support Team; Corporate Finance	Staff time – approx. 100 hours	LBM Revenue	Yes

Objective 32. Encourage greater user ownership and involvement in the facility's management in order to promote more responsible use and sustainability

32A	Produce, consult on & review a SMART park management plan for Sir Joseph Hood MPF that sets out the management actions & development priorities	Annually updates	GS Managers; Friends; Various partners	Staff time – approx.40 hours	LBM Revenue	Yes
32b	Continue to support Friends' Café during the summer months.	Ongoing	GS Managers	Minimal – staff time	LBM Revenue	Yes

7 Monitoring and Plan Review

This management plan has been adopted in 2016 and will act as a working document for the management of Sir Joseph Hood Memorial Playing Fields.

The day-to-day management of the Playing Field and the progress of individual development projects will be monitored regularly with LBM Park Staff, other stakeholders and the Friends of Sir Joseph Hood Memorial Playing Field.

The Action Targets presented in this Management Plan are reviewed annually in October with stakeholders and updated to reflect recent developments. Information and Identified action areas will inform the budget process in December.

A formal review of this management plan was undertaken again in September 2021 when the plan was amended to advance the development and management of the Park until 2026.

8 References

London Ecology Unit (1998) *Nature Conservation in Merton Ecology Handbook* 29

London Borough of Merton (2000) *Sir Joseph Hood Memorial Wood and Millennium Woodland – Conservation Management Plan*

9 Appendices

1. Inspection schedule
2. Maintenance regime
3. Plan of the park
4. Current marketing materials
5. Health and safety policy
6. Park byelaws
7. Management structure
8. Friends activities
9. Climate Change Action Plan

Appendix 1 Inspection Schedule

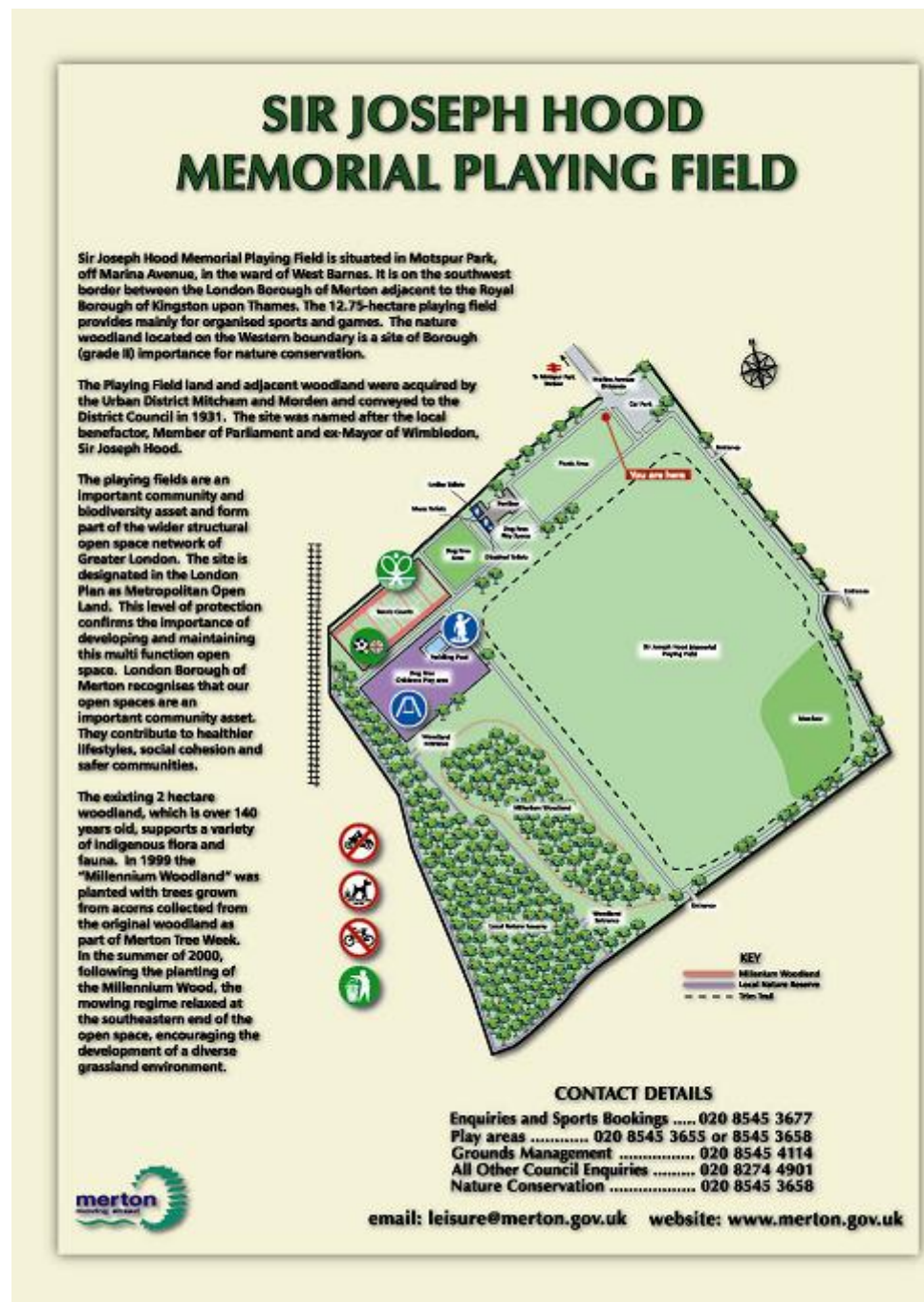
#	Activity	Frequency	Responsibility
1	Daily Condition Assessment		
	Visual inspection of: <ul style="list-style-type: none"> • Seats • Waste bins • Fencing • General condition and presentation of Park and Recreation Ground 	Daily	Idverde
2	Daily Built Feature Assessment		
	Inspect: <ul style="list-style-type: none"> • Pavilions • Report Graffiti, Vandalism, Wear and tear to Technical Services • File Malicious damage reports with Police 	Daily	Idverde
3	Inspect Sign Boards		
	Remove Graffiti Report Vandalism to Park Staff	Weekly	Idverde & Friends Group
4	Quarterly Condition Assessment		
	Thoroughly check the condition of: <ul style="list-style-type: none"> • Footpaths • Waste bins • Benches • Paddling Pool • Shrub bed • Playground • Fencing and gates • Evidence of fires 	Quarterly. Minimum of once during winter months.	Idverde & Friends Group
5	Tree Assessment <ul style="list-style-type: none"> • Full tree survey • Walkover tree assessment 	Every 3 Years Annually	Arboriculture Manager
6	Gas and Electric Checks and Certification	Annually Autumn	Property Manager

Appendix 2 Maintenance Regime (Refer to 6.8 of Management Plan)

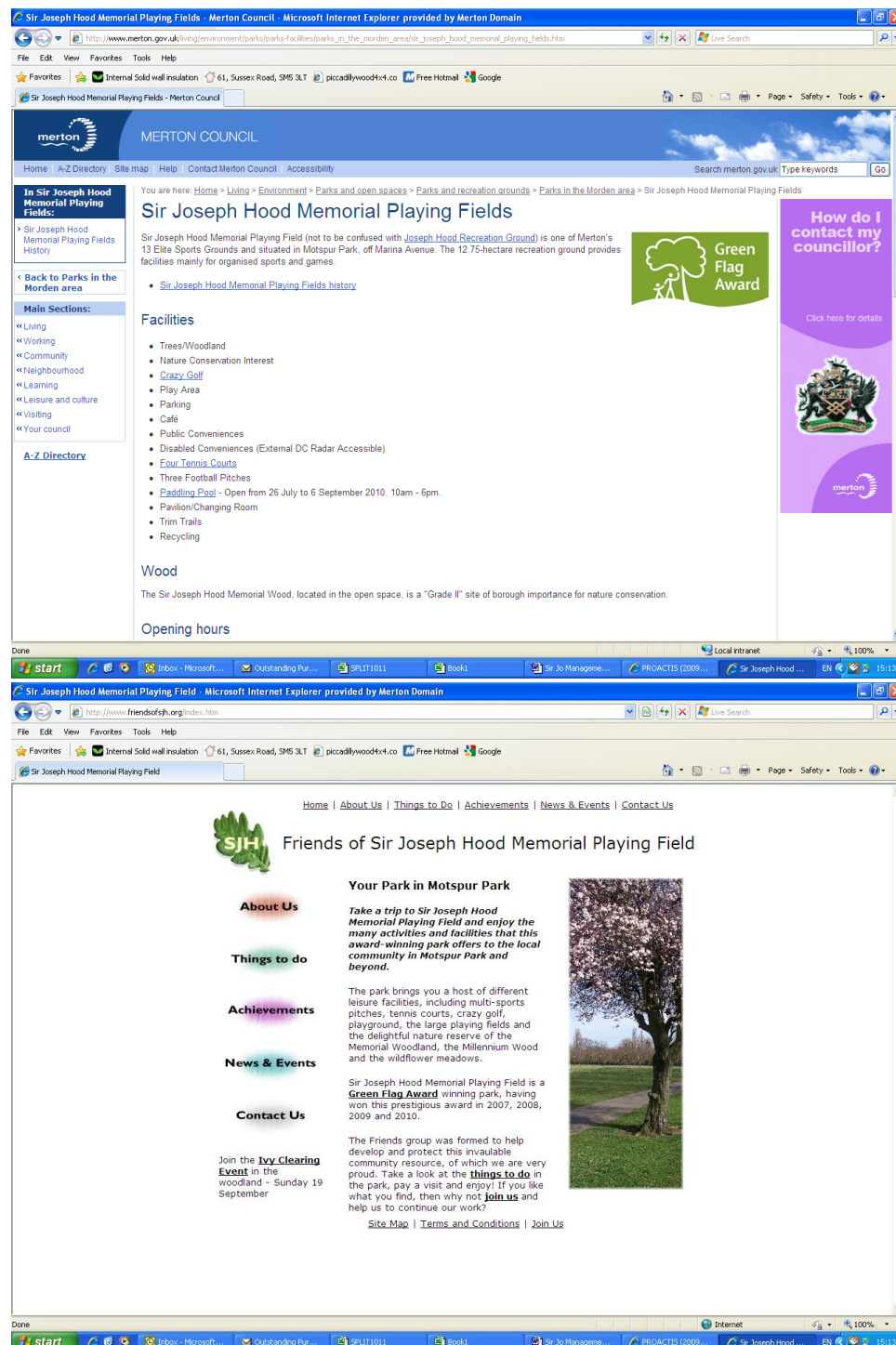
#	Activity	Frequency	Responsibility
1	Play Area and Paddling Pool		
	Carry out visual inspection, report problems and make safe equipment as necessary.	Daily	Idverde
	Remove litter, sweep as necessary	As necessary	Idverde
	Carry out minor repairs of equipment and safety surfacing	As necessary	Idverde
	Cut grass		Idverde
	Pre-season paddling pool maintenance (including painting)	Annually	Idverde
	Cleaning and maintenance during summer	Daily	Idverde
2	Tennis Courts		
	Visual Inspection	Daily	Idverde
	Sweep and Remove Litter	Weekly	Idverde
	Erect Nets, Collect Fees (for specified playing times)	As Required	Idverde
3	Crazy Golf		
	Cut grass	As Required	Idverde
	Remove litter	Daily	Idverde
	Collect Fees	As Required	Idverde
4	Pavilion, Toilets and Staff Accommodation		
	Carry out inspections		Idverde
	Clean Toilets	Daily	Idverde
	Ensure building, changing rooms and hall clean and tidy	Daily	Idverde
	Provide chairs for functions	As necessary	Idverde
	Lock and unlock outside toilets during summer	Daily	Friends Group (under review)
5	Informal Play Area		
	Cut grass, maintain shrub beds weed free.		Idverde
	Clear Litter	3 x per week	Idverde
	Large amenity grass areas	12 x per year	Idverde
6	Local Nature Reserve		
	Maintain as detailed in the Conservation Management Plan	See plan	Nature Conservation Officers
7	Millennium Woodland		
	Maintain as detailed in the Conservation Management Plan	See plan	Nature Conservation Officers

8	Tarmac Paths & Car park		
	Carry out monthly inspection reports, sweep and clear litter as necessary	Monthly	Idverde
9	Picnic Area		
	Cut grass	12 x per year	Idverde
	Litter pick	3 x per week	Idverde
10	Shrub bed		
	<ul style="list-style-type: none"> • Prune shrubs and mulch • Keep weed free • Litter pick • Cultivate border 	Annually	Idverde
11	Football Pitches – Little League		
	<ul style="list-style-type: none"> • Initial mark pitches • Over mark pitches • Relieve compacted areas • Re instate worn areas and goalmouths • Facilitate Little League bookings 	Once Weekly As Required Once As requested	Idverde
12	Football Pitches - Adult		
	<ul style="list-style-type: none"> • Initial mark pitches • Install posts and sockets • Over mark pitches • Relieve compacted areas • Re instate worn areas and goalmouths • Hang/remove football nets • Over seed and top-dress pitch end of season • Remove, clean, paint and store football posts • Facilitate bookings 	Football Season	Idverde
13	Gate Locking /unlocking – Single and Car park gates	2x per day	Idverde
14	Drainage Ditch		
	Clear ditch as necessary	As required	Contractor
15	Interpretive Panel		
	Remove graffiti from sign and up date information	As required	Idverde
16	Hedge cutting		
	Clip hedges as required	2 x per year	Idverde
17	Litter bins - Empty	Daily	Idverde

Appendix 3 Plan of Playing Field



Appendix 4 Marketing Materials

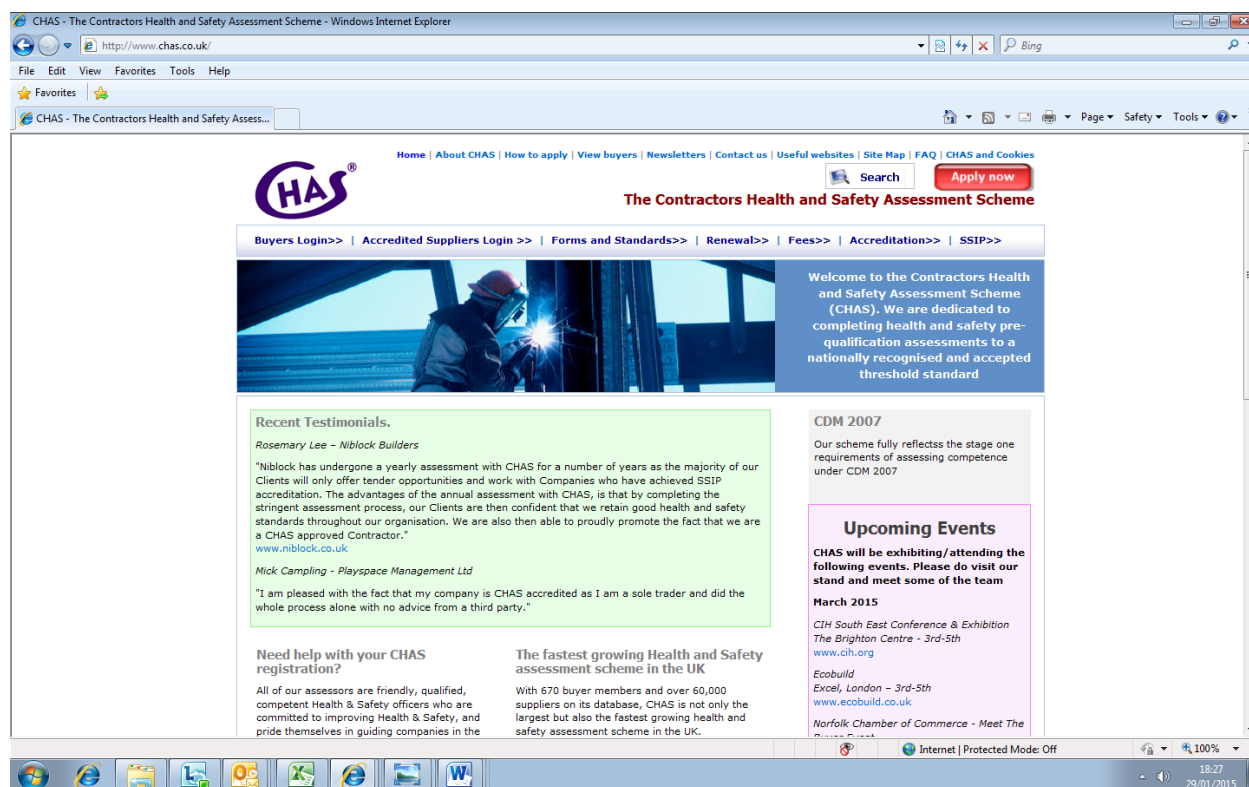


Appendix 5 Health and Safety Policies

LB Merton's health and safety policies are available on the Council's website and are displayed at the service's main operational depot at Hillcross Avenue/Morden Park.

See Internet: www.merton.gov.uk/

The statement of the Director responsible for Health & Safety is posted on the Merton staff intranet at: <http://intranet/docstatementfromdirectorresponsibleforhs.doc> **The Contractors Health and Safety Assessment Scheme (CHAS)** Is available to view at www.merton.gov.uk/chas on the Merton Internet site



Appendix 6 Park Byelaws

LONDON BOROUGH OF MERTON BYELAWS WITH RESPECT TO PLEASURE GROUNDS

Byelaws made by the Council of the London Borough of Merton under section 164 of the Public Health Act 1875. Sections 12 and 15 of the Open Spaces Act 1906 and Section 15 of the Open Spaces Act 1906 with regard to public walks, pleasure grounds or open spaces.

INTERPRETATION

1. In these byelaws:
 - ‘the council’ means the Council of the London Borough of Merton.
 - ‘the pleasure ground’ means the pleasure grounds listed in the attached schedule 1.
2. An act necessary to the proper execution of his duty in the pleasure ground by an officer of the Council, or any act which is necessary to the proper execution of any contract with the Council shall not be an offence under these Byelaws.

OPENING AND CLOSING TIMES

3. On any day on which a pleasure ground is open to the public, provided the pleasure ground is fenced and has lockable gates, no person shall enter it before the time or enter or remain in it after the time appointed.

WALLS, BARRIERS, ETC

4. No person shall in the pleasure ground without reasonable excuse:
 - (i) Climb any wall or fence in or enclosing the pleasure ground, or any tree, or any barrier, railing post or other erection.
 - (ii) Remove or displace any barrier, railing, post, or seat or any part of any erection or ornament, or any implement provided for the use in the laying out or maintenance of the pleasure ground.

CATTLE, SHEEP, GOATS, ETC

5. No person shall except in pursuance of a lawful agreement with the Council, or otherwise in the exercise of any lawful right or privilege, bring or cause to be brought into the pleasure ground any cattle, sheep, goats, or pigs or any beast of draught or burden.

VEHICLES

6. (i) No person shall, without reasonable excuse, ride or drive a cycle, motor cycle, motor vehicle, or any other mechanically propelled vehicle in the pleasure ground, or bring or cause to be brought into the pleasure ground a motor cycle, motor vehicle, trailer or any other mechanically propelled vehicle (other than a cycle), except in any part of the pleasure ground where there is a right of way for that class of vehicle
- (ii) If the council has set apart a space in the pleasure ground for use by vehicles of any class, the byelaw shall not prevent the riding or driving of those vehicles in the space so set apart, or on a route, indicated by signs placed in conspicuous positions, between it and the entrance to the pleasure ground.
- (iii) This byelaw shall not extend to invalid carriages.
- (iiii) In this byelaw:
- “cycle” means a bicycle, a tricycle, or cycle have four or more wheels, not being in any case a motorcycle or motor vehicle.

“invalid carriage” means a vehicle, whether mechanically propelled or not, the unladen weight of which does not exceed 150 kilograms, the width of which does not exceed 0.85 metres, and which has been constructed or adapted for use

“motor cycle” means a mechanically propelled vehicle, not being an invalid carriage, intended or adapted for use on roads

“trailer” means a vehicle drawn by a motor vehicle and includes a caravan.

7. No person who brings a vehicle into the pleasure ground shall wheel or station it over or upon:-
- (i) any flower bed, shrub, or plant, or any ground in course of preparation as a flower bed, or for the growth of any shrub or plant:
- (ii) any part of the pleasure ground where the council by a notice board fixed or set up in some conspicuous position in the pleasure ground prohibit it being wheeled or stationed.

KEEPING OFF THE GRASS

8. No person shall in the pleasure ground walk, run, stand, sit or lie down
- (i) Any grass, turf or other place where adequate notice to keep off such grass, turf or other place is exhibited;
- Provided at such notice shall not apply to more than one fifth of the area of the pleasure ground;
- (ii) Any flowerbed, shrub pr plant, or any ground in course of preparation as a flower bed, or for the growth of any tree, shrub or plant.

PLANTS

9. No person shall in the pleasure grounds remove any soil or plant

ORNAMENTAL LAKES, PONDS, STREAMS ANY OTHER WATERS

10. No person shall in the pleasure ground:-

- (i) Bathe, wade or wash in any ornamental lake, pond, stream or other water or areas set aside for toy boats;

Provided that this byelaw shall not be deemed to prohibit wading in any water which, by a notice set up in a conspicuous position near thereto, shall be set apart by the council for use as a paddling pool or a water activity area.

- (ii) Without reasonable excuse foul or pollute any such water

FISHING

- 11. No person shall without lawful excuse or authority in the pleasure ground kill, molest or intentionally disturb any animal or fish or engage in hunting, shooting or fishing or the setting of traps or nets or the laying of snares.

This byelaw shall not prohibit any fishing, which may be authorised by the council at Cannon Hill Common.

FIRES

- 12. No person shall light a fire in the pleasure ground or place or throw or let fall a lighted match or any other thing so as to be likely to cause a fire. Provided that this byelaw shall not apply to any events held in pursuance of an agreement with the council.

GAMES

- 13. Where the council set apart any such part of the pleasure ground as may be fixed by the council, and described in the notice board a fixed or set up in some conspicuous position in the pleasure grounds, for the purpose of any game specified in the notice board, which, by reason of the rules or manner of playing, or the prevention of damage, danger, or discomfort to any person in the pleasure grounds may necessitate at any time during the continuance of the game, the exclusive use by the player or players of any space in such parts of the pleasure grounds – a person shall not in any space elsewhere in the pleasure ground play or take parting any game so specified in such a manner as to exclude persons not playing or taking part in the game for which the space is used.
- 14. A person resorting to the pleasure ground and playing or taking part in any game for which the exclusive use of any space in the pleasure ground has been set apart shall:-
 - (i) not play on the space any game other than the game for which it is set apart;
 - (ii) in preparing for playing and in playing, use reasonable care to prevent undue interference with the proper use of the pleasure ground by other persons;
 - (iii) when a space is already occupied by other players not begin to play thereon without their permission;
 - (iiii) where the exclusive use of the space has been granted by the council for the playing of a match, not play on that space later than a quarter of an hour before the time for the beginning of the match unless taking part therein;
 - (v) except where the exclusive use of the space has been granted by the council for the playing of the match in which he/she is taking part, not use the space for a longer time than two hours continuously, if any other player or players make known their wish to use the space
- 15. No person shall in any part of the pleasure ground which may have been set apart by the council for any game play or take part in any game when the state of the ground or other cause makes it unfit for use and a notice is set up in some conspicuous position prohibiting play in that part of the pleasure ground.

CHILDREN'S PLAY EQUIPMENT

16. No person who has attained the age of 14 shall use any apparatus in the pleasure ground which, by notice fixed on or near thereto, has been set apart for the exclusive use of persons under the age of 14

GOLF

17. No person shall in the pleasure ground, drive, chip or pitch a hard golf ball except on land set aside by the Council for use as a golf course, golf driving range, golf practice area, pitch and putt course or putting course.

PROHIBITION OF GAMES

18. No person shall play or take part in any game of cricket or football or nay other organised ball game nor use a hard ball in any of the grounds known as Cannizaro Park, John Innes Park, Holland Gardens, Nelson Gardens and South Park Gardens

Provided that this byelaw shall not prohibit the playing of tennis, netball, bowls and putting in parts of the grounds known as Holland Gardens and John Innes Park, which have been set aside for these purposes.

MODEL AIRCRAFT

19. (a) For the purpose of this Byelaw "model aircraft" means an aircraft which either weighs not more than 5kg without its fuel or is for the time being exempted (as a model aircraft) from the provisions of the Air Navigation Order, and "power-driven" means driven by the combustion of petrol vapour or other combustible substances.
- 20.

(b) No person shall –

(i) In the part of the pleasure ground so set apart release any power-driven model aircraft for flight or control the flight of such an aircraft; or

(ii) Cause any such aircraft to take off or land in the path of the pleasure ground so set apart unless it is attached to a control line and is kept under effective control in the grounds and on the days and during the hours specified in the following table

Name of Ground	Days	Hours
Cannon Hill Common	Mondays –Saturdays Sundays	10.00 - 21.00 10.00 - 13.00
Figges Marsh	Mondays, Wednesday and Friday	18.00 - 21.30
Morden Park	Monday – Saturday Sundays	10.00 - 21.00 10.00 - 13.00
Three Kings Piece	Tuesdays & Thursdays Sundays Except on the days when the ground is occupied for the purpose of the Mitcham Fair.	18.00 - 21.30 13.00 - 16.00

DOG PROHIBITED AREAS

21.

- (i) No person (other than a registered blind person) in charge of a dog shall, without reasonable excuse, permit a dog to enter or remain in any of the areas listed in schedule 2 and hereafter referred to as the “dog prohibited area”;
- (ii) Notice of the effect of this byelaw shall be given by signs displayed in conspicuous positions at the entrances to the dog prohibited area;
- (iii) An officer of the council or any constable may require a person in charge of a dog which has entered a dog prohibited area to remove the dog therefrom;
- (iv) For the purpose of this byelaw the keeper of the dog shall be deemed in charge thereof, unless the court is satisfied that at the time when the dog entered or remained in the dog prohibited area it had been placed in or taken into the charge of some other person; and
- (v) In paragraph (iv) above “the keeper” shall include the owner of the dog or any person who habitually has it in his possession

OBSTRUCTION

22. No person shall in the pleasure ground:

- (a) Intentionally obstruct any officer or the council in the proper execution of his duties;
- (b) Intentionally obstruct any person carrying out an act which is necessary to the proper execution of any contract with the council; or
- (c) Intentionally obstruct any other person in the proper use of the pleasure ground, or behave so as to give reasonable grounds for annoyance to other persons in the pleasure ground

PENALTY FOR OFFENCES

23. Every person who shall offend against any of these byelaws shall be liable on summary of conviction to a fine not exceeding level 2 on the standard scale.

REMOVAL OF OFFENDERS

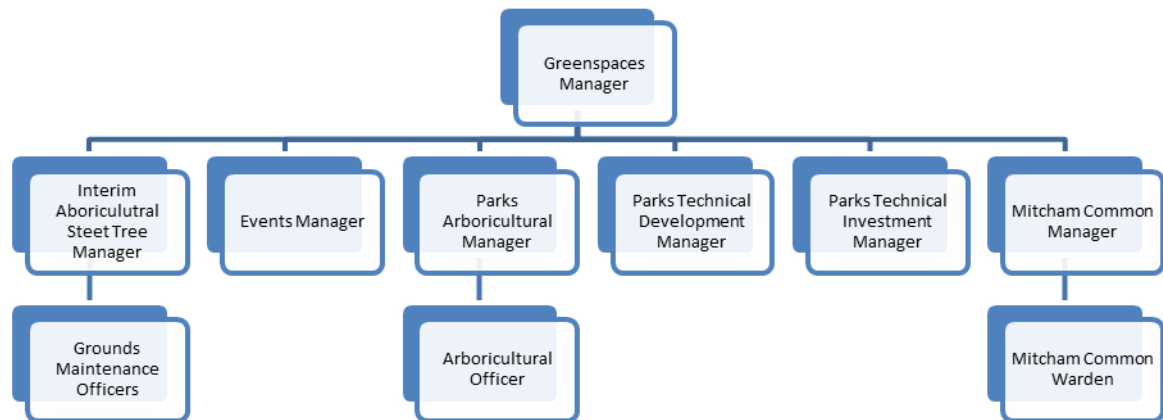
24. Any person offending against any of these byelaws may be removed from the pleasure ground by any other officer of the council or any constable.

REVOCATION OF BYELAWS

25. The byelaws with respect to pleasure grounds made by the council in the 24th day of April 1968, and confirmed by the secretary of state on the 27th day of June 1968 and subsequently amended on the 24th day of July 1975 and the 18th day of February 1983 are hereby revoked.

Appendix 7 Management Structure

LBM Greenspaces Structure



Idverde Staff Structure



Appendix 8 Friends Activities



Photograph: The Bug Hunt

Activities 2006 - 2018

- Successful campaign against Council's decision not to open paddling pools in the summer. Involved petitions from local shops, surgery, schools and support from other friends' groups.
- Day event - celebrating the park as a local Nature Reserve. Involved a children's bug hunt and associated activities, face painting and guided walks through the woodland.
- Outside toilets opened daily by volunteers from Friends' Group.
- £10k grant from Norlands Foundation for trim trail around the park.
- Summer café open during paddling pool season.
- Continued volunteer groups removing graffiti.
- £30k grant from London Marathon Charitable Trust for renovation of tennis courts.
- Consultation with the charity Tennis For Free to set up regular free coaching on the new courts for the local community.
- Daffodil bulbs bought for the park and planted around the main gate and car park.

- Fundraising day to raise money for a new paddling pool



Dog walkers social and dog show 2015

- Volunteers- clearing and planting of garden area in front of main gates.
- Beavers from 22nd Wimbledon Scout Group planting wild flower seeds in park.
- Afternoon of free sporting activities for local children by Futurepro Sports.
- Grant bid to Tesco for tennis equipment and five-a-side goal ends / basketball hoops.
- Grant bids for converting old bowling green area into crazy golf or a sensory garden.
- Sponsored walk around park planned in conjunction with three local schools (in aid of Sport Relief).
- Cheeky Monkeys Playgroup in pavilion 5 days/week.
- Saturday football ground for Raynes Park Little League
- Sunday football
- 25k bid approved for basketball courts to London Marathon Trust
- Meeting with Groundwork Merton to discuss landscaping the land around the basketball courts. Currently developing an action plans (Nov 08)
- Meeting with Laura Harvey about putting on school holiday sports activities in the park.
- More bulb planting (Nov 08)
- Summer café and Sunday morning winter café.

- 22nd Wimbledon Scout Group Open Day in park (Sept 08)
- Guided walk through the woodland with Dave Lofthouse (Burntwood School 6th Form and local Beaver group June and July 08)
-
- Alf Acott Award for 2008 awarded to James and John Brevitt, James Holligan and Zak Crandley for obtaining Youth Opportunities funding for basket ball courts (June 08)
- Community open day with children's woodland trail (June 08)
- develop our website
- Work with local schools (Raynes Park High School (March 09)
- Community day to clear ground ivy in woodland (Spring 09)
- Ensuring continued high level of usage of tennis courts and crazy golf by maintaining low prices
- Introduction of Aussie Rules Football to the site during the summer months
- Machine planting of thousands of daffodils on edge of meadow (Nov 09)
- Outdoor table tennis
- Year 1 Play pathfinder Play Area Refurbishment
- Developing the pavilion to provide more useable space for community activities and to allow holiday sports coaching to take place in the park
- Develop action plan with Groundwork Merton to landscape land around the basket ball area
- Apply for grants for above plans
- Construction of a wildlife pond on edge of Millennium Wood
- Cafe run by Friends during the summer - 2013 and 2014. Profits put back into park
- Tree planting around the car park in Jan 2014 and added to in Jan 2015
- Hanging baskets planted for park pavilion in 2013 and 2014. Regularly maintained / re-planted
- Collaboration with 'Rascals' soft play group who hire the pavilion to enhance park security and ensure vehicular access gates are opened each morning; the outside public toilets are opened and closed each day; maintenance of the pavilion garden.
- During 2014 community consultation carried out about the options for replacing / renewing the park fitness trail.
- Liaison with Council about the flood defences necessary for the pavilion. These were successfully installed and used in Feb. 2014, preventing the pavilion and cafe from flooding
-
- Attended workshops run by London Parks and Green Spaces Forum at Civic Centre 2016/17.
- Improvements to the public toilets attached to the pavilion. To use profits from the cafe to install vandal proof soap dispensers, toilet roll holders and other 'toilet furniture'.
- In collaboration with Jane Plant, Merton Tree Warden Group, to provide natural screening / shade/ windbreak for the outdoor table tennis table and area around the children's playground - such as living willow screening.
- To work with local schools to extend the use/hire of the multisport and tennis/netball court facilities. This includes the new special needs school to be opened in Motspur Park in 2015

Activities in 2015 & 2016

- Tree planting working party. Trees planted around the car park area at the boundary in collaboration with the Merton Tree Wardens – Spring 2015
- Liaised with Merton Council regarding toilets and vandal proof toilet roll holders and soap dispensers installed.
- Spring and autumn 2015 litter picks around the park, its boundaries and the woodland.
- Summer Café was run by the Friends again during the paddling pool season
- Summer open Friends Meeting to engage other community groups such as the Motspur Park Mums and the dog walking group. As a result two fundraising events



were held in September – a children and adults fun run (including a music group event for toddlers) and a dog walkers social and dog show. This resulted in over £400 being raised. We also met with staff from Blossom House School newly located in our community – a school for children with Speech, Language and Communication Difficulties. They regularly use the park and we discussed opportunities for learning and volunteering.

- The Motspur Park Mums also organised an on-line petition over the summer in support of our paddling pool – this achieved over 1000 votes of support. The Friends also ran a petition concurrently in the café and in the local shops. A bid for funds is now being made for a new splash pad to replace the old paddling pool with a heritage link. Recollections of childhoods spent at the paddling pool by people of all ages and by several generations of the same family were made through comments left on the on-line petition. This has led us to develop ideas to record our park's heritage through spoken/oral histories.

- The Friends organised a Bat Walk in September led by Dave Lofthouse (arboricultural manager for Merton) with many sightings made around the tree-lined perimeter of the park.
- The Friends have been researching the heritage element of the park and have been in touch with the Carnegie Trust as a result of their nationwide campaign to identify over 900 'lost' playing fields originally protected as public green spaces by philanthropist Andrew Carnegie's charitable trust between 1927-1935. We have found out the Sir Joseph Hood Memorial Playing Field is one such park.
- We have been in consultation with the community about possible reorganisation of the tennis court facilities to possibly introduce a new system for access similar to Holland Gardens in Raynes Park. This would involve a Friends' annual fee for access, the money raised being used to ensure maintenance of the courts so they don't return to the overgrown state many of us remember 10 years ago. However, present feedback is against such a scheme.
- New volunteers have agreed to refresh the pavilion garden in spring 2016. The Friends will pay for planting.
- The Friends also continue to provide hanging baskets outside the pavilion.
- We responded to a request by the newly formed Motspur Park Football Club to run a Sunday morning café for their players and spectators. This has been going since September 2015 and will run until Easter 2016. We also open the crazy golf equipment during café opening times.

There has been much renewed interest in the Friends Group this year as people really value the community facilities and in the current climate of austerity want to work together with the local authority to ensure it continues to be a thriving green space.



APPENDIX 9 Climate Change Action Plan

Adaption	Actions
<p>Tree planting: Provide a tree planting budget for new tree planting in Parks New woodland areas in Parks and Open Spaces Encourage Green corridors Advice to Highways on street tree planting that may be more suitable to changing climate – changing species is premature at the present time, a greater variety is very likely a good move. Advice to Education to minimise removal of trees when creating new classrooms. BS 5837 should be followed when contractors are working in schools to minimise costs of maintenance or removal of trees in the future.</p> <p>Where tree removal is necessary, and replacement desirable, planting should be based on tree canopy area rather than like for like number replacement as a new sapling is NOT a replacement for a mature tree lost.</p> <p>Plant new trees in locations where there are higher visitor numbers. Popularise the conceptions, tree cover, tree canopy, shade tree.</p>	<p>Capital bid for Tree planting in 2009/10 Woodland/hedge planting schemes have taken place in Winter 2008 at Colliers Wood, Morden Park and Wandle Park in conjunction with local residents and tree wardens. Merton Group of London Wildlife Trust have enhanced a hedgerow at Beverley Meads Local Nature Reserve</p> <p>New guidance given to Education and Highways to minimise removal of trees and protect existing ones. Legislative protection of school trees is advised. Tree Strategy to be produced by 2010. Tree planting in streets may reflect changing climate with more planting of a greater variety of species from a wider range of climatic zones. More shade tree planting in play areas and paddling pools where high usage by Children and parents during the summer. For example, New trees were planted at Dundonald play area in 2008.</p>
<p>Shrub Planting: Planting should reflect the changing conditions. Replace bedding plants with sustainable planting in consultation with local residents Discourage use of more bedding plants and herbaceous plants which require more Maintenance and requires more water. Discourage the use of peat in bedding plants and plants bought in from Contractors Look at vertical planting walls.</p>	<p>Sustainable planting at Cannizaro Park to replace some bedding near main entrance and Cannizaro Hotel. Sustainable planting proposed at Ravensbury Park, Colliers Wood, Rowan Road Recreation Ground, Kendor Gardens in 2009/10.</p>

<p>Grounds Maintenance</p> <p>Relax mowing regimes to reduce number of cuts. Use of electric vehicles in Parks Green waste bays and composting on site Bark chip area so that mulch can be re-used in Parks but not to suppress ground flora in established wooded areas and dense shrubberies. Reduce production of woodchip by retaining deadwood piles/ habitat in Parks Reduction in use of pesticides and herbicides Irrigation systems to preserve water and protect existing planting schemes Encourage watering in the morning Encourage staff to ensure lights; heating is turned off/down when the buildings are not in use. Investigate alternatives to peat in any future bedding contracts. De-compaction methods after heavy use in Parks Prevent vehicle use and mowing around important trees. Purchase of mulcher/composter to avoid taking vegetation off site. Ensuring drainage ditches kept clear Sun safety advice and appropriate clothing given to Grounds Maintenance staff.</p>	<p>The Grounds maintenance contract is now in house so grass is cut when needed rather than when contract states. In some areas cuts have reduced from 17 times a year to 10. This will reduce compaction and reduce machine journeys. Many Local Nature reserves have meadows, which are only cut once a year. There are 6 electric vehicles in Parks. Team meetings held regularly to ensure unnecessary energy use. Turf management regime in partnership with Grassroots Trading Company introduced on bowling greens including John Innes Park to reduce chemical use. Reviewed annually with consultation with Grassroots Co. specialist. All bedding plants are now grown in peat free substrate De-compaction machinery used to reduce compaction and water logging after heavy use in Parks. i.e. Fireworks Displays and Tennis parking at Wimbledon Park. No heavy vehicles or mowing around established trees. New Composter purchased in 2008.</p>
<p>Hard Surfaces</p> <p>Reduce amount of hard surfacing in Parks</p>	<p>Where possible use free draining materials/grass Crete which reduces water problems elsewhere.</p>

<p>Internal Partnership Working</p> <p>Work with Planners and Corporate Facilities team to ensure that new buildings are constructed in an energy efficient way. These may include</p> <ul style="list-style-type: none"> Green roofs Solar Panels Wind turbines <p>Retention of all mature trees by appropriate development design</p> <p>Encouraging use of local contractors</p> <p>Waste management- separate skips for recyclable materials to avoid material being taken to landfill</p> <p>Re-using of existing buildings and materials</p> <p>Use of new, sustainable materials; masonite timber framed walls, warmcel insulation, English Oak, Natural ventilation, Larger windows to reduce lighting in buildings, Control systems, Energy efficient lighting, PVC free cables, Dual flush toilets, Miliken Earth square carpet, water based paints, rainwater harvesting.</p> <p>Work with Planners and Corporate Facilities to ensure that where possible existing buildings have energy efficient ways of operating.</p> <p>These may include replacing boilers with condensing boilers, introducing on off switches on taps, lights, heating to reduce electricity, water and costs and use.</p> <p>Work with Planners to ensure that S106 funding is made available for enhancing our Parks and Open Spaces.</p> <p>Work with Planners to protect our Green spaces and increase areas of Green space with sufficient revenue funding to maintain in the future.</p> <p>Work with Waste Services to re-cycle waste</p>	<p>New building proposed for Cannon Hill Common, Capital bid in 2009 to replace existing old pavilion at Abbey Recreation Ground. Pavilion completed in Autumn 2011. This build has a Green Roof.</p> <p>Corporate Facilities maintain park buildings and have a programme of works to reduce energy use in buildings. These may include condensing boilers, on/off switches, upgrade heating, lighting, and reduced water requirement for toilets.</p> <p>Over £300,000 S106 improvements in Parks in 200/8/9</p> <p>Recycling bins installed in Parks.</p>
<p>External Partners</p> <p>Work with Local Friends Groups and other partners to bid for funding to enhance open spaces and priority wildlife habitats. Protect existing Green space with assistance from Partners. Gather and store biological data that will help guide land management and development control decisions.</p>	<p>L.B.M works closely with E.A, National Trust, Merton Group of LWT, London Biodiversity Partnership and Friends Groups including 24 Friends Groups including Tree Wardens Friends of Sir Joseph Hood, Friends of John Inns Park and Make Colliers Wood Happy to bid for funding and help improve Parks in Merton.</p> <p>A recent project included a lake restoration project at Cannon Hill Common where funding was achieved through a Heritage Lottery Bid and</p>

	contribution from Cannon Hill Common Friends and the Environment Agency. LBM has entered into a service level agreement with Greenspace Information for Greater London.
Adaption through staff skills Timing of Operations Choices of plants Managing the soil organic matter, content and fertility Managing irrigation Managing pests and diseases Training/Conferences to learn new skills and exchange information	Reduction in use of herbicides and Pesticides in Parks. Training proposed for staff in 2009 include conservation skills. All staff have filled in a training requirement sheet in November 2008

<p><i>Control input to maintain the quality of water features and irrigation systems.</i></p> <p>Introduction of reed beds Silt traps Removal of Invasive plants along water courses Removal of concrete channels in Parks along water courses Use of bio bombs and Barley straw to watercourses to reduce algal blooms. Introduce irrigation systems to bowling Greens to preserve water. Introduction of automatic irrigation systems to 3 bowling greens to preserve water.</p>	<p>Reed beds introduced at Wandle Park and Cannon Hill Common to improve quality of water. Silt trap installed at Wimbledon Park in 2008. Barley Straw introduced at Wimbledon Park and Cannon Hill Common to reduce algal blooms. Removal of concrete channels to stream at Wandle Park. Proposed removal of some revetment and concrete channel on the River Wandle at Ravensbury Park in 2009/10. Control of invasive Pennywort in the River Wandle and Ravensbury Park Lake. New bowling green irrigation systems at Canons Recreation Ground, Joseph Hood and John Innes Park in 2008/9.</p>
<p><i>Sustainable transport in Parks</i></p> <p>Introduce shared use paths to encourage less car use Introduce bike racks in Parks Work bike</p>	<p>New shared use paths introduced at Sir Joseph Hood M.P.F, Joseph Hood and Morden Park in 2008/9. New shared use path proposed in 2009 at Wimbledon Park. Cycle racks introduced at Sir Joseph Hood and Joseph Hood in 2008. Mountain Bike available and pool car available to use from Civic Centre.</p>
<p><i>Recycling</i></p> <p>Use recycled materials in Landscape works Provide recycling bins in Parks for glass, bottles, cans and paper.</p> <p>Recycling bins introduced into six sites at Raynes Park SG, Sir Joseph Hood, John Innes Park, Colliers Wood Rec, Dundonald Rec and Haydons Road Rec.</p>	<p>Recycled produced used where possible in new landscaping projects. Timber from sustainable sources. Boardwalk at fishponds Wood used English Oak for boards rather than a Hardwood. Play areas use recycled products in wet pour surfacing. Re-cycling bins at Cannon Recreation Ground and Figges Marsh. Recycling bins proposed in 2009 for paper, glass, bottles and cans at Raynes Park S.G, Sir Joseph Hood M.P.F, John</p>

	Innes Park, Colliers Wood, Cannizaro Park, Dundonald Recreation Ground and Haydons Road
--	---

Appendix 10 Merton Leisure Facilities & Technical Group Contact Information

Contact	Name	Telephone Number	Email address
Head of Leisure and Greenspaces Manager	Doug Napier	020 8545 3657	doug.napier@merton.gov.uk
Parks Support	idverde	020 8540 1606	Zsolt.Takacs@idverde.co.uk
Tree Officer	David Lofthouse	020 8545 3659	david.lofthouse@merton.gov.uk
General Enquiries		020 8545 3677	leisure@merton.gov.uk