










DO NOT SCALE

DESCRIPTION

ON THE WESTERN SIDE, FROM A POINT 3.1 METRES SOUTH OF THE SOUTHERN FLANK WALL OF NO 2 HILLCROSS AVENUE, NORTHWARDS FOR A DISTANCE OF 5 METRES.

REMOVE RESIDENT PARKING SIGN FROM EXISTING LAMP COLUMN AND RELOCATE. ATTACH NEW CYCLE HIRE SIGN. INSTALL NEW POST AND ATTACH RELOCATED RESIDENT PARKING SIGN

KEY

-  EXISTING KERB
-  EXISTING ROAD MARKING
-  EXISTING ROAD MARKING TO BE REMOVED
-  PROPOSED ROAD MARKING
-  BUILDING REFERENCE LINE
-  PROPOSED SIGN AND POST
-  EXISTING LAMP COLUMN

P01	18-02-2025	NU	FIRST ISSUE	CM	CM
REV	DATE	BY	DESCRIPTION	CHK	APP

DRAWING STATUS: **S2 - FOR INFORMATION**



WSP House, 70 Chancery Lane, London, WC2A 1AF, UK
T+ 44 (0) 207 314 5000, F+ 44 (0) 207 314 5111
wsp.com



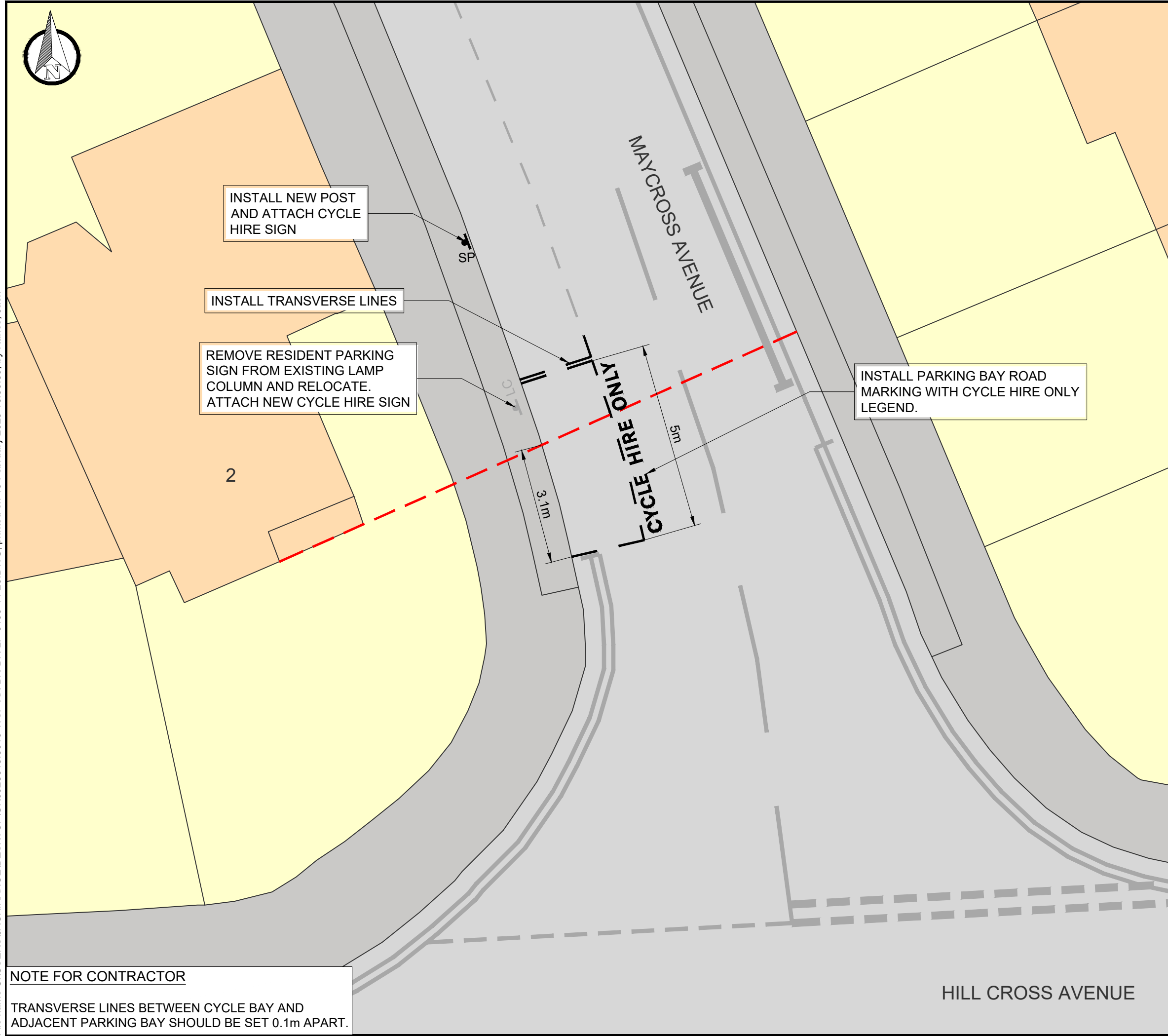
PROJECT: **MERTON DOCKLESS BIKE HIRE PARKING BAYS**

TITLE: **MAYCROSS AVENUE (NEXT TO WALL ON WEST SIDE)
MORDEN, SM4 4EA
CPZ - CH (CANNON HILL)**

SCALE @ A3: 1:100	CHECKED: CM	APPROVED: CM
----------------------	----------------	-----------------

PROJECT No: UK0028648.3916	DESIGNED: NU	DRAWN: NU	DATE: February 25
-------------------------------	-----------------	--------------	----------------------

DRAWING No: CH-5 - MAYCROSS AVENUE	REV: P01
--	--------------------



INSTALL NEW POST AND ATTACH CYCLE HIRE SIGN

INSTALL TRANSVERSE LINES

REMOVE RESIDENT PARKING SIGN FROM EXISTING LAMP COLUMN AND RELOCATE. ATTACH NEW CYCLE HIRE SIGN

INSTALL PARKING BAY ROAD MARKING WITH CYCLE HIRE ONLY LEGEND.

File name C:\USERS\JACK.RANCE\DESKTOP\UK0028648.3916-WSP-XX-BR-DR-LP-0100-11-20.DWG, printed on 19 February 2025 16:50:50, by Rance, Jack

NOTE FOR CONTRACTOR
TRANSVERSE LINES BETWEEN CYCLE BAY AND ADJACENT PARKING BAY SHOULD BE SET 0.1m APART.