



Friends of Wimbledon Park

Wandle Valley Regional Park boundaries

The Friends of Wimbledon Park (Friends) is a voluntary umbrella organization that aims to give a voice to local people, community groups and other interested parties, to protect and enhance this well-loved heritage landscape, Heritage Wimbledon Park, for future generations.

This response relates to Matter 11: Green and Blue Infrastructure Issue and question 4.

4. Are the boundaries of the Wandle Valley Regional Park, as identified in the Plan, justified? What significance does any greater coverage shown in the All London Green Grid have?

Our response.

Heritage Wimbledon Park Brook flows into the River Wandle at Earlsfield. Its length is about 1km. The endangered European Eel is present in Wimbledon Park Lake although there are no recent reports of glass eels. Recent works on the dam have ensured that when the glass eels return there will be a clear passage for them.

The lake is fed by Rushmere and Bigden Brooks from Wimbledon Common.

If you stand in the Great Field in Wimbledon Park looking south and west one can see the hills whilst east and north is relatively flat going on to the Wandle Delta. Clearly this park is in a valley.

The Friends joined the Wandle Forum and have participated in their activities. An example we participated in is Wandle Vistas:

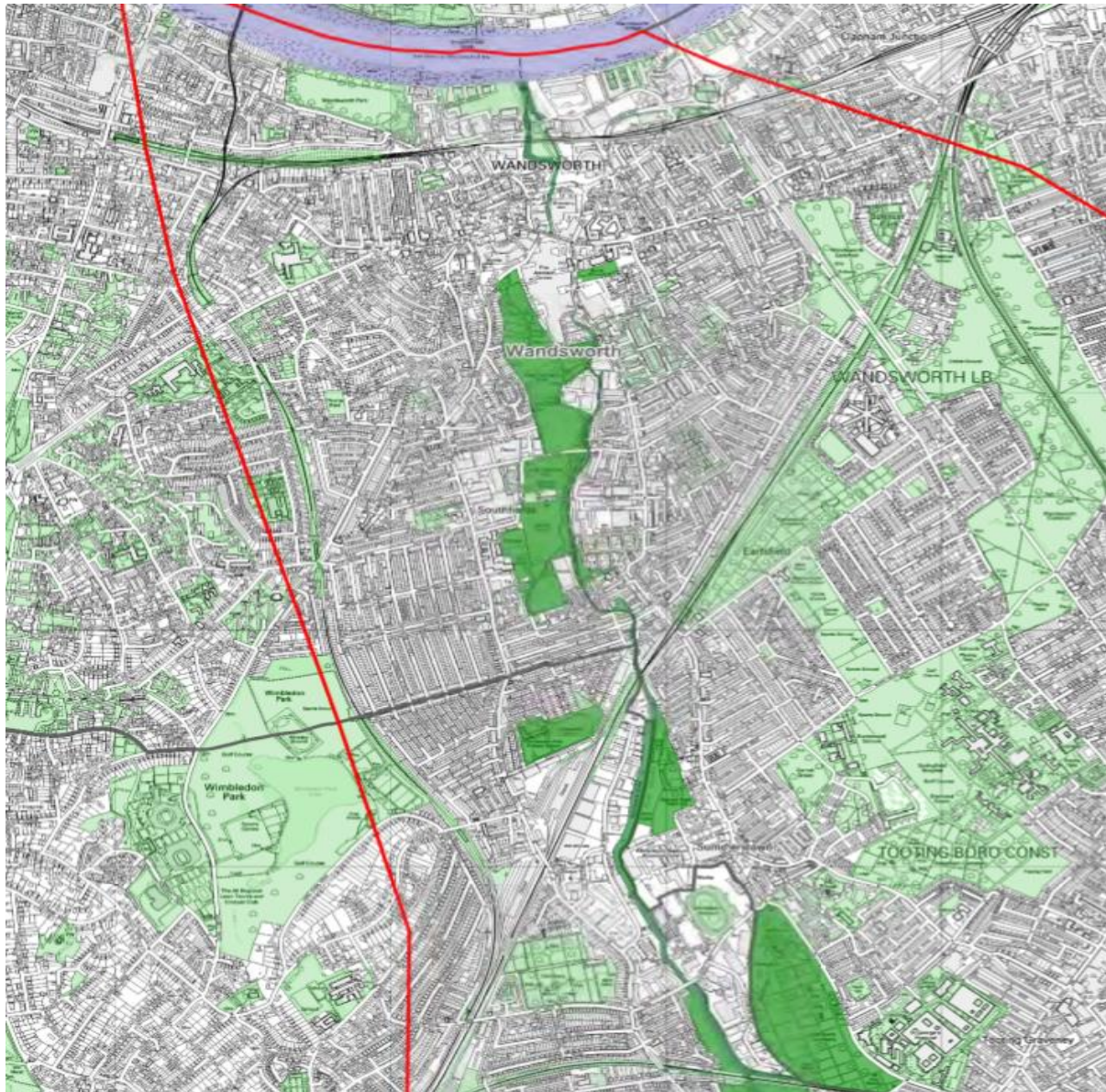
[Wandle Vistas: A View to the Future • Wandle Valley \(wandlevalleypark.co.uk\)](http://wandlevalleypark.co.uk)



An example from Wandle Vistas.



Friends of Wimbledon Park



The All London Green Grid carves off a section of Wimbledon Park leaving most of the area outside. Why not include all the park? The area east of the river includes areas on top of a hill!

The boundary here is unjustified and Wimbledon Park should be included in the Wandle Valley Regional Park.

Dr N R Steiner
Chair Friends of Wimbledon Park
116 Clonmore Street
Southfields
London
SW18 5HB