

## LBM36 Schedule of Modifications to the Policies Map – January 2024

- Merton’s Policies Map is not a development plan document and although the Inspectors do not have the power to recommend modifications to it, the spatial implications of Main Modification need to be captured on the Policies Map in the interests of effectiveness.
- Merton adopted Policies Map (2014) is available in the [examination library](#) as: 0D26 [Merton Sites and Policies Plan and Policies Map 2014](#).
- This schedule of modifications shows proposed modification to the [Stage 3 pre-submission draft Policies Map consulted on 22 July to 6 September \(Ref. 0D2\)](#).
- The council has also published this online map that shows, where applicable, duplicate layers to illustrate the difference between the version of the draft Policies Map as published at Stage 3 (July to September 2021) and the modifications proposed in this schedule: [Merton's draft Policies Map 2023](#).

| Mod Ref.             | Page | Plan Ref.                             | Proposed Changes   | Reason  |
|----------------------|------|---------------------------------------|--|---|
| MM-MOL Map-01a       | Map  | Policies Map – Metropolitan Open Land | <i>Remove the properties at 1, 2, 2a, 3 The Cottages, Lower Morden Lane SM4 4NU from Lower Morden Metropolitan Open Land (MOL-3).</i>                  | This site contains 4 residential properties which do not form part of the adjoining cemetery and are physically separated. They do not meet any of the MOL criteria set out in the London Plan and officers consider that their inclusion in the MOL is an anomaly from the previous policy maps and they should be removed to correct this error. The modifications ensure that the Local Plan is ‘justified’.<br><br>Refer to maps Appendix 1 for details |
| MM-MOL Map-01b       | Map  | Policies Map – Metropolitan Open Land | <i>Slight boundary amendments around the Eveline Day Nursery SW20 9NA from Lower Morden Metropolitan Open Land (MOL-3).</i>                            | Corrections to the MOL boundary have been made to fix a GIS cartographic error from the Regulation 19 maps where the MOL boundary did not align with the property boundaries. The modifications ensure that the Local Plan is ‘justified’.<br><br>Refer to maps Appendix 1 for details  |
| MM-Open Space Map-02 | Map  | Policies Map – Open Space             | <i>Remove the properties at 1, 2, 2a, 3 The Cottages, Lower Morden Lane SM4 4NU from Merton and Sutton Joint Cemetery Surrounds Open Space (M074).</i> | This site contains 4 residential properties which do not form part of the adjoining cemetery. They do not meet the Open Space criteria set out in the Merton Green Infrastructure Study 2020. Officers consider that their inclusion in the Open Space designation is an anomaly and they should be removed. The modifications ensure that the Local Plan is ‘justified’.   |

| Mod Ref.             | Page | Plan Ref.  | Proposed Changes   | Reason   |
|----------------------|------|--|--|--|
|                      |      |  |  | Refer to map Appendix 1 for details.   |
| MM-Open Space Map-03 | Map  | Policies Map – Open Space                                  | <i>Remove part of Tooting and Mitcham Imperial Sports Ground from Open Space (P028), in accordance with approved planning application 19/P4094.</i>                            | In accordance with approved Planning Application 19/P4094. This is to align with the amendment made to the MOL boundary, as per the Stage 3 Policy maps. The site was reviewed by officers prior to Stage 3 consultation; however it was left off the published map in error. The modifications ensure that the Local Plan is 'justified'.<br><br>Refer to map in Appendix 1 for details.  |
| MM-Open Space Map-04 | Map  | Policies Map – Open Space                                  | <i>Remove part of the Eastfields estate site owned by Clarion Housing Group from Streatham Park Cemetery Open Space (C004).</i>  | This is to align with the approved planning application 17/P1717. This change was highlighted by Clarion Housing Group through their response to the Stage 3 Local Plan consultation. The modifications ensure that the Local Plan is 'justified'.<br><br>Refer to map Appendix 1 for details.   |
| MM-Open Space Map-04 | Map  | Policies Map – Open Space                                  | <i>Remove part of the Long Bolstead Recreation Ground owned by Clarion Housing Group from Long Bolstead Recreation Ground Open Space (M060).</i>                               | This is to align with the approved planning application 17/P1717. This change was identified by officers following the Clarion Housing Group response to the Stage 3 Local Plan consultation. The modifications ensure that the Local Plan is 'justified'.<br><br>Refer to map Appendix 1 for details.   |
| MM-SINC Map-05       | Map  | Policies Map – Sites of Importance for Nature Conservation | <i>Wimbledon Park SINC (MeBI02) - An additional area of land needs to be included in this SINC as the land contains a number of veteran trees and other wildlife interest.</i> | Reviewed following Stage 3 Local Plan response (D .Dawson) and confirmed by Martin Boyle (LBM Greenspaces team).<br>As part of the recent Wimbledon Park Lake project this land has been extensively surveyed and it holds nature conservation interest in line with the SINC designation. It is considered that the site was excluded in error.<br>This change was identified through a Stage 3 Local Plan consultation response and has been confirmed with the Council's Ecologist. |

| Mod Ref.                  | Page | Plan Ref.  | Proposed Changes   | Reason   |
|---------------------------|------|--|--|--|
|                           |      |  |  | <p>The modifications ensure that the Local Plan is 'justified'.</p> <p>Refer to map Appendix 1 for details.</p>  |
| MM-SINC Map-06            | Map  | Policies Map – Sites of Importance for Nature Conservation | <i>Myrna Close SINC (MeBI10) - The SINC boundary needs to be amended in accordance with approved planning application 16/P3430.</i>  | <p>In accordance with approved Planning Application 16/P3430 to reflect the residential properties that have been built and the new ecology area created on site.</p> <p>The site was reviewed by officers prior to Stage 2a consultation, however it was left off the published map in error.</p> <p>The modifications ensure that the Local Plan is 'justified'.</p> <p>Refer to map Appendix 1 for details.</p> |
| MM-SINC Map-06a           | Map  | Policies Map – Sites of Importance for Nature Conservation | <i>Morden Park SINC (MeBI11) - The SINC boundary needs to be amended to align with the details in the approved and implemented landscaping condition (9) of application 16/P0882.</i>                  | <p>To ensure the boundaries accurately align with approved and implemented landscaping details that include hardstanding for parking and access to an electrical substation, which are not be designated as being part of the SINC. The modifications ensure that the Local Plan is 'justified'.</p> <p>Refer to map Appendix 1 for details.</p>   |
| MM-Green Corridor Map-07  | Map  | Policies Map – Green Corridor                              | <i>Ridge Road to Wimbledon Park Green Corridor (GC19) - The Green Corridor boundary needs to be amended to remove part of the Thames Water site at Byegrove Road, Colliers Wood.</i>                   | <p>In discussions with Thames Water officers agree that this part of the site does not meet the Green Corridor criteria and therefore should be removed from the Policies Map. Up to date site photos were provided by Thames Water following the Stage 3 submission.</p> <p>The modifications ensure that the Local Plan is 'justified'.</p> <p>Refer to map Appendix 1 for details.</p>                          |
| MM-Green Corridor Map-07a | Map  | Policies Map – Green Corridor                              | <i>Morden Park and Surrounds (GC10) - The Green Corridor boundary needs to be amended to align with the details in the approved and implemented landscaping condition (9) of application 16/P0882.</i> | <p>To ensure the boundaries accurately align with approved and implemented landscaping details that include hardstanding for parking and access to an electrical substation, which are not be designated as</p>  |

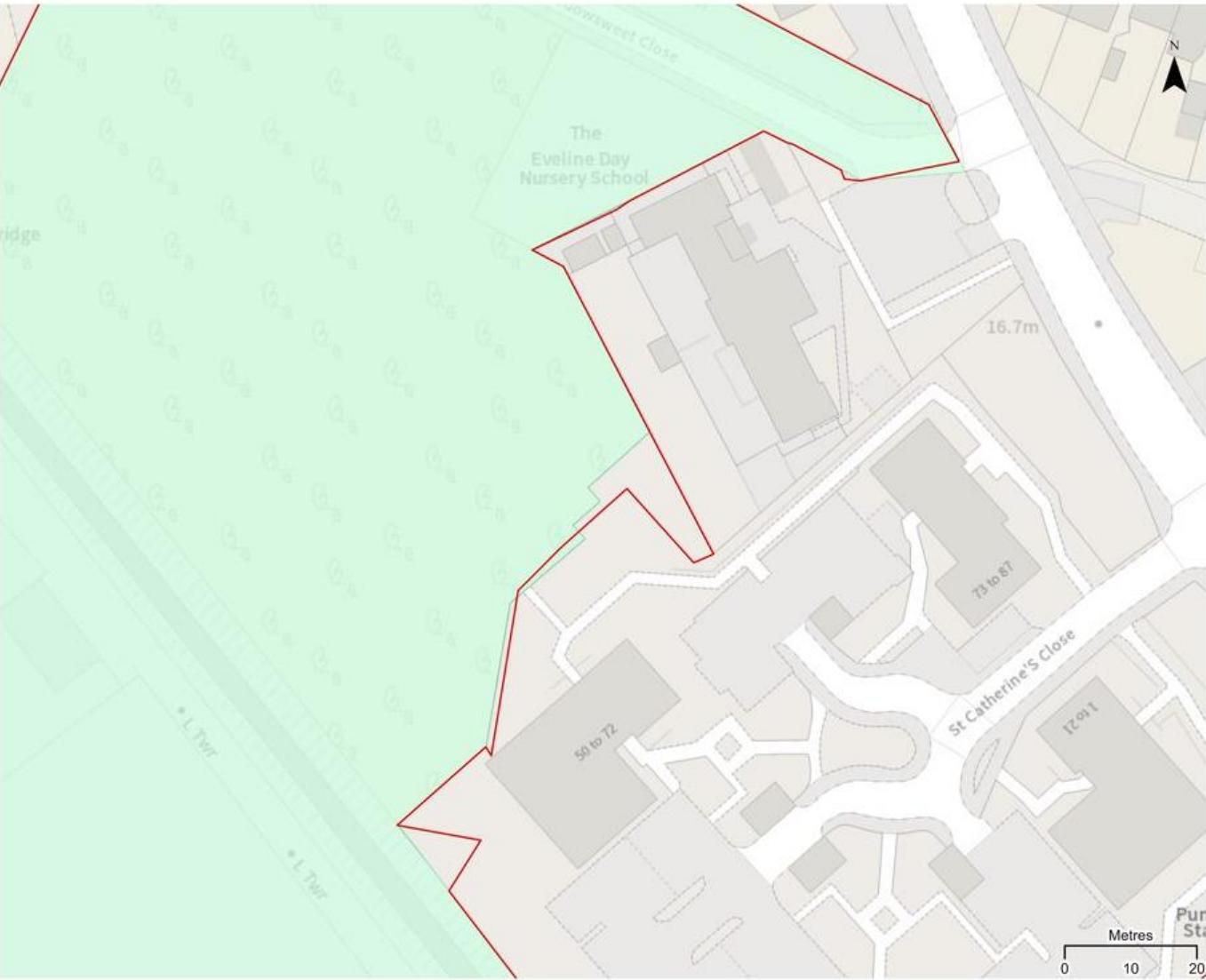
| Mod Ref.  | Page | Plan Ref.   | Proposed Changes   | Reason  |
|---|------|---|--|---|
|   |      |   |  | being part of the Green Corridor. The modifications ensure that the Local Plan is 'justified'.<br><br>Refer to map Appendix 1 for details.  |
| MM-APZs-Map-08  | Map  | Policies Map – Archaeological Priority Zones                          | <i>Removed the map showing Archaeological Priority Zones from the Policies Map.</i>  | For accuracy and to ensure that the Local Plan is 'justified', this data has been removed because it has been superseded by Archaeological Priority Areas according to the latest information from Historic England.  |
| MM-Conservation Areas-Map-09                                      | Map  | Policies Map<br>Conservation Areas                                    | <i>Added labels to the map showing the Conservation Area codes and also a table below the legend with the name of each of the Conservation Areas</i> | For clarity and to ensure the Local Plan is "justified", the Conservation Areas map has been labelled.<br><br>Refer to map Appendix 1 for details.  |
| MM-Listed Buildings-Map-10  | Map  | Policies Map<br>Listed Buildings                                      | <i>Updated to provide the latest information.</i>  | For accuracy this map has been updated with the latest information from Historic England. This modification ensures that the Local Plan is "justified"  |
| MM- Locally Listed Buildings-Map-11                               | Map  | Policies Map<br>Locally Listed Buildings                              | <i>Updated to provide the latest information.</i>  | For accuracy this map has been updated with the latest information from Merton Council. This modification ensures that the Local Plan is "justified".<br><br>Refer to map Appendix 1 for details.   |
| MM- Wandle Trail/ National Cycle Network Route 20 (NCN20)- Map-12 | Map  | Policies Map<br>Wandle Trail/ National Cycle Network Route 20 (NCN20) | <i>New map to highlight the cycle routes that are part of the Wandle Trail</i>   | For clarity the cycle network that is part of the Wandle Trail has been added as a separate map to highlight its importance in enabling active travel choices. This change was requested at the Stage 3 consultation from the Wandle Valley Forum.<br><br>The name of the map has also been updated to improve clarity.<br><br>Refer to map Appendix 1 for details. |
| MM- Wandle Trail proposed "missing link" route- Map-13            | Map  | Policies Map - New map<br>Wandle Trail proposed                       | <i>Cycle network routes have been updated to show the Wandle Missing Link</i>  | For accuracy and to ensure that the Local Plan is 'justified', the cycle network map has been updated to reflect the latest agreement on the Wandle Missing Link on the borough boundary between Merton and Wandsworth.   |



| Mod Ref.                       | Page | Plan Ref.                           | Proposed Changes  | Reason  |
|--------------------------------|------|-------------------------------------|---|---|
|                                |      | "missing link" route -Map13         |   | The name of the map has also been updated to improve clarity.<br><br>Refer to map Appendix 1 for details.   |
| MM-Neighbourhood Parade Map-14 | Map  | Policies Map – Neighbourhood Parade | <i>Neighbourhood Parade at 211-219 Manor Road - The Neighbourhood Parade boundary needs to be amended to correct a drafting error and display all the properties as listed in Table 13.5b 'Neighbourhood Parades in Merton', i.e. 211 Manor Road is to be shown to be within the Neighbourhood Parade.</i>                  | To improve accuracy, effectiveness, and ensure that the Local Plan is 'justified'.<br><br>Refer to map Appendix 1 for details.  |
| MM-Neighbourhood Parade Map-15 | Map  | Policies Map – Neighbourhood Parade | <i>Neighbourhood Parade at 172b - 196– 172B Streatham Road - The Neighbourhood Parade boundary needs to be amended to correct a drafting error and display all the properties as listed in Table 13.5b 'Neighbourhood Parades in Merton', i.e. 196 Streatham Road is to be shown to be within the Neighbourhood Parade.</i> | To improve accuracy, effectiveness, and ensure that the Local Plan is 'justified'.<br><br>Refer to map Appendix 1 for details.  |
| MM-Site Allocation Map-16      | Map  | Policies Map – Site Allocations     | <i>Site Allocation Mo5 Morden Medical Centre – change the boundary line location at the southeastern corner of the site, to ensure that the whole of the eastern site boundary aligns with the parts of Morden Road that are designated as 'TfL Red Route'.</i>   | To improve accuracy and effectiveness.<br><br>Refer to map Appendix 1 for details.  |
| MM-Site Allocation Map-17      | Map  | Policies Map – Site Allocations     | <i>Site Allocation Wi3 All England Lawn Tennis Club – amend boundary to exclude any parts on Wimbledon Park and therefore only include the portions to the west of Church Road.</i>   | To ensure the plan is effective and consistent with national policy.<br><br>Refer to map Appendix 1 for details.  |
| MM-SAC Map                     | Map  | Policies Map – new map              | <i>New map to show extent of Special Area of Conservation(SAC) on Wimbledon Common</i>  | To improve clarity and ensure that the extent of the SAC, which is referred to in Policy O15.3, is shown on the Policies Map.<br><br>Refer to map Appendix 1 for details. |

Appendix 1 – mapping changes



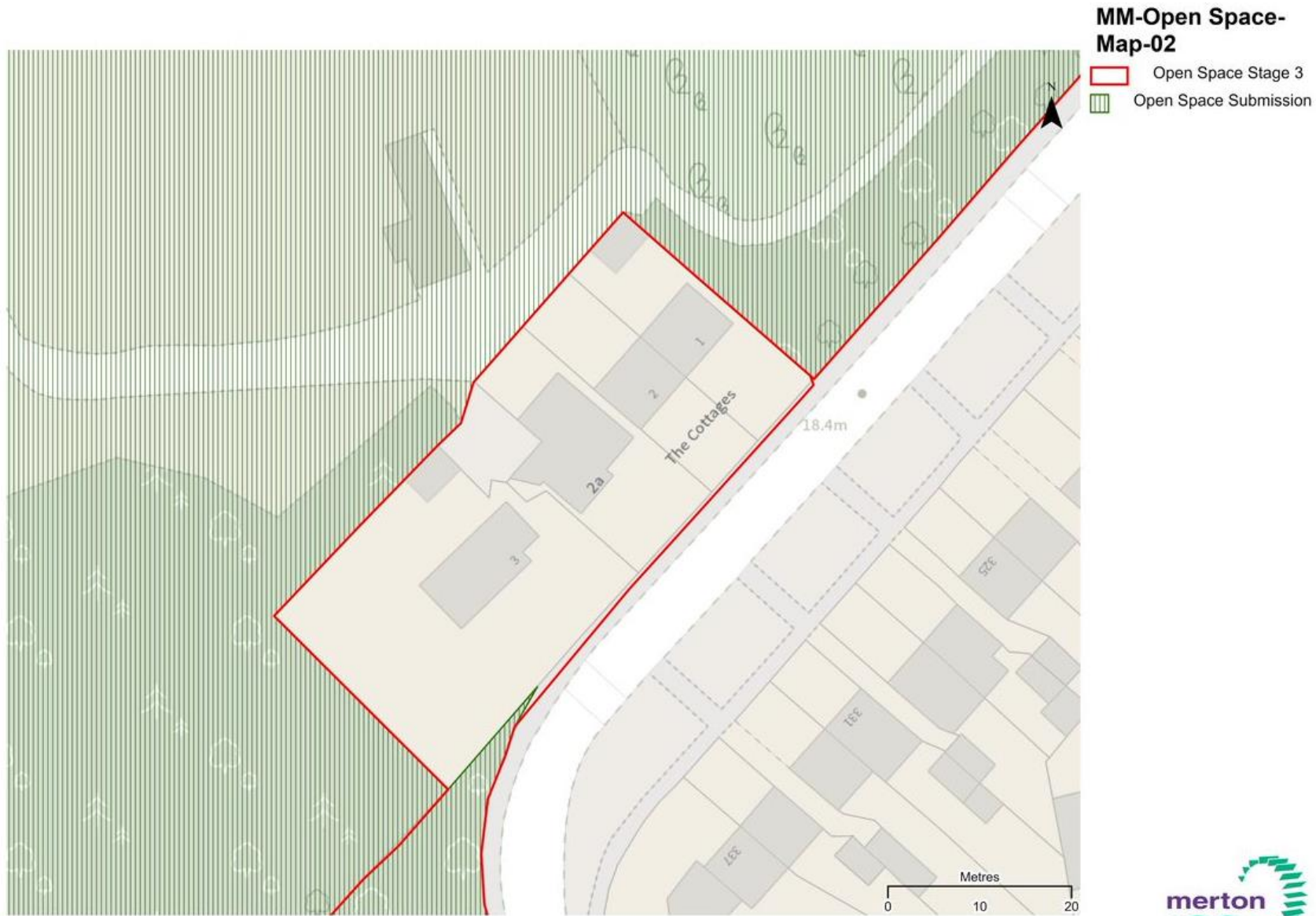
**MM-MOL-Map-01b**



-  MOL Stage 3
-  MOL Submission

Contains OS data © Crown copyright [and database rights] (2021) OS (100019259)





Contains OS data © Crown copyright [and database rights] (2021) OS (100019259)

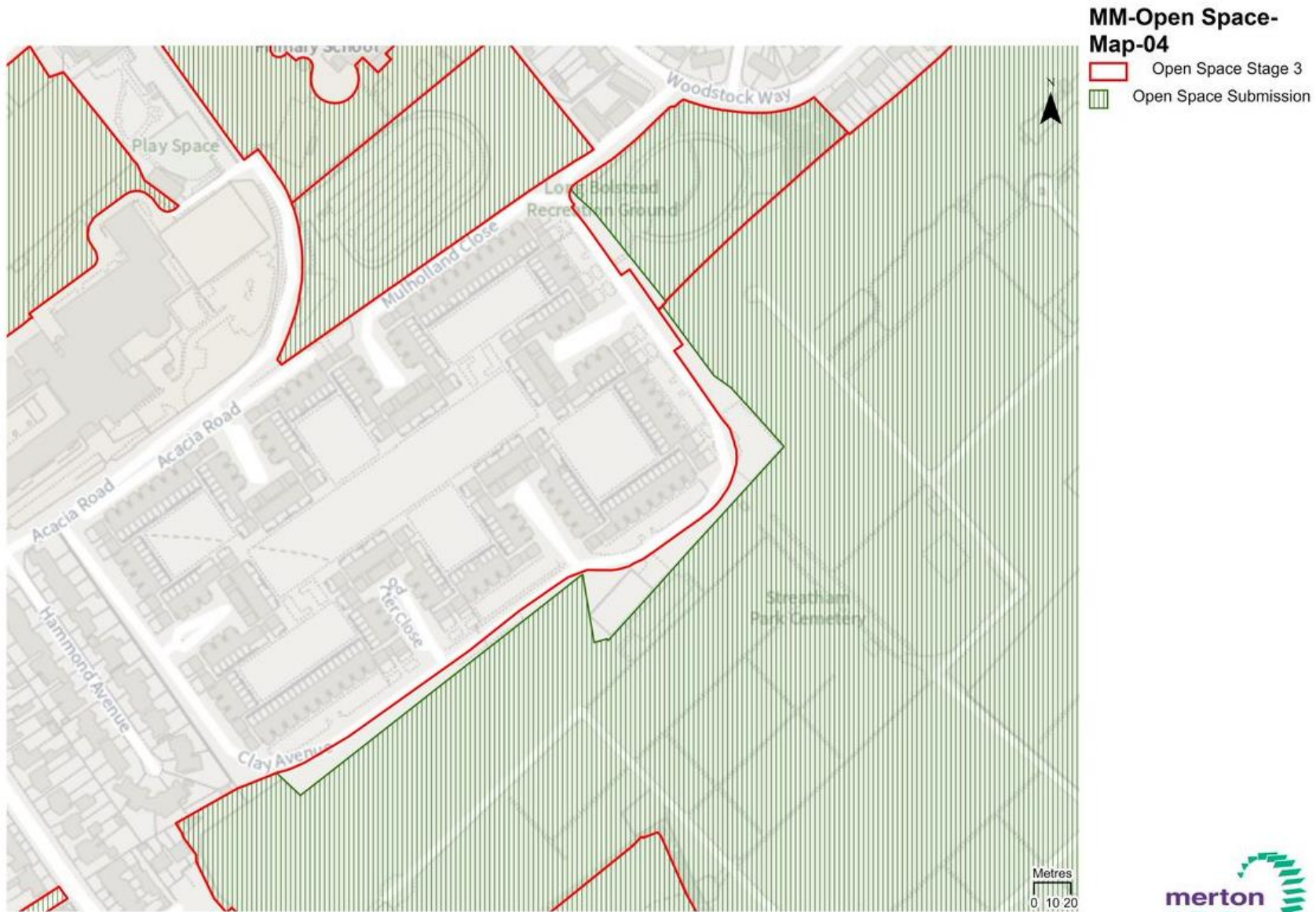






Contains OS data © Crown copyright [and database rights] (2021) OS (100019259)

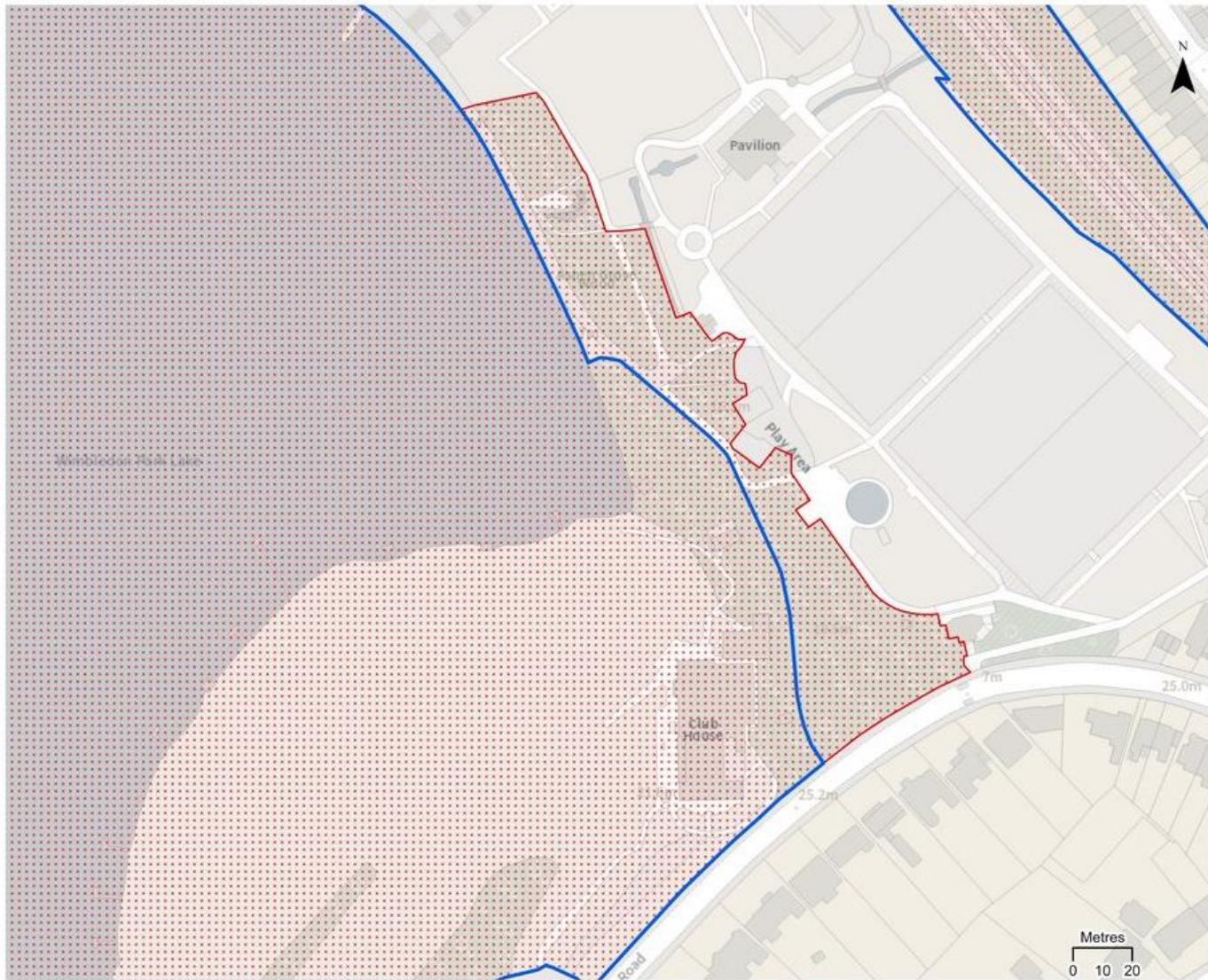






Contains OS data © Crown copyright [and database rights] (2021) OS (100019259)



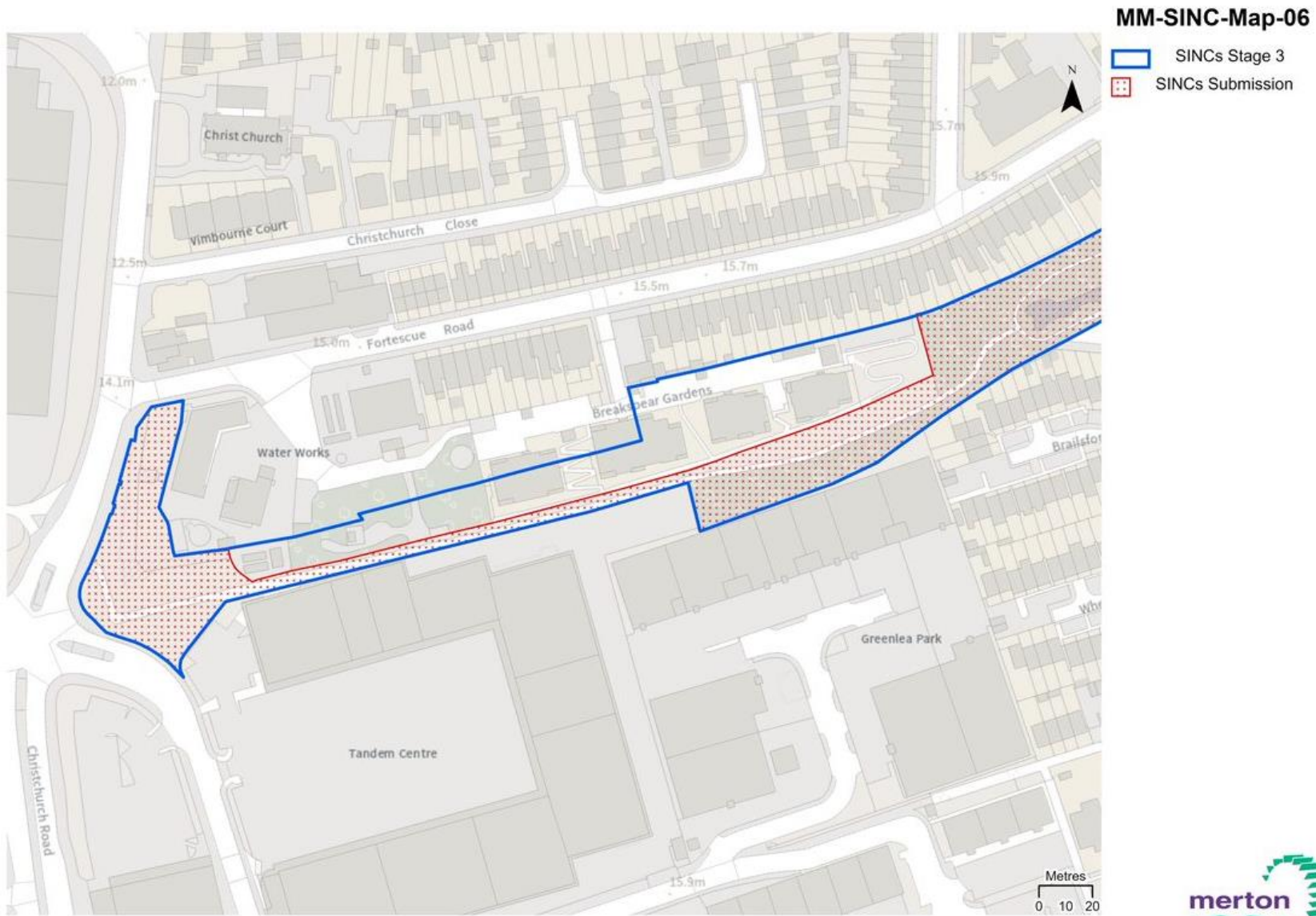
### MM-SINC-Map-05



-  SINC Stage 3
-  SINC Submission

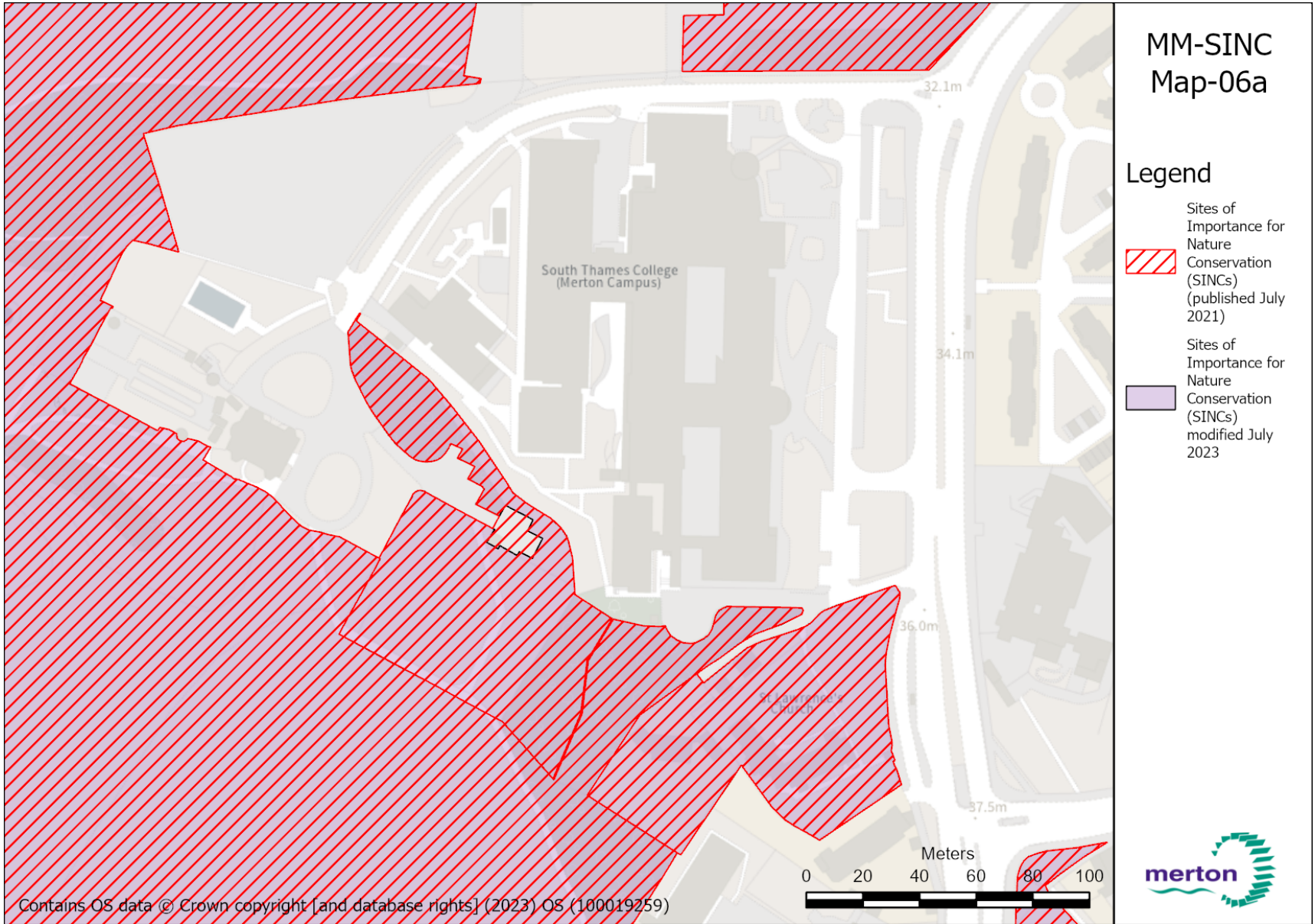
Contains OS data © Crown copyright [and database rights] (2021) OS (100019259)



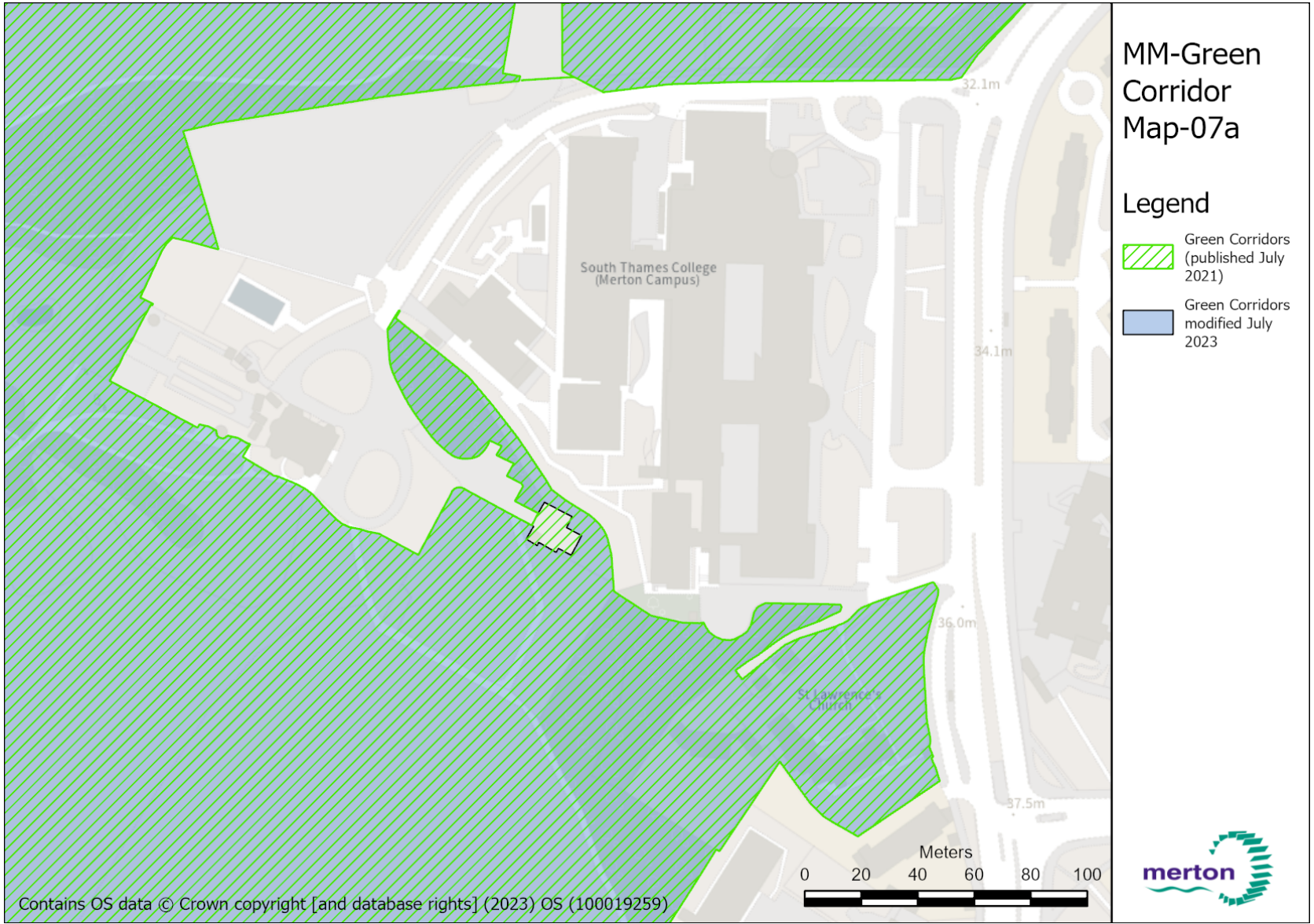


Contains OS data © Crown copyright [and database rights] (2021) OS (100019259)

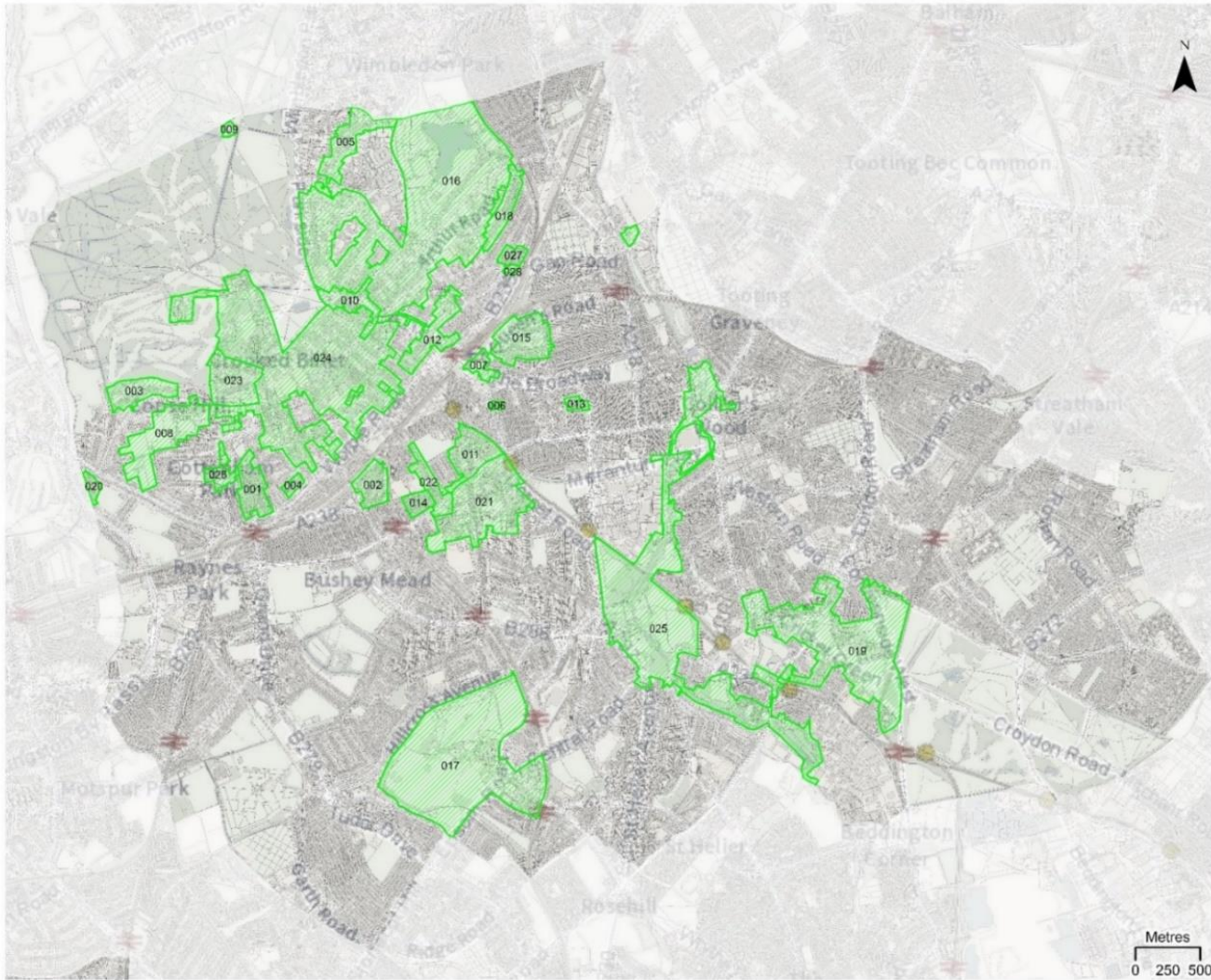








# MM-Conservation Areas-Map-09



 Conservation Areas

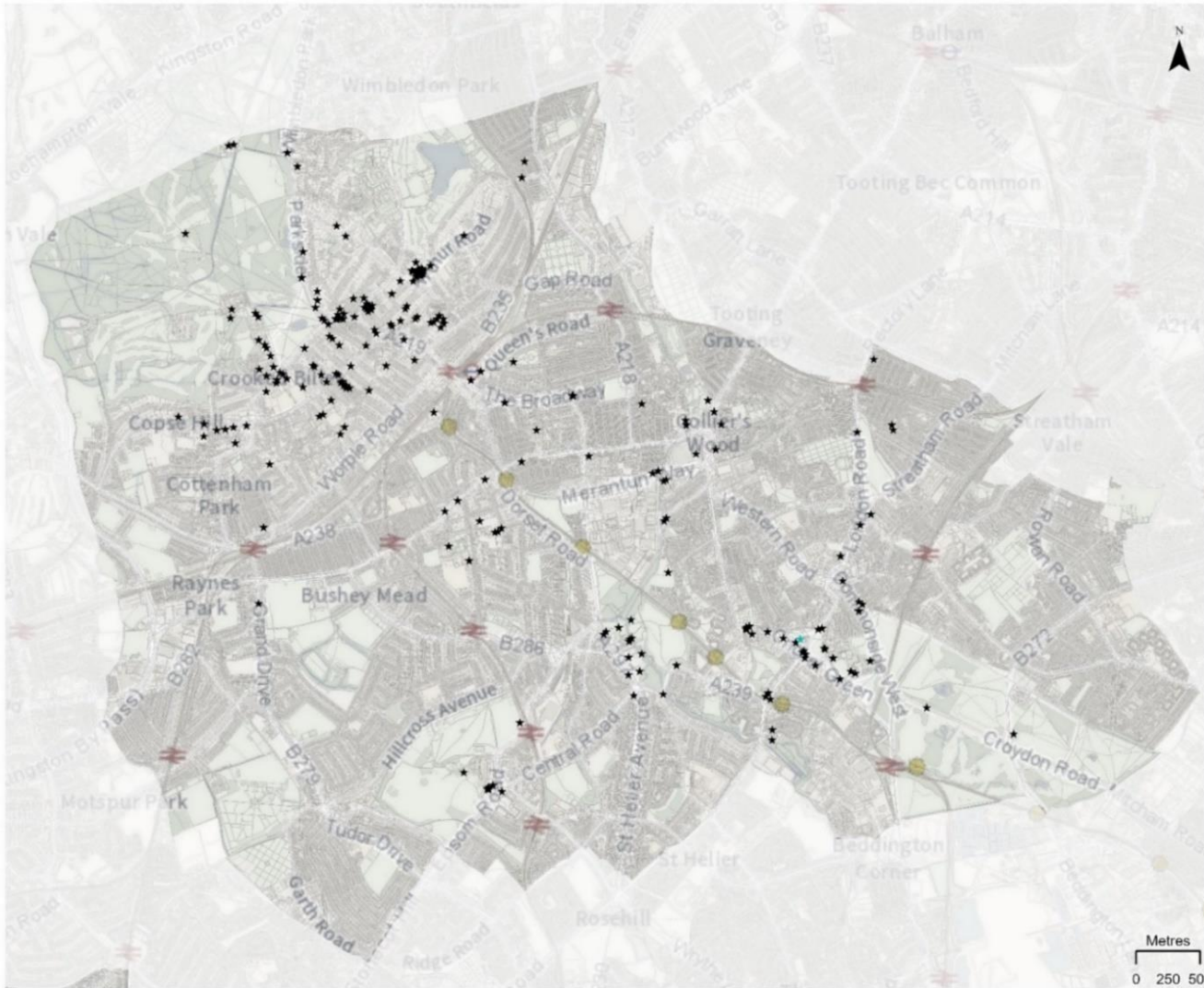
| Area Code | Area Name                   |
|-----------|-----------------------------|
| 001       | Lambton Road                |
| 002       | Dennis Park Crescent        |
| 003       | Drax Avenue                 |
| 004       | Dunmore Road                |
| 005       | Bathgate Road               |
| 006       | Bertram Cottages            |
| 007       | The Broadway                |
| 008       | Copse Hill                  |
| 009       | Wimbledon Windmill          |
| 010       | Wimbledon Village           |
| 011       | John Innes- Wilton Crescent |
| 012       | Wimbledon Hill Road         |
| 013       | Pelham Road                 |
| 014       | Wimbledon Chase             |
| 015       | South Park Gardens          |
| 016       | Wimbledon North             |
| 017       | Upper Morden                |
| 018       | Vineyard Hill Road          |
| 019       | Mitcham Cricket Green       |
| 020       | Westcoombe Avenue           |
| 021       | John Innes- Merton Park     |
| 022       | Merton Hall Road            |
| 023       | Wool Road                   |
| 024       | Wimbledon West              |
| 025       | Wandle Valley               |
| 026       | Durham Road                 |
| 027       | Kenilworth Avenue           |
| 028       | Leopold Road                |



Contains OS data © Crown copyright [and database rights] (2021) OS (100019259)



## MM-Listed Buildings-Map-10

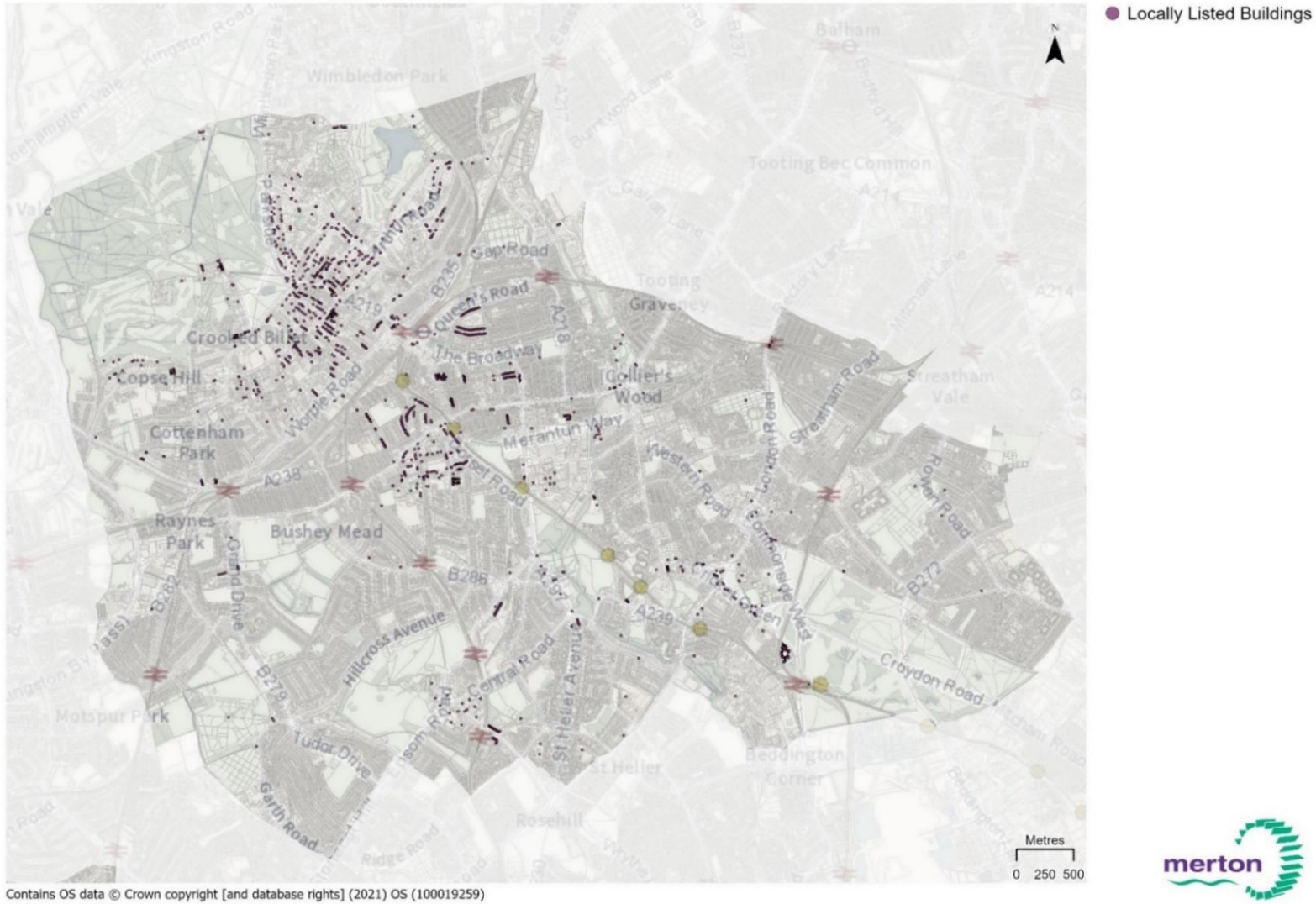


★ Listed Buildings

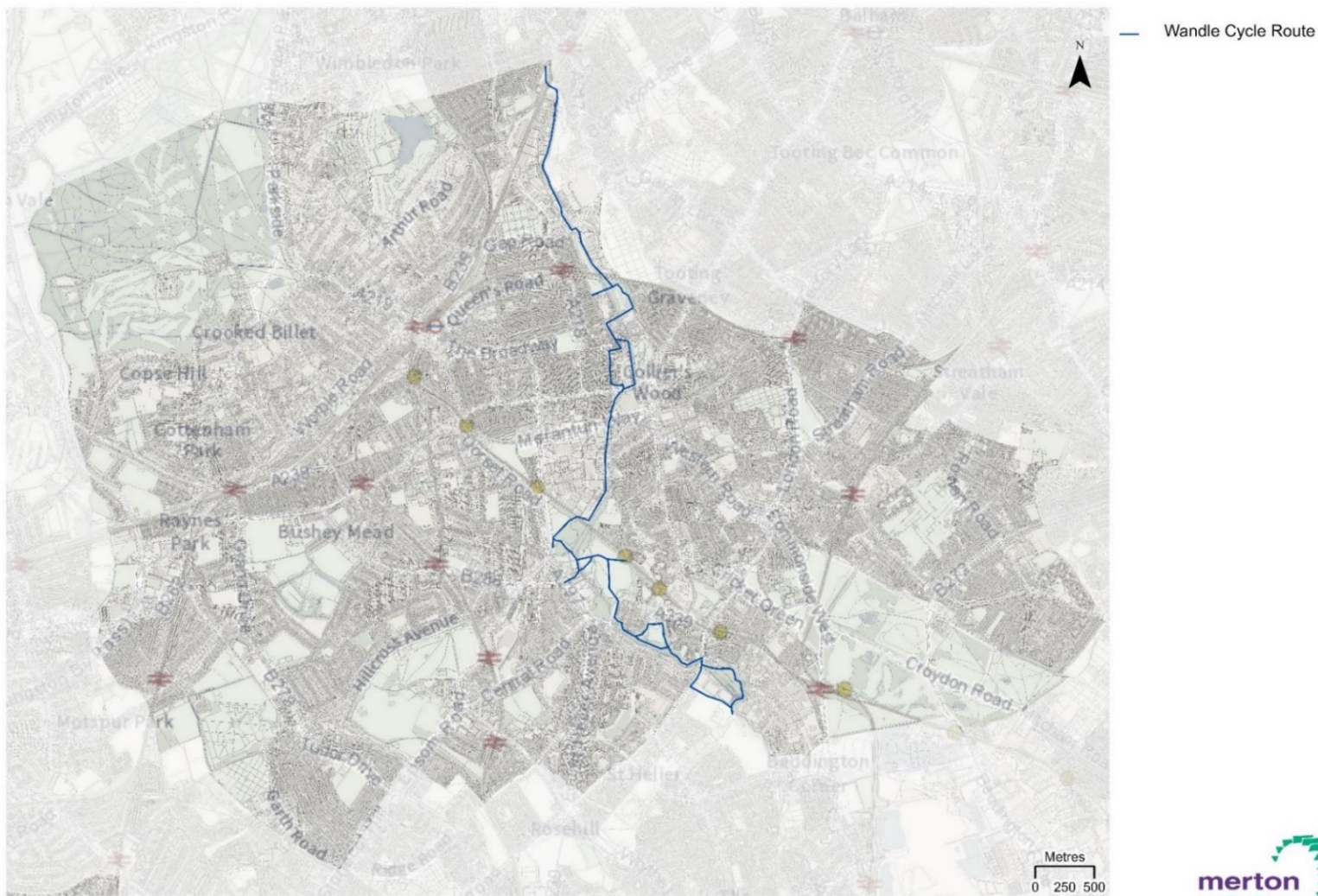
Contains OS data © Crown copyright [and database rights] (2021) OS (100019259)



# MM-Locally Listed Buildings-Map-11

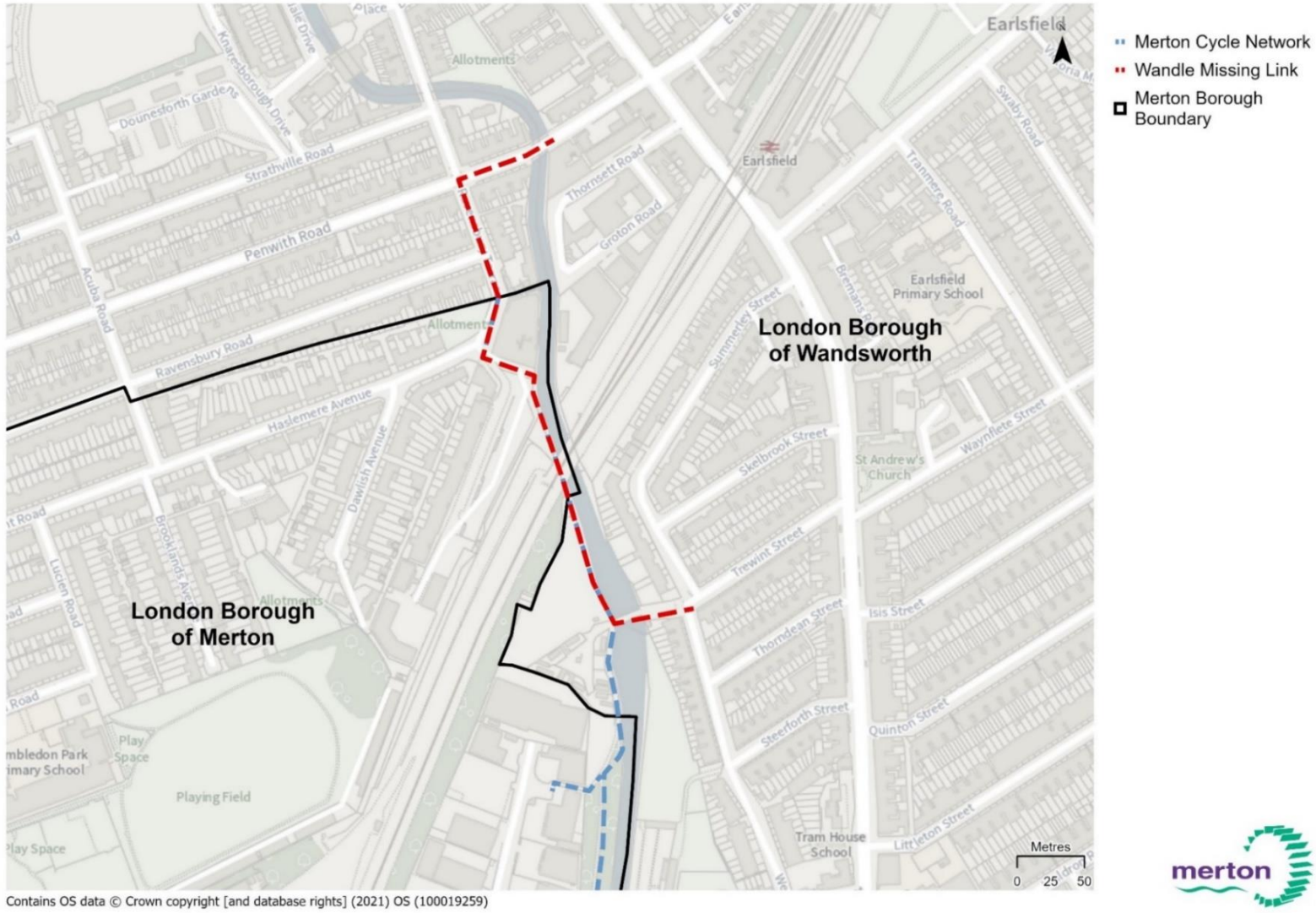


## MM-Wandle Trail/ Cycle Network Route 20 (NCN20)-Map-12

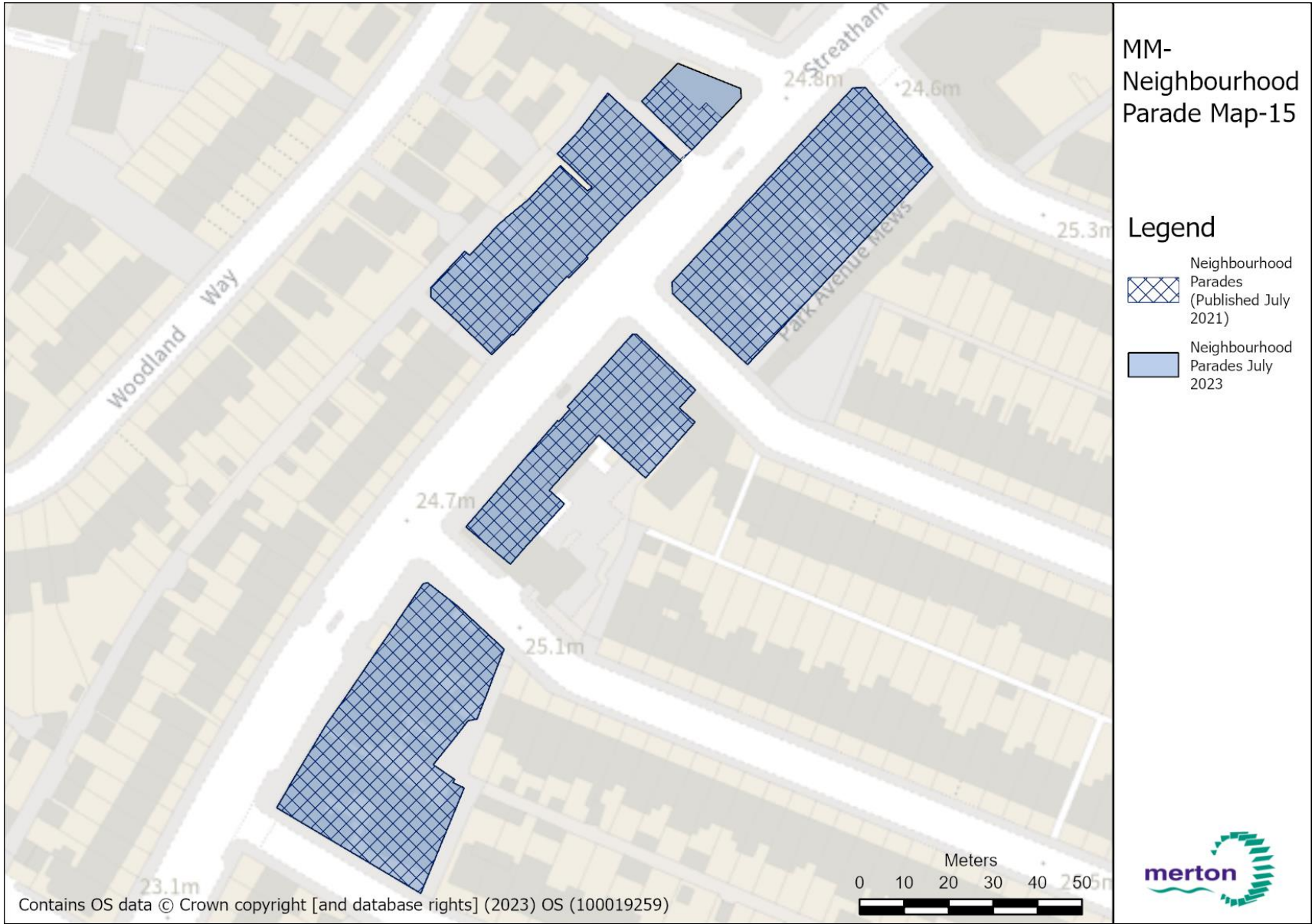


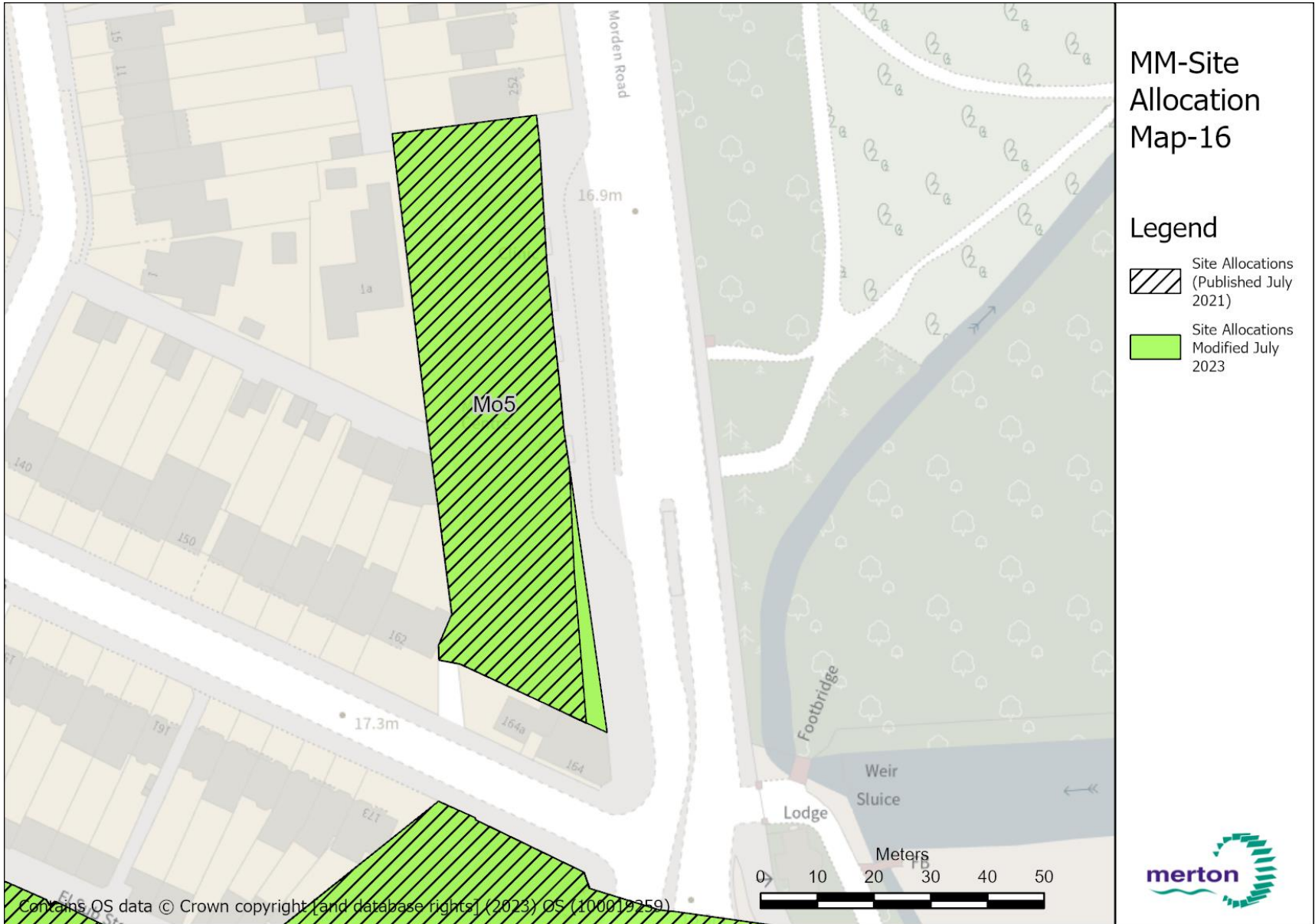
Contains OS data © Crown copyright [and database rights] (2021) OS (100019259)

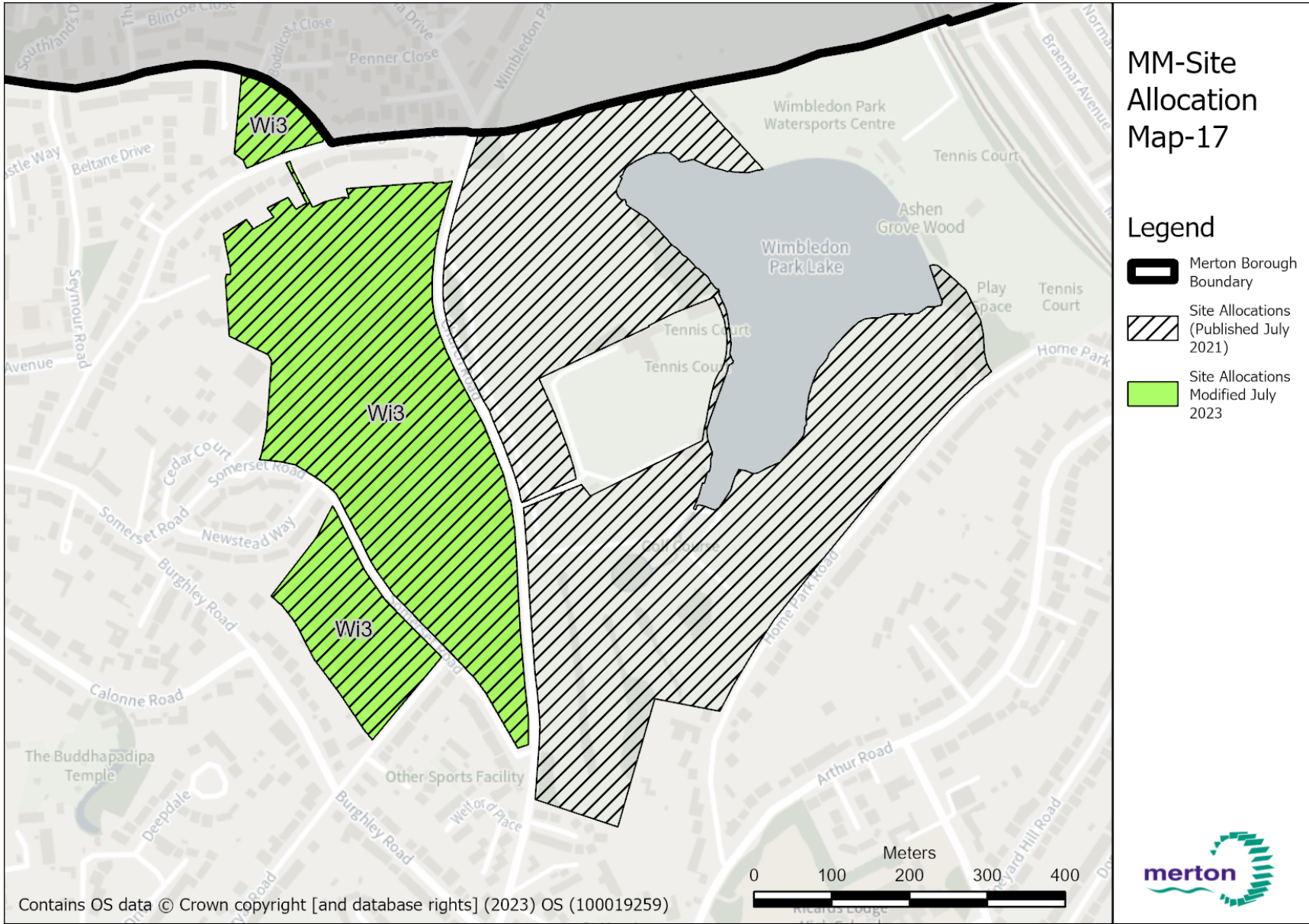
## MM-Wandle Trail proposed 'missing link' route-Map-13













# MM-SAC Map

