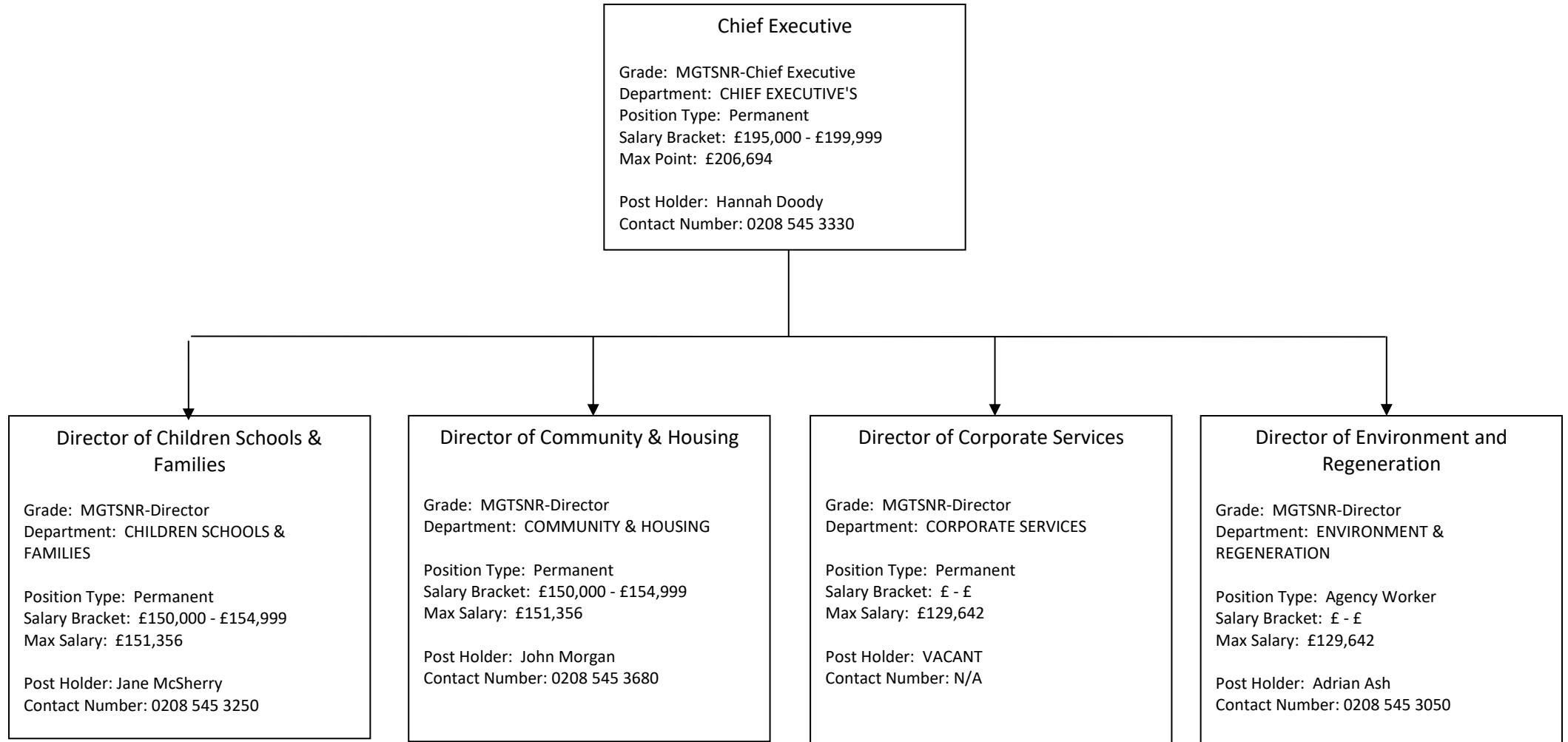
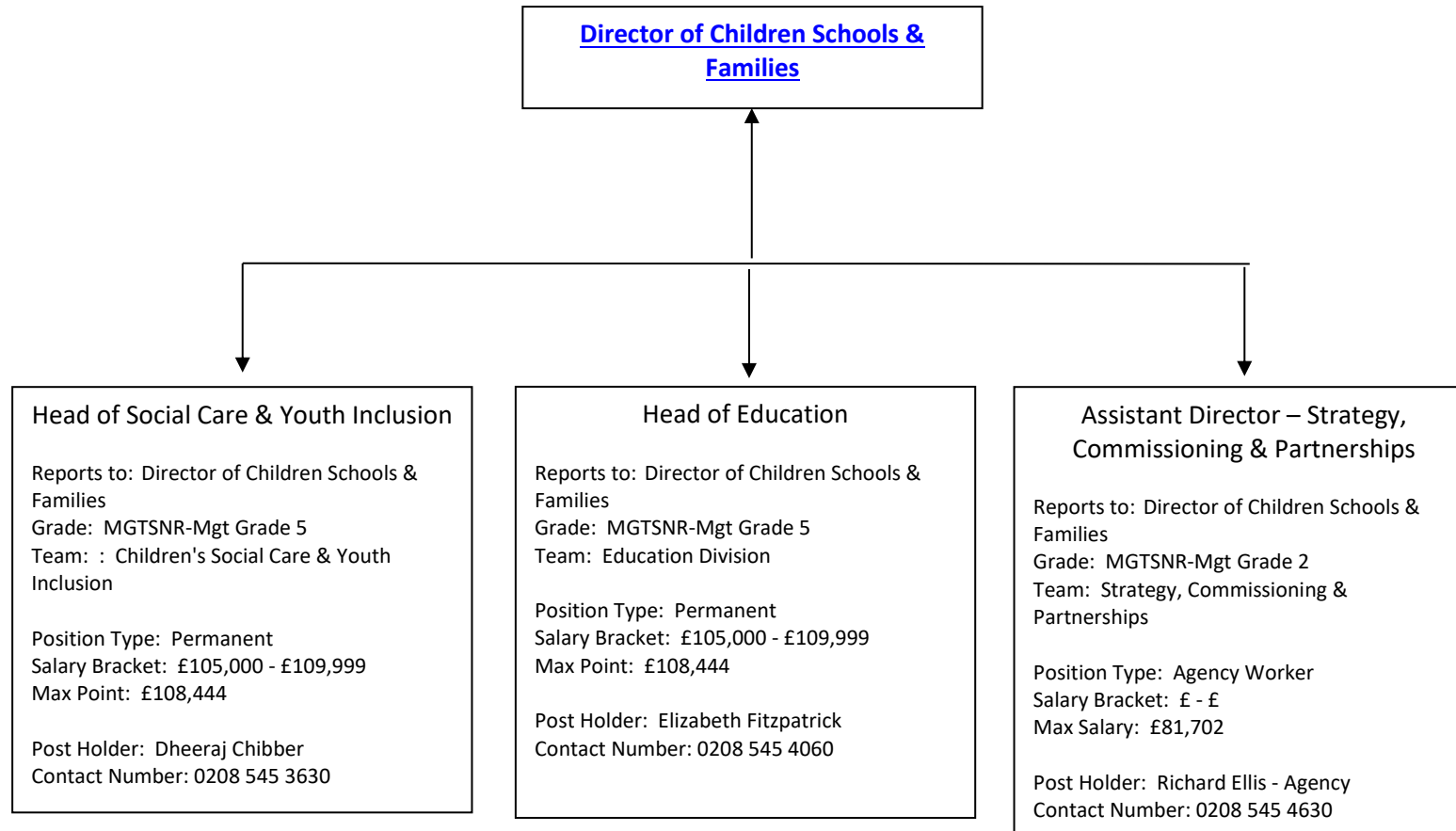


Top Tier Management Chart 2023-24



Second Tier Management Chart
Department: Children Schools and Families



Second Tier Management Chart
Department: Community and Housing

Director of Community & Housing

Assistant Director Adult Social Care
Reports to: Director of Community & Housing
Grade: MGTSNR-Mgt Grade 5
Team: Adult Social Care
Position Type: Agency Worker
Salary Bracket: £ - £
Max Salary: £104,637
Post Holder: Graham Terry - Agency
Contact Number: 0208 545 4442

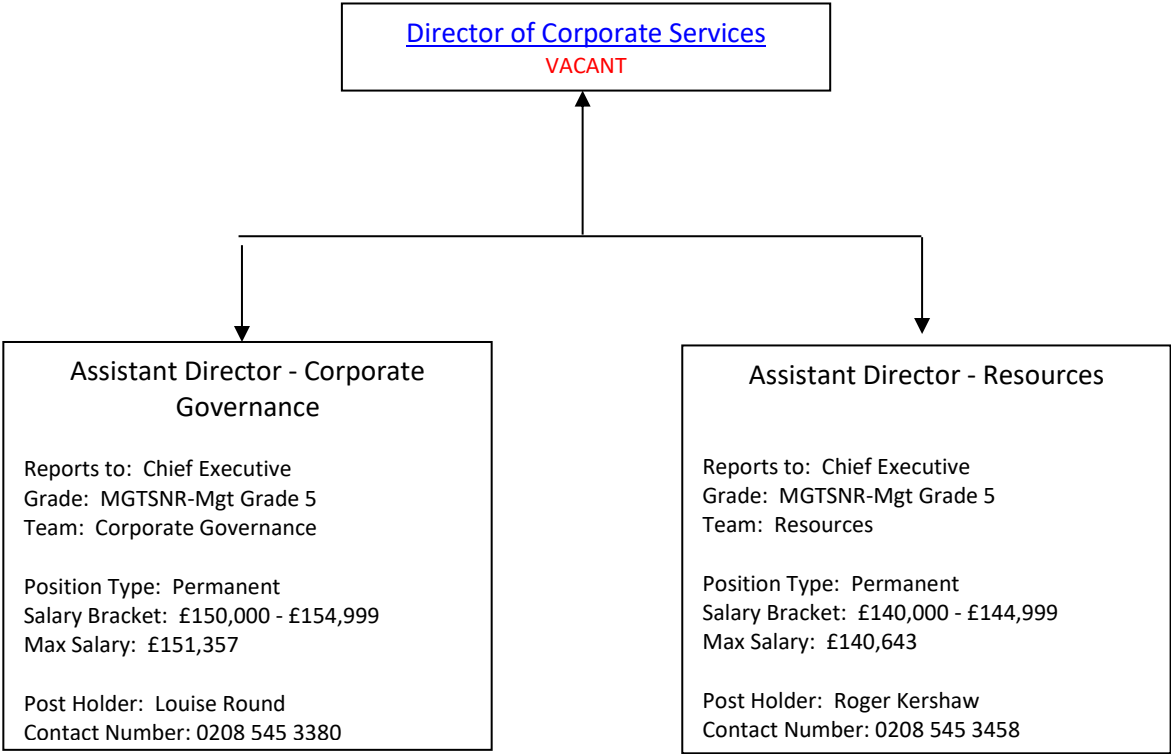
Assistant Director for Community & Housing Commissioning
Reports to: Director of Community & Housing
Grade: MGTSNR-Mgt Grade 5
Team: Adult Social Care
Position Type: Temporary Secondee
Salary Bracket: £100,000 - £104,999
Max Point: £104,637
Post Holder: Name Withheld
Contact Number: Not Known

Head of Library, Adult Education & Heritage Services
Reports to: Director of Community & Housing
Grade: MGTSNR-Mgt Grade 2
Team: Libraries, Heritage & Adult Education Service
Position Type: Permanent
Salary Bracket: £80,000 - £84,999
Max Point: £81,702
Post Holder: Name Withheld
Contact Number: 0208 545 3770

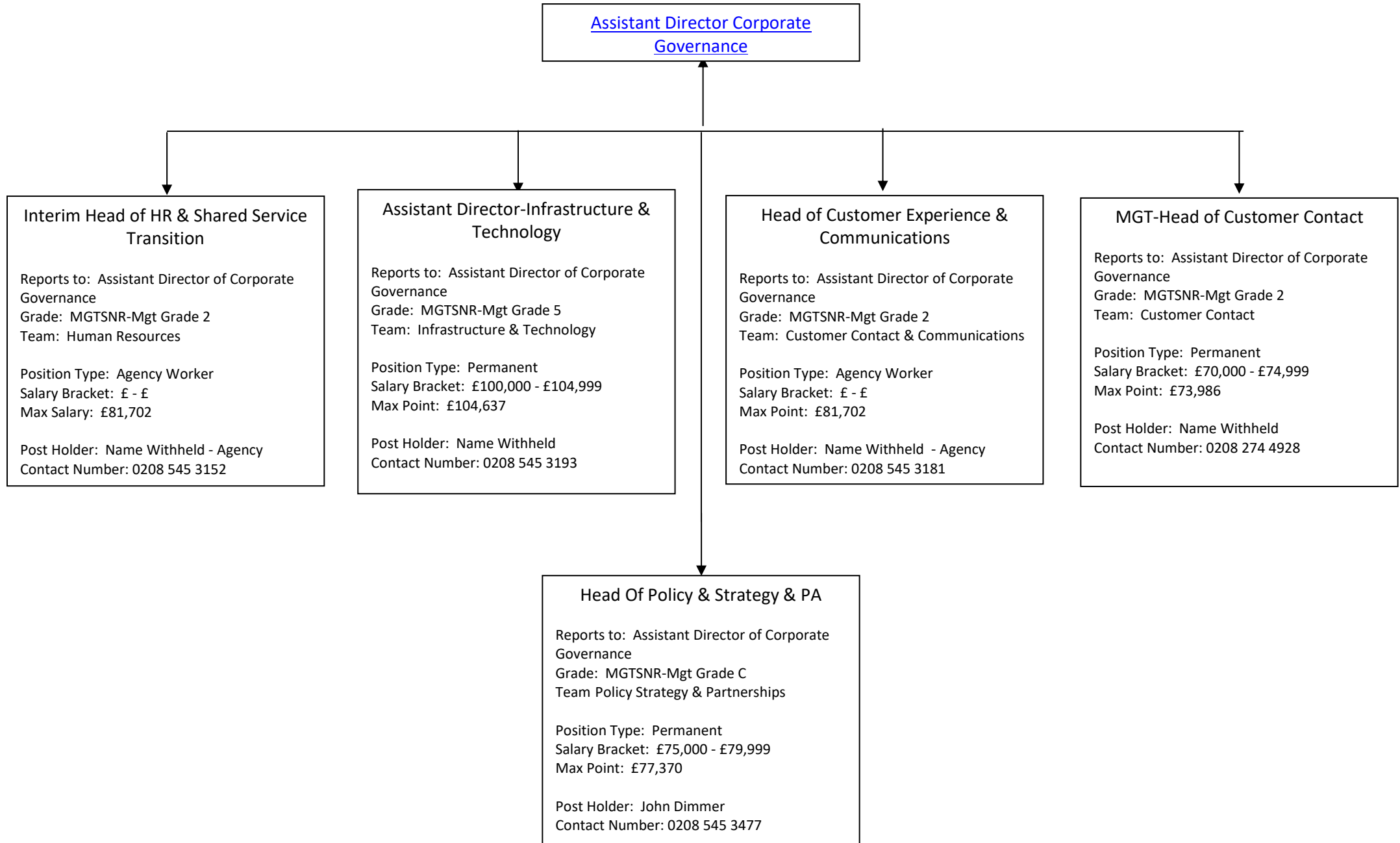
Director of Public Health-Merton
Reports to: Director of Community & Housing
Grade: NHSVSM-Very Senior Manager
Team: Public Health Team
Position Type: Permanent
Salary Bracket: £125,000 - £129,999
Max Salary: £129,489.12
Post Holder: Dagmar Zeuner
Contact Number: 0208 545 4836

Head of Housing & Strategy
Reports to: Director of Community & Housing
Grade: MGTSNR-Mgt Grade 2
Team: Housing Needs
Position Type: Fixed Term
Salary Bracket: £75,000 - £79,999
Max Point: £81,702
Post Holder: Elliot Brunton
Contact Number: 0208 545 3903

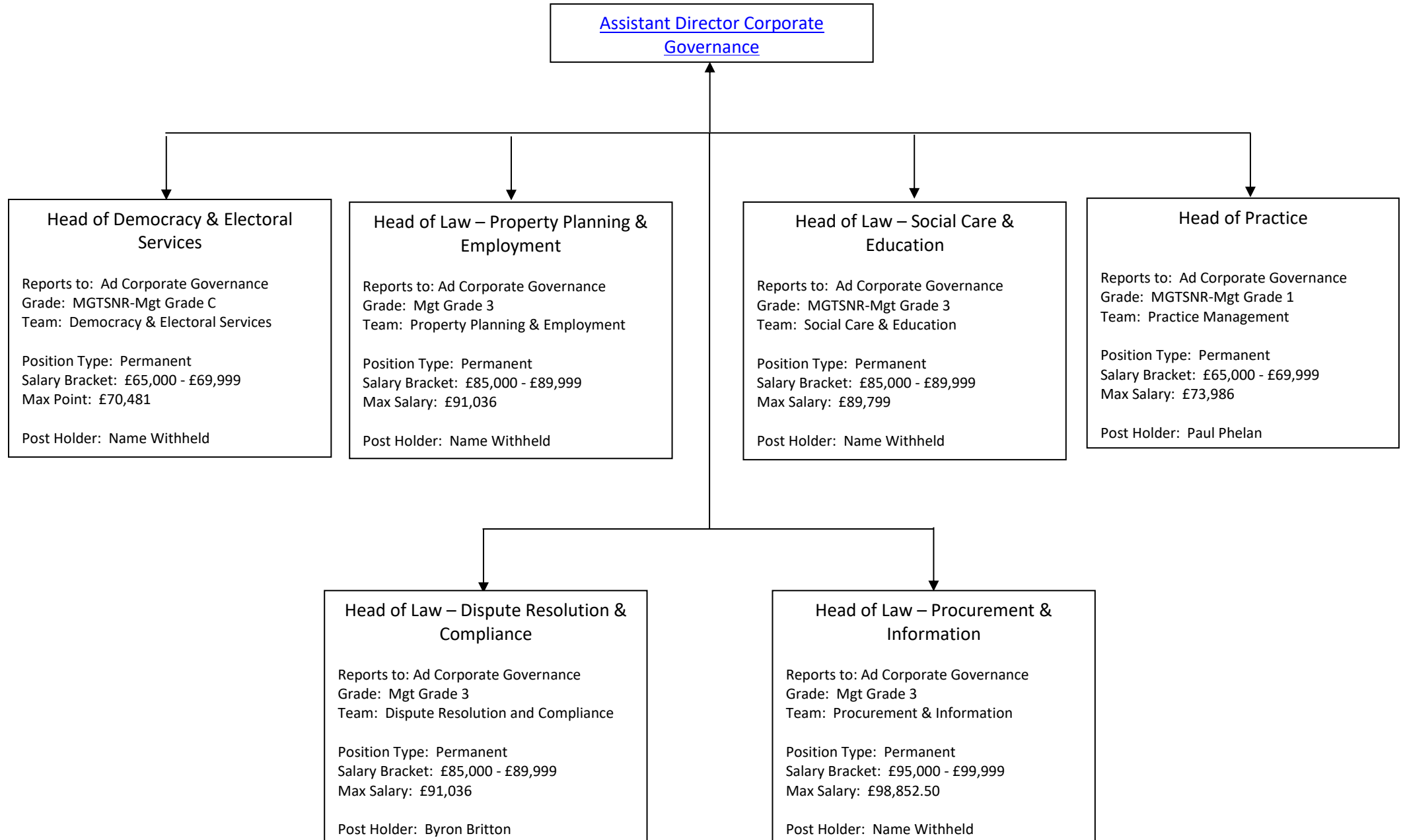
Second Tier Management Chart
Department: Corporate Services



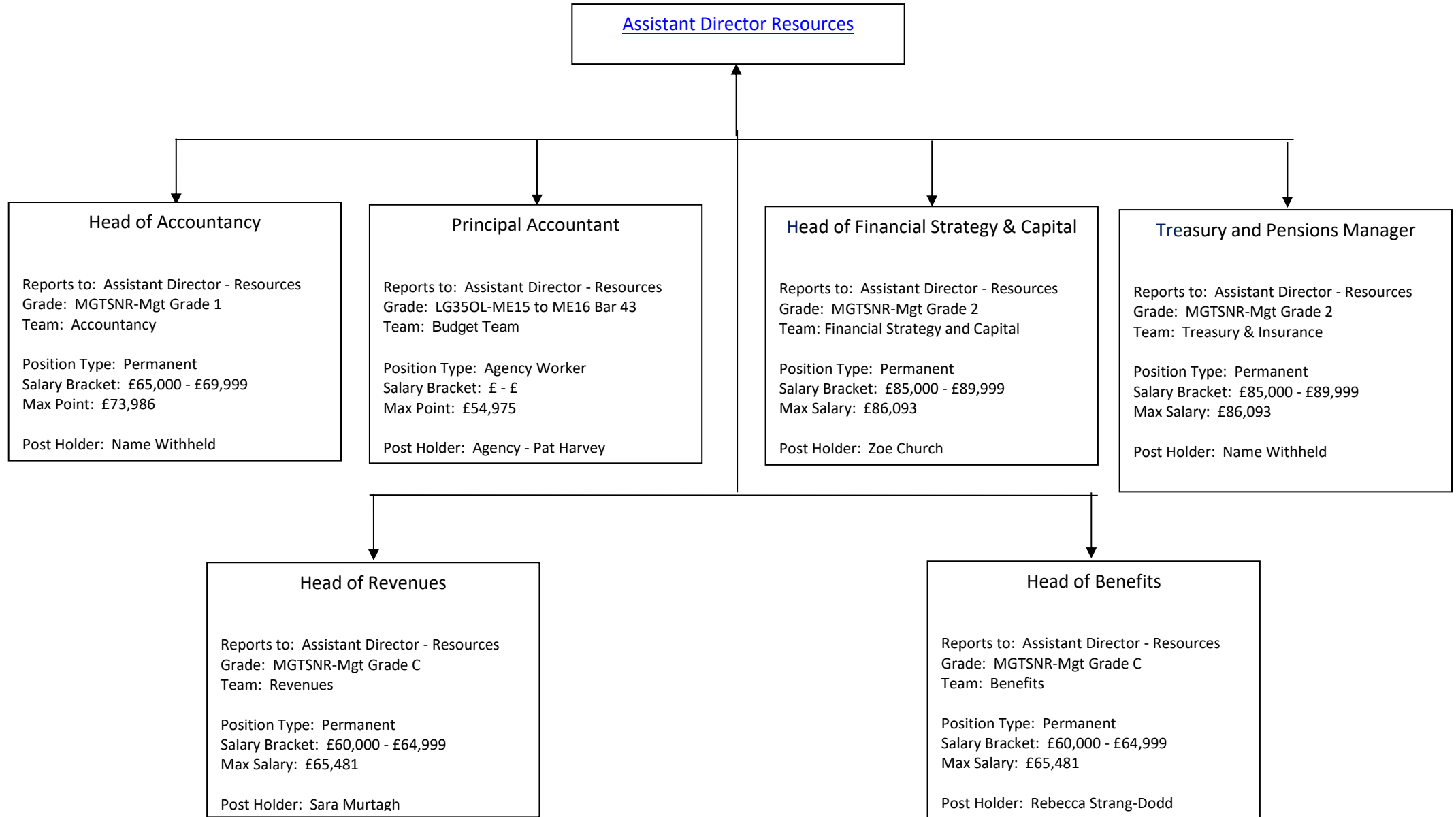
Second Tier Management Chart
Department: Corporate Services
Division: Corporate Governance



Second Tier Management Chart
Department: Corporate Services
Division: Corporate Governance



Second Tier Management Chart
Department: Corporate Services
Division: Resources



Second Tier Management Chart
Department: Environment and Regeneration

