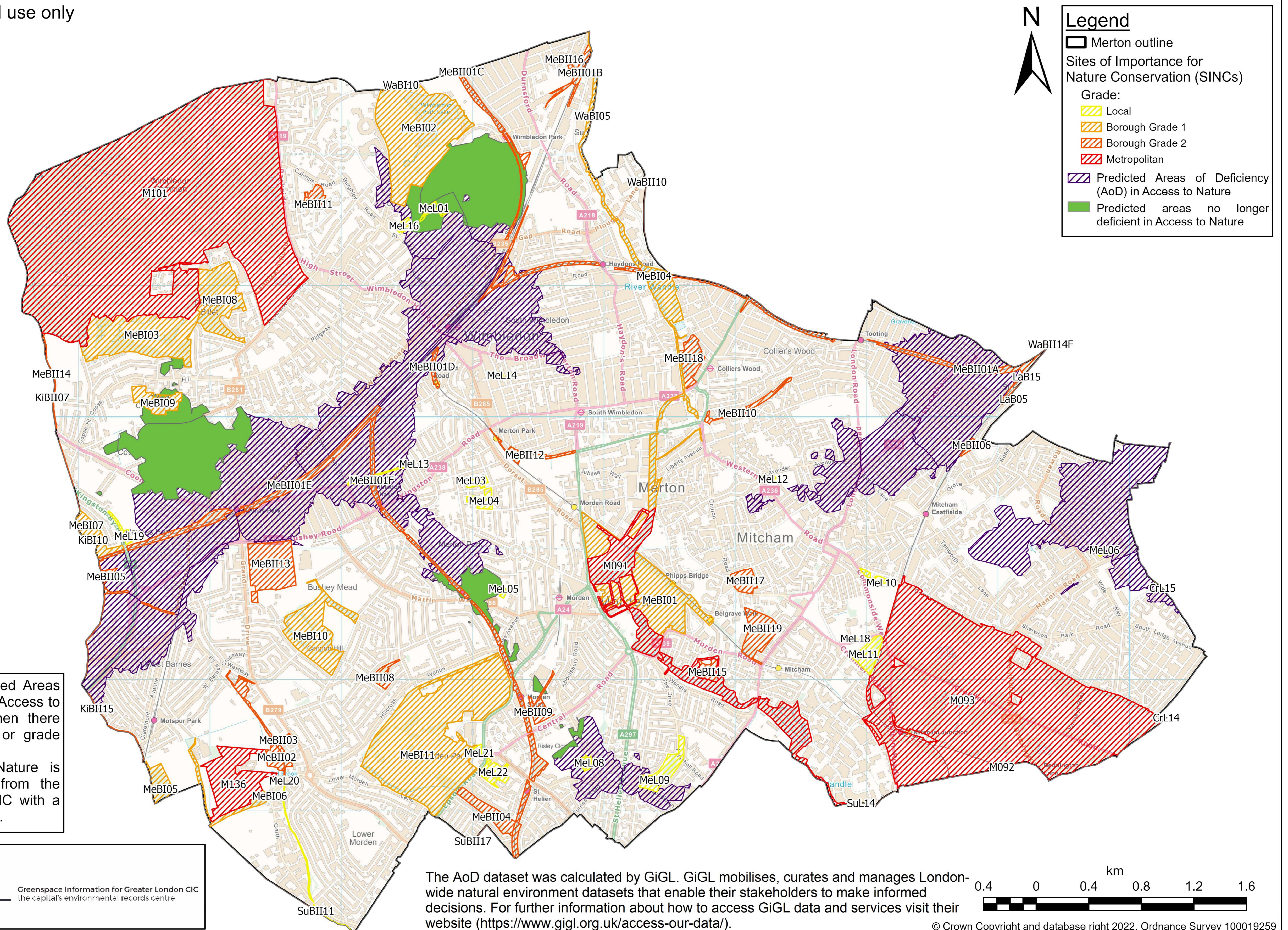


Predicted Change in Areas of Deficiency in Access to Nature within LB Merton

Produced by Greenspace Information for Greater London CIC on behalf of LB Merton, November 2022

For non-commercial use only



These are the predicted Areas of Deficiency (AoD) in Access to Nature for Merton when there have been boundary or grade changes to SINCs. AoD in Access to Nature is calculated as >1km from the access point of a SINC with a grade higher than local.

The AoD dataset was calculated by GiGL. GiGL mobilises, curates and manages London-wide natural environment datasets that enable their stakeholders to make informed decisions. For further information about how to access GiGL data and services visit their website (<https://www.gigl.org.uk/access-our-data/>).

