



## LONDON BOROUGH OF MERTON

### PROPOSED PROVISION OF A PEDAL CYCLE PARKING PLACE IN WIMBLEDON BRIDGE

#### **THE MERTON (PARKING PLACES) (PEDAL CYLES) (NO. \*) ORDER 202\***

1. NOTICE IS HEREBY GIVEN that the Council of the London Borough of Merton under the powers conferred by section 6 of the Road Traffic Regulation Act 1984 as amended, propose to make the above-mentioned Order.
2. The general effect of the 'Parking Places' Order would be to designate a parking place on the carriageway at the location specified in the Schedule to this Notice for the leaving of pedal cycles (including electric assisted pedal cycles) being used in a public hire scheme operated in accordance with an agreement with the Council.
3. A copy of the proposed Order and other documents giving more detailed particulars of the Order, including a plan which indicates the length of road to which the Order relates, can be inspected Monday to Friday during normal office hours at Merton Link, Merton Civic Centre, London Road, Morden, Surrey or at the Wimbledon Library, 35 Wimbledon Hill Road, Wimbledon, during opening hours.
4. Any person desiring to comment on the proposed Order should send a statement in writing of their representations or objections and the grounds thereof, to the Environment and Regeneration Department at the Merton Civic Centre, London Road, Morden, Surrey, SM4 5DX, or alternatively e-mail [trafficandhighways@merton.gov.uk](mailto:trafficandhighways@merton.gov.uk) quoting reference **ES/EV/2023/WimbBridge**, no later than **24 March 2023**.

Dated 2 March 2023.

Paul McGarry  
Head of futureMerton  
London Borough of Merton

#### **SCHEDULE**

WIMBLEDON BRIDGE, the north side, from a point 3.4 metres west of the party wall of Nos. 15 and 17 Wimbledon Bridge, eastward for a distance of 15 metres.



LONDON BOROUGH OF MERTON  
**TRAFFIC MANAGEMENT ORDER**

202\* No. \*

---

The Merton (Parking Places) (Pedal Cycles) (No. \*) Order 202\*

Made: \* 202\*

Coming into force: \* 202\*

---

ARRANGEMENT OF ARTICLES

PART I - PRELIMINARY

	<u>Article</u>
Citation and commencement	1
Interpretation	2

PART II - DESIGNATION OF PARKING PLACES

Designation of parking places	3
Vehicles for which parking places are designated	4

PART III - SUPPLEMENTARY PROVISIONS

Section 1 - General

Contravention in parking places	5
Removal of a vehicle from a parking place	6
Movement of a vehicle in a parking place in an emergency	7
Period for which a vehicle may be left in a parking place	8
Interval before a vehicle may again be left in a parking place	9
Manner of standing in a parking place	10
Power to suspend the use of a parking place	11

Restriction on the use of a vehicle in a parking place	12
Restriction on waiting by a vehicle in a parking place	13
Manner of waiting in a parking place	14
Installation of charging posts and parking places and placing of traffic signs	15
Schedule - Areas on streets designated as parking places	

The London Borough of Merton in exercise of the powers conferred by section 6 of the Road Traffic Regulation Act 1984(a), as amended by section 8 of and Part I of Schedule 5 to the Local Government Act 1985(b), and of all other powers thereunto enabling hereby make the following Order:

### PART I-PRELIMINARY

#### Citation and commencement

1. (1) This Order may be cited as the Merton (Parking Places) (Pedal Cycles) (No. \*) Order 202\* and shall come into force on \* 202\*.

#### Interpretation

2. (1) In this Order, except where the context otherwise requires, the following expressions have the meanings hereby respectively assigned to them:

“article” means an article of this Order so numbered;

“carriageway” has the same meaning as in section 329(1) of the Highways Act 1980(c);

"civil enforcement officer" means a civil enforcement officer provided by the Council under section 76(1) of the Traffic Management Act 2004(d), in relation to parking contraventions;

“cause” includes permit and “causing” shall be construed accordingly;

"Council" means the Council of the London Borough of Merton;

"electronic communications network" has the same meaning as in the Communications Act 2003(e);

"parking place", means any area on street designated a parking place reserved for pedal cycles by this Order;

“pedal cycle” has the same meaning as in the Traffic Signs Regulations and General Directions 2016(f);

"Schedule" means a Schedule of this Order;

---

(a) 1984 c.27    (b) 1985 c.51    (c) 1980 c.66    (d) 2004 c.18    (e) 2003 c.21    (f) SI 2016No. 362

"street" includes part of a street;

"traffic sign" has the same meaning as in section 64 of the Road Traffic Regulation Act 1984;

"vehicle" includes any part of a vehicle.

- (2) Any reference in this Order to any enactment shall be construed as a reference to that enactment as amended, applied, consolidated, re-enacted by or as having effect by virtue of any subsequent enactment.
- (3) Any reference in this Order to a numbered Article or Schedule shall, unless the context otherwise requires, be construed as a reference to the Article or Schedule bearing that number of this Order.

## PART II - DESIGNATION OF PARKING PLACES

### Designation of parking places

3. Each area on a street comprising the length of carriageway of a street specified in column 2 of the Schedule and, unless otherwise so specified, bounded on one side of that length by the edge of the carriageway and having a width throughout of 2.00 metres is designated as a pedal cycle hire parking place.

### Vehicles for which parking places are designated

4. (1) Each pedal cycle hire parking place described in the Schedule may be used, subject to the provisions of this Order, for the leaving of pedal cycles, including electric assisted pedal cycles, being used in a public hire scheme operated in accordance with an agreement with the Council.
- (2) Subject to the provisions of paragraph (3) of this Article and Article 13, no person shall cause any vehicle to stop at any time on a pedal cycle hire parking place.
- (3) Notwithstanding the foregoing provisions of this Order, the restriction specified in paragraph (2) of this article shall not apply to any pedal cycle, including any electrically assisted pedal cycle, being used in a public hire scheme operated in accordance with an agreement with the Council.

## PART III - SUPPLEMENTARY PROVISIONS

### Contravention in parking places

5. If a vehicle is left in a parking place referred to in the Schedule to this Order without complying with the provisions of this Order, then a contravention of, or a failure to comply with the provisions of this Order and a parking contravention within Part 1 of Schedule 7 to the Traffic Management Act 2004 shall be deemed to have occurred.

### Removal of a vehicle from a parking place

6. If a vehicle is left at a parking place without complying with the provisions of this Order, the vehicle may be removed or caused to be removed from that parking place in pursuance of Regulations made under section 99 or 101 of the Road Traffic Regulation Act 1984.

Movement of a vehicle in a parking place in an emergency

7. A police constable in uniform or a civil enforcement officer may move or cause to be moved, in case of emergency, to any place they think fit, any vehicle left at a parking place.

Period for which a vehicle may be left at a parking place

8. N/A

Interval before a vehicle may again be left in a parking place

9. N/A

Manner of standing in a parking place

10. Every vehicle left in a parking place in accordance with the foregoing provisions of this Order shall so stand so that every part of the vehicle is within the limits of a parking place.

Power to suspend the use of a parking place

11. (1) The Commissioner of Police of the Metropolis or any police officer above the rank of Chief Inspector may suspend the use of a parking place or any part thereof for a period not exceeding twenty-eight days whenever he considers such suspension necessary for maintaining the security of any person or premises in the vicinity of that parking place.
- (2) At the expiration of the period of twenty-eight days mentioned in paragraph (1) of this Article, the suspension of the parking place or any part thereof shall be reviewed by the person who suspended its use and any continuation of the suspension that they consider necessary shall be notified to the Council and shall not exceed a further period of twenty-eight days without similar review.
- (3) Any person duly authorised by the Council may suspend the use of a parking place or any part thereof whenever they consider such suspension reasonably necessary:-
- (a) for the purpose of facilitating the movement of traffic or promoting its safety; or
  - (b) on any occasion on which it is likely, by reason of some special attraction or occurrence, that any street will be thronged or obstructed; or
  - (c) for the purpose of any building operation, demolition or excavation adjacent to the parking place, the maintenance, improvement or reconstruction of the highway or the cleansing of gullies in or adjacent to the parking place, the laying, erection alteration or repair in or adjacent to the parking place of any sewer or of any main, pipe or apparatus for the supply of gas, water or electricity or of any electronic communications network or the placing, maintenance or removal of any traffic sign; or
  - (d) for the convenience of occupiers of premises adjacent to the parking place on any occasion of the removal of furniture to or from one office or dwelling-house adjacent to the parking place from or to a depository, or another office or dwelling-house; or
  - (e) for the convenience of occupiers of premises adjacent to the parking place at times of weddings or funerals, or on other special occasions; or

- (f) on any occasion on which it is likely by reason of some special attraction that any street will be thronged or obstructed;
  - (g) for filming purposes.
- (4) A police constable in uniform may suspend for not longer than seven days the use of a parking place or any part thereof whenever he considers such suspension reasonably necessary;
- (a) for the purpose of facilitating the movement of traffic or promoting its safety; or
  - (b) on any occasion on which it is likely, by reason of some special attraction or occurrence, that any street will be thronged or obstructed.
- (5) On the suspension of the use of a parking place or any part thereof in accordance with the provisions of this Article, the person authorising or causing such suspension shall place or cause to be placed in or adjacent to that parking place or that part thereof, as the case may be, a traffic sign indicating that waiting by vehicles is prohibited.
- (6) No person shall wait in a parking place or any part thereof at any time during which there is displayed in or adjacent to that parking place or that part thereof, as the case may be, a traffic sign placed in pursuance of paragraph (5) of this Article:

Provided that nothing in this paragraph shall apply:-

- (a) in respect of any vehicle being used for ambulance, fire brigade or police purposes or any vehicle which is waiting for any reason specified in Article 13(1)(a) or 13(1)(c) or 13(1)(e);
- (b) to anything done with the permission of the person suspending the use of the parking place or part thereof in pursuance of paragraph (1) of this Article, or as the case may be, paragraph (3) of this Article, a police constable in uniform or a civil enforcement officer.

#### Restriction on the use of a vehicle in a parking place

12. During the permitted hours no person shall use any parking place or any vehicle while it is in a parking place in connection with:
- (a) the sale or offering or exposing for sale of any goods to any person in or near the parking place or in connection with the selling or offering for sale of their skill in handicraft or their services in any other capacity; or
  - (b) the carrying out of any work or construction or repair of any vehicle, except such as may be necessary to enable the vehicle to be removed from the parking place.

#### Restriction on waiting by a vehicle in a parking place

13. (1) Notwithstanding the foregoing provisions of this Order any vehicle may wait during the permitted hours in any part of a parking place if the use of that part has not been suspended and if:
- (a) the vehicle is waiting owing to the driver being prevented from proceeding by circumstances beyond his control or to such waiting being necessary in order to avoid an accident;
  - (b) the vehicle is being used for fire brigade, ambulance or police purposes or, not being a passenger vehicle, is being used in the service of a local authority in pursuance of statutory powers or duties provided that in all the circumstances it is reasonably necessary in the

exercise of such powers or in the performance of such duties for the vehicle to wait in the place in which it is waiting;

- (c) the vehicle is waiting only for so long as may be necessary to enable it to be used in connection with the removal of any obstruction to traffic;
  - (d) the vehicle not being a passenger vehicle is waiting only for so long as may be reasonably necessary to enable it to be used for any purpose specified in Article 11(3)(c) of this Order;
  - (e) the vehicle is waiting with the written consent of the Council or authorised agent and such conditions and requirements as they may impose are being complied with.
- (2) Nothing in the foregoing provisions of this Order shall be taken as authorising anything which would be a contravention of any Regulations made or having effect as if made under section 25 of the Road Traffic Regulations Act 1984.

#### Manner of waiting in a parking place

14. No person shall cause or permit a vehicle to wait in a parking place by virtue of the provisions of subparagraph (d) of paragraph (1) of the last preceding Article otherwise than:
- (a) so that the longitudinal axis of the vehicle is parallel to the edge of the carriageway nearest to the vehicle and the distance between the said edge and the nearest wheel of the vehicle is not more than 30 centimetres; and
  - (b) so that no part of the vehicle obstructs any vehicular means of ingress to or egress from any premises adjacent to the side of the road on which the vehicle is waiting.

#### Installation of charging posts and parking places and placing of traffic signs

15. The Council shall:
- (a) install a charging post in such position as they think fit in or in the vicinity of each parking place referred to in the Schedule;
  - (b) place and maintain traffic signs indicating the limits of each parking place;
  - (c) place and maintain in or in the vicinity of each parking place traffic signs indicating that such parking place may be used for the leaving only of the vehicles specified in Article 4 of this Order; and
  - (d) carry out such other work as is reasonably required for the purposes of the satisfactory operation of a parking place.

Dated this the \* day of \* 202\*.

Paul McGarry  
Head of futureMerton  
London Borough of Merton

SCHEDULE (see Article 3)

In relation to a parking place described in this Schedule the expression "permitted hours" means at any time.

PARKING PLACES IN RESPECT OF WHICH A PEDAL CYCLE FOR HIRE, INCLUDING AN ELECTRICALLY ASSISTED PEDEAL CYCLE FOR HIRE, MAY BE LEFT AT ANY TIME.

1	2
No. of Parking Place	AREAS ON CARRIAGEWAYS DESIGNATED AS PARKING PLACES Each area described below is a designated parking place
*.	WIMBLEDON BRIDGE, the north side, from a point 3.4 metres west of the party wall of Nos. 15 and 17 Wimbledon Bridge, eastward for a distance of 15 metres.

EXPLANATORY NOTE

(This note is not part of the Order but is intended to indicate its general purport.)

This Order designates parking places reserved for the pedal cycles for hire, including electrically assisted pedal cycles for hire in various roads the London Borough of Merton.



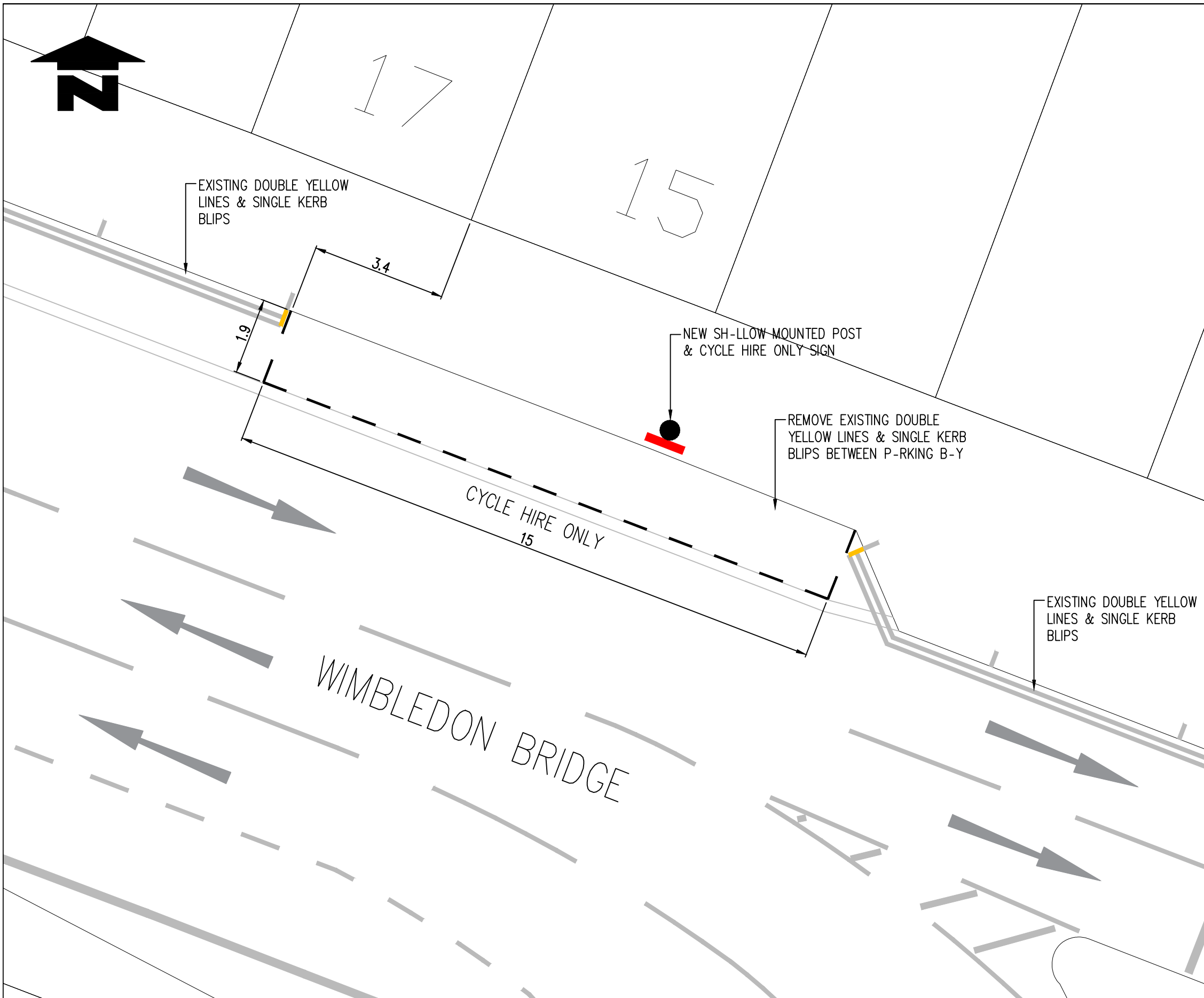


**LONDON BOROUGH OF MERTON**

**PROPOSED PROVISION OF A PEDAL CYCLE PARKING PLACE IN WIMBLEDON  
BRIDGE**

**THE MERTON (PARKING PLACES) (PEDAL CYCLES) (NO. \*) ORDER 202\***

The above Order is considered necessary as through the use of a dedicated location pedal cycle hire users will know where to hire and return pedal cycles. The proposal will thereby avoid obstructive parking, particularly on the footway. The proposal will also further encourage switching from car ownership and use to more sustainable modes of travel.



Definition:  
 From a point 3.4m west of party wall of Nos. 15 and 17 Wimbledon Bridge, eastwards for a distance of 15m

**Notes**  
 Do not scale from this drawing

Rev	Revisions	Drawn	Sig.	Date	Chkd.	Sig.	Date	App.	Sig.	Date


**Sustainable Communities**  
 environment & regeneration

FUTURE MERTON

Reproduced from/based upon the Ordnance Survey's 1:1250 maps with the permission of the Controller of H.M.S.O., Crown Copyright Reserved. Unauthorised reproduction infringes Crown copyright and may lead to prosecution or civil proceedings. London Borough of Merton 100019259 2005

Drawn by	Sig.	Date
JG		170123
Checked by	Sig.	Date
Approved by	Sig.	Date

**PROJECT** Cycle Hire Bays (Z96)  
**TITLE** WIMBLEDON BRIDGE CYCLE HIRE ONLY BAYS

  
 Merton Civic Centre  
 London Road  
 Morden, Surrey  
 SM4 5DX  
 www.merton.gov.uk

Drawing No.	Z96-01-01
Revision	A
Classification	CONSULTATION
Scale	1:00