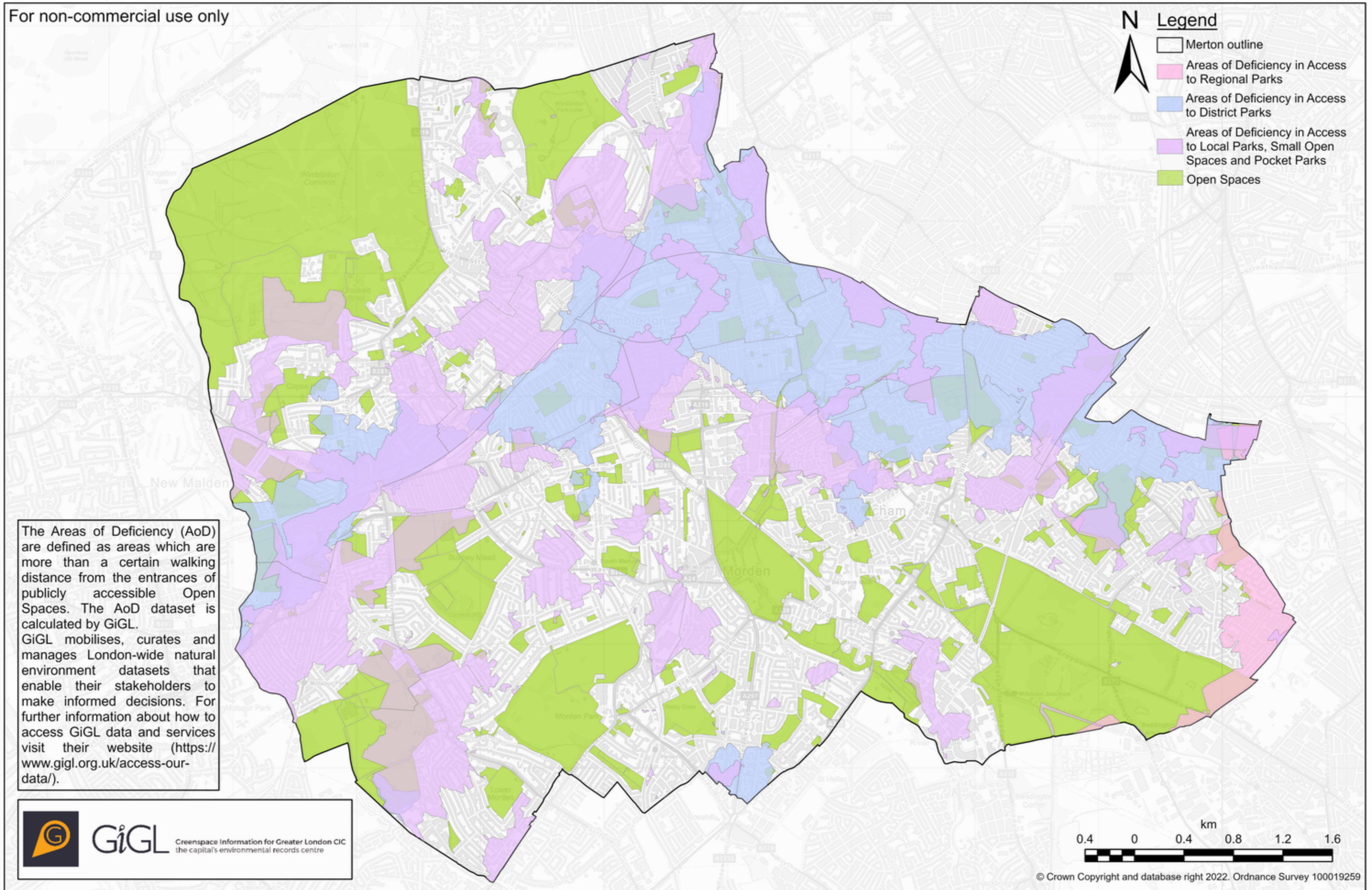


Areas of Deficiency in Access to Public Open Space within LB Merton

Produced by Greenspace Information for Greater London CIC (GiGL) on behalf of LB Merton, January 2023

For non-commercial use only



The Areas of Deficiency (AoD) are defined as areas which are more than a certain walking distance from the entrances of publicly accessible Open Spaces. The AoD dataset is calculated by GiGL. GiGL mobilises, curates and manages London-wide natural environment datasets that enable their stakeholders to make informed decisions. For further information about how to access GiGL data and services visit their website (<https://www.gigl.org.uk/access-our-data/>).

