



**Description**  
 On the east side. From a point 2.5 meters north of a point in line with the northern flank wall of the block of flats, 37-47 Sycamore Road, northward for a distance of 6 metres.

EV sign to go on lamp column 3

- KEY**
- EV Electrical charging bay
  - New post
  - Crossovers
  - Permit holder bay
  - Shared use bay
  - Lamp Column

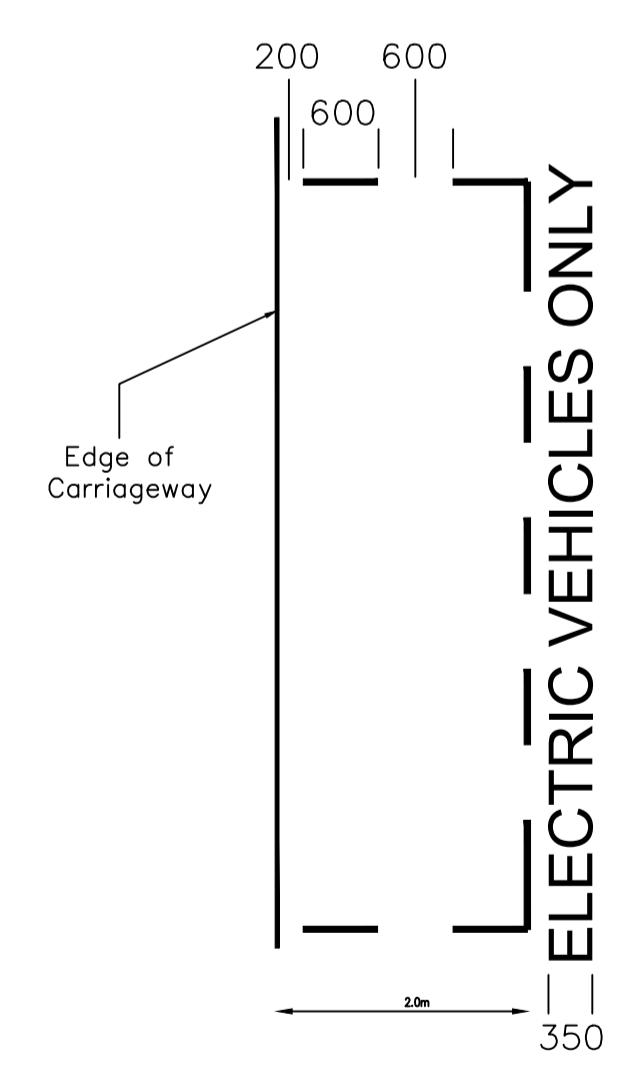
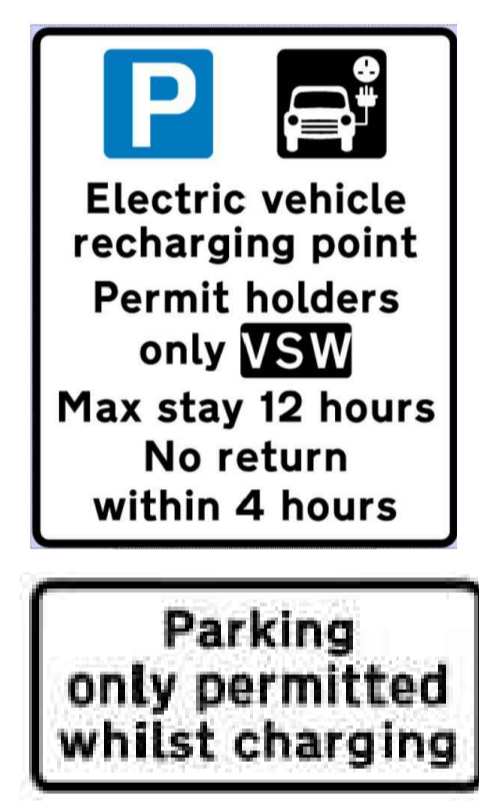
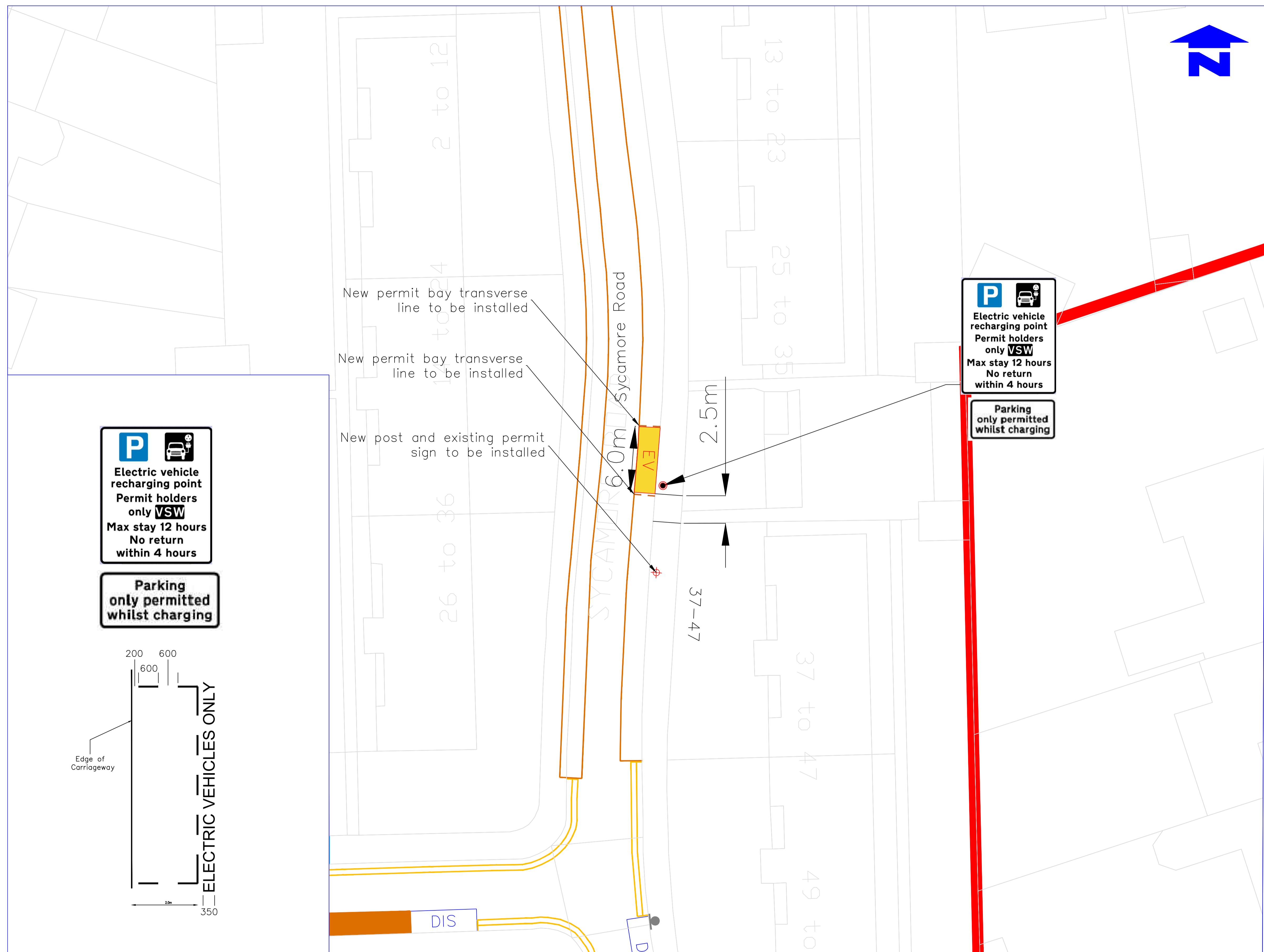
**Note**

Main sign to have an x-height of 20mm

Subplate to have an x-height of 15mm

New post with relocated permit holder sign to go in 6 metres south of EV bay

BATCH 13



**Notes**  
 Do not scale from this drawing

Rev.	Revisions	Drawn	Sig.	Date	Chkd.	Sig.	Date	App.	Sig.	Date

ENVIRONMENT  
 CIVIC PRIDE AND CLIMATE  
 DEPARTMENT

FUTURE MERTON

PROJECT  
**LAMP COLUMN EV  
 CHARGING BAYS**

TITLE  
 37 - 47 Sycamore Road  
 Wimbledon, SW19 4TR (Zone VSW)



Drawing No.  
 Z30-013-09

Revision

Classification  
 CONSTRUCTION

Scale  
 1:500