










DO NOT SCALE

DESCRIPTION

ON THE NORTH-WESTERN SIDE, FROM A POINT 0.3 METRES NORTHEAST OF THE SOUTH-WESTERN FLANK WALL OF NO 32 WILTON CRESCENT, SOUTHWESTWARDS FOR A DISTANCE OF 5 METRES.

REMOVE SHARED USE SIGN FROM EXISTING POST AND RELOCATE. ATTACH NEW CYCLE HIRE SIGN. INSTALL NEW POST AND ATTACH RELOCATED SHARED USE SIGN

KEY

-  EXISTING KERB
-  EXISTING ROAD MARKING
-  EXISTING ROAD MARKING TO BE REMOVED
-  PROPOSED ROAD MARKING
-  BUILDING REFERENCE LINE
-  PROPOSED SIGN AND POST
-  EXISTING SIGN AND POST

P01	21/02/2025	MM	FIRST ISSUE	CM	CM
REV	DATE	BY	DESCRIPTION	CHK	APP

DRAWING STATUS: **S2 - FOR INFORMATION**



WSP House, 70 Chancery Lane, London, WC2A 1AF, UK
T+ 44 (0) 207 314 5000, F+ 44 (0) 207 314 5111
wsp.com



PROJECT: **MERTON DOCKLESS BIKE HIRE PARKING BAYS**

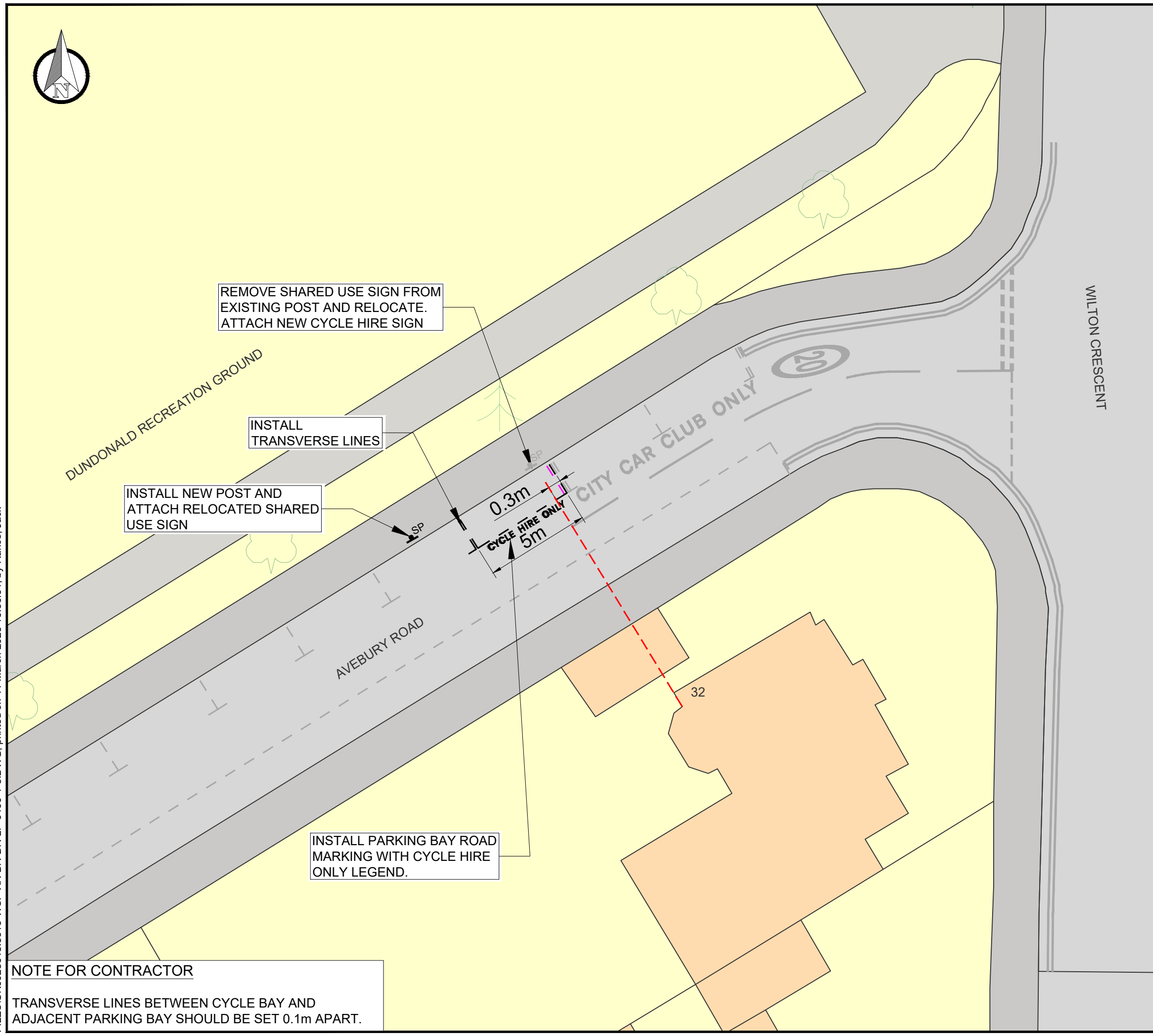
TITLE: **AVEBURY ROAD (NEXT TO THE CAR CLUB BAY)
WIMBLEDON, SW19 3RA
CPZ - 5F (DUNDONALD)**

SCALE @ A3: 1:200	CHECKED: CM	APPROVED: CM
----------------------	----------------	-----------------

PROJECT No: UK0028648.3916	DESIGNED: MM	DRAWN: MM	DATE: February 25
-------------------------------	-----------------	--------------	----------------------

DRAWING No: DD-21 - AVEBURY ROAD	REV: P01
--	--------------------

© WSP UK Ltd



NOTE FOR CONTRACTOR

TRANSVERSE LINES BETWEEN CYCLE BAY AND ADJACENT PARKING BAY SHOULD BE SET 0.1m APART.

File name C:\USERS\JACK.RANCE\WSP_0365\MERTON DOCKLESS CYCLE HIRE BAYS - TEMP DOCUMENT UPLOAD\01 - DRAWINGS\CPZ ZONES - BATCH 4\CAD FILES\UK0028648.3916-WSP-XX-BR-DR-LP-0100-1-8.DWG, printed on 11 March 2025 16:06:01, by Rance, Jack