

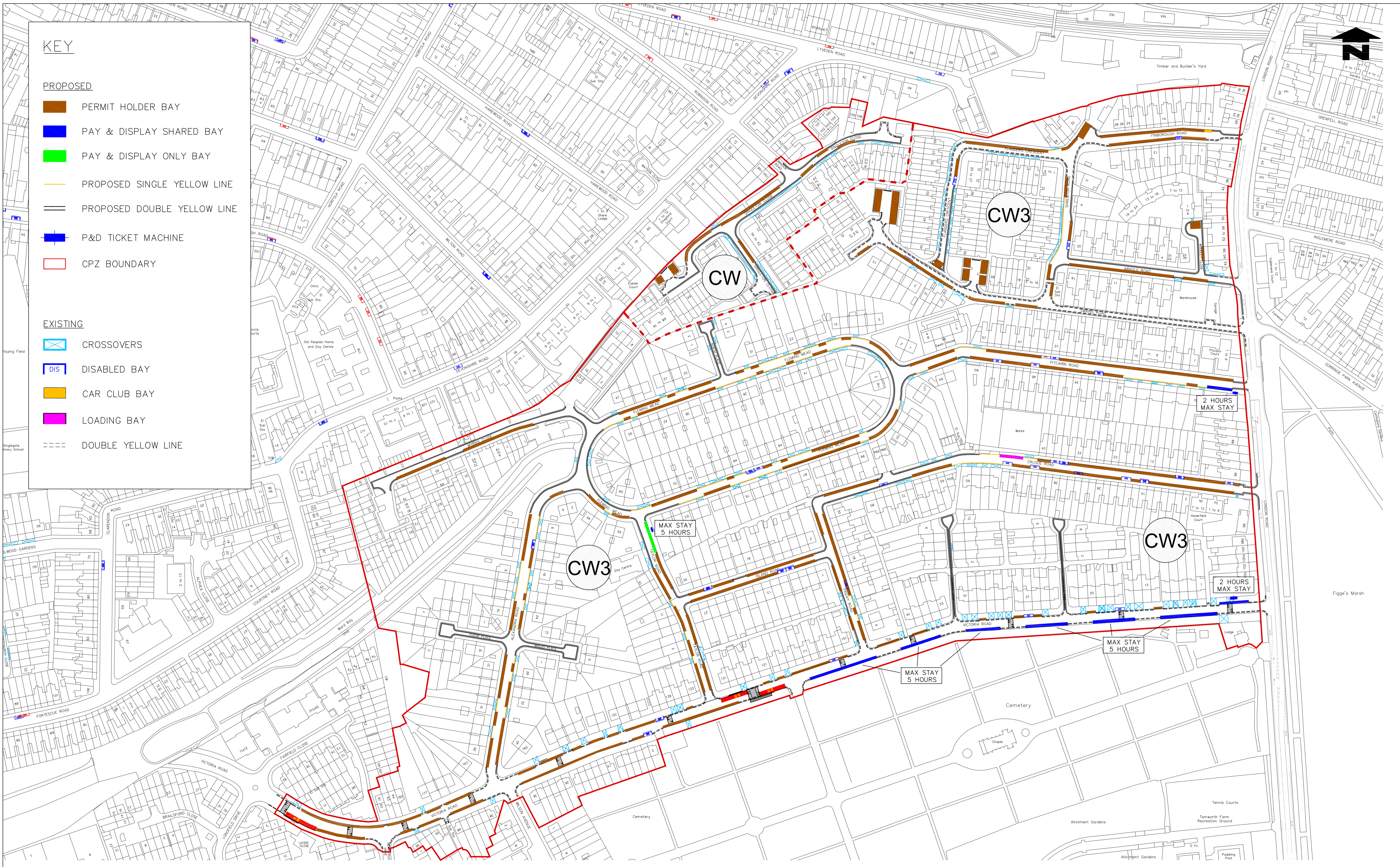
KEY

PROPOSED

- PERMIT HOLDER BAY
- PAY & DISPLAY SHARED BAY
- PAY & DISPLAY ONLY BAY
- PROPOSED SINGLE YELLOW LINE
- PROPOSED DOUBLE YELLOW LINE
- P&D TICKET MACHINE
- CPZ BOUNDARY

EXISTING

- CROSSOVERS
- DISABLED BAY
- CAR CLUB BAY
- LOADING BAY
- DOUBLE YELLOW LINE



Notes
Do not scale from this drawing

Rev.	Revisions	Drawn	Sig.	Date	Chkd.	Sig.	Date	App.	Sig.	Date

Sustainable Communities
environment & regeneration

TRAFFIC & HIGHWAYS

Reproduced from/based upon the Ordnance Survey's 1:1250 maps with the permission of the Controller of H.M.S.O., Crown Copyright Reserved. Unauthorized reproduction infringes Crown copyright © and may lead to prosecution or civil proceedings. London Borough of Merton 100019259

Drawn by	Sig.	Date
SC		14 APR 2015
Checked by	Sig.	Date
Approved by	Sig.	Date

PROJECT
Controlled Parking Zones (CPZ's)

TITLE
CW3 Colliers Wood East Proposed Layout

merton
Merton Civic Centre
London Road
Morden, Surrey
SM4 5DX
www.merton.gov.uk

Drawing No.	Z78-231-01
Revision	A
Classification	CONSULTATION
Scale	1 : 1250