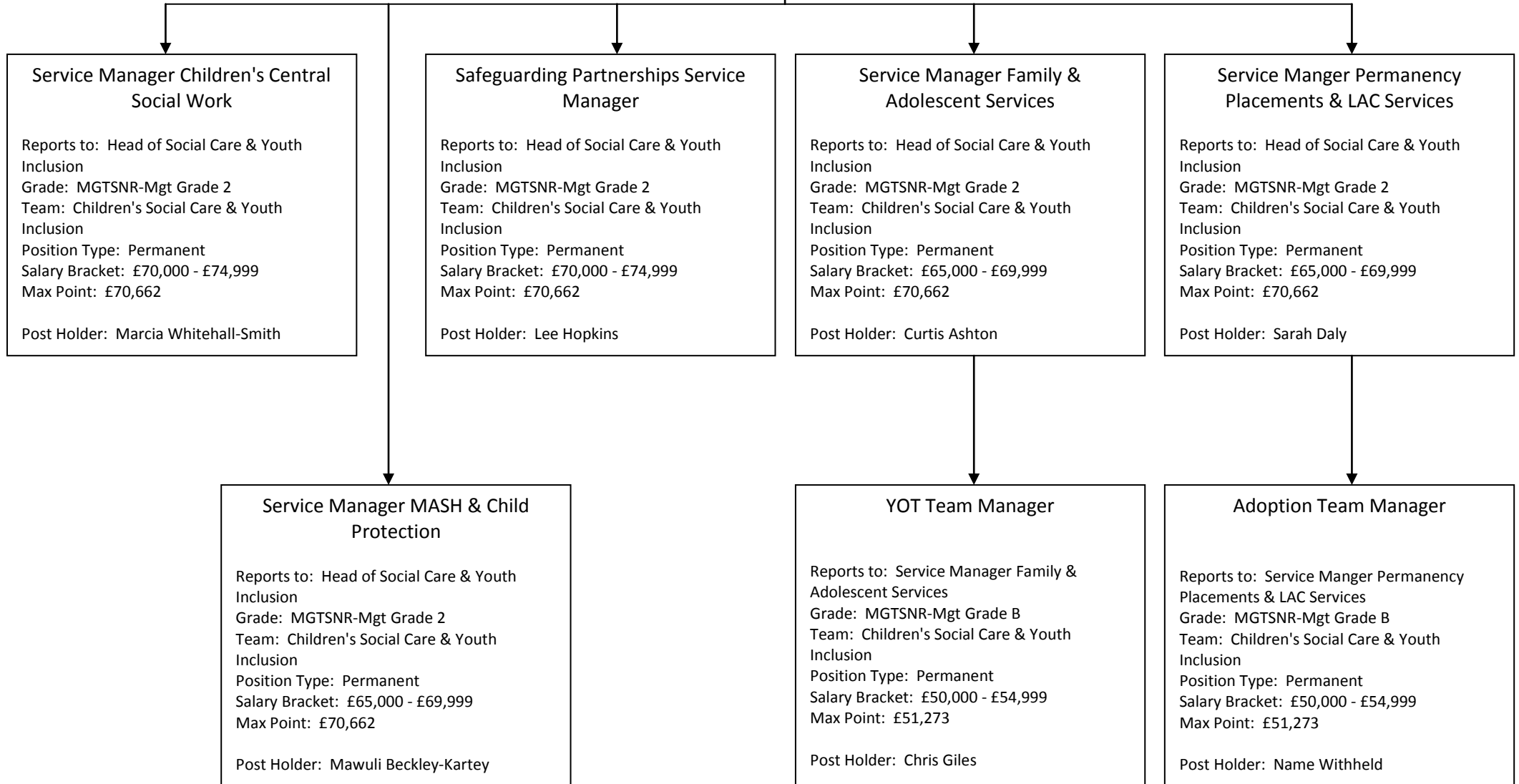


Third Tier Management Chart  
Department: Children Schools and Families  
Team: Children's Social Care & Youth Inclusion

Contact Number: 0208 274 4901

[Assistant Director of Children's Social  
Care & Youth Inclusion](#)



Third Tier Management Chart  
Department: Children Schools and Families  
Team: Commissioning, Strategy and Performance Division

Contact Number: 0208 274 4901

[Assistant Director of Commissioning  
Strategy & Performance](#)

**Service Manager Access To  
Resources**

Reports to: Head of C P & S  
Grade: MGTSNR-Mgt Grade 2  
Team: Commissioning, Strategy and  
Performance Division  
Position Type: Permanent  
Salary Bracket: £70,000 - £74,999  
Max Point: £70,662  
  
Post Holder: Liz Broughton

**Service Manager Contracts & School  
Organisation**

Reports to: Head of C P & S  
Grade: MGTSNR-Mgt Grade 2  
Team: Commissioning, Strategy and  
Performance Division  
Position Type: Permanent  
Salary Bracket: £70,000 - £74,999  
Max Point: £70,662  
  
Post Holder: Tom Procter

**Service Manager CSF Commissioning**

Reports to: Head of C P & S  
Grade: MGTSNR-Mgt Grade 2  
Team: Commissioning, Strategy and  
Performance Division  
Position Type: Permanent  
Salary Bracket: £65,000 - £69,999  
Max Point: £70,662  
  
Post Holder: Name Withheld

**Service Manager**

Reports to: Head of C P & S  
Grade: MGTSNR-Mgt Grade 2  
Team: Commissioning, Strategy and  
Performance Division  
Position Type: Permanent  
Salary Bracket: £65,000 - £69,999  
Max Point: £70,662  
  
Post Holder: Name Withheld

**Commissioning Manager**

Reports to: Service Manager CSF  
Commissioning  
Grade: MGTSNR-Mgt Grade B  
Team: Commissioning, Strategy and  
Performance Division  
Position Type: Permanent  
Salary Bracket: £50,000 - £54,999  
Max Point: £51,273  
  
Post Holder: Name Withheld

Third Tier Management Chart  
Department: Children Schools and Families  
Team: Education Division

Contact Number: 0208 274 4901

[Assistant Director of Education](#)

### Service Manager

Reports to: Head of Education  
Grade: MGTSNR-Mgt Grade 2  
Team: Education Division  
Position Type: Permanent  
Salary Bracket: £70,000 - £74,999  
Max Point: £70,662

Post Holder: Allison Jones

### Social Inclusion Manager

Reports to: Head of Education  
Grade: MGTSNR-Mgt Grade 2  
Team: Education Division  
Position Type: Permanent  
Salary Bracket: £70,000 - £74,999  
Max Point: £70,662

Post Holder: Keith Shipman

### Team Manager Continuous Improvement and Quality

Reports to: Service Manager  
Grade: MGTSNR-Mgt Grade B  
Team: Education Division  
Position Type: Permanent  
Salary Bracket: £50,000 - £54,999  
Max Point: £51,273

Post Holder: Tracy Clarke

### School Inclusion Co-Ordinator

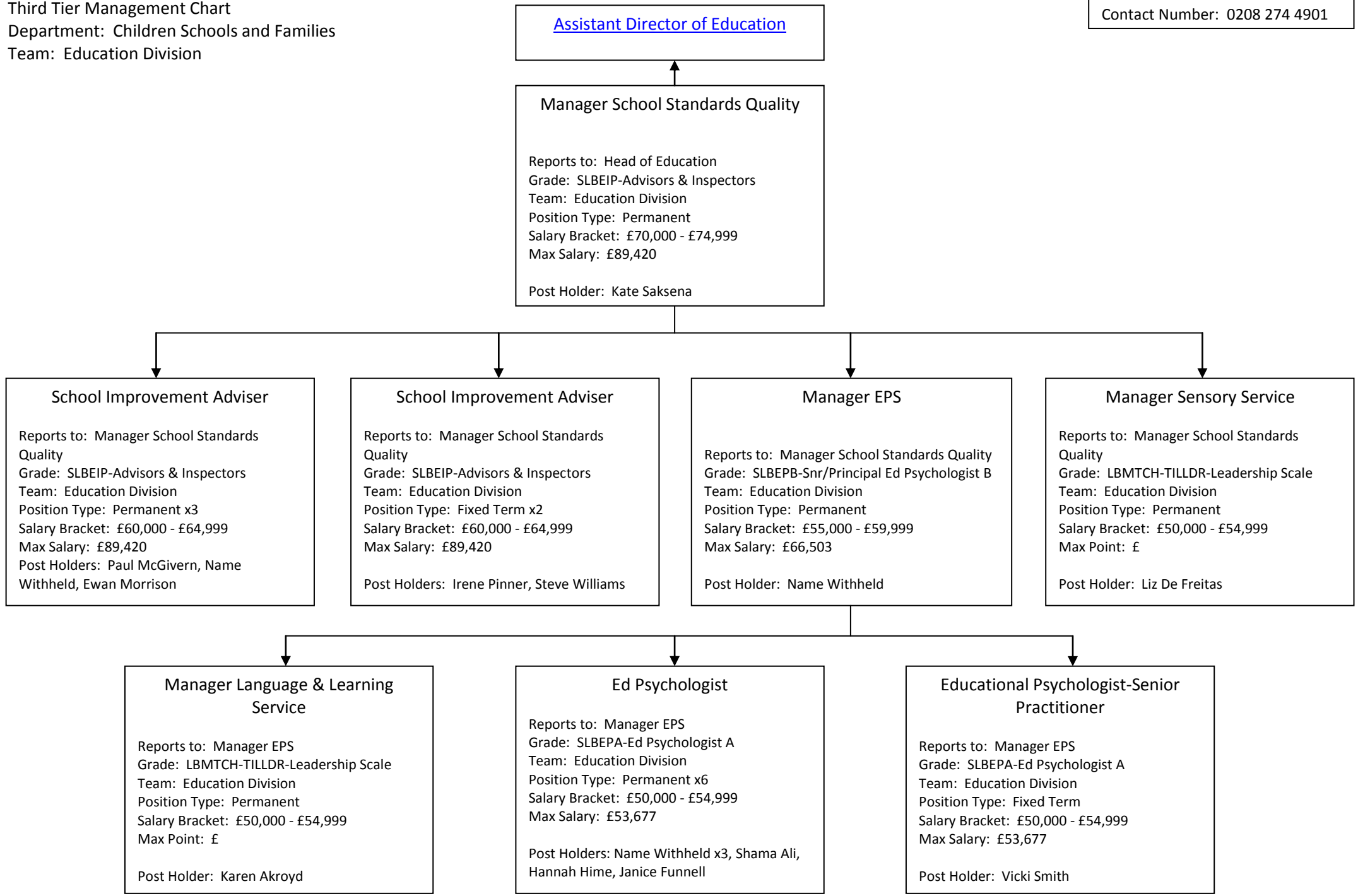
Reports to: Social Inclusion Manager  
Grade: LBMTCH-TILLDR-Leadership Scale  
Team: Education Division  
Position Type: Permanent  
Salary Bracket: £50,000 - £54,999  
Max Point: £?

Post Holder: Bev Selway

### Case Work Manager - VBS

Reports to: Social Inclusion Manager  
Grade: LBMTCH-TILLDR-Leadership Scale  
Team: Education Division  
Position Type: Temporary  
Salary Bracket: £50,000 - £54,999  
Max Point: £?

Post Holder: Mary Williams



Third Tier Management Chart  
Department: Children Schools and Families  
Team: Education Division

Contact Number: 0208 274 4901

