



PEDESTRIAN and CYCLE ZONE

 Mon - Fri
 8.00 - 9.15am
 2.00 - 3.15pm

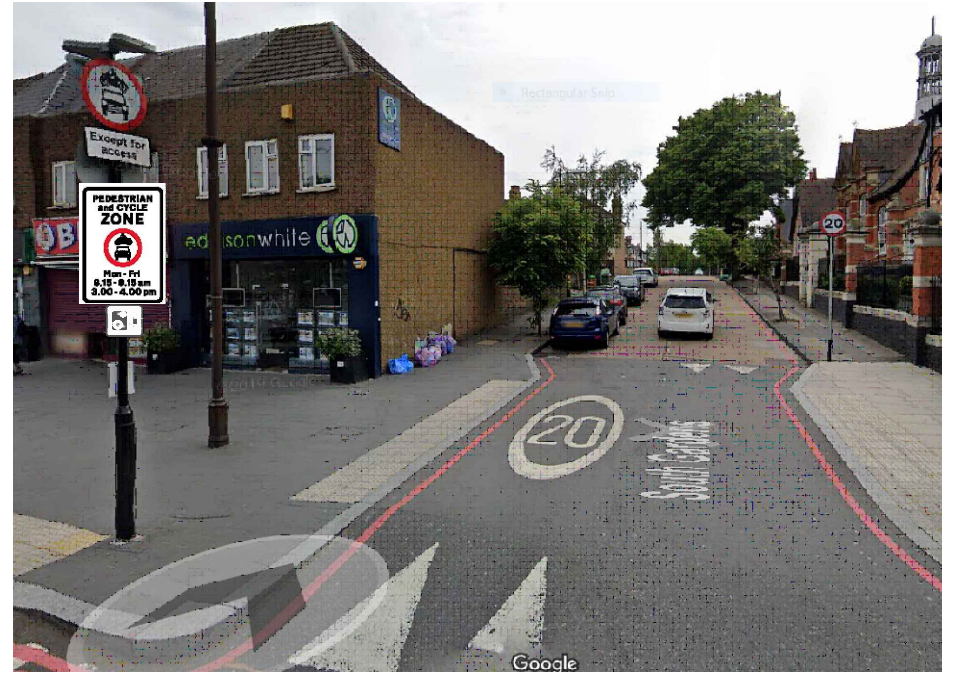

Pedestrian and cycle Zone ENDS

PEDESTRIAN and CYCLE ZONE

 Mon - Fri
 8.00 - 9.15am
 2.00 - 3.15pm


Pedestrian and cycle Zone ENDS

No Motorised Access Into South Gardens
 Mon - Fri
 8.00 - 9.15am
 2.00 - 3.15pm



Notes
 Do not scale from this drawing

Rev.	Revisions	Drawn	Sig.	Date	Chkd.	Sig.	Date	App.	Sig.	Date

 **Street Scene & Waste**
 environment & regeneration

TRAFFIC & HIGHWAYS

Reproduced from/based upon the Ordnance Survey 1:2500 maps with the permission of the Controller of HMSO. Crown Copyright Reserved. Unauthorised reproduction infringes Crown copyright and may lead to prosecution or civil proceedings. London Borough of Merton 10019259 2015

Drawn by	Sig.	Date
PM		NDV 2020
Checked by	Sig.	Date
Approved by	Sig.	Date

PROJECT
SCHOOL SAFETY ZONES
SINGLEGATE PRI. SCH

TITLE
EXPERIMENTAL TRAFFIC
MANAGEMENT ORDER

 **merton**

Merton Civic Centre
 London Road
 Morden, Surrey
 SM4 5DX
 www.merton.gov.uk

Drawing No.	Z80-77-001
Revision	A
Classification	FOR DISCUSSION
Scale	N.T.S