



Traffic & Highway Services  
London Borough of Merton  
Merton Civic Centre  
London Road  
Morden SM4 5DX

*Direct Line:* 020 8545 3054  
*Fax:*  
*Our Ref:* LTN-Commonside East  
*Date:* 27 August 2020

## COVID-19 LOW TRAFFIC NEIGHBOURHOODS (LTN) COMMONSIDE EAST NEAR ITS JUNCTION WITH SPENCER ROAD EXPERIMENTAL ROAD CLOSURE

### Proposed Road Closure

As part of Merton's response in maintaining social distancing, removing rat running and to encourage safe walking and cycling, we will be introducing a temporary road closure on Commonside East near its junction with Spencer Road. The proposal will include free standing planters, lockable removeable bollards for use only by the emergency services and authorised vehicles.

### Consultation process

The proposed measure is being introduced under an Experimental Traffic Management Order:

- This allows the Council to implement the restrictions during the consultation period.
- It allows the Council to assess and monitor the restrictions and its impact.
- It will enable the residents and other road users to experience the restrictions, thereby allowing them to make informed comments.

The restrictions and the Order will be in place for a maximum of **18 months**. Anyone can object and make representations within the first six months (the statutory/formal consultation period) of the experimental Order coming into force and the implementation of the works. Consultees (mainly residents) are encouraged to make their comments at least 3 months after implementation. Consultees will have 6 months to respond to the consultation. All representations will be considered prior to making a final decision which could include its removal, making any necessary modifications or making it permanent.

Street notices will also be erected within the vicinity of the proposals to inform residents and road users of the start of the restrictions and the statutory consultation.

All available information including updates will be posted on the website. All representations must be made on line using the following link. Please note that you may not be able to submit any comments until end of September 2020. <https://www.merton.gov.uk/covid-19-transport-projects>

A response **will not** be made until the consultation is concluded and a final decision is made. The Council will monitor the situation and will make the appropriate adjustments if and when necessary.

### Date and Time of Works

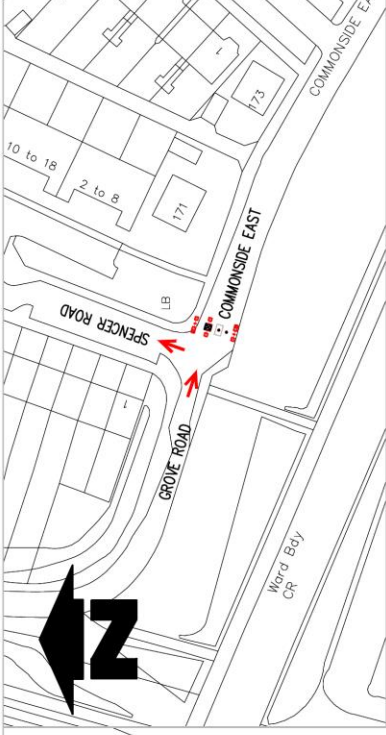
Implementation of the proposal may be as soon as **7 September 2020**, weather permitting. See the general layout plan overleaf.

### Further Information and Contact Details for the Works

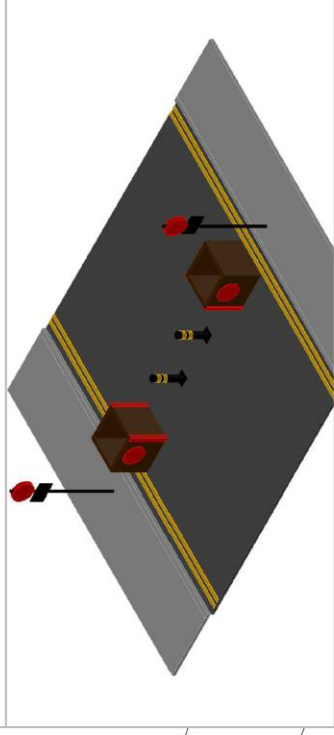
The people looking after these works are:

James Geeson Merton Council Engineer: 02085453054  
Gus Smith FM Conway Ltd, Contract Manager 07748632920 / 02086368822

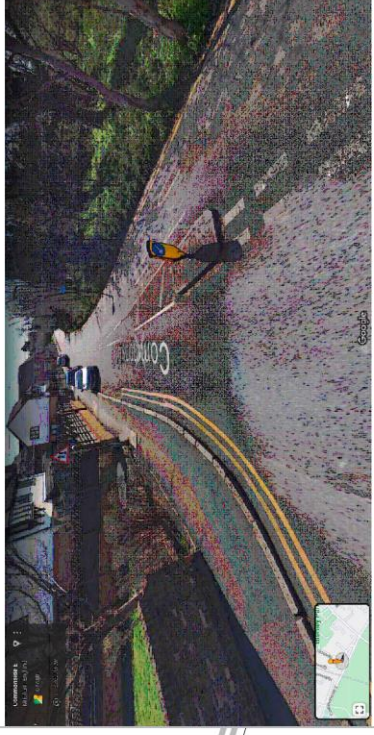
FM Conway will erect information boards on site and their staff will be able to update you on the progress as the works proceed. Please adhere to the social distancing rules.



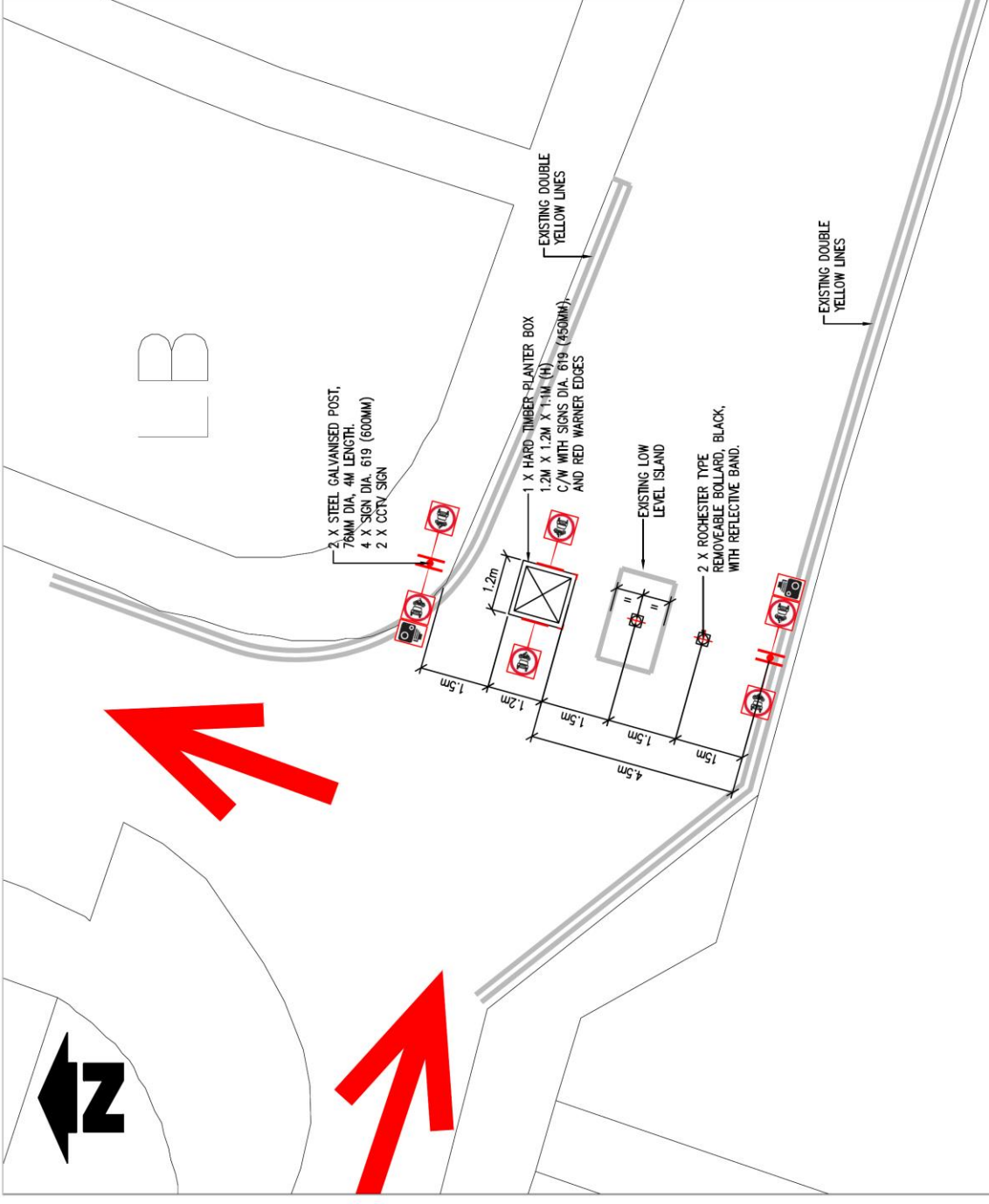
OVERVIEW  
(SCALE 1:1000)



3D CONCEPT



GOOGLE MAPS STREET VIEW



LOW TRAFFIC NEIGHBOURHOOD – COMMONSIDE EAST AREA  
(REFER TO BOROUGH WIDE OVERVIEW DRG NO. 7400-02-03)  
ROAD CLOSURE – GENERAL ARRANGEMENT  
(SCALE 1:100)

Notes  
Do not scale from this drawing

Drawn By	Checked By	Scale	Date

FUTURE MERTON

Drawn By	Checked By	Scale	Date

Merton Civic Centre  
 London Road  
 Merton, Surrey  
 SM4 6DX  
 www.merton.gov.uk

PROJECT: COVID-19 TEMP SAFETY MEASURES  
 TITLE: TN - TEMP ROAD CLOSURE COMMONSIDE EAST  
 Drawing No: Z400-02-02-03  
 Revision: -  
 Date: -  
 Scale: 1:100, 1:500  
 Status: DRAFT