

# APPENDICES

*(Set of Merton Maps to help contextualise CASA (/CAF) data provided in reports on this page)*

**Appendix 1: 2009 Population Projection of CYP 0-19 by Ward**

**Appendix 2: 2010 Income Deprivation Affecting Children Index by Ward/Super Output Areas**

**Appendix 3: Location of Primary, Secondary, Special Schools and FE provision**

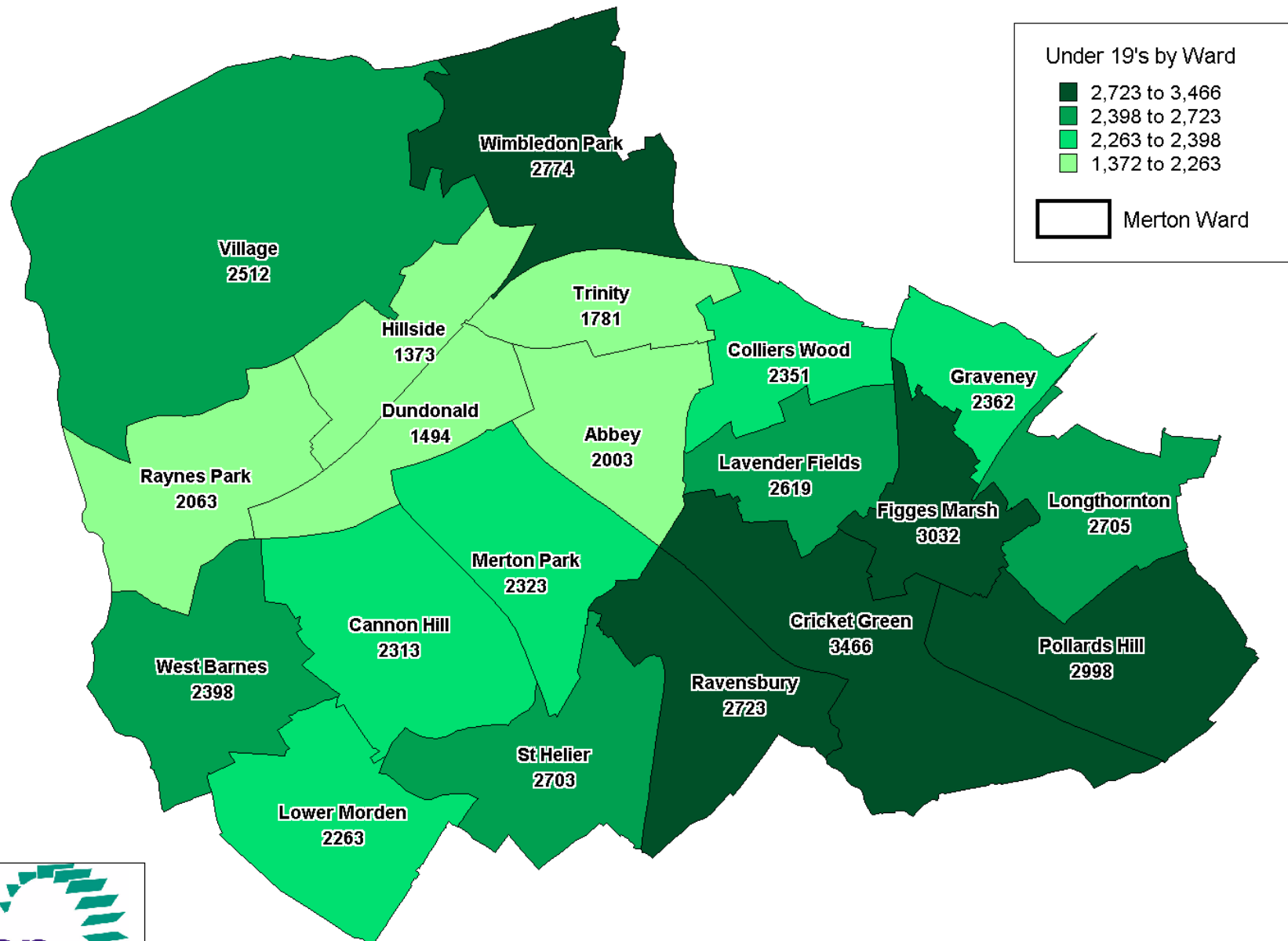
**Appendix 4: Location of Children's Centres in Merton**

**Appendix 5: Location of Health Centres in Merton**

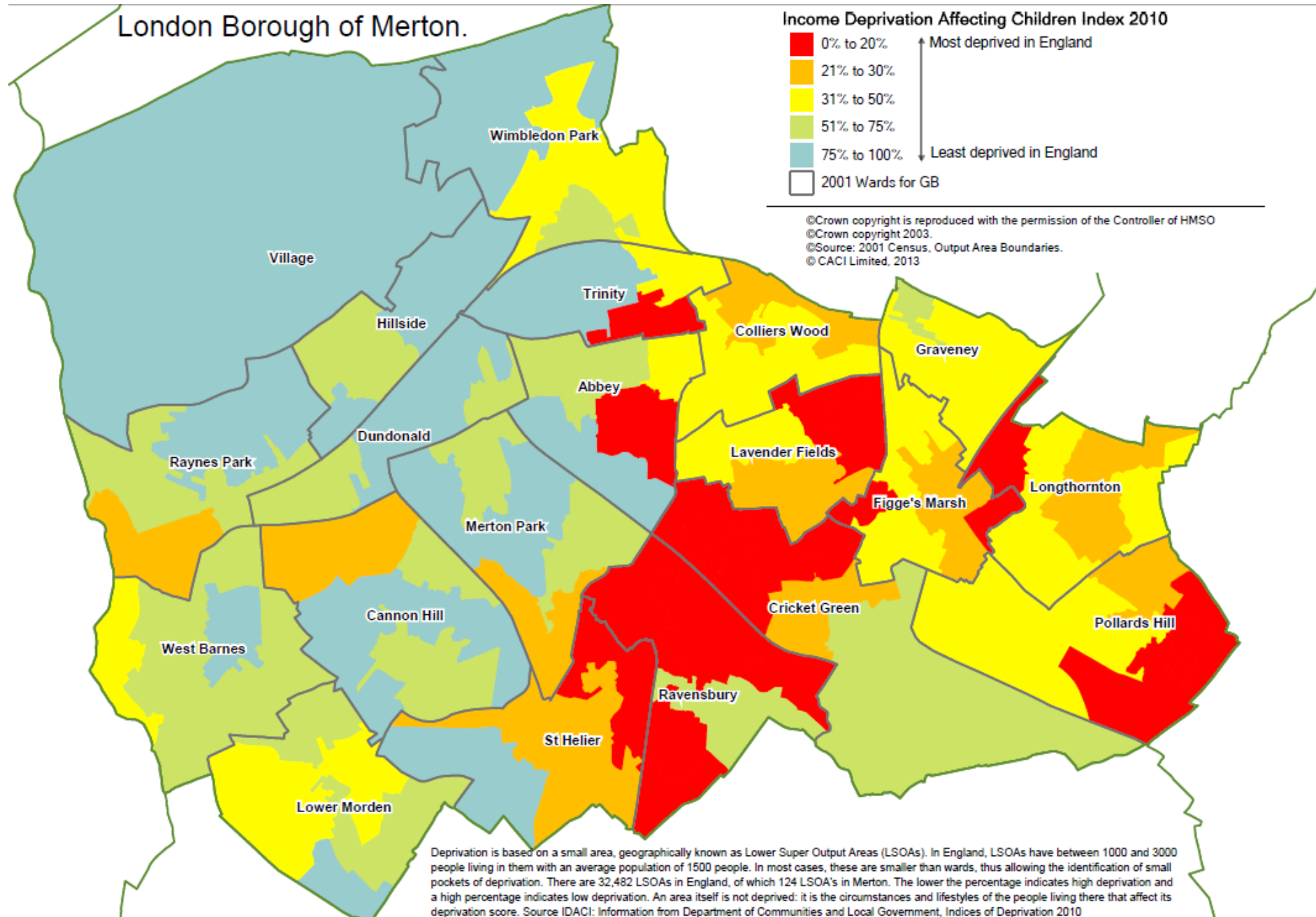
**Appendix 6: (This is a composite of Appendices 2-5: best to print this separately on A3)**

# Appendix 1: 2009 Population Projection of CYP 0-19 by Ward

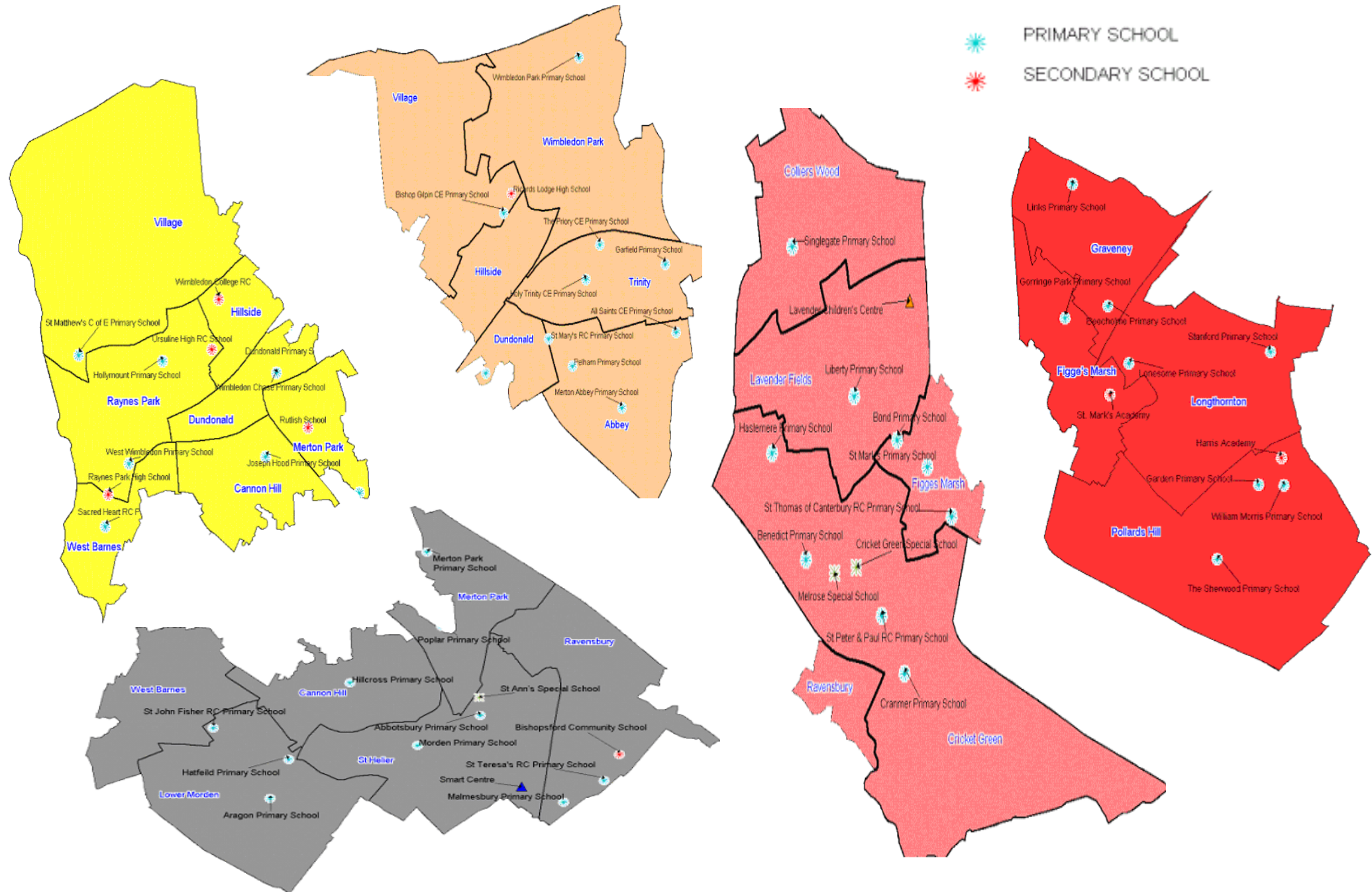
2009 Population projection of children and young people (0-19) by ward in Merton.



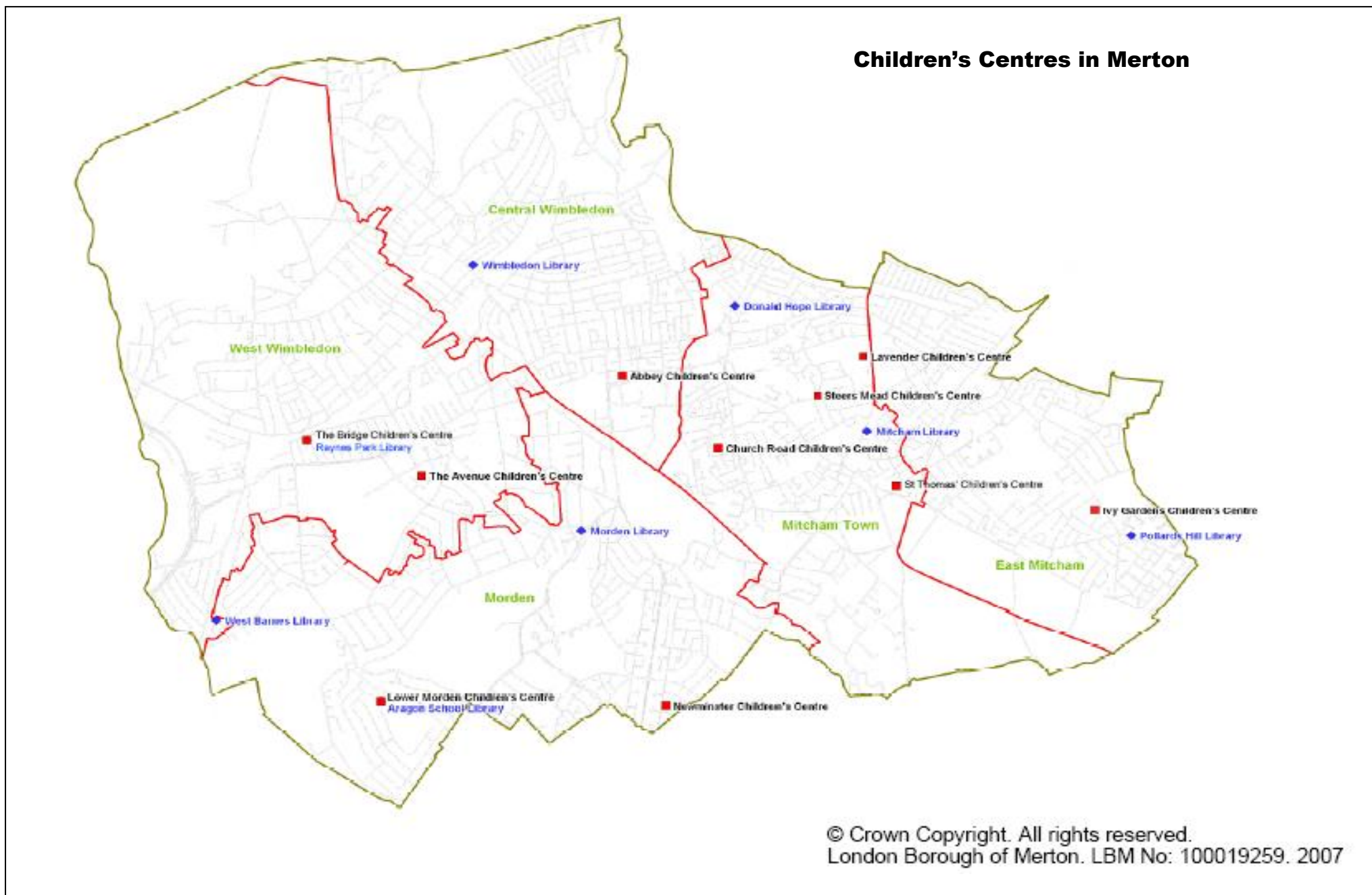
# Appendix 2: Income Deprivation Affecting Children Index 2010 (IDACI) by Ward and Super Output Areas



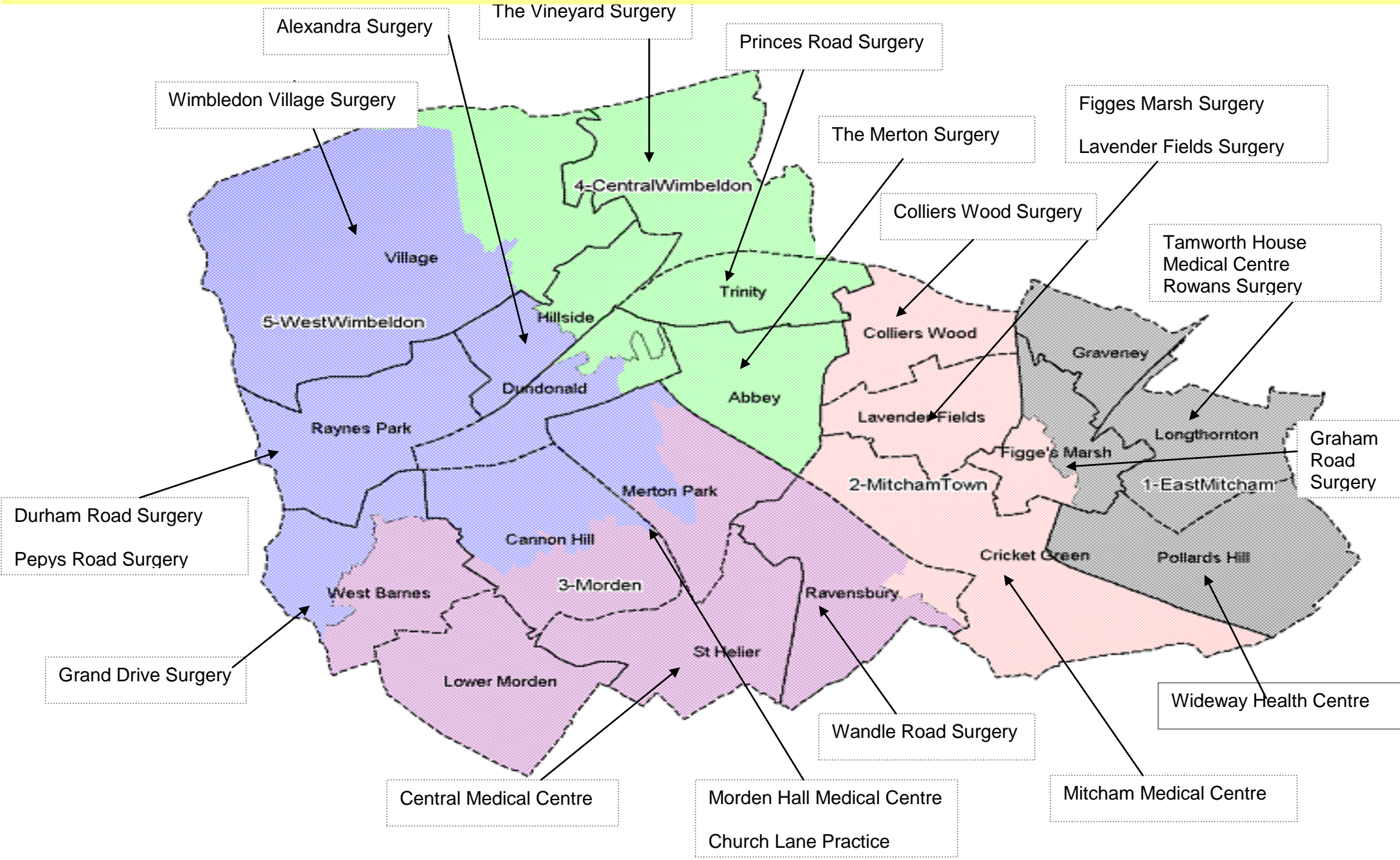
# Appendix 3: Location of Primary and Secondary Schools in Merton



## Appendix 4: Location of Children's Centres in Merton



# Appendix 5: Location of Health Centres in Merton

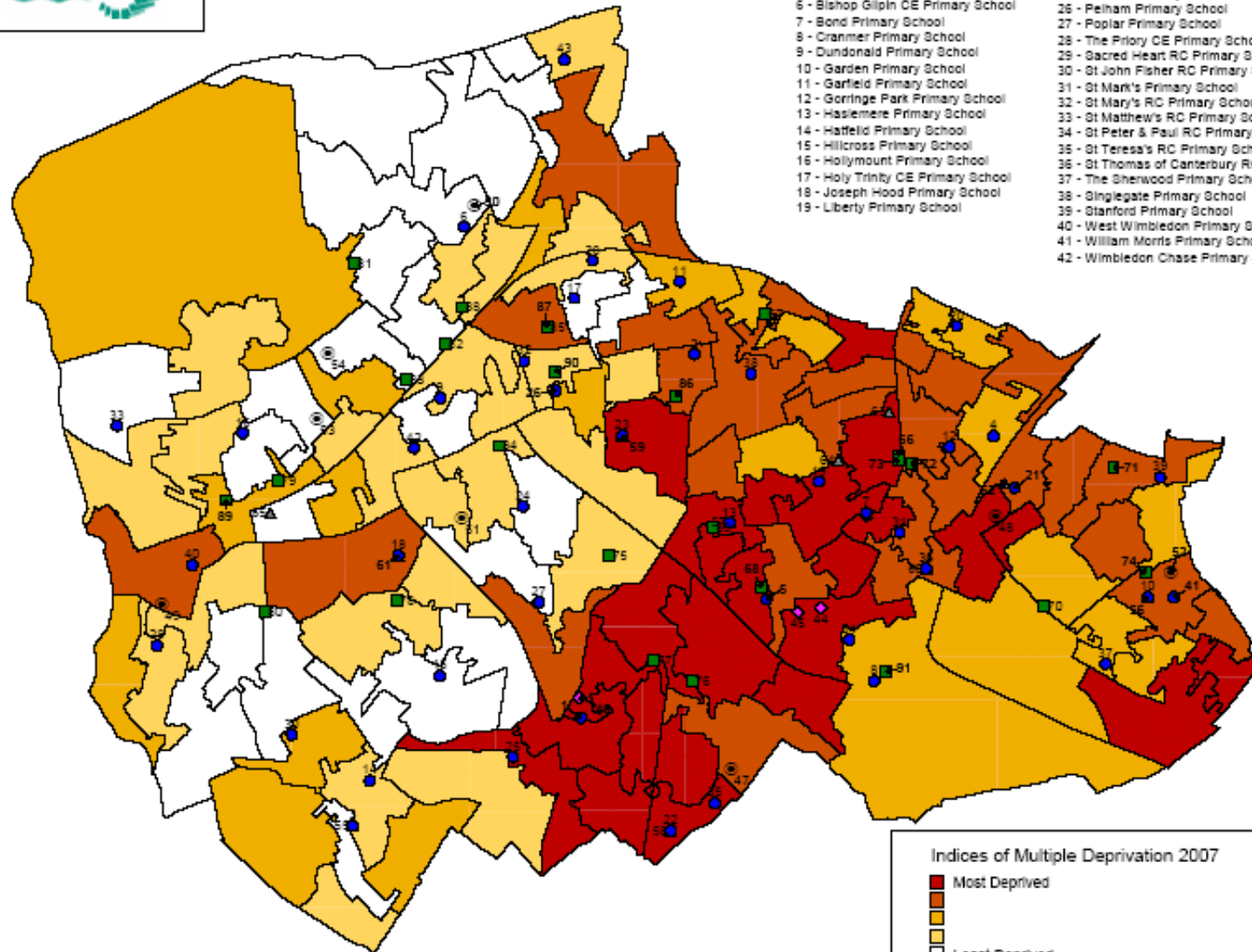


# Appendix 6: Composite of Appendices 2 – 5 above (IMD 2007, Schools, Surgeries and Children Centres)

(if printing, best to print this page in A3 format)



## LONDON BOROUGH OF MERTON



### PRIMARY SCHOOL

- 1 - Abbotsbury Primary School
- 2 - All Saints CE Primary School
- 3 - Aragon Primary School
- 4 - Beechome Primary School
- 5 - Benedict Primary School
- 6 - Bishop Gilpin CE Primary School
- 7 - Bond Primary School
- 8 - Cranmer Primary School
- 9 - Dundonald Primary School
- 10 - Garden Primary School
- 11 - Garfield Primary School
- 12 - Gorringe Park Primary School
- 13 - Haslemere Primary School
- 14 - Hatfield Primary School
- 15 - Hillcross Primary School
- 16 - Holymount Primary School
- 17 - Holy Trinity CE Primary School
- 18 - Joseph Hood Primary School
- 19 - Liberty Primary School

### 20 - Links Primary School

- 21 - Lonesome Primary School
- 22 - Malmesbury Primary School
- 23 - Merton Abbey Primary School
- 24 - Merton Park Primary School
- 25 - Morden Primary School
- 26 - Peilham Primary School
- 27 - Poplar Primary School
- 28 - The Priory CE Primary School
- 29 - Sacred Heart RC Primary School
- 30 - St John Fisher RC Primary School
- 31 - St Mark's Primary School
- 32 - St Mary's RC Primary School
- 33 - St Matthew's RC Primary School
- 34 - St Peter & Paul RC Primary School
- 35 - St Teresa's RC Primary School
- 36 - St Thomas of Canterbury RC
- 37 - The Sherwood Primary School
- 38 - Singlegate Primary School
- 39 - Stanford Primary School
- 40 - West Wimbledon Primary School
- 41 - William Morris Primary School
- 42 - Wimbledon Chase Primary School

### 43 - Wimbledon Park Primary School

### SPECIAL SCHOOLS

- 44 - Cricket Green Special School
- 45 - Melrose Special School
- 46 - St Ann's Special School

### SECONDARY SCHOOLS

- 47 - Bishopford Community School
- 48 - St Mark's CE Academy
- 49 - Raynes Park High School
- 50 - Ricards Lodge High School
- 51 - Rutlish School
- 52 - Harris Academy Merton
- 53 - Ursuline High RC School
- 54 - Wimbledon College RC

### CHILDRENS CENTRE

- 55 - Lower Morden Children's Centre
- 56 - Ivy Gardens Children's Centre
- 57 - Church Road Children's Centre
- 58 - Neaminstor Children's Centre
- 59 - Abbey Children's Centre
- 60 - The Children's Centre at St Thomas of Canterbury Primary School
- 61 - The Avenue Children's Centre
- 62 - Intergenerational Centre
- 63 - Lavender (London Road) Children's Centre
- 64 - Lavender (Steers Mead) Children's Centre
- 65 - The Bridge Children's Centre

### GPs- HCs

- 66 - Lavender Fields Surgery
- 67 - Colliers Wood Surgery
- 68 - Cricket Green Medical Practice
- 69 - Mitcham Medical Centre
- 70 - Tamworth House Medical Centre
- 71 - Rowans Surgery
- 72 - Graham Road Surgery
- 73 - Figges Marsh Surgery
- 74 - Wideway Health Centre
- 75 - Morden Hall Medical Centre
- 76 - Wandie Road Surgery
- 77 - Central Medical Centre
- 78 - Cannon Hill Lane Medical Practice
- 79 - Pepys Road Practice
- 80 - Grand Drive Surgery
- 81 - Wimbledon Village Practice
- 82 - Francis Grove Surgery
- 83 - Riverhouse Surgery
- 84 - Church Lane Practice
- 85 - Princes Road Surgery
- 86 - The Merton Surgery
- 87 - The Vineyard Hill Road Surgery
- 88 - Alexandra Surgery
- 89 - Durham Road Surgery
- 90 - Patrick Doody Clinic
- 91 - The Wilson

### Indices of Multiple Deprivation 2007

- Most Deprived
- 
- 
- Least Deprived

- GPs HCs
- Primary Schools
- Secondary Schools
- Special Schools
- Childrens Centres