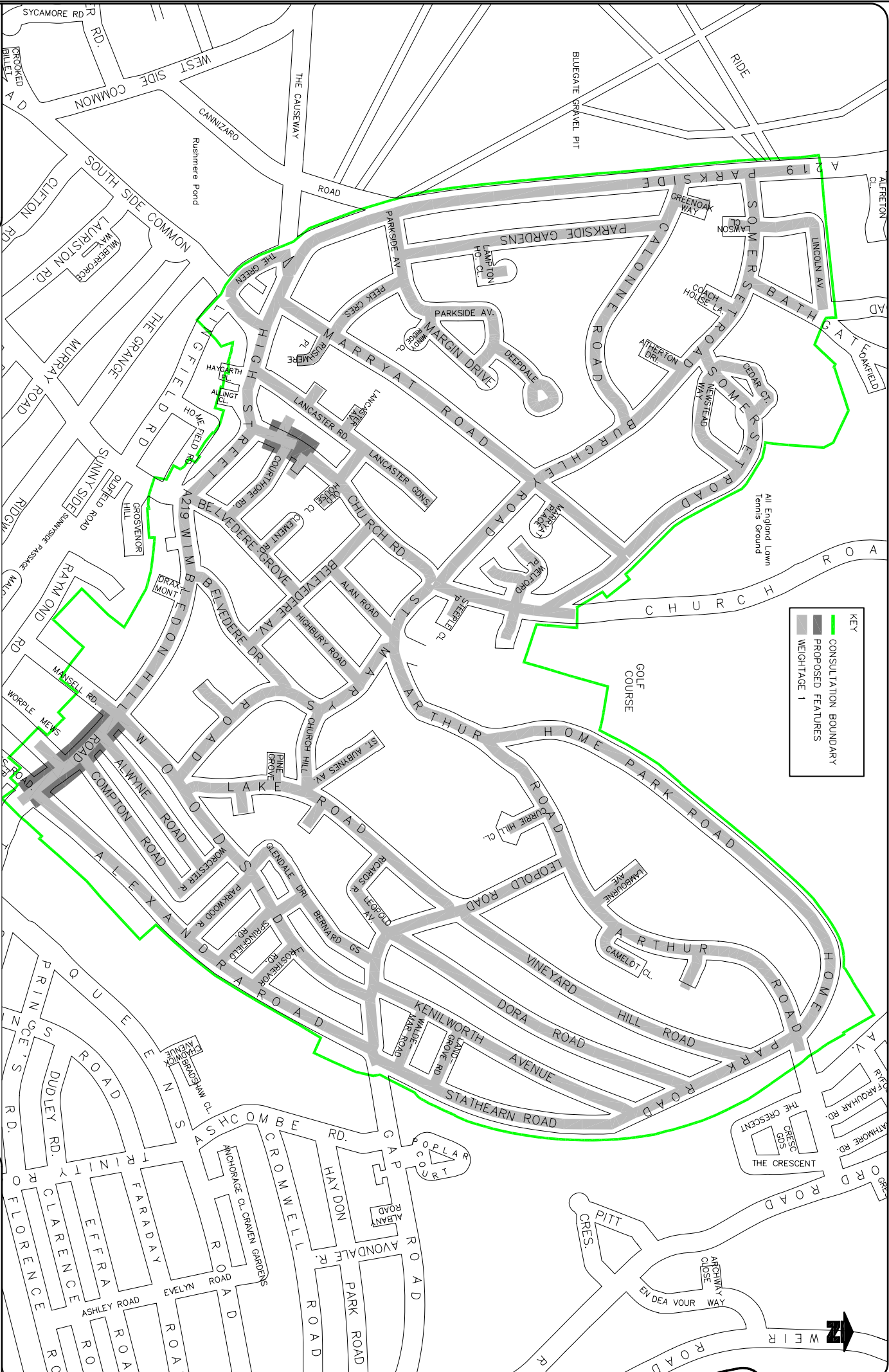


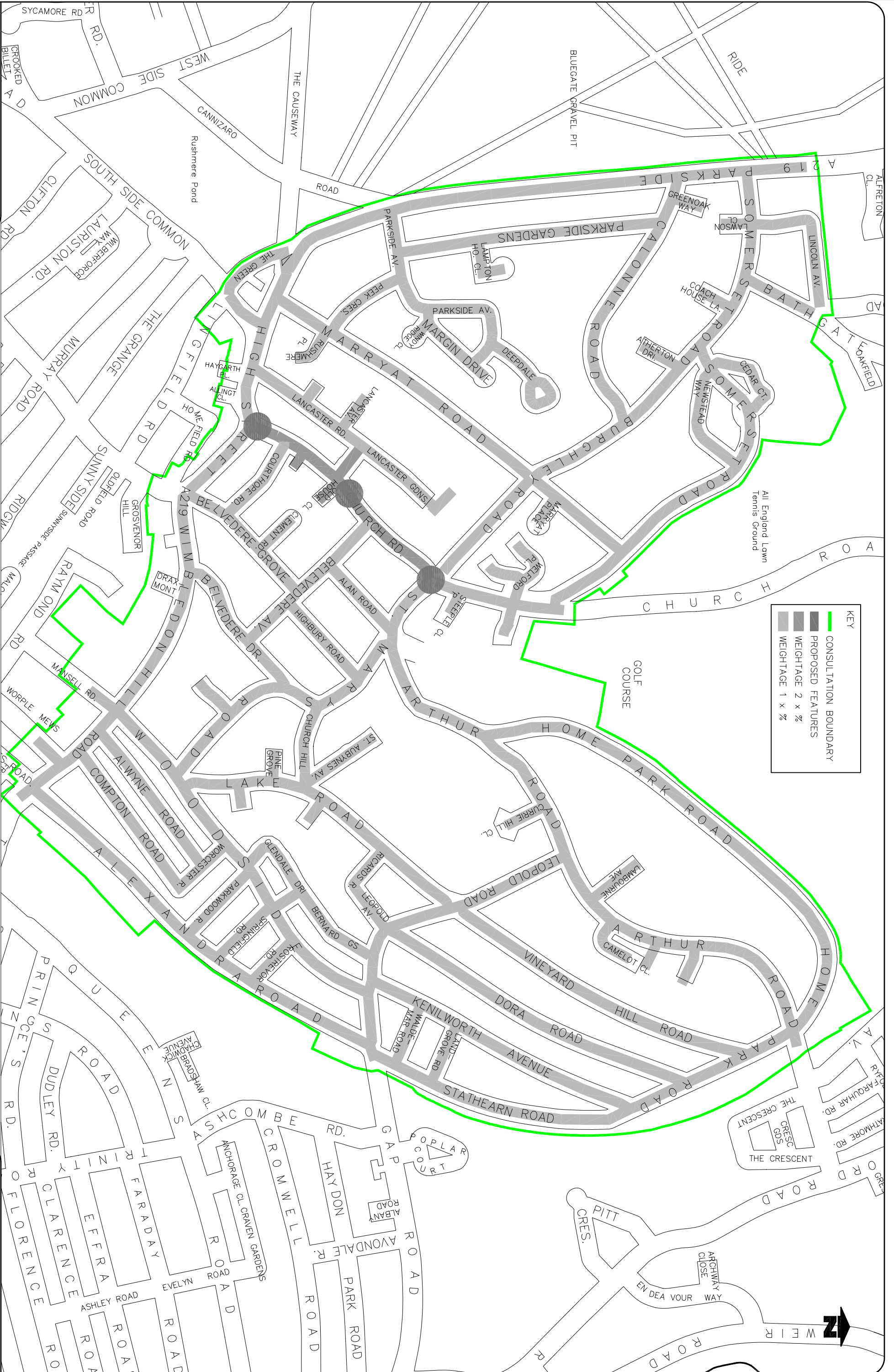
Reproduced from/based upon the Ordnance Survey's 1:1250 maps with the permission of the Controller of Her Majesty's Stationery Office. Copyright Reserved. Unauthorised reproduction of this document is prohibited. © and may London Borough of Merton 100019259 2009

WATS CONSULTATION QUESTIONNAIRE ANALYSIS WEIGHTING
QUESTION 1 : PEAK TIME PARKING RESTRICTIONS
QUESTION 12 : WIMBLEDON HILL RD PROPOSALS
QUESTION 14 : 20MPH SPEED LIMIT



KEY	
	CONSULTATION BOUNDARY
	PROPOSED FEATURES WEIGHTAGE 1

Reproduced from/based upon the Ordnance Survey's 1:1250 maps with the permission of the Controller of H.M.S.O., Crown Copyright Reserved. Unauthorised reproduction infringes Crown copyright and may lead to prosecution or civil proceedings. London Borough of Merton 1000191259 2009

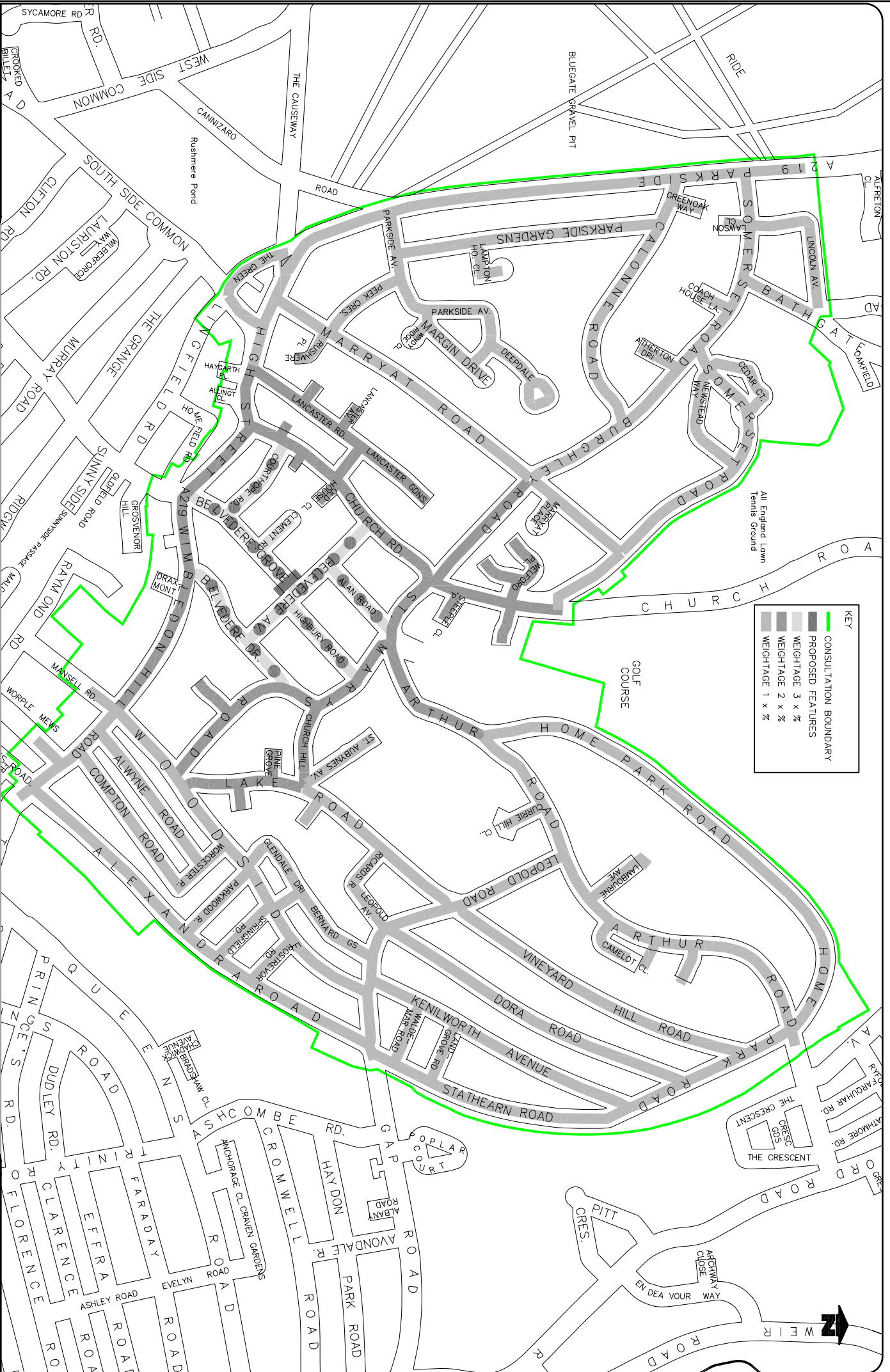


WATS CONSULTATION QUESTIONNAIRE ANALYSIS WEIGHTING
QUESTION 2 : CHURCH ROAD TRAFFIC CALMING



Reproduced from/based upon the Ordnance Survey's 1:1250 maps with the permission of the Controller of H.M.S.O., Crown Copyright Reserved. Unauthorised reproduction infringes Crown Copyright and may be liable to prosecution under the Copyright Act 1988.
 London Borough of Merton 100019259 2009

WATS CONSULTATION QUESTIONNAIRE ANALYSIS WEIGHTING
 QUESTION 3 : EXPERIMENTAL SPEED CUSHIONS - BELVEDERE AREA
 QUESTION 4 : EXPERIMENTAL WIDTH RESTRICTION - BELVEDERE GROVE

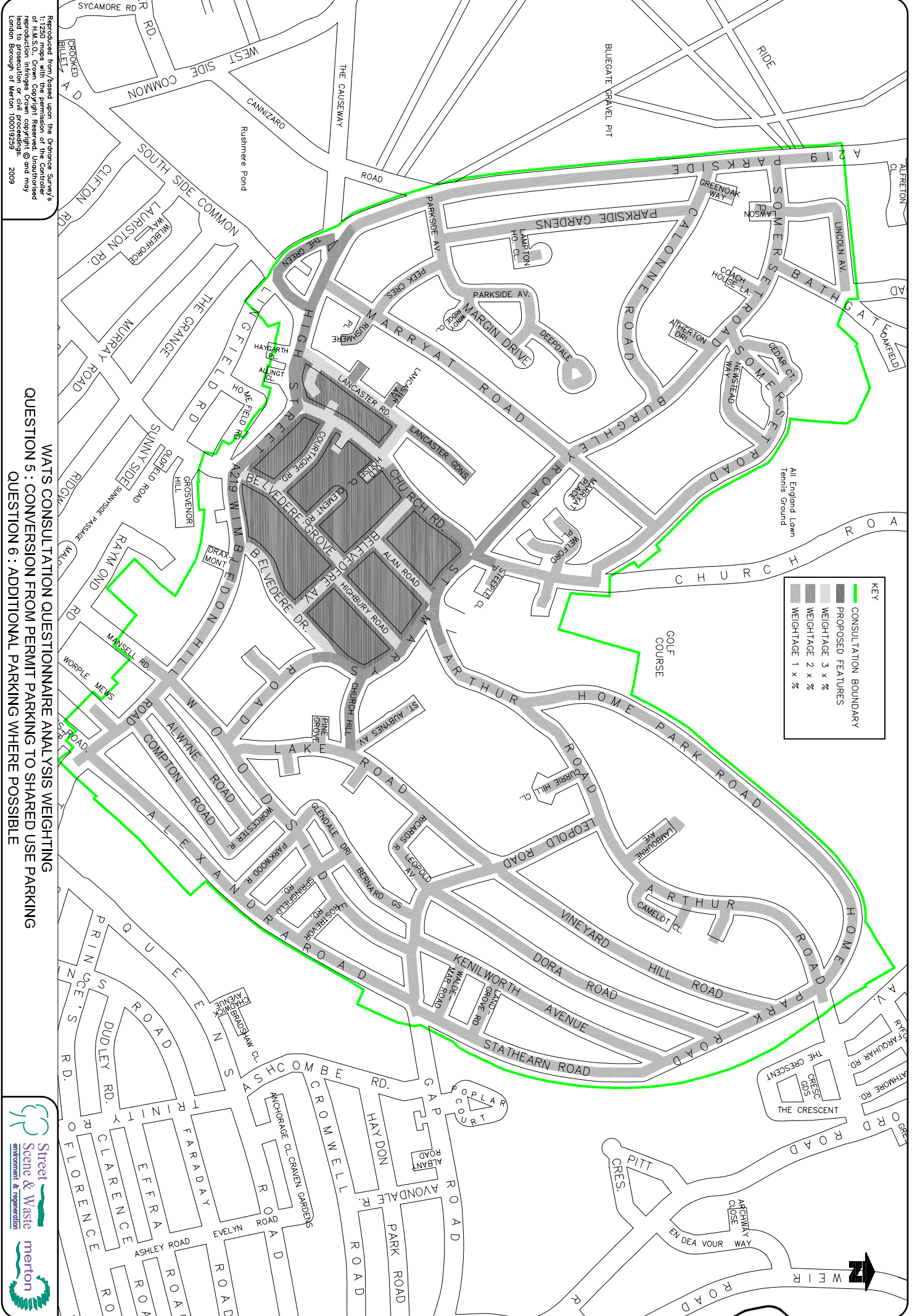


KEY	
	CONSULTATION BOUNDARY
	PROPOSED FEATURES
	WEIGHTAGE 3 x %
	WEIGHTAGE 2 x %
	WEIGHTAGE 1 x %

Street Scene & Waste environment & regeneration merton

WIMBLETON AREA TRAFFIC STUDY





KEY	
	CONSULTATION BOUNDARY
	PROPOSED FEATURES
	WEIGHTAGE 3 x %
	WEIGHTAGE 2 x %
	WEIGHTAGE 1 x %

Reproduced from/based upon the Ordnance Survey's 1:12500 maps with the permission of the Controller of Her Majesty's Stationery Office. Crown Copyright Reserved. All Rights Reserved. © 2009. This document is for information only and does not lead to prosecution or civil proceedings. London Borough of Merton 100019259 2009

WATS CONSULTATION QUESTIONNAIRE ANALYSIS WEIGHTING
 QUESTION 5 : CONVERSION FROM PERMIT PARKING TO SHARED USE PARKING
 QUESTION 6 : ADDITIONAL PARKING WHERE POSSIBLE

Street Scene & Waste Environment & Transport
 merton



Reproduced from/based upon the Ordnance Survey's 1:1250 maps with the permission of the Controller of Her Majesty's Stationery Office. Crown Copyright Reserved. Unauthorised reproduction infringes Crown Copyright and may be prosecuted. © Crown Copyright and the Controller of Her Majesty's Stationery Office 2009. London Borough of Merton 100019229

WATS CONSULTATION QUESTIONNAIRE ANALYSIS WEIGHTING
QUESTION 7 - ENTRY TREATMENT



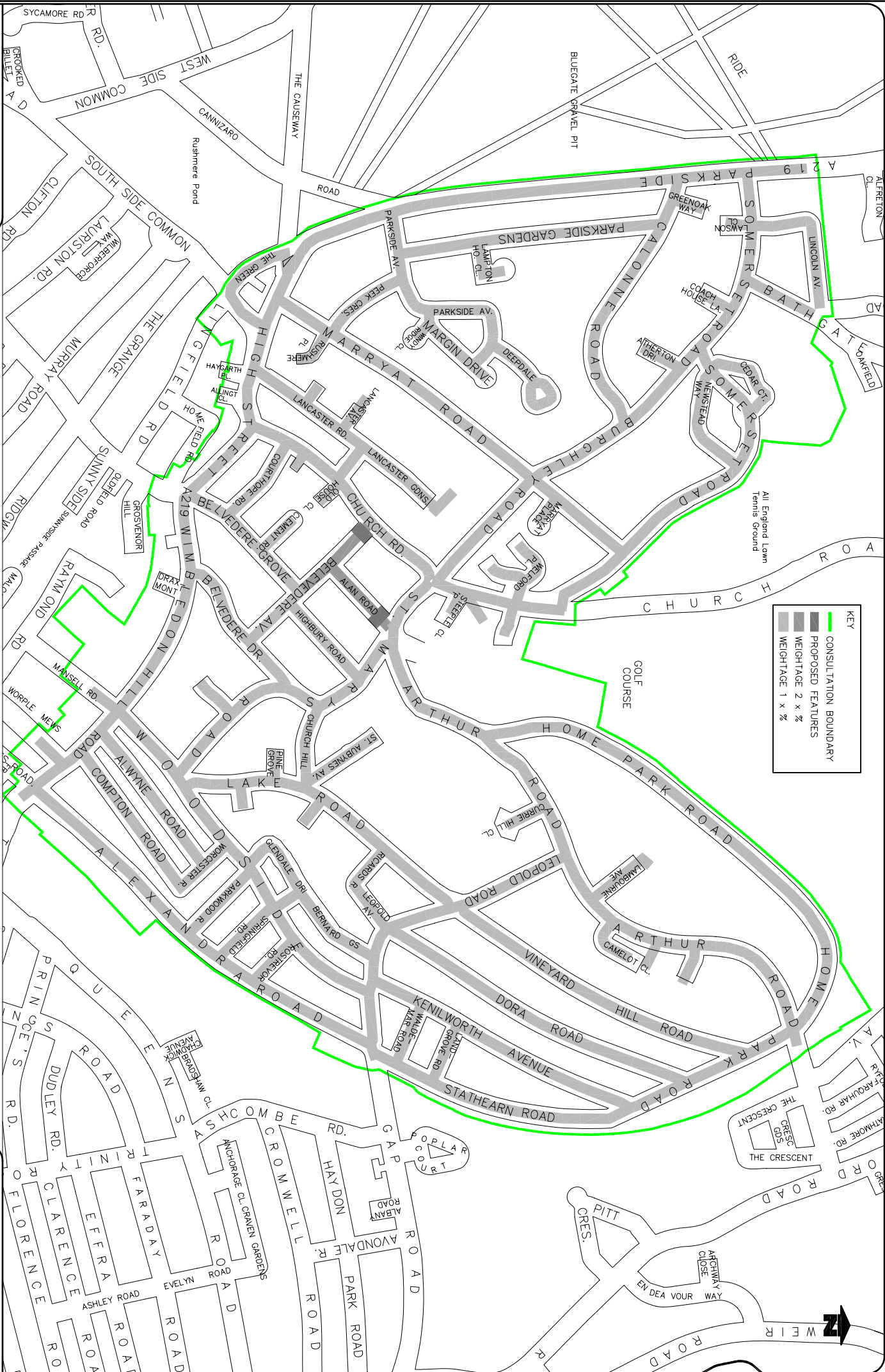
KEY

- CONSULTATION BOUNDARY
- PROPOSED FEATURES WEIGHTAGE 2 x %
- WEIGHTAGE 1 x %



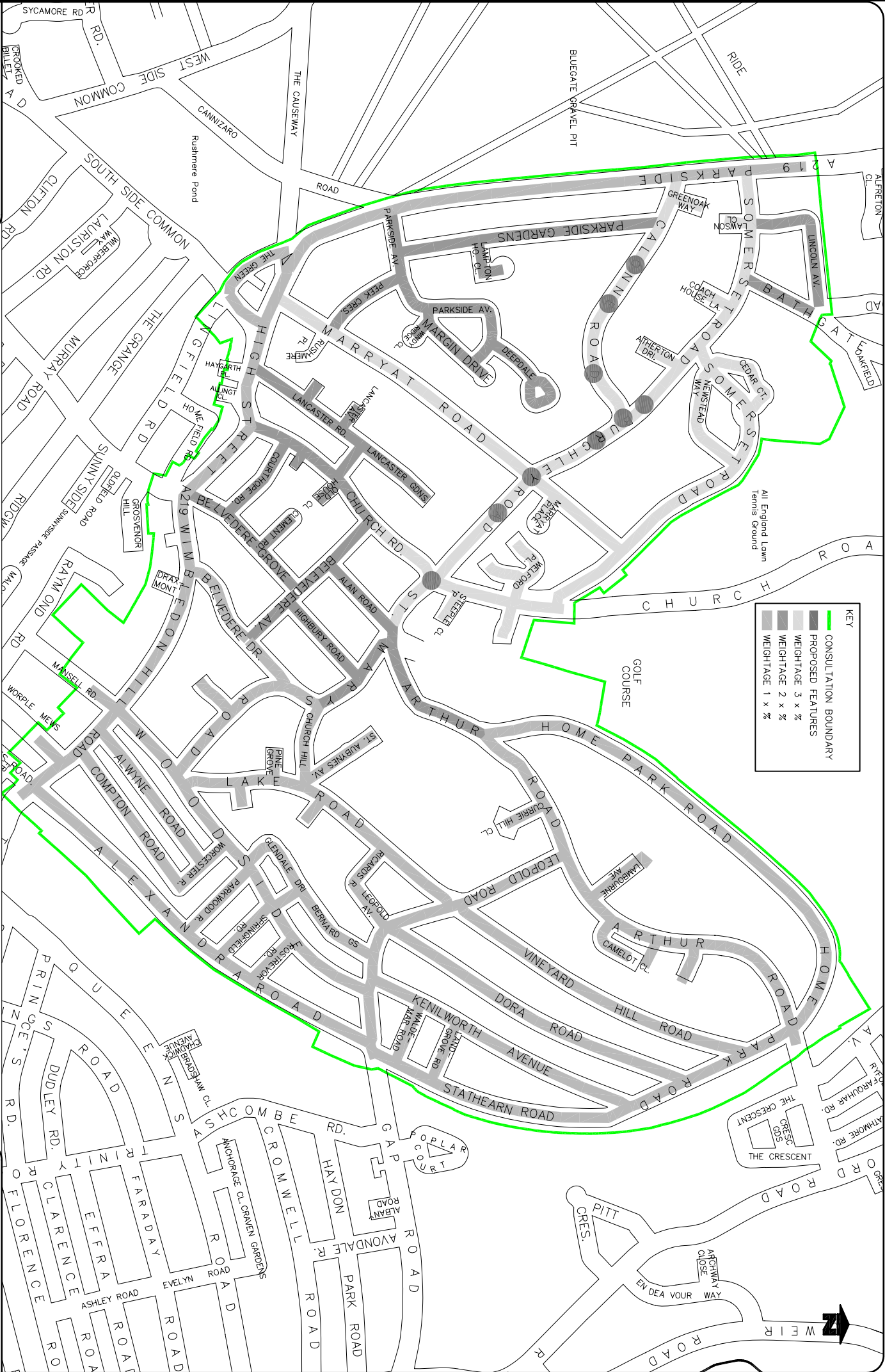
Reproduced from/based upon the Ordnance Survey's map of Great Britain, the copyright in which is vested in Her Majesty's Stationery Office. Crown Copyright. Reproduction in any form without the permission of the Controller of Her Majesty's Stationery Office is prohibited. Unauthorised reproduction infringes Crown Copyright and may lead to prosecution or civil proceedings. © and may London Borough of Merton 1000192529 2009

WATS CONSULTATION QUESTIONNAIRE ANALYSIS WEIGHTING
QUESTION 8 : ENTRY TREATMENTS



KEY	
	CONSULTATION BOUNDARY
	PROPOSED FEATURES
	WEIGHTAGE 2 x %
	WEIGHTAGE 1 x %

Reproduced from/based upon the Ordnance Survey's map of Great Britain, Crown Copyright Reserved. Unauthorised reproduction infringes Crown copyright @ and may lead to prosecution or civil proceedings. 2009

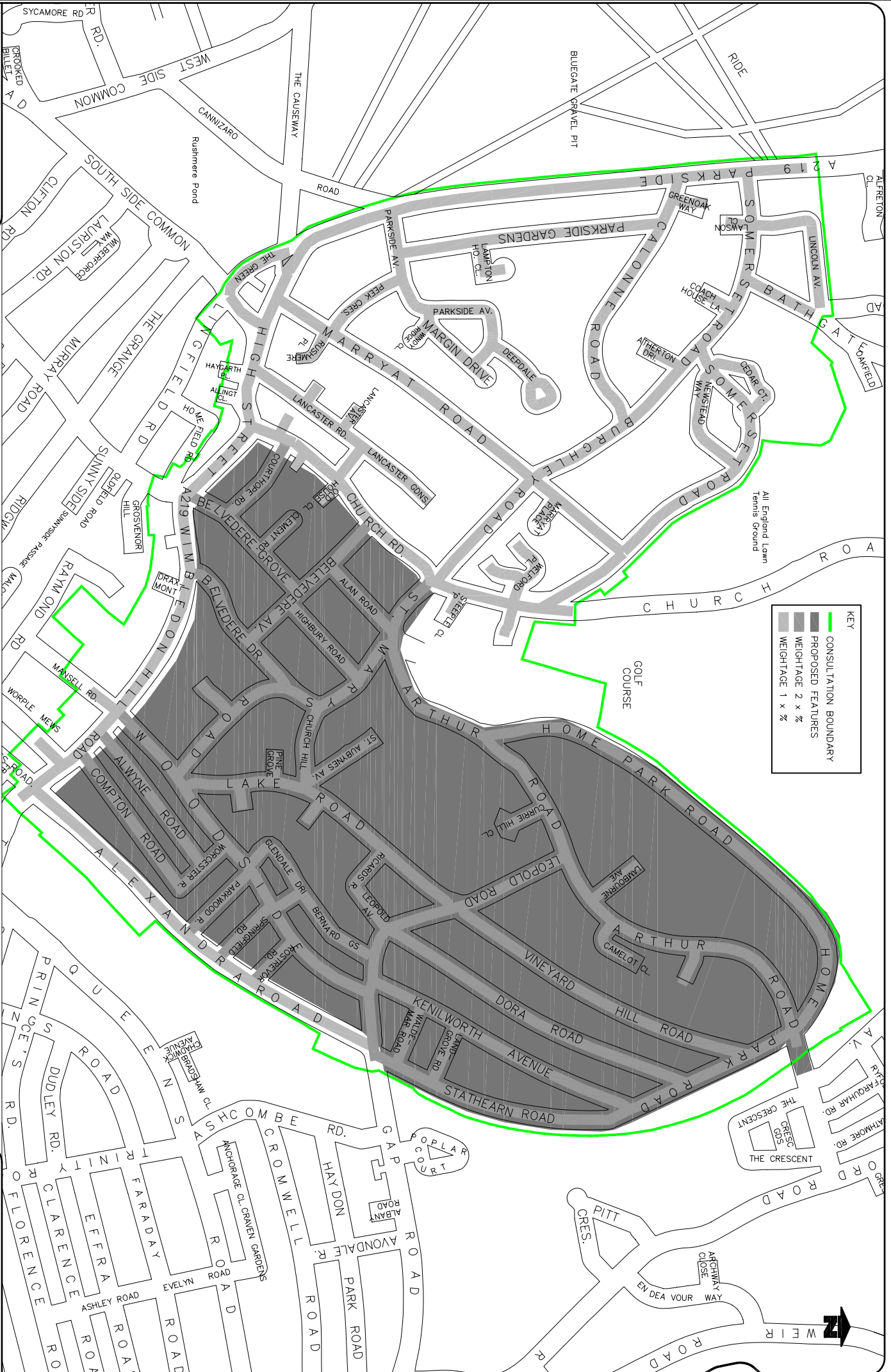


KEY	
	CONSULTATION BOUNDARY
	PROPOSED FEATURES
	WEIGHTAGE 3 x %
	WEIGHTAGE 2 x %
	WEIGHTAGE 1 x %

WATS CONSULTATION QUESTIONNAIRE ANALYSIS WEIGHTING QUESTIONS 9-11 : BURGHLEY ROAD AND CALONNE ROAD TRAFFIC CALMING

Reproduced from/based upon the Ordnance Survey's 2009 map, with the permission of the Controller of Her Majesty's Stationery Office. Any reproduction infringes Crown copyright and may lead to prosecution or civil proceedings. © and map London Borough of Merton 100019259 2009

WATS CONSULTATION QUESTIONNAIRE ANALYSIS WEIGHTING
QUESTION 13: LORRY BAN REVIEW



KEY	
	CONSULTATION BOUNDARY
	PROPOSED FEATURES
	WEIGHTAGE 1 x %
	WEIGHTAGE 2 x %
	WEIGHTAGE 3 x %