

# MERTON WARD HEALTH PROFILES:

## RAVENSBURY



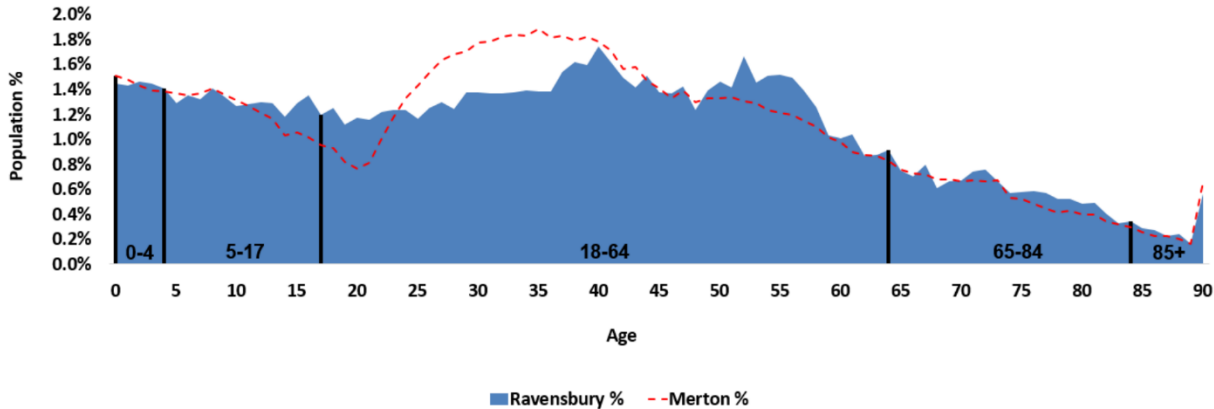
### ABOUT RAVENSBURY



### POPULATION



Population Ravensbury (all persons) by single age band, 2020



Compared to Merton, Ravensbury has a lower proportion of younger working age people (24-45 years), and a higher proportion of older working aged people (50-60 years).

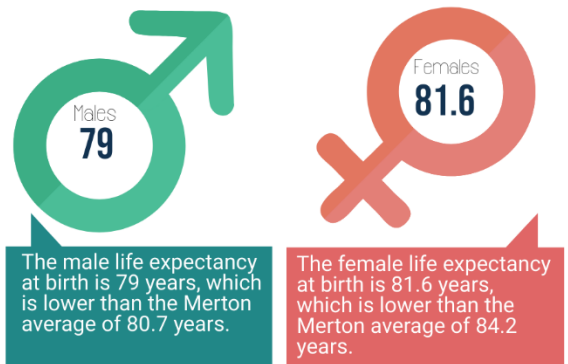
### ASSETS



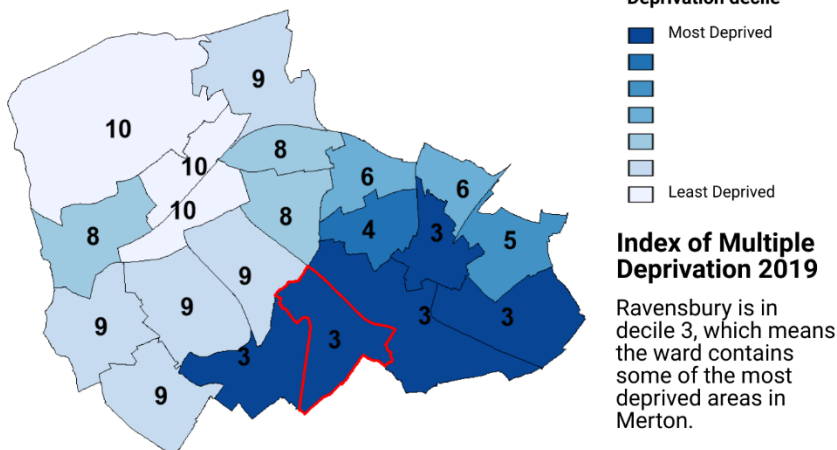
\*Access to local parks is based on travelling distance which is defined as 400 meters between household and park

\*\*The Public Transport Accessibility Level (PTAL) is a measurement created by Transport for London which gives a measure of accessibility to the public transport network. Each area is scored between 0 and 6b, where 0 indicates a very poor access to public transport and 6b indicates excellent access.

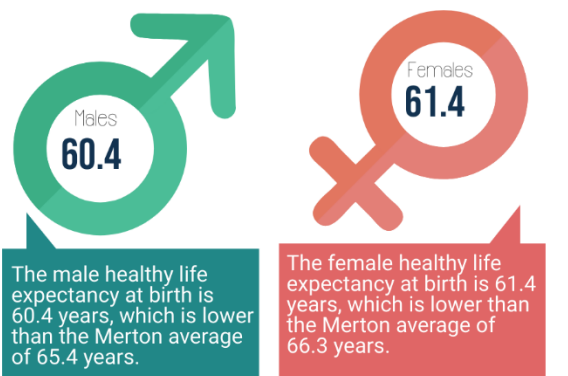
### LIFE EXPECTANCY AT BIRTH



### DEPRIVATION



### HEALTHY LIFE EXPECTANCY AT BIRTH





## CRIME RATE

**79** offences per 1,000 population

higher than Merton (68 per 1,000 population).



Highest number of offences

1. Violence against the person
2. Vehicle Offences

## CHILDREN & YOUNG PEOPLE

### School Readiness



(proportion of children achieving a good level of development at age 5)

This is lower than Merton (60%), London (62%) and England (60%) (2013/14).

### Obesity at Year 6

**25.8%**

obese in Year 6

This is higher compared to Merton (21%), and England (20%).



### Children and Young People Admissions for Injury



Ravensbury has a rate of

**98.8 PER 10,000**

Children and young people (0-14 years) admitted to hospital because of unintentional and deliberate injuries. This is higher than Merton (97), London (86) but lower than England (110), (2011/12 - 2015/16).

### Children and Older People Deprivation

**26%**

children (0-15) live in income deprived households. Higher than Merton (17%).

### Overcrowding



18% of households are overcrowded (higher than 16% in Merton).

**20%**

older people (60+) live in pension credit households. Higher than Merton (16%).



### GCSE Achievement



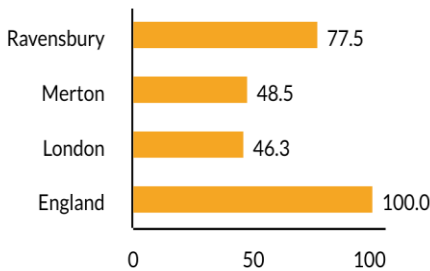
**63%** achieved 5 GCSEs\*

This is lower than Merton (68%), but higher than London (62%) and England (57%).

(\*grades A to C, including English and Maths)

## ADULTS

### Self-harm



Ravensbury has a SAR\* of 77.5 for hospital admissions for intentional self-harm. This is higher than Merton (48.5) and London (46.3) but lower than England (100).

(\*Standardised Admission Ratio)

### Smoking

Given the socio-demographic make-up of the ward, it is expected that

**20%**

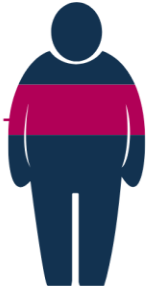
of residents in the ward have smoked in the past year. This is higher than Merton (19%).



### Obesity

**24%**

obese adults



This is higher than Merton (19%), London (21%) and comparable to England (24%).

(\*estimated proportion of over 16s with a BMI of more than 30)

### Back Pain

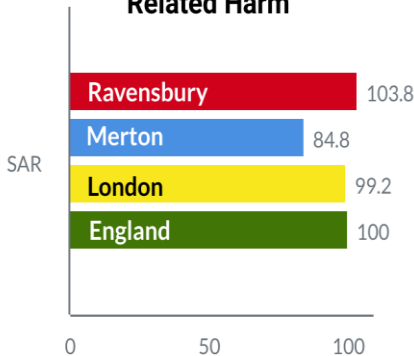


**15.2%**

of residents are estimated to have back pain. This is higher than Merton (14.6%) and London (14.5%) but lower than England (16.9%).

## POOR HEALTH & PREMATURE DEATHS

### Hospital Stay for Alcohol-Related Harm



The ward has a SAR\* of 103.8 for hospital admissions for alcohol attributable conditions. This is higher than Merton (84.8), London (99.2) and England (100).

(\*Standardised Admission Ratio)

### Main Causes of Premature Deaths\*



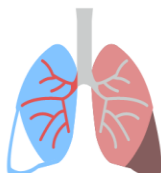
**1 IN 3**

due to cancer



**1 IN 3**

due to circulatory disease (incl. heart diseases)



**1 IN 4**

due to respiratory diseases

(\*deaths in people aged 75 and under)

### MORE INFORMATION



Merton the place for a good life



Produced in 2020



public.health@merton.gov.uk  
www.merton.gov.uk/health-social-care/publichealth/jsna.htm